

SC-300^{Q&As}

Microsoft Identity and Access Administrator

Pass Microsoft SC-300 Exam with 100% Guarantee

Free Download Real Questions & Answers **PDF** and **VCE** file from:

<https://www.certbus.com/sc-300.html>

100% Passing Guarantee
100% Money Back Assurance

Following Questions and Answers are all new published by Microsoft
Official Exam Center

- ⚙️ **Instant Download** After Purchase
- ⚙️ **100% Money Back** Guarantee
- ⚙️ **365 Days** Free Update
- ⚙️ **800,000+** Satisfied Customers



QUESTION 1

Note: This question is part of a series of questions that present the same scenario. Each question in the series contains a unique solution that might meet the stated goals. Some question sets might have more than one correct solution, while

others might not have a correct solution.

After you answer a question in this section, you will NOT be able to return to it. As a result, these questions will not appear in the review screen.

You have a Microsoft 365 tenant.

You have 100 IT administrators who are organized into 10 departments.

You create the access review shown in the exhibit. (Click the Exhibit tab.)

Create an access review

Access reviews allow reviewers to attest to whether users still need to be in a role.

Review name *

Description

Start date *

Frequency

Duration (in days) 14

End Never End by Occurrences

Number of times

End date

Users

Scope Everyone

Review role membership (permanent and eligible) *
Application Administrator and 72 others

Reviewers

Reviewers

(Preview) Fallback reviewers

Upon completion settings

Start

You discover that all access review requests are received by Megan Bowen.

You need to ensure that the manager of each department receives the access reviews of their respective department.

Solution: You add each manager as a fallback reviewer.

Does this meet the goal?

A. Yes

B. No

Correct Answer: B

Reference: <https://docs.microsoft.com/en-us/azure/active-directory/governance/create-access-review>

QUESTION 2

You implement the planned changes for SSPR.

What occurs when User3 attempts to use SSPR? To answer, select the appropriate options in the answer area.

NOTE: Each correct selection is worth one point.

Hot Area:

Answer Area

Number of authentication methods required:

Authentication methods that can be used:

Correct Answer:

Answer Area

Number of authentication methods required:

Authentication methods that can be used:

QUESTION 3

You have an Azure Active Directory (Azure AD) tenant named contoso.com that contains an Azure AD enterprise application named App1.

A contractor uses the credentials of user1@outlook.com.

You need to ensure that you can provide the contractor with access to App1. The contractor must be able to authenticate as user1@outlook.com.

What should you do?

- A. Run the New-AzureADMSInvitation cmdlet.
- B. Configure the External collaboration settings.
- C. Add a WS-Fed identity provider.
- D. Implement Azure AD Connect.

Correct Answer: A

Reference: <https://docs.microsoft.com/en-us/azure/active-directory/external-identities/b2b-quickstart-add-guest-users-portal> <https://docs.microsoft.com/en-us/powershell/module/azuread/new-azureadmsinvitation?view=azureadps-2.0>

QUESTION 4

Your company has a Microsoft 365 tenant.

The company has a call center that contains 300 users. In the call center, the users share desktop computers and might use a different computer every day. The call center computers are NOT configured for biometric identification.

The users are prohibited from having a mobile phone in the call center.

You need to require multi-factor authentication (MFA) for the call center users when they access Microsoft 365 services.

What should you include in the solution?

- A. a named network location
- B. the Microsoft Authenticator app
- C. Windows Hello for Business authentication
- D. FIDO2 tokens

Correct Answer: D

<https://docs.microsoft.com/en-us/azure/active-directory/authentication/concept-authentication-passwordless>

QUESTION 5

HOTSPOT

Your network contains an on-premises Active Directory domain named contoso.com. The domain contains the objects shown in the following table.

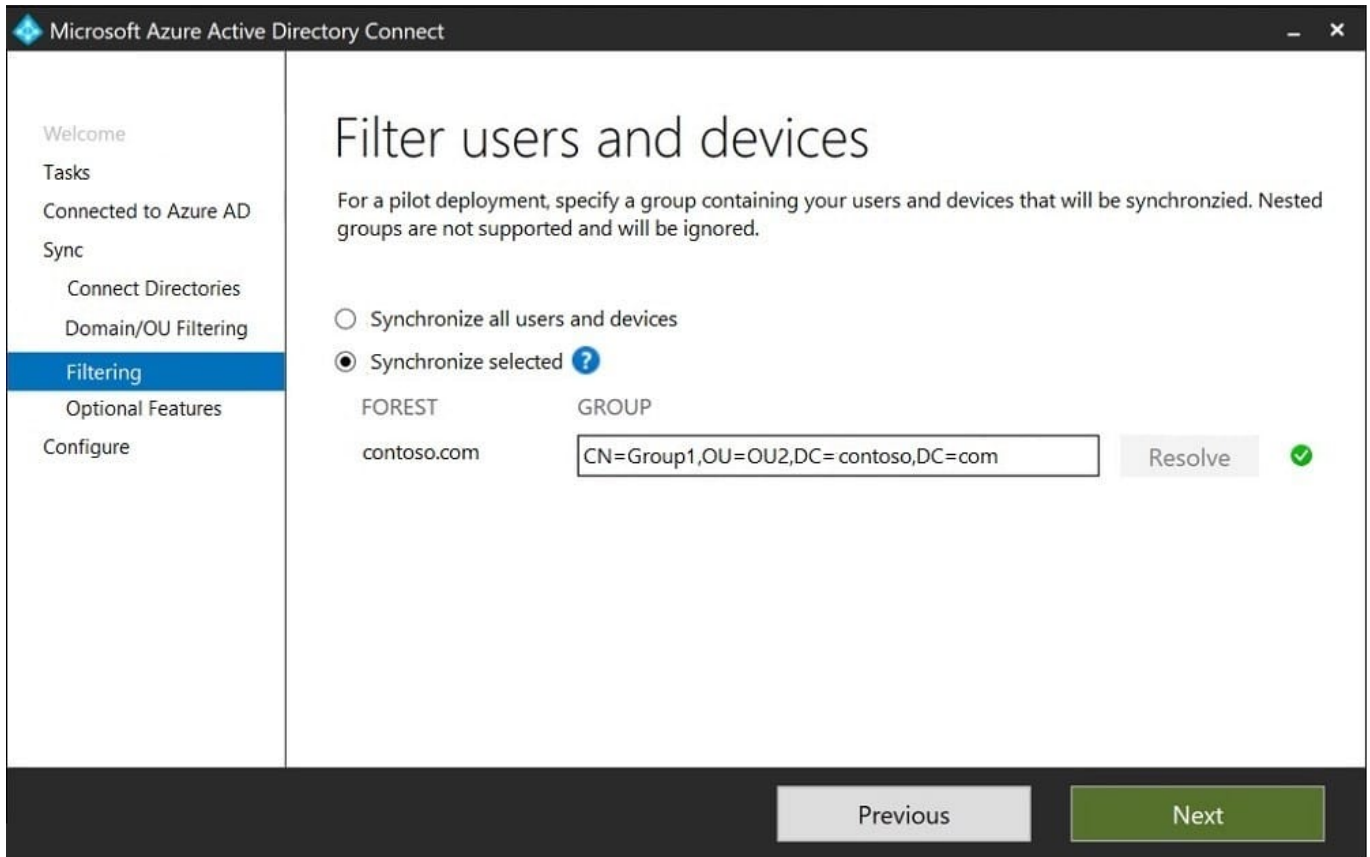
Name	Type	In organizational unit (OU)	Description
User1	User	OU1	User1 is a member of Group1.
User2	User	OU1	User2 is not a member of any groups.
Group1	Security group	OU2	User1 and Group2 are members of Group1.
Group2	Security group	OU1	Group2 is a member of Group1.

You install Azure AD Connect. You configure the Domain and OU filtering settings as shown in the Domain and OU Filtering exhibit. (Click the Domain and OU Filtering tab.) You configure the Filter users and devices settings as shown in the Filter Users and Devices exhibit. (Click the Filter Users and Devices tab.)

The screenshot shows the 'Domain and OU filtering' configuration window in Microsoft Azure Active Directory Connect. The window title is 'Microsoft Azure Active Directory Connect'. On the left is a navigation pane with options: Welcome, Tasks, Connected to Azure AD, Sync, Connect Directories, **Domain/OU Filtering**, Filtering, Optional Features, and Configure. The main area is titled 'Domain and OU filtering' and contains the following information:

- Text: 'If you change the OU-filtering configuration for a given directory, the next sync cycle will automatically perform full import on the directory.'
- Directory: A dropdown menu showing 'contoso.com' and a 'Refresh Ou/Domain' button with a help icon.
- Radio buttons:
 - Sync all domains and OUs
 - Sync selected domains and OUs
- A tree view for 'contoso.com' with the following items and checkboxes:
 - BuiltIn
 - Computers
 - Domain Controllers
 - ForeignSecurityPrincipals
 - Infrastructure
 - LostAndFound
 - Managed Service Accounts
 - OU1
 - OU2
 - Program Data
 - System
 - Users

At the bottom of the window are 'Previous' and 'Next' buttons.



For each of the following statements, select Yes if the statement is true. Otherwise, select No.

Hot Area:

Statements	Yes	No
User1 syncs to Azure AD.	<input type="radio"/>	<input type="radio"/>
User2 syncs to Azure AD.	<input type="radio"/>	<input type="radio"/>
Group2 syncs to Azure AD.	<input type="radio"/>	<input type="radio"/>

Correct Answer:

Statements	Yes	No
User1 syncs to Azure AD.	<input checked="" type="radio"/>	<input type="radio"/>
User2 syncs to Azure AD.	<input type="radio"/>	<input checked="" type="radio"/>
Group2 syncs to Azure AD.	<input checked="" type="radio"/>	<input type="radio"/>

QUESTION 6

HOTSPOT

You have an Azure Active Directory (Azure AD) tenant that contains the users shown in the following table.

Name	Role
User1	Conditional Access administrator
User2	Authentication administrator
User3	Security administrator
User4	Security operator

You plan to implement Azure AD Identity Protection.

Which users can configure the user risk policy, and which users can view the risky users report? To answer, select the appropriate options in the answer area.

NOTE: Each correct selection is worth one point.

Hot Area:

Configure the user risk policy:

User3 only
User3 and User4 only
User1, User2, and User3 only
User1, User3, and User4 only
User1, User2, User3, and User4

View the risky users report:

User3 only
User3 and User4 only
User1, User2, and User3 only
User1, User3, and User4 only
User1, User2, User3, and User4

Correct Answer:

Configure the user risk policy:

User3 only
User3 and User4 only
User1, User2, and User3 only
User1, User3, and User4 only
User1, User2, User3, and User4

View the risky users report:

User3 only
User3 and User4 only
User1, User2, and User3 only
User1, User3, and User4 only
User1, User2, User3, and User4

QUESTION 7

You have an Azure Active Directory (Azure AD) tenant that syncs to an Active Directory domain.

The on-premises network contains a VPN server that authenticates to the on-premises Active Directory domain.

The VPN server does NOT support Azure Multi-Factor Authentication (MFA).

You need to recommend a solution to provide Azure MFA for VPN connections.

What should you include in the recommendation?

- A. Azure AD Application Proxy
- B. an Azure AD Password Protection proxy
- C. Network Policy Server (NPS)
- D. a pass-through authentication proxy

Correct Answer: C

QUESTION 8

Your network contains an on-premises Active Directory domain that syncs to an Azure AD tenant.

Users sign in to computers that run Windows 10 and are joined to the domain.

You plan to implement Azure AD Seamless Single Sign-On (Azure AD Seamless SSO).

You need to configure the Windows 10 computers to support Azure AD Seamless SSO.

What should you do?

- A. Modify the Local intranet zone settings
- B. Configure Sign-in options from the Settings app.
- C. Enable Enterprise State Roaming.
- D. Install the Azure AD Connect Authentication Agent.

Correct Answer: A

Reference: <https://docs.microsoft.com/en-us/azure/active-directory/hybrid/how-to-connect-sso-quick-start>

QUESTION 9

HOTSPOT

You have a Microsoft 365 tenant that has 5,000 users. One hundred of the users are executives. The executives have a dedicated support team.

You need to ensure that the support team can reset passwords and manage multi-factor authentication (MFA) settings for only the executives. The solution must use the principle of least privilege.

Which object type and Azure Active Directory (Azure AD) role should you use? To answer, select the appropriate options in the answer area.

NOTE: Each correct selection is worth one point.

Hot Area:

Object type:

- An administrative unit
- A custom administrator role
- A dynamic group
- A Microsoft 365 group

Role:

- Authentication administrator
- Groups administrator
- Helpdesk administrator
- Password administrator

Correct Answer:

Object type:

- An administrative unit
- A custom administrator role
- A dynamic group
- A Microsoft 365 group

Role:

- Authentication administrator
- Groups administrator
- Helpdesk administrator
- Password administrator

QUESTION 10

You have a Microsoft 365 E5 subscription.

You create a user named User1.

You need to ensure that User1 can update the status of Identity Secure Score improvement actions.

Solution: You assign the Exchange Administrator role to User1.

Does this meet the goal?

A. Yes

B. No

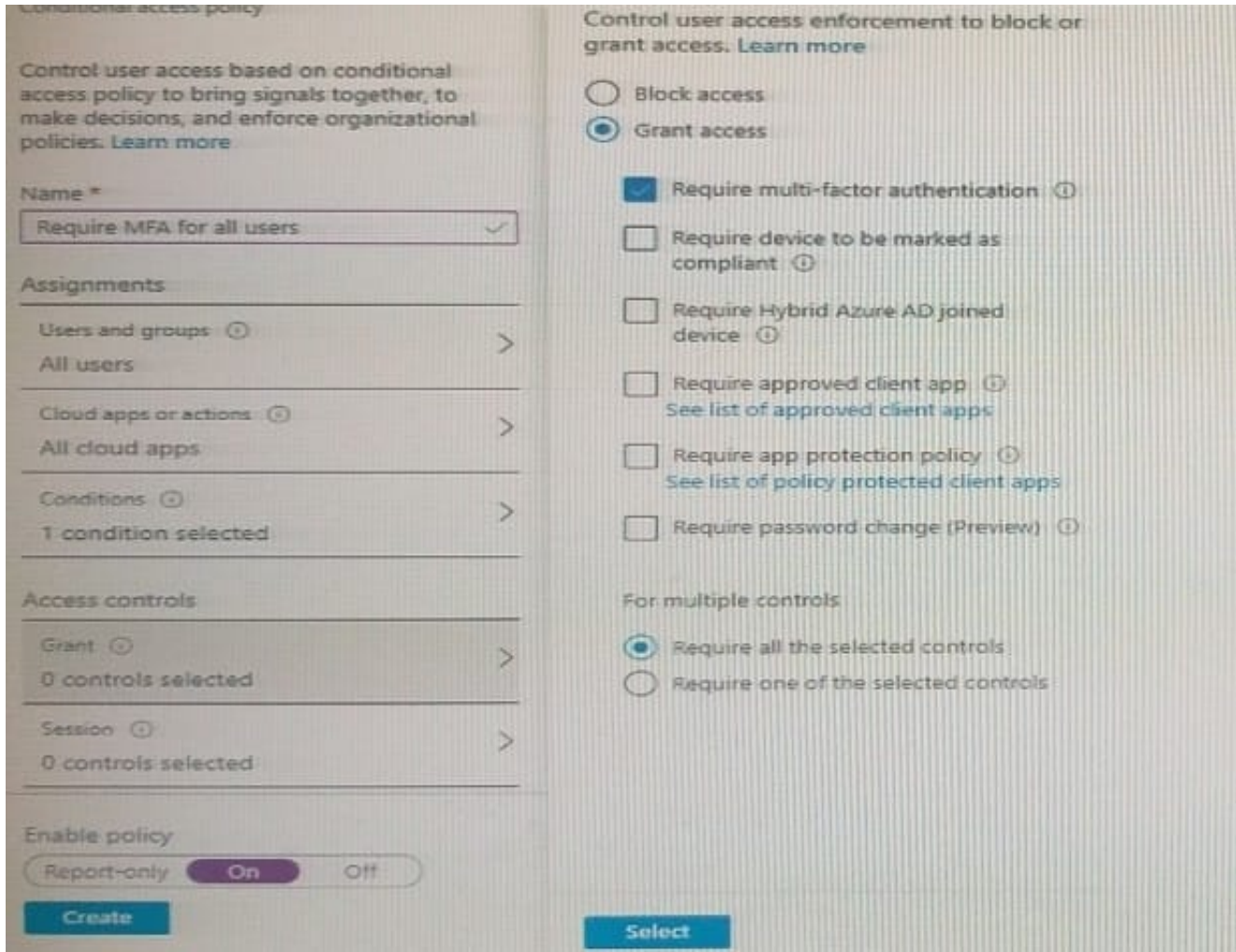
Correct Answer: A

QUESTION 11

HOTSPOT

You have a Microsoft 365 tenant.

You configure a conditional access policy as shown in the Conditional Access policy exhibit. (Click the Conditional Access policy tab.)



You view the User administrator role settings as shown in the Role setting details exhibit. (Click the Role setting details tab.)

Privileged Identity Management > ContosoAzureAD > User Administrator >

Role setting details - User Administrator

Privileged Identity Management | Azure AD roles

Edit

Activation

Setting	State
Activation maximum duration (hours)	8 hour(s)
Require justification on activation	Yes
Require ticket information on activation	No
On activation, require Azure MFA	Yes
Require approval to activate	Yes
Approvers	1 Member(s), 0 Group

Assignment

Setting	State
Allow permanent eligible assignment	No
Expire eligible assignments after	15 day(s)
Allow permanent active assignment	No
Expire active assignments after	1 month(s)
Require Azure Multi-Factor Authentication on active assignment	No
Require justification on active assignment	No

You view the User administrator role assignments as shown in the Role assignments exhibit. (Click the Role assignments tab.)

ContosoAzureAD > Identity Governance > Privileged Identity Management > ContosoAzureAD >

User Administrator | Assignments

Privileged Identity Management | Azure AD roles

+ Add assignments Settings Refresh Export Got feedback?

Eligible assignments Active assignments Expired assignments

Search by member name or principal name

Name	Principal name	Type	Scope	Membership
User Administrator				
Admin1	Admin1@m365x629615.onmicrosoft.com	User	Directory	Direct
Admin2	Admin2@m365x629615.onmicrosoft.com	User	Directory	Direct
Admin3	Admin3@m365x629615.onmicrosoft.com	User	Directory	Direct

For each of the following statement, select Yes if the statement is true. Otherwise, select No. NOTE: Each correct selection is worth one point.

Hot Area:

- | | Yes | No |
|--|-----------------------|-----------------------|
| Before Admin1 can perform a task that requires the User administrator role, an approver must approve The activation request. | <input type="radio"/> | <input type="radio"/> |
| Admin2 can request activation of the User Administrator role for a period of two hours. | <input type="radio"/> | <input type="radio"/> |
| If Admin3 connects to the Azure Active Directory admin Center, and then activates the User administrator role, Admin3 will be prompted to authenticate by using Multi-factor authentication (MFA) twice. | <input type="radio"/> | <input type="radio"/> |

Correct Answer:

- | | Yes | No |
|--|----------------------------------|----------------------------------|
| Before Admin1 can perform a task that requires the User administrator role, an approver must approve The activation request. | <input checked="" type="radio"/> | <input type="radio"/> |
| Admin2 can request activation of the User Administrator role for a period of two hours. | <input checked="" type="radio"/> | <input type="radio"/> |
| If Admin3 connects to the Azure Active Directory admin Center, and then activates the User administrator role, Admin3 will be prompted to authenticate by using Multi-factor authentication (MFA) twice. | <input type="radio"/> | <input checked="" type="radio"/> |

QUESTION 12

You have an Azure Active Directory (Azure AD) Azure AD tenant.

You need to bulk create 25 new user accounts by uploading a template file.

Which properties are required in the template file?

- A. displayName, identityIssuer, usageLocation, and userType
- B. accountEnabled, givenName, surname, and userPrincipalName

C. accountEnabled, displayName, userPrincipalName, and passwordProfile

D. accountEnabled, passwordProfile, usageLocation, and userPrincipalName

Correct Answer: C

QUESTION 13

You have a Microsoft 365 tenant.

The Azure Active Directory (Azure AD) tenant contains the groups shown in the following table.

Name	Type
Group1	Security
Group2	Distribution
Group3	Microsoft 365
Group4	Mail-enabled security

In Azure AD, you add a new enterprise application named App1. Which groups can you assign to App1?

A. Group1 and Group

B. Group2 only

C. Group3 only

D. Group1 only

E. Group1 and Group4

Correct Answer: C

QUESTION 14

You configure a new Microsoft 365 tenant to use a default domain name of contoso.com.

You need to ensure that you can control access to Microsoft 365 resource-, by using conditional access policy.

What should you do first?

A. Disable the User consent settings.

- B. Disable Security defaults.
- C. Configure a multi-factor authentication (MFA) registration policy.
- D. Configure password protection for Windows Server Active Directory.

Correct Answer: B

QUESTION 15

You need to track application access assignments by using Identity Governance. The solution must meet the delegation requirements. What should you do first?

- A. Modify the User consent settings for the enterprise applications.
- B. Create a catalog.
- C. Create a program.
- D. Modify the Admin consent requests settings for the enterprise applications.

Correct Answer: B

Reference: <https://docs.microsoft.com/en-us/azure/active-directory/governance/entitlementmanagement-overview>

[SC-300 PDF Dumps](#)

[SC-300 Exam Questions](#)

[SC-300 Braindumps](#)