

S10-210^{Q&As}

Storage Networking Management and Administration

Pass SNIA S10-210 Exam with 100% Guarantee

Free Download Real Questions & Answers **PDF** and **VCE** file from:

<https://www.certbus.com/s10-210.html>

100% Passing Guarantee
100% Money Back Assurance

Following Questions and Answers are all new published by SNIA
Official Exam Center

-  **Instant Download** After Purchase
-  **100% Money Back** Guarantee
-  **365 Days** Free Update
-  **800,000+** Satisfied Customers



QUESTION 1

You have determined that the root cause of your problem is related to invalid characters being intermittently transmitted on your 4 Gb FC link.

What describes this condition?

- A. Disparity error character
- B. Link hardware cannot detect k28.3 characters
- C. Link hardware cannot detect k28.5 characters
- D. Character does not fit in allowed 8b/10b codes or special characters

Correct Answer: D

QUESTION 2

Some business critical database applications have been suffering from slowly increasing performance issues with one enterprise SAN-attached storage system. In particular, the applications are showing higher than normal read response times.

What should the storage administrator monitor to determine the root cause?

- A. Storage utilization
- B. Available free space
- C. Write response time
- D. Cache hit rate

Correct Answer: D

QUESTION 3

You have a new storage array with the following drive types:

1.
SAS (6 Gbps)
2.
SSD
3.
SATA (6 Gbps)

4.

FC(4Gbps)

You need to decide which drive type to use based on speed, cost, and drive availability for your Tier 1 storage.

Which type of drive would you choose?

- A. SSD
- B. SAS
- C. SATA
- D. FC

Correct Answer: B

QUESTION 4

You want to visibly verify FC port initialization by reading an analyzer trace. Your objective is to find the frames associated with the initialization protocol to ensure that the FC device is operating correctly during the login process, to be recognized as part of the switched fabric, and appear in a directory of attached FC devices.

What must all Fibre Channel devices do to accomplish this?

- A. Log in using the Name server.
- B. Log in using the Fabric Controller.
- C. Log in using the Management server.
- D. Log in using the Fabric Login server.

Correct Answer: D

QUESTION 5

A company wants to implement a database which requires a storage subsystem with no more than 2 ms write latency and 1 ms read latency.

Which type of drive would you use?

- A. SATA
- B. FC
- C. SSD
- D. ATA

Correct Answer: C

QUESTION 6

A security audit reveals deficiencies in your company's FC zoning practices. Your manager asks you to make a recommendation to implement the most secure FC zoning possible. Your company is using switches from a single vendor.

What do you recommend?

- A. All zones should use frame-based hardware enforcement using pWWN identification exclusively for all configurations.
- B. All zones should use software-based enforcement using pWWN identification exclusively for all configurations.
- C. All zones should use frame-based hardware enforcement using destination port identification exclusively for all configurations.
- D. All zones should use software-based enforcement using destination port identification exclusively for all configurations.

Correct Answer: A

QUESTION 7

Which protocol commonly uses CNA devices?

- A. FCIP
- B. iFCP
- C. FCoE
- D. FCR

Correct Answer: C

QUESTION 8

What are two concerns when trying to migrate from one cloud storage provider to another one? (Choose two.)

- A. Stability
- B. Accessibility
- C. Different drive types
- D. CAN protocol compatibility

Correct Answer: AB

QUESTION 9

A storage subsystems Web browser management interface reports that the subsystem has become degraded and remotely opens a service request with the vendor. Your vendors level three storage support engineer wants to remotely access your storage subsystem for troubleshooting.

What is a SNIA Storage Security Best Current Practices solution?

- A. Open firewall ports to allow the vendor's support engineer to access the Web browser management interface.
- B. Provide the vendor's support engineer with a temporary user ID that has sudo access to become a super user on the storage subsystem; this ensures an audit trail for all remote support activities.
- C. Provide the vendor's support engineer with a shared remote control session where you can monitor what the support engineer is doing while troubleshooting the subsystem without needing to share credentials.
- D. Provide a temporary user ID to allow the vendor's support engineer to access the Web browser management interface remotely over HTTP/TLS.

Correct Answer: C

QUESTION 10

You need to merge two existing FC fabrics. After connecting the ISL to join the fabrics, numerous switches segment.

What should be done to prevent the segmentation?

- A. Physically separate the switches to opposite sides of the data center.
- B. Move business critical applications to clusters.
- C. Increase the frequency of snapshots for critical data.
- D. Assign domain IDs which are unique across both fabrics.

Correct Answer: D

QUESTION 11

You have a server which is booting from a SAN. After adding new SAN storage to a host, the host will not boot from the SAN.

What will resolve this problem?

- A. LUN masking
- B. Persistent binding
- C. Trunking
- D. Multiplex binding

Correct Answer: B

QUESTION 12

Click the Exhibit button.

stat_wtx	2493559995	4-byte words transmitted
stat_wrx	11910199	4-byte words received
stat_ftx	75073403	Frames transmitted
stat_frx	9008398	Frames received
stat_c2_frx	0	Class 2 frames received
stat_c3_frx	9008117	Class 3 frames received
stat_lc_rx	164	Link control frames received
stat_mc_rx	0	Multicast frames received
stat_mc_to	0	Multicast timeouts
stat_mc_tx	0	Multicast frames transmitted
er_enc_in	0	Encoding errors inside of frames
er_crc	0	Frames with CRC errors
er_trunc	0	Frames shorter than minimum
er_toolong	0	Frames longer than maximum
er_bad_eof	0	Frames with bad end-of-frame
er_enc_out	3073	Encoding error outside of frames
er_bad_os	14811	Invalid ordered set
er_rx_c3_timeout	0	Class 3 receive frames discarded due to timeout
er_tx_c3_timeout	0	Class 3 transmit frames discarded due to timeout
er_c3_dest_unreach	0	Class 3 frames discarded due to destination unreachable
er_other_discard	644	Other discards

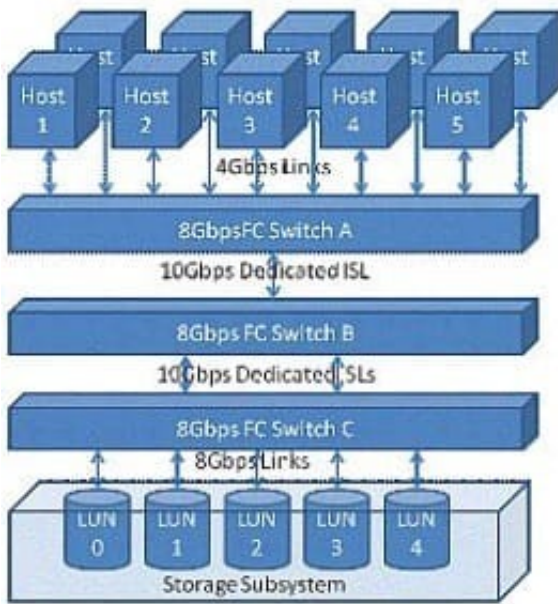
Referring to the exhibit, which three switch indicators will help you to determine the stability of a link? (Choose three.)

- A. er_crc
- B. er_toolong
- C. er_enc_in
- D. er_bad_eof
- E. er_trunk

Correct Answer: ACD

QUESTION 13

Click the Exhibit button.



The customer application requires a 50/50 R/W ratio with 100 MBps throughput requirements for each direction of the link. The application servers will simultaneously sustain these data rates across all LUNs in parallel.

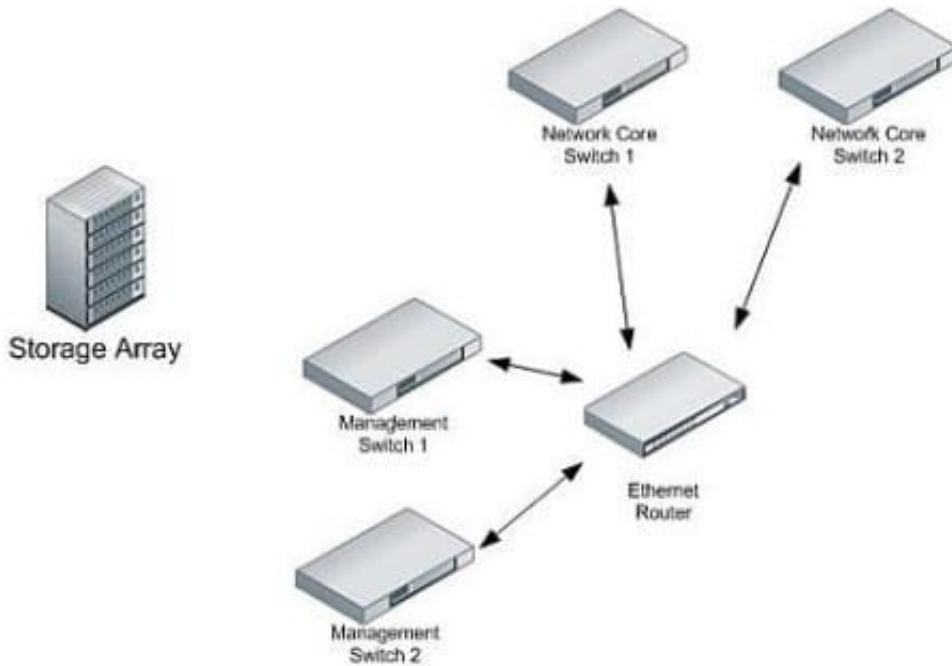
Referring to the exhibit, where will the oversubscribed link(s) occur?

- A. Links between hosts and Switch A
- B. Inter-switch link between Switch A and Switch B
- C. Inter-switch link between Switch B and Switch C
- D. Links between Switch C and storage

Correct Answer: D

QUESTION 14

Click the Exhibit button.



Your company has purchased a new storage array that has dual management access network ports. You need to connect the array and provide maximum redundancy without affecting production traffic. Referring to the exhibit, where should the ports be attached?

- A. Cable one management access network port into management switch 1 and the other port into management switch 2.
- B. Cable both management access network ports into management switch 2.
- C. Cable one management access network port into core switch 1 and the other into core switch 2.
- D. Cable both management access network ports into management switch 1.

Correct Answer: A

QUESTION 15

After provisioning a new LUN to a host, new storage cannot be detected on the host. Which three actions should be performed to troubleshoot this problem? (Choose three.)

- A. Scan memory on a host.
- B. Scan for new storage on the host,
- C. Verify that LUN mapping is correct.
- D. Verify that zoning on the FC switch is correct.
- E. Verify that the size of memory pages and block size is the same.

Correct Answer: BCD

[S10-210 PDF Dumps](#)

[S10-210 VCE Dumps](#)

[S10-210 Practice Test](#)