

PEGACSA72V1^{Q&As}

Certified System Architect (CSA) 72V1

Pass Pegasystems PEGACSA72V1 Exam with 100% Guarantee

Free Download Real Questions & Answers **PDF** and **VCE** file from:

<https://www.certbus.com/pegacsa72v1.html>

100% Passing Guarantee
100% Money Back Assurance

Following Questions and Answers are all new published by
Pegasystems Official Exam Center

- ⚙️ **Instant Download** After Purchase
- ⚙️ **100% Money Back** Guarantee
- ⚙️ **365 Days** Free Update
- ⚙️ **800,000+** Satisfied Customers



QUESTION 1

An assignment must route work to the current work group manager. Which router option do you use?

- A. Use the standard ToWorkGroup router and specify the current workgroup manager's ID as the destination.
- B. Use the standard ToWorkGroup router.
- C. Use the standard ToWorkGroupManager router.
- D. Use the standard ToWorkGroupManager router and specify the current user as the user routing the assignment.

Correct Answer: A

Reference <https://pdn.pega.com/routing-assignment>

QUESTION 2

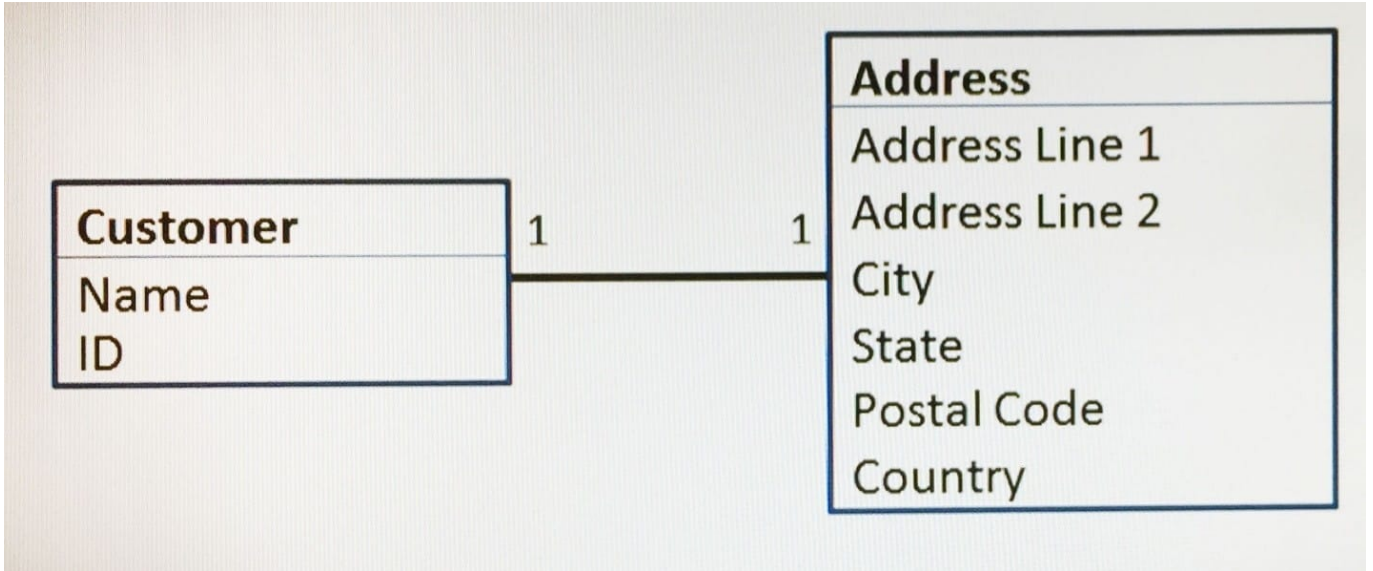
You are designing a case type that includes a process to perform when a case is rejected. How do you model this requirement in the case life cycle?

- A. Add a primary stage and add the rejection process to the stage.
- B. Add an alternate stage and add the rejection process as an optional process to the stage.
- C. Add an alternate stage and add the rejection process to the stage.
- D. Add the rejection process to all the primary stages as an optional process.

Correct Answer: C

QUESTION 3

A customer data object references an address as depicted by the data model below. How would you define the address property in the customer class?



- A. As a single value
- B. As a page
- C. As a page list
- D. As a page group

Correct Answer: C

Reference <https://pdn.pega.com/load-data-page-property>

QUESTION 4

You are designing a form that uses a repeating grid to display office furniture items. Which two data sources can you use as a source for a repeating grid? (Choose two.)

- A. Local data storage
- B. A page group property that holds the data
- C. A page list property that holds the data
- D. A single value property that contains the data in a local list

Correct Answer: BC

QUESTION 5

As part of an authorization process, you need to check whether members of a health care organization are eligible for coverage based on the policy contract terms. Your application uses an activity to perform this evaluation. Which shape would you use to add the activity to the process?

- A. Utility

- B. Assignment
- C. Connector
- D. Subprocess

Correct Answer: A

QUESTION 6

You have been asked to create a report that displays the following information:

- Assigned case worker (.pxAssignedOperatorID)
- Requestor (.pxCreateOperator)
- Request date (.pxCreateDateTime)
- Due date (.DueDate)
-

Assigned vendor (.VendorName)

The report contains a filter to only return purchase requests with a status (.pyStatusWork) of open.

Which property can you optimize to improve report performance?

- A.
.pxAssignedOperatorID
- B.
.DueDate
- C.
.pxCreateDateTime
- D.
.pyStatusWork

Correct Answer: B

QUESTION 7

A data page holds the local weather information and has the Reload if Older Than field set to 10 minutes. The data page is created at 11:22. The user then performs the following actions:

11:28 the user refreshes the weather information

11:40

the user refreshes the weather information At what time is the data page reloaded?

A.

11:38

B.

11:40

C.

11:32

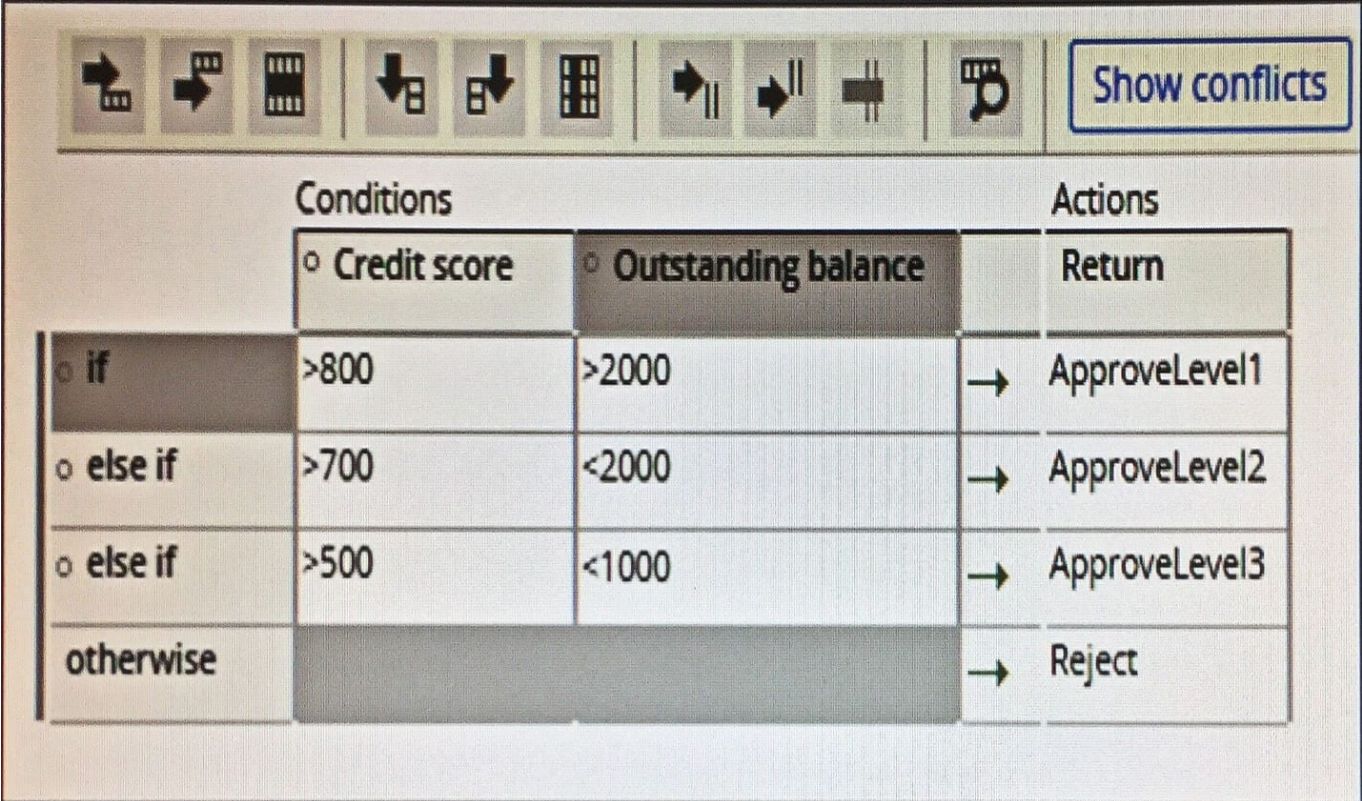
D.

11:28

Correct Answer: B

QUESTION 8

Review the following Decision Table: If the credit score is 723 and the outstanding balance is 2157, which value will be returned?



Conditions		Actions	
<input type="radio"/> Credit score	<input type="radio"/> Outstanding balance	Return	
<input type="radio"/> if	>800	>2000	→ ApproveLevel1
<input type="radio"/> else if	>700	<2000	→ ApproveLevel2
<input type="radio"/> else if	>500	<1000	→ ApproveLevel3
<input type="radio"/> otherwise			→ Reject

A. ApproveLevel3

- B. ApproveLevel1
- C. Reject
- D. ApproveLevel2

Correct Answer: C

QUESTION 9

In an application, three email addresses (work, home, and other) can be captured for a customer. You use .Email (work) to refer to the work email address. What type of property is used to capture the email addresses?

- A. Page
- B. Value group
- C. Value list
- D. Page group

Correct Answer: B

QUESTION 10

A list report includes columns for purchase requests and regional cost centers. A manager wants the report to show the total number of purchase requests for each of the regional cost centers. How would you configure the report definition?

- A. Use the purchase requests column to group the cost centers.
- B. Summarize the regional cost centers by count.
- C. Filter the results so that only cost center and purchase requests are included in the report.
- D. Summarize the purchase requests column by count.

Correct Answer: D

QUESTION 11

A new hire process includes a Screen Job Applicant assignment. The recruiter who has been assigned the task should complete it within 24 hours. If the assignment is not completed in 24 hours, the system automatically sends an email notification to the hiring manager.

How would you configure the process to ensure that the director receives the email after the goal is passed?

- A. Add a Send Email shape to the process after the assignment.
- B. Add an SLA with an escalation action to the assignment.

- C. Add the SendCorrespondence flow action to the assignment.
- D. Add a notification to the assignment.

Correct Answer: B

QUESTION 12

During a playback, you place a flow in draft mode to address which limitation?

- A. To prevent additional shapes from being added to the flow.
- B. To avoid errors due to references to rules that do not yet exist.
- C. To save an incomplete flow.
- D. To allow users to choose decision outcomes if a decision rule is not yet available.

Correct Answer: B

Reference: http://pegasystems2.http.internapcdn.net/pegasystems2/lrd_and_reference_docs/sae2_71ml6_StudentGuide_20141114.pdf(p.204)

QUESTION 13

While testing a form, you need to verify the contents of a data page in memory. Which tool do you use to view the current contents of the data page?

- A. The Tracer
- B. The Data Explorer
- C. The Clipboard tool
- D. Live UI

Correct Answer: C

QUESTION 14

A manager requests a report that contains the following columns: Create Date, Case ID, Create Operator, and Work Status. You must sort the cases so the case with the most recent create date appears at the top of the list and descends in order.

How would you design the report definition to support this requirement?

- A. Select Count in the Summarize column for Create Date.
- B. Make that Create Date the first column in the report.
- C. Select Highest to Lowest sort type for Create Date.

D. Add a filter condition where Create Date is greater than the current date.

Correct Answer: C

QUESTION 15

A process includes standard and gold program levels. When the deadline has passed for gold level cases, the system transfers the case to the manager. Which two configurations would you make to the SLA to support this requirement? (Choose two.)

- A. Add an advance flow action to the deadline.
- B. Add a transfer action to the deadline.
- C. Increase the urgency level for gold level cases.
- D. Use a when condition test for gold level cases.

Correct Answer: AB

Reference <https://pdn.pega.com/using-service-levels-slas-peg-7>

[PEGACSA72V1 VCE
Dumps](#)

[PEGACSA72V1 Practice
Test](#)

[PEGACSA72V1 Exam
Questions](#)