

# OMG-OCSMP-MBI300<sup>Q&As</sup>

OMG-Certified Systems Modeling Professional - Model Builder –  
Intermediate

**Pass OMG OMG-OCSMP-MBI300 Exam with 100%  
Guarantee**

Free Download Real Questions & Answers **PDF** and **VCE** file from:

<https://www.certbus.com/omg-ocsmp-mbi300.html>

100% Passing Guarantee  
100% Money Back Assurance

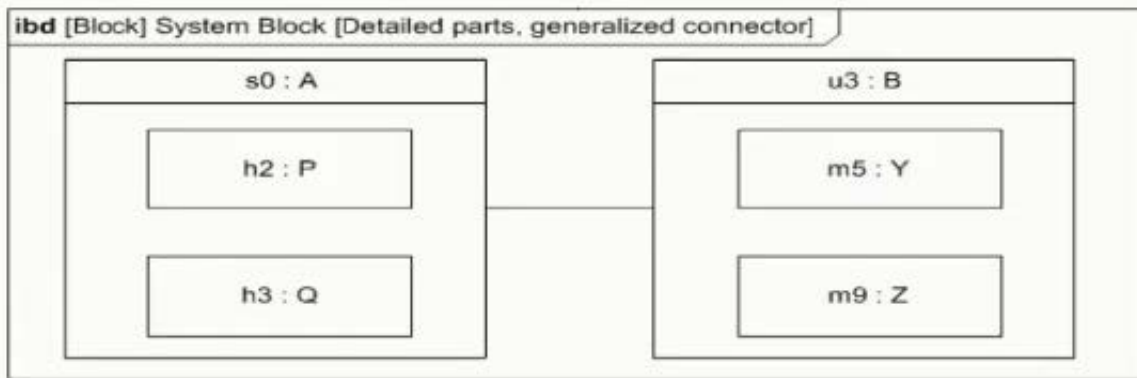
Following Questions and Answers are all new published by OMG  
Official Exam Center

- ⚙️ **Instant Download** After Purchase
- ⚙️ **100% Money Back** Guarantee
- ⚙️ **365 Days** Free Update
- ⚙️ **800,000+** Satisfied Customers



**QUESTION 1**

Choose the correct answer. Given the following diagram: What needs to be determined in order to model the connection between components s0 and u3 in more detail?



- A. whether component s0 subclasses component u3
- B. which parts of each component participate in the connection
- C. which parts of each component participate in a reference association
- D. whether any part that belongs to component s0 subclasses a part that belongs to component u3

Correct Answer: B

**QUESTION 2**

Choose the correct answer

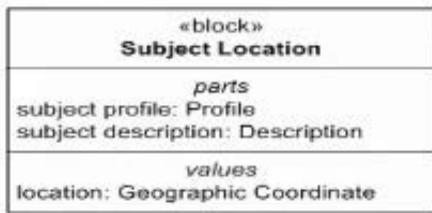
What is an effective and efficient approach to project modeling standards and conventions?

- A. Every project should create its own domain specific profile to describe modeling standards and conventions
- B. Organizations should create specific modeling standards and conventions to ensure modeling consistency across projects
- C. The SysML specification alone is sufficient to describe modeling standards and conventions when the modeling tool has a proper implementation of SysML
- D. The SysML specification and the modeling tool documentation are sufficient to describe modeling standards and conventions

Correct Answer: D

**QUESTION 3**

Choose the correct answer. Given the following block:



Which SysML construct correctly models Geographic Coordinate?

- A. 

«valueType» <b>Geographic Coordinate</b>
dimension = Longitude unit = Latitude
- B. 

«constraint» <b>Geographic Coordinate</b>
<i>constraints</i>
<i>parameters</i> latitude: Real longitude: Real
- C. 

«valueType» <b>Geographic Coordinate</b>
<i>values</i> latitude: Real longitude: Real
- D. 

«block» <b>Geographic Coordinate</b>
<i>parts</i> latitude: Real longitude: Real

- A. Option A  
 B. Option B  
 C. Option C  
 D. Option D

Correct Answer: C

**QUESTION 4**

Choose the correct answer

What is the key distinction between a profile and a meta model?

- A. A metamodel is used to define the stereotypes and the properties of a profile.

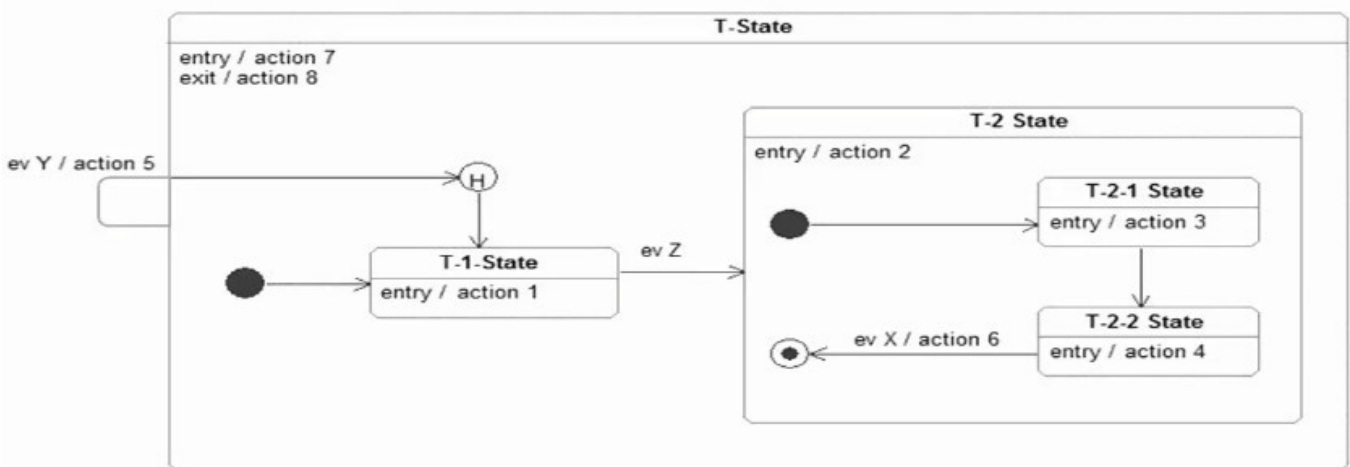
- B. A metamodel is the result of applying a profile to a user model to define new domain concepts.
- C. A profile is a mechanism for extending existing concepts defined in a metamodel.
- D. A profile is a mechanism for defining stereotypes, which is not related to metamodels in any way.

Correct Answer: B

**QUESTION 5**

Choose the correct answer.

Assume the following state machine is in the T-1 State when ev Z occurs:



Subsequently ev V occurs.

Which sequence of actions will be executed?

- A. action 2
- B. action 2 action 3
- C. action 2 action 4
- D. action 3
- E. action 4
- F. action 5 action 2 action 3
- G. action 5 action 2 action 4
- H. action 5 action 1 action 2 action 3
- I. action 5 action 1 action 2 action 4
- J. action 8 action 5 action 7 action 2 action 3

K. action 8 action 5 action 7 action 2 action 3 action 4

L. action 8 action 5 action 7 action 2 action 4

Correct Answer: I

---

#### QUESTION 6

Choose the correct answer

Where may constraint blocks be defined?

- A. on any diagram
- B. only on parametric diagrams
- C. only on block definition diagrams
- D. only on block definition diagrams or package diagrams
- E. only on block definition diagrams or parametric diagrams
- F. only on block definition diagrams or internal block diagrams

Correct Answer: D

---

#### QUESTION 7

The final version of the diagram must depict that a SoftwareSession is created by some activity of a:User.

Which change must be made to the Initial draft diagram to meet this requirement?

- A. The arrow "Start Software" has to be solid and with a closed head.
- B. The first activation on the lifeline SoftwareSession has to be removed
- C. The arrow "Start Software" has to end at the tail and not at the head of the lifeline SoftwareSession.
- D. No change is required.

Correct Answer: C

---

#### QUESTION 8

Choose the correct answer

What is the significance of the verify relationship?

- A. The verify relationship is restricted to relating a requirement to a testCase only.
- B. The verify relationship extends the refine relationship to specify how the requirement will be verified.

C. The verify relationship is an extension of the satisfies relationship, relating a block to a verification activity.

D. The verify relationship relates a requirement to some other model element such as a testCase. activity, or interaction that can prove the requirement has been satisfied.

E. The verify relationship is used to prove. That the assertion of the satisfy relationship is true Thus, a verify relationship is meaningless without a corresponding satisfy relationship.

Correct Answer: B

---

### QUESTION 9

Choose the correct answer.

How should a generalization set between Shape (superclass) and subclasses Polygon.

Rectangle and Triangle be marked?

A. {complete, disjoint}

B. {incomplete, disjoint}

C. {complete, overlapping}

D. {incomplete, overlapping}

Correct Answer: B

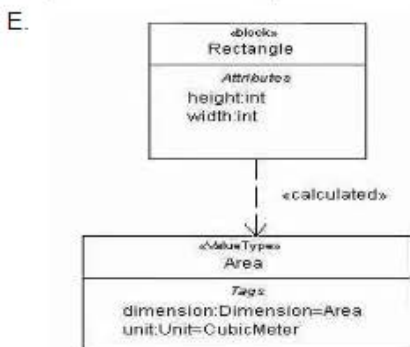
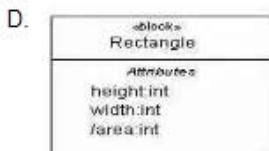
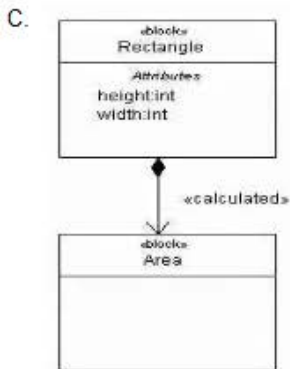
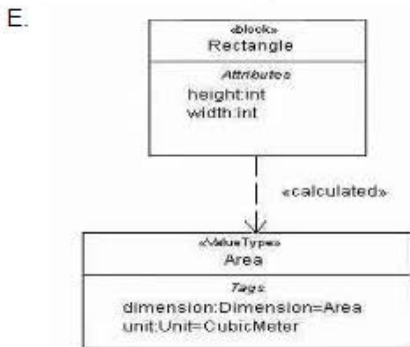
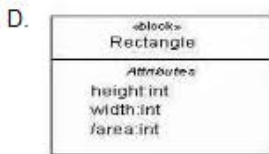
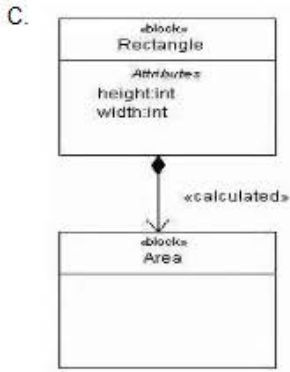
---

### QUESTION 10

Choose the correct answer.

The area of a rectangle is calculated through analysis of its height and width:

How is this represented in a model?

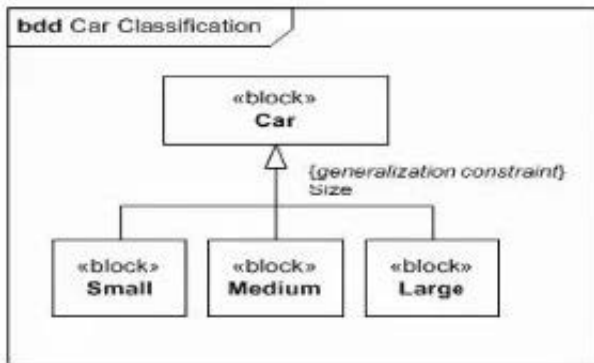


- A. Option A
- B. Option B
- C. Option C
- D. Option D
- E. Option E

Correct Answer: A

### QUESTION 11

Choose the correct answer. Given the following diagram:



Which generalization constraint keywords should be used to specify that: 1- the set of all instances of Car is not fully covered by its three shown subtypes, Small, Medium, and Large, AND 2- an instance of Car is exclusively either Small Medium, or Large

- A. (not full, exclusive)
- B. (partial, exclusive)
- C. {Incomplete, xor}
- D. (incomplete disjoint)
- E. {subset, disjoint}

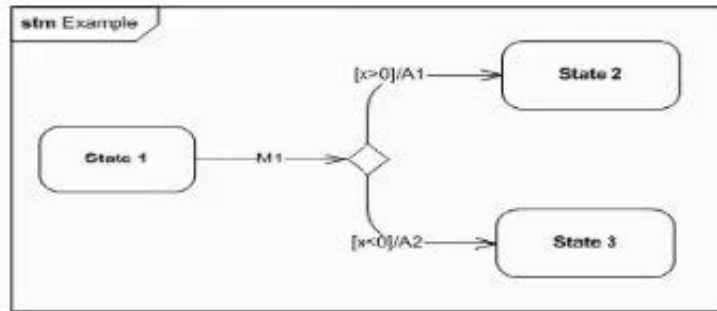
Correct Answer: C

### QUESTION 12

Choose the correct answer.



Given the following diagram:



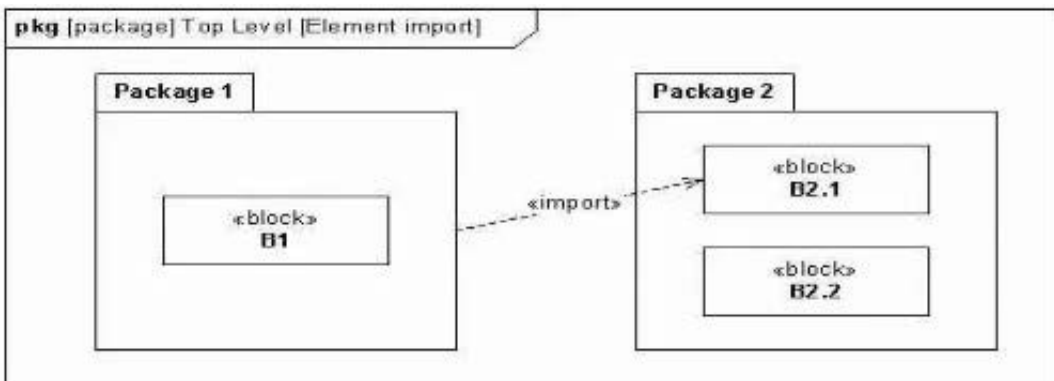
How does state machine Example behave after receipt of event M1 with x equal to zero?

- A. It remains in State 1.
- B. it arbitrarily enters either State 2 or State 3.
- C. It terminates
- D. Its behavior is not defined.

Correct Answer: A

**QUESTION 13**

Choose the correct answer. Given the following diagram:



Which diagram is correct?



A. Option A

B. Option B

C. Option C

D. Option D

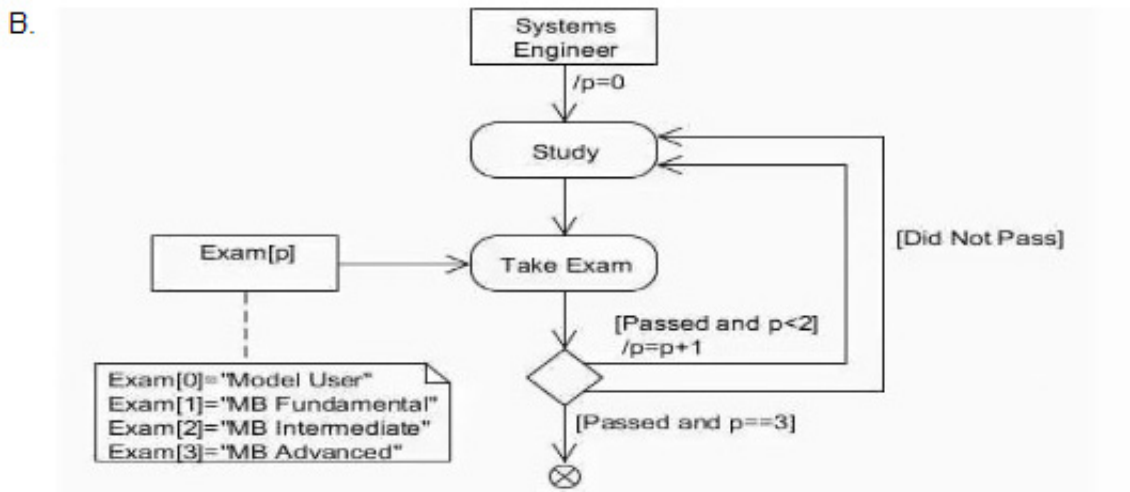
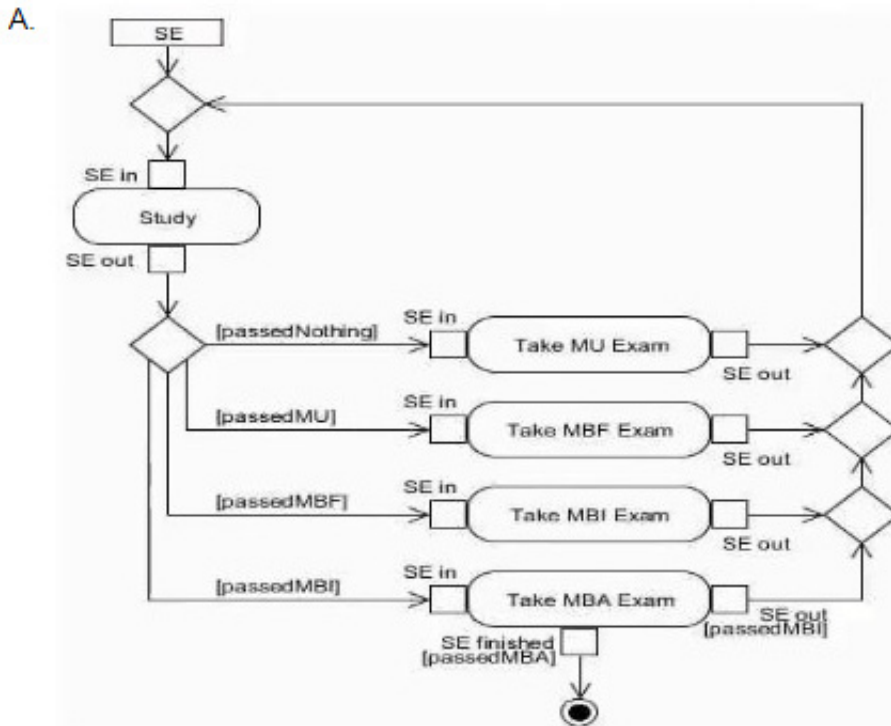
Correct Answer: C

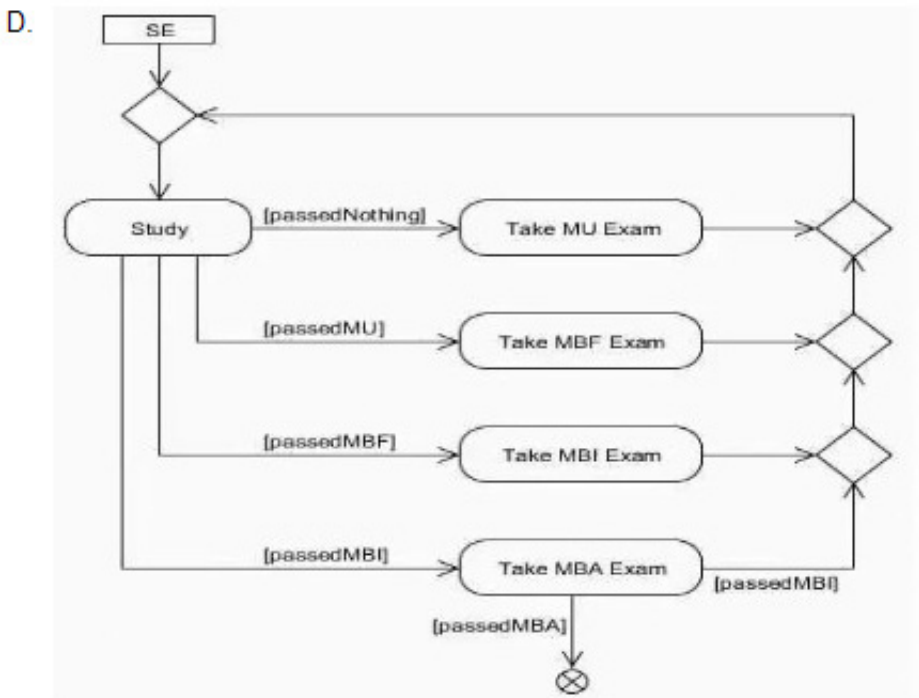
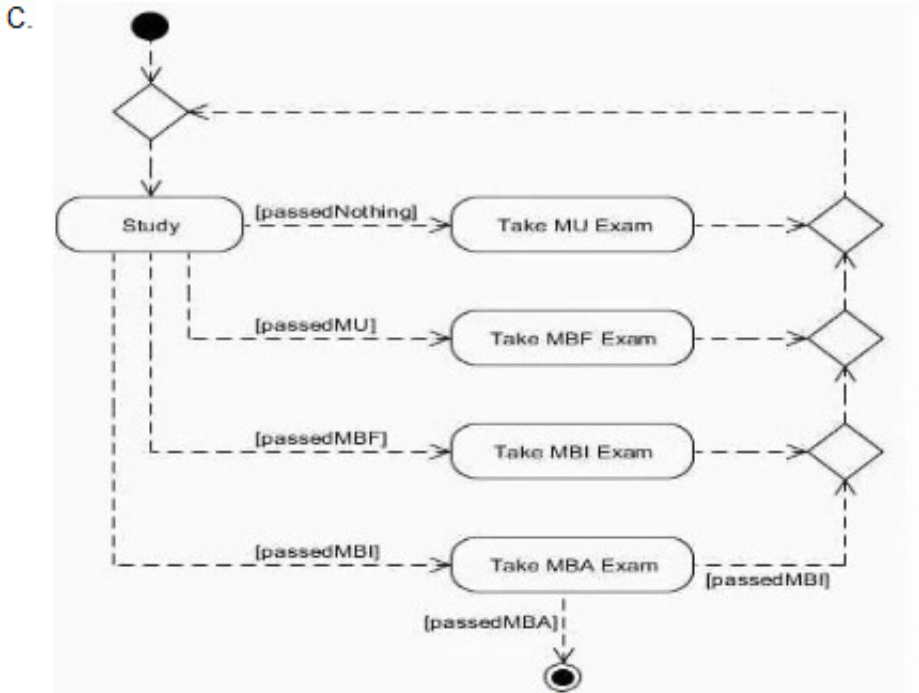
#### QUESTION 14

Choose the correct answer.

To "show what you know" about SysML a Systems Engineer (SE) must take a total of four examinations in order Model User (MU), Model Bulkier Fundamental (MBF), Model Builder intermediate (MBI) and Model Builder Advanced (MBA). The SE must also study before taking each exam.

Which activity diagram fragment correctly uses object state constraints to document the process of studying and taking the exams, ensuring that the exams are taken in order of increasing difficulty, and allowing for the possibility that exams may have to be repeated?





A. Option A

B. Option B

C. Option C

D. Option D

Correct Answer: B

### QUESTION 15

Choose the correct answer.

Which SysML construct specifies a probability distribution to the values of a property such as a basic interval distribution between min and max?

- A. a range property
- B. an interval property
- C. a probability property
- D. a distributed property

Correct Answer: A

[OMG-OCSMP-MBI300  
Practice Test](#)

[OMG-OCSMP-MBI300  
Exam Questions](#)

[OMG-OCSMP-MBI300  
Braindumps](#)