

# NS0-175<sup>Q&As</sup>

Cisco and NetApp FlexPod Design Specialist

## Pass NetApp NS0-175 Exam with 100% Guarantee

Free Download Real Questions & Answers **PDF** and **VCE** file from:

<https://www.certbus.com/ns0-175.html>

100% Passing Guarantee  
100% Money Back Assurance

Following Questions and Answers are all new published by NetApp  
Official Exam Center

-  **Instant Download** After Purchase
-  **100% Money Back** Guarantee
-  **365 Days** Free Update
-  **800,000+** Satisfied Customers



### QUESTION 1

Your environment currently has a 12-node NetApp cluster serving iSCSI. You need to add at least four more nodes to serve FC to your environment.

In this scenario, what should you do?

- A. You can safely add up to 4 more storage controllers in the current cluster
- B. You can safely add up to 6 more storage controllers in the current cluster
- C. You must create a new cluster with the new storage controllers
- D. You can safely add up to 12 more storage controllers in the current cluster

Correct Answer: A

---

### QUESTION 2

Which Cisco UCS Fabric Interconnect model has multiple 100 Gbps ports available for use?

- A. Cisco UCS 6332
- B. Cisco UCS 6324
- C. Cisco UCS 6454
- D. Cisco UCS 6332-16UP

Correct Answer: C

Reference: <https://www.cisco.com/c/dam/en/us/products/collateral/servers-unified-computing/ucs-b-seriesblade-servers/6400-specsheet.pdf>

---

### QUESTION 3

You are creating a FlexPod with a significant AI workload and would like to use NVIDIA's SXM2-based GPUs.

Which Cisco UCS server would you use in this scenario?

- A. Cisco UCS C240 M5
- B. Cisco UCS B200 M5
- C. Cisco UCS C480 ML M5
- D. Cisco UCS C125 M5

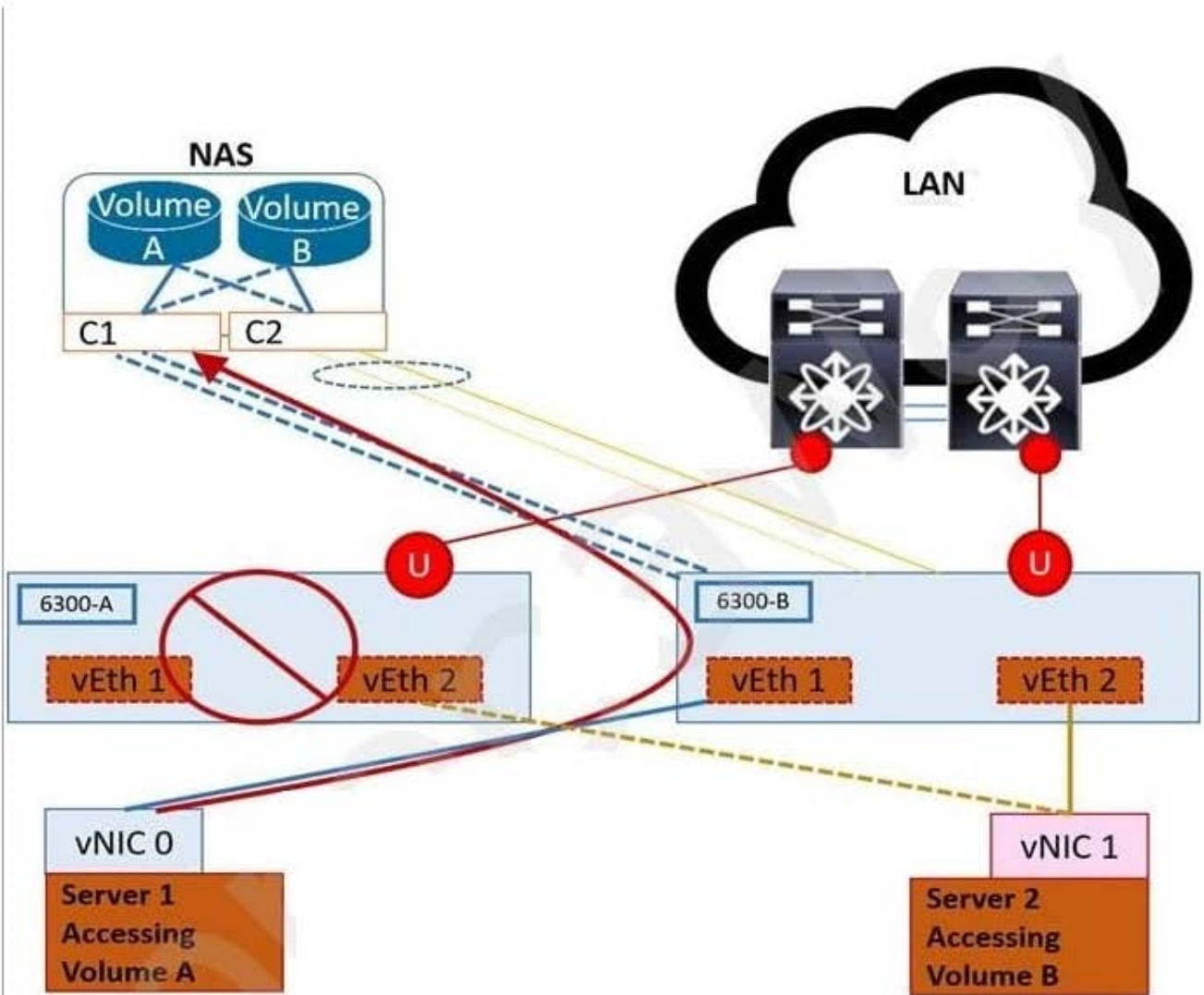
Correct Answer: C

Reference: [https://docs.netapp.com/us-en/flexpod/pdfs/sidebar/FlexPod\\_Datacenter\\_Technical\\_Specifications.pdf](https://docs.netapp.com/us-en/flexpod/pdfs/sidebar/FlexPod_Datacenter_Technical_Specifications.pdf)

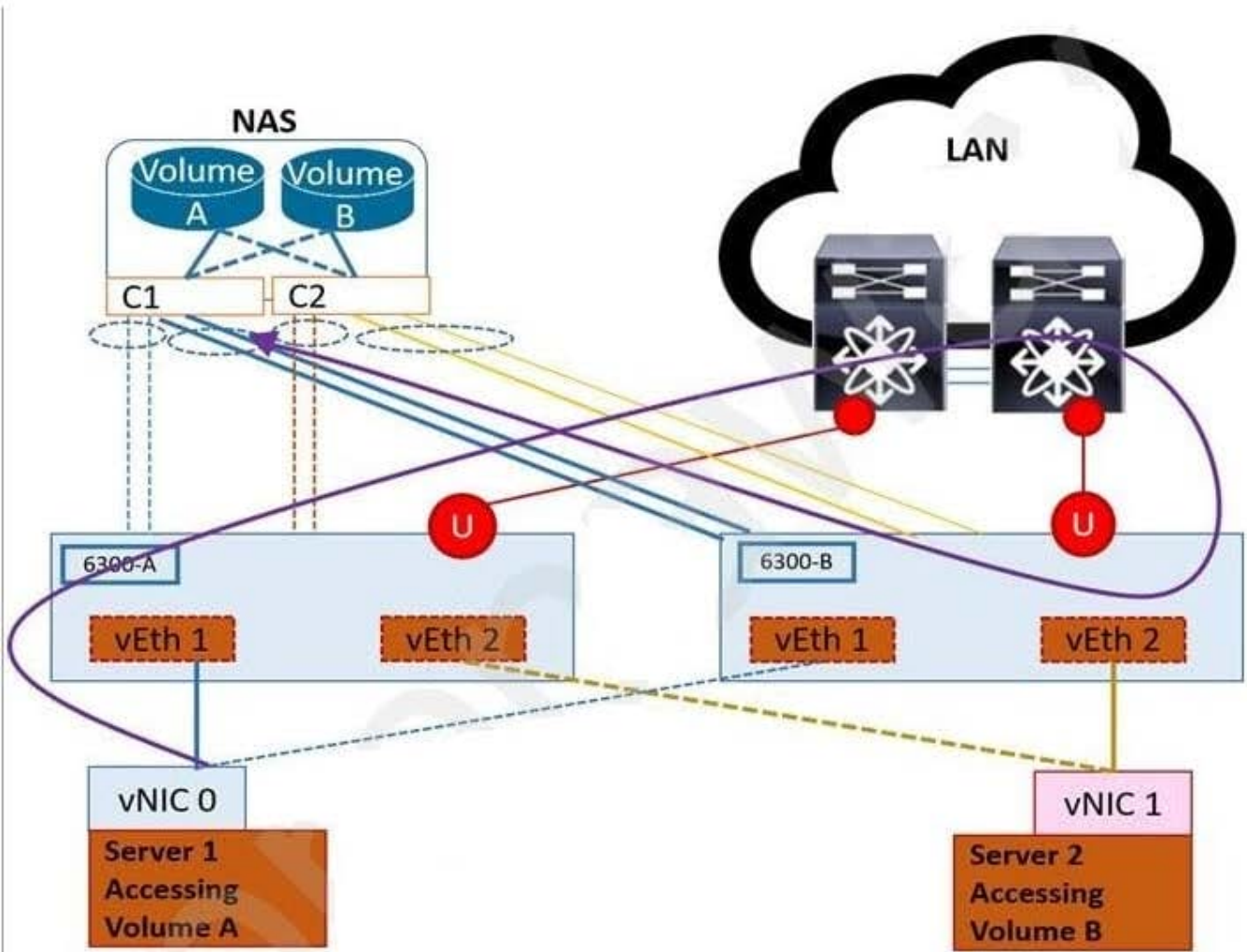
---

#### **QUESTION 4**

Click the Exhibit button. Exhibit 1.

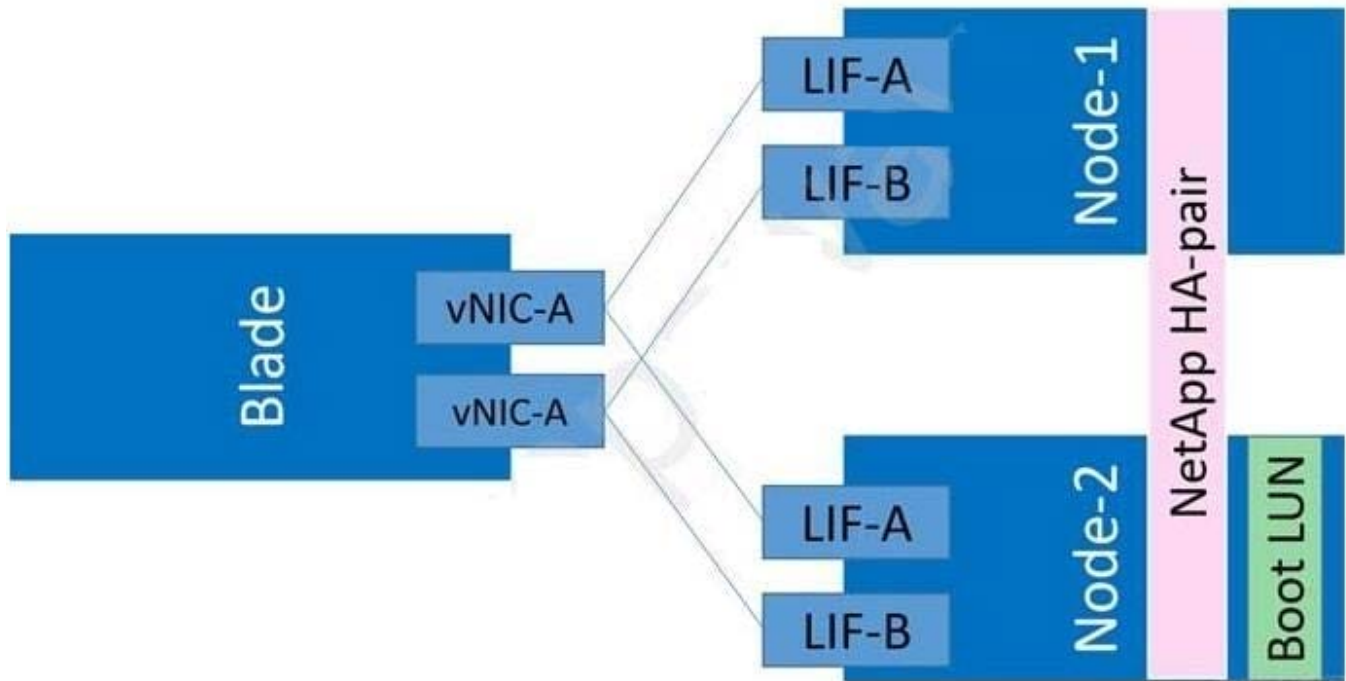


**Figure 1**



**Figure 2**

Exhibit 2.



Referring to the exhibit, UCS Fabric Interconnect 6300-A fails as shown in Figure 1. Due to the storage LIF configuration, after UCS Fabric Interconnect 6300-A is restored, traffic flows as shown in Figure 2.

To enable this capability, on which two UCS port types should storage VLANs be accessible? (Choose two.)

- A. uplink ports
- B. appliance ports
- C. fabric ports
- D. switch ports

Correct Answer: AB

Reference: [https://www.cisco.com/c/en/us/td/docs/unified\\_computing/ucs/ucs-manager/GUI-User-Guides/Getting-Started/3-2/b\\_UCSM\\_Getting\\_Started\\_Guide\\_3\\_2/b\\_UCSM\\_Getting\\_Started\\_Guide\\_3\\_2\\_chapter\\_010.pdf](https://www.cisco.com/c/en/us/td/docs/unified_computing/ucs/ucs-manager/GUI-User-Guides/Getting-Started/3-2/b_UCSM_Getting_Started_Guide_3_2/b_UCSM_Getting_Started_Guide_3_2_chapter_010.pdf) (8)

**QUESTION 5**

A customer is deploying a FlexPod Datacenter and planning to boot from SAN each their UCS blades using the Fibre Channel Protocol.

In this scenario, which three actions would accomplish their objective? (Choose three.)

- A. Use only a pair of Cisco Nexus 9318YC-FX switches
- B. Create an igroup on the NetApp ONTAP storage system with the appropriate IQNs

- C. Use only a pair of Cisco Nexus 9336C-FX2 switches
- D. Use a pair of Cisco MDS 9148T and a pair of Cisco 9336C-FX2 switches together
- E. Create an igroup on the NetApp ONTAP storage system with the appropriate WWPNS

Correct Answer: ABE

---

#### QUESTION 6

What are the 1U, rack mountable, Fabric Extenders (FEX) used for in a FlexPod environment?

- A. to allow for the UCS C-Series to be connected to the Fabric Interconnects
- B. to allow for the UCS S-Series to be connected to the Fabric Interconnects
- C. to allow for extra UCS Blade Chassis to use the Fabric Interconnects
- D. to allow for the UCS B-Series to be connected to the Fabric Interconnects

Correct Answer: A

---

#### QUESTION 7

A customer has a workload that requires an extremely dense deployment of CPU cores. For this workload, they have chosen to deploy servers that use AMD EPYC processors.

Which Cisco UCS server product would you use to satisfy this workload demand?

- A. Cisco UCS C240 M5
- B. Cisco UCS B480 M5
- C. Cisco UCS B200 M5
- D. Cisco UCS C125 M5

Correct Answer: D

Reference: <https://www.cisco.com/c/en/us/products/collateral/servers-unified-computing/ucs-c4200-seriesrack-server-chassis/cisco-ucs-c125-m5-servers-horizon.html>

---

#### QUESTION 8

A customer wants to upgrade their code fabric between each site with a modular chassis switch that supports up to 400GbE per port to accommodate more business transaction volume.

In this scenario, which device would help them accomplish their objective?

- A. Cisco Nexus 9504
- B. Cisco Nexus 9332C
- C. Cisco MDS 9706
- D. Cisco Catalyst 9400

Correct Answer: A

Reference: <https://www.cisco.com/c/en/us/solutions/data-center/high-capacity-400g-data-centernetworking/index.html>

---

### QUESTION 9

You want to ensure the uniqueness of the Cisco UCS WWNNs and WWPNNs in the SAN for a FlexPod solution.

In this situation, Cisco recommends using which WWN prefix for all blocks in a pool?

- A. 30:00:00:25:B5:XX:XX:XX
- B. 40:00:00:25:B5:XX:XX:XX
- C. 20:00:00:25:B5:XX:XX:XX
- D. 60:00:00:25:B5:XX:XX:XX

Correct Answer: C

Reference: [https://www.cisco.com/c/en/us/td/docs/unified\\_computing/ucs/ucs-manager/GUI-User-Guides/Storage-Mgmt/4-0/b\\_UCSM\\_GUI\\_Storage\\_Management\\_Guide\\_4\\_0/b\\_UCSM\\_GUI\\_Storage\\_Management\\_Guide\\_4\\_0\\_chapter\\_0111.html](https://www.cisco.com/c/en/us/td/docs/unified_computing/ucs/ucs-manager/GUI-User-Guides/Storage-Mgmt/4-0/b_UCSM_GUI_Storage_Management_Guide_4_0/b_UCSM_GUI_Storage_Management_Guide_4_0_chapter_0111.html)

---

### QUESTION 10

A customer wants to replace their Cisco UCS 6248UP with the current Cisco UCS 6454. They are currently using six 16 Gbit uplinks per Fabric Interconnect for FC and do not want to change the speed and number of ports used.

In this scenario, what is the minimum number of unified ports that must be configured for FC for a comparable configuration?

- A. 8
- B. 6
- C. 16
- D. 12

Correct Answer: A

Reference: [https://www.cisco.com/c/en/us/td/docs/unified\\_computing/ucs/ucs-manager/GUI-User-Guides/ Network-](https://www.cisco.com/c/en/us/td/docs/unified_computing/ucs/ucs-manager/GUI-User-Guides/Network-)

---



Mgmt/4-0/b\_UCSM\_Network\_Mgmt\_Guide\_4\_0/ b\_UCSM\_Network\_Mgmt\_Guide\_4\_0\_chapter\_0100.html

[NS0-175 VCE Dumps](#)

[NS0-175 Study Guide](#)

[NS0-175 Braindumps](#)