

# NS0-161<sup>Q&As</sup>

NetApp Certified Data Administrator, ONTAP

## Pass NetApp NS0-161 Exam with 100% Guarantee

Free Download Real Questions & Answers **PDF** and **VCE** file from:

<https://www.certbus.com/ns0-161.html>

100% Passing Guarantee  
100% Money Back Assurance

Following Questions and Answers are all new published by NetApp  
Official Exam Center

-  **Instant Download** After Purchase
-  **100% Money Back** Guarantee
-  **365 Days** Free Update
-  **800,000+** Satisfied Customers



**QUESTION 1**

Click the Exhibit button.

```
cluster1::>vserver services ndmp show

type
-----
SVM1          true          challenge

cluster1::> system services ndmp show
Node          Enabled          Clear Text          User ID
-----
cluster1-01   false           true                root

cluster1::>system services ndmp node-scope-mode status
NDMP node-scope-mode is disabled.

cluster1::> network interface show
Vserver      Logical      Status          Network          Current          Current          Is
Interface    Admin/Oper   Address/Mask    Node             Port             Home
-----
SVM1
cluster      data_lif1    up/up           192.168.150.250/24 cluster1-01     e0a true
cluster      cluster_mgmt up/up           192.168.150.240/24 cluster1-01     e0c true
cluster      cluster1-01_ic1 up/up           192.168.150.242/24 cluster1-01     e0d true
cluster      cluster1-01_mgmt1 up/up           192.168.150.241/24 cluster1-01     e0c true
4 entries were displayed.
```

You are configuring your tape backup software to authenticate to your single-node cluster by using NDMP. Referring to the exhibit, which LIF do you use to connect? (Choose the best answer.)

- A. cluster\_mgmt
- B. cluster1-01\_ic1
- C. cluster-01\_mgmt1
- D. data\_lif1

Correct Answer: D

**QUESTION 2**

Click the Exhibit button.



You have a mission-critical SQL application that uses a single SMB 3.1.1 share to host its database. The storage node that is hosting the SMB share sql01\_ca for the SQL database experiences a hardware failure and fails over to the surviving node.

Referring to the exhibit, what is the state of the SMB share for the SQL database during the failover? (Choose the best answer.)

- A. The SMB share will be available, but all data is corrupted.
- B. The SMB share will be unavailable until node failback.
- C. The SMB share will be available, and all data is accessible.
- D. The SMB share is unavailable due to its stateful nature.

Correct Answer: A

### QUESTION 3

Which two resources are managed by an SVM administrator? (Choose two.)

- A. disks
- B. aggregates
- C. Snapshot copies
- D. LUNs

Correct Answer: CD

Reference: [https://thinksystem.lenovofiles.com/storage/help/index.jsp?topic=%2Fcluster\\_management\\_using\\_thinksystem](https://thinksystem.lenovofiles.com/storage/help/index.jsp?topic=%2Fcluster_management_using_thinksystem)

em\_storage\_manager\_for\_dm\_series\_9-6%2F1A0349D6-AB434D05-9413-EFBB89B847EB\_.html

**QUESTION 4**

Which two statements are true about epsilon? (Choose two.)

- A. In a two-node cluster, each node holds epsilon.
- B. Epsilon is automatically assigned to the first node when the cluster is created.
- C. Epsilon is automatically assigned to the last node when the cluster is created.
- D. Epsilon is an extra fractional vote that enables quorum.

Correct Answer: BD

Reference: <https://library.netapp.com/ecmdocs/ECMP1196798/html/GUID-EFE1DEF4-8B87-4C4A-8E4EC6C79F760710.html#:~:text=Epsilon%20is%20automatically%20assigned%20to,a%20factor%20in%20determining%20quorum>

**QUESTION 5**

Click the Exhibit button.

```
cluster1::> volume show -vserver vs2 -is-constituent *
Vserver  Volume  Aggregate  State  Type  Size  Available  Used%
-----
vs2      fg1      -          online RW    200TB  76TB      62%
vs2      fg1_0001 aggr1      online RW    25TB   10MB      99%
vs2      fg1_0002 aggr2      online RW    25TB   12TB      52%
vs2      fg1_0003 aggr1      online RW    25TB   10TB      60%
vs2      fg1_0004 aggr2      online RW    25TB   11TB      60%
vs2      fg1_0005 aggr1      online RW    25TB   10TB      56%
vs2      fg1_0006 aggr2      online RW    25TB   12TB      52%
vs2      fg1_0007 aggr1      online RW    25TB   10TB      60%
vs2      fg1_0008 aggr2      online RW    25TB   11TB      56%

cluster1::> aggr show
Aggregate  Size      Available  Used%  State  #Vols  Nodes  RAID Status
-----
aggr1      300TB    103.71TB  65%    online  30     cluster1-01  raid_dp, normal
aggr0_root 368.4GB  15.83GB   96%    online  1     cluster1-02  raid_dp, normal
aggr2      300TB    176.51TB  41%    online  25     cluster1-02  raid_dp, normal
aggr0_root 368.4GB  15.83GB   96%    online  1     cluster1-01  raid_dp, normal
4 entries were displayed
```

You have an ONTAP cluster that is running a FlexGroup that is serving SMB data out to various users. One of the users receives an error when trying to modify an existing file.

What is the cause of the problem? (Choose the best answer.)

- A. The FlexGroup is full

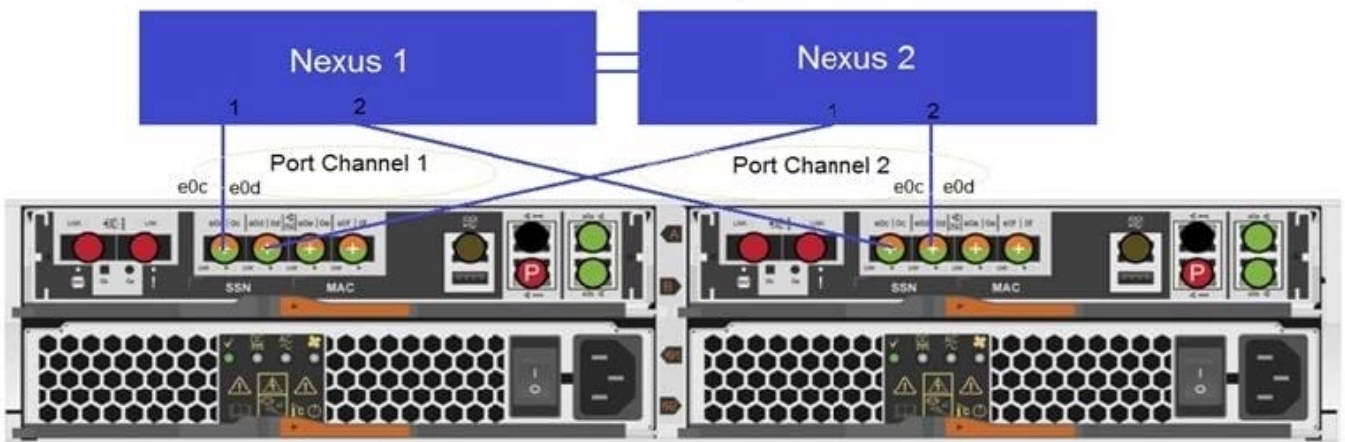
- B. The constituent is full
- C. The FlexGroup is offline
- D. The aggregate is full

Correct Answer: B

**QUESTION 6**

Click the Exhibit button.

**Correct Design Diagram**



**Current Connections**

```
cluster1::> network device-discovery show
```

Node/ Protocol	Local Port	Discovered Device	Interface	Platform
node1/cdp	e0c	Nexus1 (SS1142311PD)	tengigabitethernet1/1/1	N5K-C5010P-BF
	e0d	Nexus1 (SS1142311PD)	tengigabitethernet1/1/2	N5K-C5010P-BF
node2/cdp	e0c	Nexus2 (SS1142311KK)	tengigabitethernet2/1/2	N5K-C5010P-BF
	e0d	Nexus2 (SS1142311KK)	tengigabitethernet2/1/1	N5K-C5010P-BF

4 entries were displayed.

```
cluster1::> network port ifgrp show
```

Node	Port ifgrp	Distribution Function	MAC Address	Active Ports	Ports
node1	a0a	ip	b8:f3:7a:20:00	partial	e0c, e0d
node2	a0a	ip	07:25:60:02:00	partial	e0c, e0d

You configured LACP between a 2-node AFF 220 system and two Ethernet switches using multichassis Ether-channel for redundancy. You sent the network connection diagram in the exhibit to your network team to cable and configure the switch. You noticed partial connectivity on the AFF A220 for the interface groups.

Referring to the exhibit, which two statements are correct? (Choose two.)

- A. ONTAP does not have a multichassis Ether-channel feature.
- B. The network team forgot to verify the port channel members.
- C. 10 GbE ports are not supported with the AFF A220.
- D. The storage cabling to the switches is incorrect.

Correct Answer: AC

---

#### QUESTION 7

Your company is merging with another company. You are asked to set up your AFF A400 cluster to support two networks that have the same overlapping 192.168.1.0/24 subnet.

In this scenario, what must you create, to enable the same subnet with overlapping IPs on the same cluster? (Choose the best answer.)

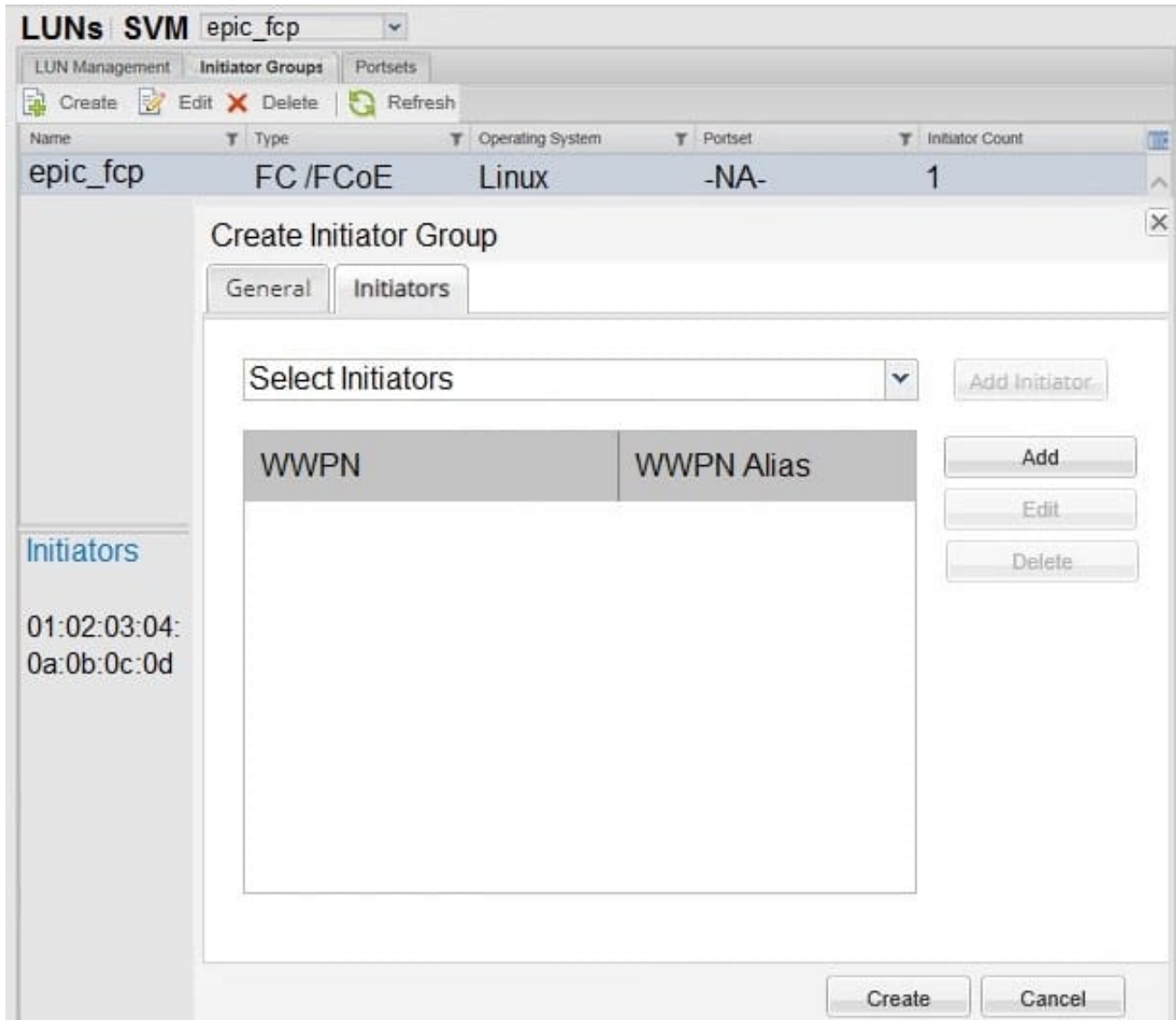
- A. broadcast domain
- B. IPspace
- C. subnet
- D. failover group

Correct Answer: B

---

#### QUESTION 8

Click the Exhibit button.



Referring to the exhibit, what are two reasons why no initiators are displayed in the initiators\ igroup screen? (Choose two.)

- A. Zoning on the switches has been done incorrectly.
- B. The server has not been powered up.
- C. ALUA has not been enabled on the NetApp controllers.
- D. SLM has not been enabled.

Correct Answer: AB

**QUESTION 9**

You want to improve the write performance of NL-SAS volumes serving data on your ONTAP. You also want to keep the performance consistent during a possible controller failover.

In this scenario, which feature do you use? (Choose the best answer.)

- A. Flash Cache
- B. Flash Pool
- C. FlexCache
- D. FabricPool

Correct Answer: A

**QUESTION 10**

Click the Exhibit button.

Platform Configuration: AFF A300 Single Chassis HA pair				
Port Address ▲	Description	Max Data Rate	Port Icon	Port Type
0a	Serial-Attached SCSI	SAS: 6/12 Gbps	SAS	MiniSAS HD
0b	Serial-Attached SCSI	SAS: 6/12 Gbps	SAS	MiniSAS HD
0c	Serial-Attached SCSI	SAS: 6/12 Gbps	SAS	MiniSAS HD
0d	Serial-Attached SCSI	SAS: 6/12 Gbps	SAS	MiniSAS HD
e0a	Ethernet	Ethernet: 10 Gbps	Ethernet	SFP+
e0b	Ethernet	Ethernet: 10 Gbps	Ethernet	SFP+
e0c	Ethernet	Ethernet: 1/10 Gbps	Ethernet	RJ45
e0d	Ethernet	Ethernet: 1/10 Gbps	Ethernet	RJ45
e0/0e <sup>[1]</sup>	Unified Target Adapter 2	Ethernet: 1/10 Gbps FC: 4/8/16 Gbps	Ethernet/Fibre Channel	SFP+



You want to add shelves to an AFF A300 HA pair that currently has six DS224C shelves already connected. You are using the onboard SAS port only, and you want to keep the multipath high availability (MPHA) configuration.

Referring to the exhibit, what is the maximum number of additional shelves allowed to be added in this configuration? (Choose the best answer.)

- A. 2
- B. 10
- C. 6



D. 4

Correct Answer: A

[NS0-161 VCE Dumps](#)

[NS0-161 Study Guide](#)

[NS0-161 Exam Questions](#)