

MD-100^{Q&As}

Windows Client

Pass Microsoft MD-100 Exam with 100% Guarantee

Free Download Real Questions & Answers **PDF** and **VCE** file from:

<https://www.certbus.com/md-100.html>

100% Passing Guarantee
100% Money Back Assurance

Following Questions and Answers are all new published by Microsoft
Official Exam Center

-  **Instant Download** After Purchase
-  **100% Money Back** Guarantee
-  **365 Days** Free Update
-  **800,000+** Satisfied Customers



QUESTION 1

SIMULATION

You have a computer named Computer1. Computer1 runs Windows 10 Pro.

You have a mobile device. You use Bluetooth to pair the mobile device to Computer1.

You want to enable dynamic lock on Computer1.

What should you do?

To complete this task, sign in to the required computer or computers.

A. See explanation below.

Correct Answer: A

On Computer1, select the Start button > Settings > Accounts > Sign-in options.

Under Dynamic lock, select the Allow Windows to automatically lock your device when you're away check box.

Reference:

<https://support.microsoft.com/en-za/help/4028111/windows-lock-your-windows-10-pc-automatically-when-you-step-away-from>

QUESTION 2

You need to sign in as LocalAdmin on Computer1. What should you do first?

A. From the LAPS UI tool, view the administrator account password for the computer object of Computer1.

B. From Windows Configuration Designer, create a configuration package that sets the password of the LocalAdmin account on Computer1.

C. Use a Group Policy object (GPO) to set the local administrator password.

D. From Microsoft Intune, set the password of the LocalAdmin account on Computer1.

Correct Answer: A

References: <https://technet.microsoft.com/en-us/mt227395.aspx>

QUESTION 3

Note: This question is part of a series of questions that present the same scenario. Each question in the series contains a unique solution that might meet the stated goals. Some question sets might have more than one correct solution, while

others might not have a correct solution.

After you answer a question in this section, you will NOT be able to return to it. As a result, these questions will not appear in the review screen.

You have a workgroup computer that runs Windows 10. The computer contains the local user accounts shown in the following table.

Name	Member of
Administrator	Administrators
User1	Administrators
User2	Users
User3	Users

You need to configure the desktop background for User1 and User2 only.

Solution: From the local computer policy, you configure the Filter Options settings for the computer policy.

Does this meet the goal?

- A. Yes
- B. No

Correct Answer: B

QUESTION 4

HOTSPOT

Your network contains an Active Directory domain. The domain contains the users shown in the following table.

Name	Member of domain group
User1	Authenticated Users
User2	Device Managers Authenticated Users
User3	Help Desk Authenticated Users

The Authenticated Users group has the Add workstations to domain user right in the Default Domain Controllers Policy.

The Device Managers and Help Desk groups are granted the Create Computer objects permission for the Computers container of the domain.

You have 15 workgroup computers that run Windows 10. Each computer contains a local user account named LocalAdmin1 that is a member of the following groups:

1.

Administrators

2.

Device Owners

3.

Authenticated Users

For each of the following statements, select Yes if the statement is true. Otherwise, select No.

NOTE: Each correct selection is worth one point.

Hot Area:

Answer Area

Statements	Yes	No
User1 can join all the computers to the domain.	<input type="radio"/>	<input type="radio"/>
User2 can join a maximum of 10 computers to the domain.	<input type="radio"/>	<input type="radio"/>
User3 can join all the computers to the domain.	<input type="radio"/>	<input type="radio"/>

Correct Answer:

Answer Area

Statements	Yes	No
User1 can join all the computers to the domain.	<input type="radio"/>	<input checked="" type="radio"/>
User2 can join a maximum of 10 computers to the domain.	<input type="radio"/>	<input checked="" type="radio"/>
User3 can join all the computers to the domain.	<input checked="" type="radio"/>	<input type="radio"/>

Box 1: No

User1 is a member of the Authenticated Users group which has the Add workstations to domain user right. However, with the Add workstations to domain user right, you are restricted to joining a maximum of 10 computers to the domain.

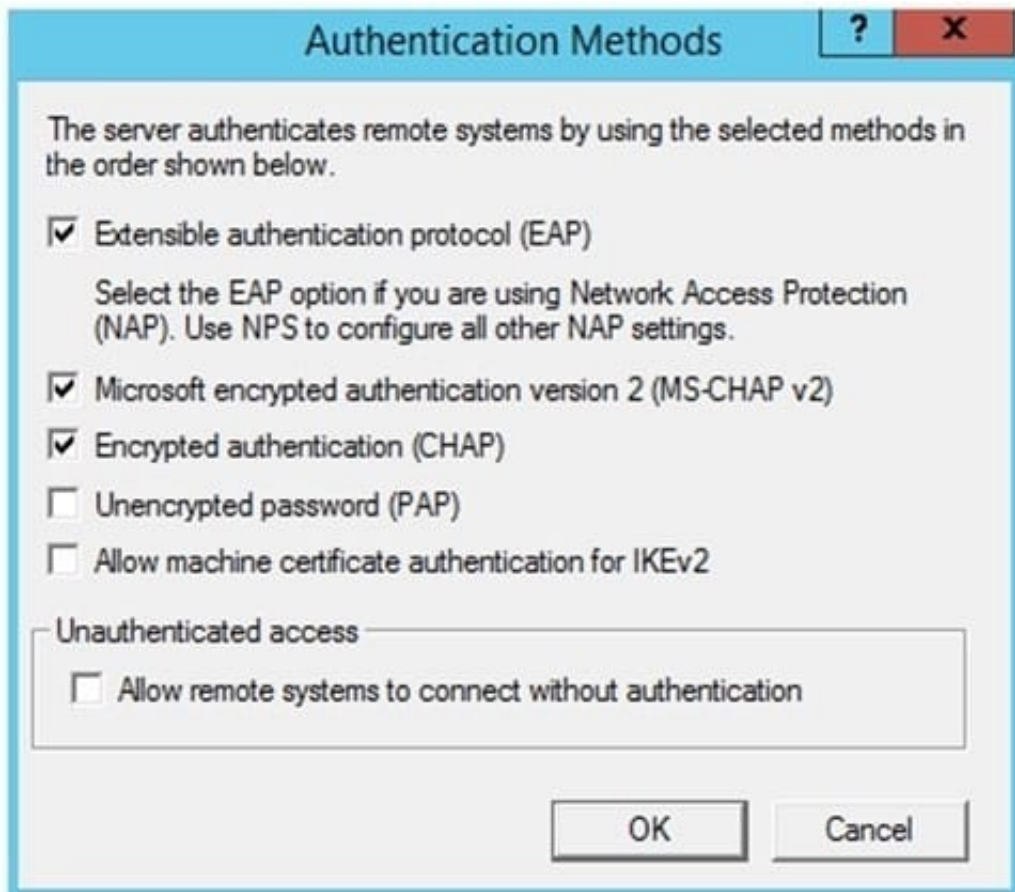
Box 2: No

User2 is a member of the Authenticated Users group which has the Add workstations to domain user right. User2 is also a member of the Device Managers group which is granted the Create Computer objects permission for the Computers container of the domain. The Create Computer objects permission overrides the 10-computer limit imposed by the Add workstations to domain user right so User2 can join more than 10 computers to the domain.

Box 3. Yes User3 is a member of the Authenticated Users group which has the Add workstations to domain user right. User3 is also a member of the Help Desk group which is granted the Create Computer objects permission for the Computers container of the domain. The Create Computer objects permission overrides the 10-computer limit imposed by the Add workstations to domain user right so User3 can join all the computers to the domain.

QUESTION 5

You have a VPN server that accepts PPTP and L2TP connections and is configured as shown in the following exhibit.



A user named User1 has a computer that runs Windows 10 and has a VPN connection configured as shown in the following exhibit.

```
Administrator: Windows PowerShell
PS C:\> Get-VpnConnection

Name                : Contoso VPN
ServerAddress       : 192.168.1.2
AllUserConnection  : False
Guid                : {3022F8FC - 5222 - 4288 - 8A80 - 7AFB21D11366}
TunnelType          : Automatic
AuthenticationMethod : {MsChapv2}
EncryptionLevel     : Optional
L2tpIPsecAuth       : Certificate
UseWinLogonCredential : False
EapConfigXmlStream :
ConnectionStatus    : Disconnected
RememberCredential  : True
SplitTunneling      : False
DnsSuffix            :
IdleDisconnectSeconds : 0

PS C:\>
```

User1 fails to establish a VPN connection when connected to a home network. You need to identify which VPN client setting must be modified. What should you identify?

- A. ServerAddress
- B. TunnelType
- C. AuthenticationMethod
- D. L2tpIPsecAuth
- E. EncryptionLevel

Correct Answer: A

The server address is a private IP address. This needs to be the public IP address of the VPN server.

QUESTION 6

Your company is not connected to the internet. The company purchases several new computers with Windows 10 Pro for its users.

None of the new computers are activated.

You need to activate the computers without connecting the network to the Internet.

What should you do?

- A. Make use of the Volume Activation Management Tool (VAMT).

- B. Make use of the Key Management Service (KMS).
- C. Make use of the Windows Process Activation Service.
- D. Run the Get-WmiObject-query cmdlet.

Correct Answer: B

You can configure one of the computers as a Key Management Service (KMS) host and activate the KMS host by phone. The other computers in the isolated network can then activate using the KMS host.

Installing a KMS host key on a computer running Windows 10 allows you to activate other computers running Windows 10 against this KMS host and earlier versions of the client operating system, such as Windows 8.1 or Windows 7. Clients locate the KMS server by using resource records in DNS, so some configuration of DNS may be required. This scenario can be beneficial if your organization uses volume activation for clients and MAK-based activation for a smaller number of servers. To enable KMS functionality, a KMS key is installed on a KMS host; then, the host is activated over the Internet or by phone using Microsoft's activation services.

Reference: <https://docs.microsoft.com/en-us/windows/deployment/volume-activation/activate-using-key-management-service-vamt>

QUESTION 7

HOTSPOT

You need to create a virtual machines shown in the following table:

Name	Operating system	Requirement
VM1	64-bit version of Windows 8.1 Pro	Start from a floppy disk.
VM2	32-bit version of Windows 10 Pro	Start from the network.
VM3	64-bit version of Windows 10 Pro	Start from an SCSI VHD.

Which generations should you use for each virtual machine? To answer, select the appropriate options in the answer area. NOTE: Each correct selection is worth one point.

Hot Area:

VM1:
Generation 1 only
Generation 2 only
Generation 1 or generation 2

VM2:
Generation 1 only
Generation 2 only
Generation 1 or generation 2

VM3:
Generation 1 only
Generation 2 only
Generation 1 or generation 2

Correct Answer:

VM1:
Generation 1 only
Generation 2 only
Generation 1 or generation 2

VM2:
Generation 1 only
Generation 2 only
Generation 1 or generation 2

VM3:
Generation 1 only
Generation 2 only
Generation 1 or generation 2

QUESTION 8

Which users can sign in to Computer2 by using Remote Desktop?

- A. User2 only

- B. Admin1 only
- C. User1 only
- D. Admin1 and User2 only
- E. Admin1, User1, User2, and User3

Correct Answer: D

Reference: <https://4sysops.com/archives/user-rights-assignment-in-windows-server-2016/>

QUESTION 9

You have a computer that runs Windows 10.

The computer fails to start, and you receive the following error message: "BOOTMGR image is corrupt. The system cannot boot".

You need to repair the system partition.

Which command should you run from Windows Recovery Environment (WinRE)?

- A. fdisk.exe
- B. chkdsk.exe
- C. diskpart.exe
- D. bcdboot.exe

Correct Answer: C

DiskPart, which has replaced fdisk, is a command-line utility that provides the ability to manage disks, partitions or volumes in your computer running all versions of operating system since Windows 2000.

References: <https://www.diskpart.com/windows-10/diskpart-windows-10-1203.html>

QUESTION 10

HOTSPOT

Your network contains an Active Directory domain named adatum.com. The domain contains two computers named Computer1 and Computer2 that run Windows 10.

The domain contains the user accounts shown in the following table.

Name	Member of
User1	Domain Admins
User2	Domain Users
User3	Domain Users

Computer2 contains the local groups shown in the following table.

Name	Members
Group1	ADATUM\User2 ADATUM\User3
Group2	ADATUM\User2
Group3	ADATUM\User3
Administrators	ADATUM\Domain Admins ADATUM\User3
Remote Desktop Users	Group1

The relevant user rights assignments for Computer2 are shown in the following table.

Policy	Security Setting
Allow log on through Remote Desktop Services	Administrators, Remote Desktop Users
Deny log on through Remote Desktop Services	Group2
Deny log on locally	Group3

For each of the following statements, select Yes if the statement is true. Otherwise, select No.

NOTE: Each correct selection is worth one point.

Hot Area:

Statements	Yes	No
User1 can establish a Remote Desktop session to Computer2.	<input type="radio"/>	<input type="radio"/>
User2 can establish a Remote Desktop session to Computer2.	<input type="radio"/>	<input type="radio"/>
User3 can establish a Remote Desktop session to Computer2.	<input type="radio"/>	<input type="radio"/>

Correct Answer:

Statements	Yes	No
User1 can establish a Remote Desktop session to Computer2.	<input checked="" type="radio"/>	<input type="radio"/>
User2 can establish a Remote Desktop session to Computer2.	<input type="radio"/>	<input checked="" type="radio"/>
User3 can establish a Remote Desktop session to Computer2.	<input checked="" type="radio"/>	<input type="radio"/>

Box 1: Yes

User1 is an administrator and has the Allow log on through Remote Desktop Services.

Box 2: No

User2 is a member of Group2 which has the Deny log on through Remote Desktop Services.

Box 3: Yes

User3 is a member of the administrators group and has the Allow log on through Remote Desktop Services.

Note: Deny permissions take precedence over Allow permissions. If a user belongs to two groups, and one of them has a specific permission set to Deny, that user is not able to perform tasks that require that permission even if they belong to

a group that has that permission set to Allow.

References:

<https://docs.microsoft.com/en-us/azure/devops/organizations/security/about-permissions?view=azure-devops&tabs=preview-page%2Ccurrent-page>

QUESTION 11

HOTSPOT

You have two workgroup computers named Computer1 and Computer2 that run Windows 10. The Guest account is enabled on both computers.

The computers contain the users shown in the following table.

Computer name	User name	User password
Computer1	User1	P@ssword1
Computer1	User2	P@ssword2
Computer2	User1	P@ssword1
Computer2	User2	P@ssword2
Computer2	User3	P@ssword3

The computers contain the shared folders shown in the following table.

Computer name	Shared folder name	Permission
Computer1	Share1	Everyone – Read
Computer2	Share2	Everyone – Read

Computer1 has password-protected sharing turned on. Computer2 has password-protected sharing turned off.

For each of the following statements, select Yes if the statement is true. Otherwise, select No.

NOTE: Each correct selection is worth one point.

Hot Area:

Answer Area

Statements	Yes	No
From Computer1, User1 can access Share2.	<input type="checkbox"/>	<input type="checkbox"/>
From Computer2, User2 can access Share1.	<input type="checkbox"/>	<input type="checkbox"/>
From Computer2, User3 can access Share1.	<input type="checkbox"/>	<input type="checkbox"/>

Correct Answer:

Answer Area

Statements	Yes	No
From Computer1, User1 can access Share2.	<input checked="" type="checkbox"/>	<input type="checkbox"/>
From Computer2, User2 can access Share1.	<input checked="" type="checkbox"/>	<input type="checkbox"/>
From Computer2, User3 can access Share1.	<input checked="" type="checkbox"/>	<input type="checkbox"/>

When password protected sharing is turned on, only people who have a user account and password on your computer can access shared files.

Box 1: Yes

Password protected sharing is turned off on Computer2 so User1 can access Share2 from Computer1.

Box 2: Yes

Password protected sharing is turned on on Computer1. User2 has an account on Computer1 so User2 can access Share1 from Computer2.

Box 3: Yes

The answer to this question depends on which version of Windows 10 is running on the computers. This isn't specified in the question so it's likely that the question will be updated in future.

Password protected sharing is turned on on Computer1. User3 does not have an account on Computer1 so User3 cannot access Share1 from Computer2. However, the Guest account is enabled which could provide access depending

on

which version of Windows 10 is running. If it is Windows 10 Home or Pro, then the answer to this question is Yes. The Guest account does provide access. However, in later versions of Windows 10 Enterprise and Windows 10 Education (from build 1709 onwards), the Guest account does not enable access to the shared folder.

Reference:

<https://docs.microsoft.com/en-us/troubleshoot/windows-server/networking/guest-access-in-smb2-is-disabled-by-default>

QUESTION 12

Note: This question is part of a series of questions that present the same scenario. Each question in the series contains a unique solution that might meet the stated goals. Some question sets might have more than one correct solution, while

others might not have a correct solution.

After you answer a question in this section, you will NOT be able to return to it. As a result, these questions will not appear in the review screen.

Your network contains an Active Directory domain. The domain contains a computer named Computer1 that runs Windows 8.1.

Computer1 has apps that are compatible with Windows 10.

You need to perform a Windows 10 in-place upgrade on Computer1.

Solution: You add Windows 10 startup and install images to a Windows Deployment Services (WDS) server. You start Computer1 by using WDS and PXE, and then you initiate the Windows 10 installation.

Does this meet the goal?

A. Yes

B. No

Correct Answer: B

Use Microsoft Deployment Toolkit (MDT) instead.

QUESTION 13

You have a Windows 11 Pro device.

You need to perform a scan in Microsoft Defender to check for rootkits.

Which type of scan should you use?

A. full

B. offline

C. custom

D. quick

Correct Answer: B

What if I think I have a rootkit on my device?

Microsoft security software includes many technologies designed specifically to remove rootkits. If you think you have a rootkit, you might need an extra tool that helps you boot to a known trusted environment.

Microsoft Defender Offline can be launched from the Windows Security app and has the latest antimalware updates from Microsoft. It's designed to be used on devices that aren't working correctly because of a possible malware infection.

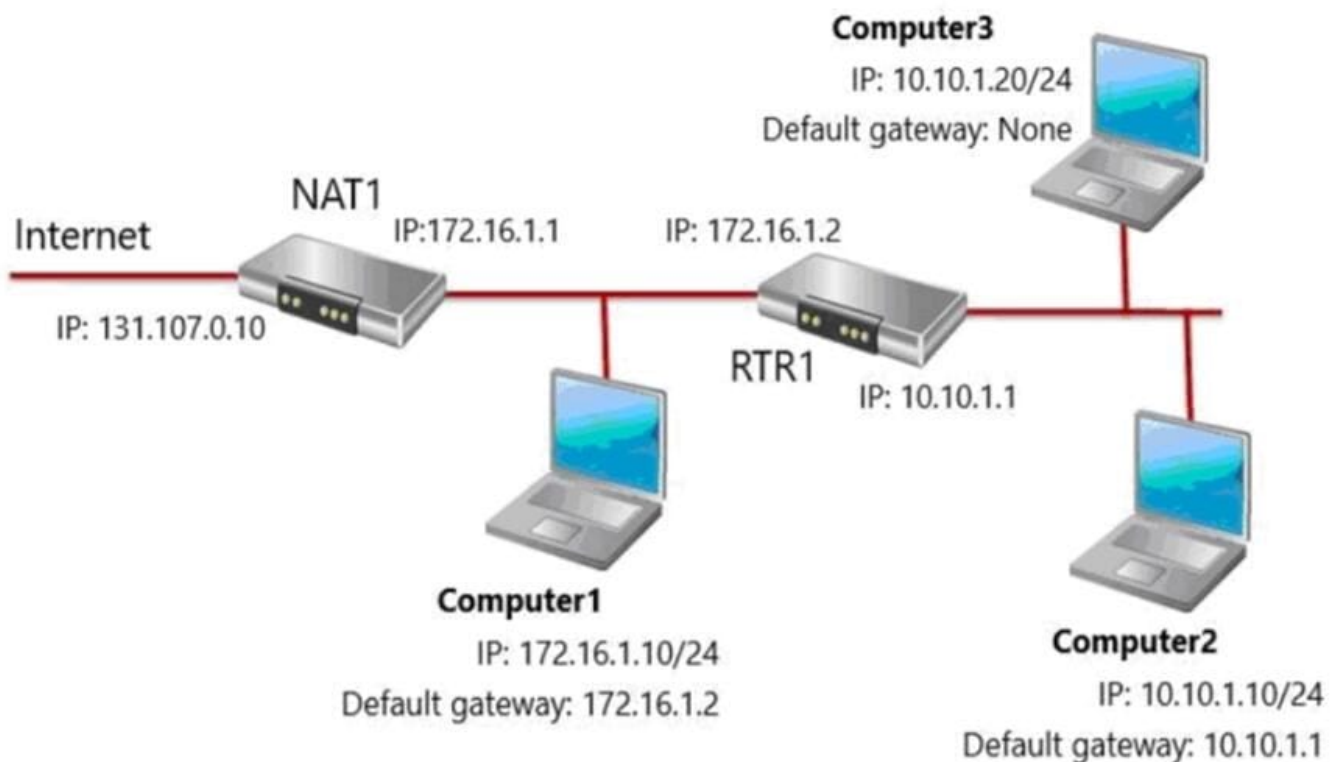
Reference:

<https://learn.microsoft.com/en-us/microsoft-365/security/intelligence/rootkits-malware>

QUESTION 14

HOTSPOT

You have the network shown in the following exhibit.



Computer1, Computer2, and Computer3 run Windows 10. Windows Defender Firewall is configured to allow ICMP traffic.

RTR1 is a router.

For each of the following statements, select Yes if the statement is true. Otherwise, select No.

NOTE: Each correct selection is worth one point.

Hot Area:

Statements	Yes	No
If Computer1 pings the IP address of Computer2, Computer1 will receive a reply.	<input type="radio"/>	<input type="radio"/>
If Computer1 pings the IP address of Computer3, Computer1 will receive a reply.	<input type="radio"/>	<input type="radio"/>
If Computer2 pings the IP address of Computer3, Computer2 will receive a reply.	<input type="radio"/>	<input type="radio"/>

Correct Answer:

Statements	Yes	No
If Computer1 pings the IP address of Computer2, Computer1 will receive a reply.	<input checked="" type="radio"/>	<input type="radio"/>
If Computer1 pings the IP address of Computer3, Computer1 will receive a reply.	<input checked="" type="radio"/>	<input type="radio"/>
If Computer2 pings the IP address of Computer3, Computer2 will receive a reply.	<input type="radio"/>	<input checked="" type="radio"/>

Box 1: Yes

Through RTR1 which has been configured as the default gateway for Comptuer1.

Box 2: Yes

Through RTR1 which has been configured as the default gateway for Comptuer1.

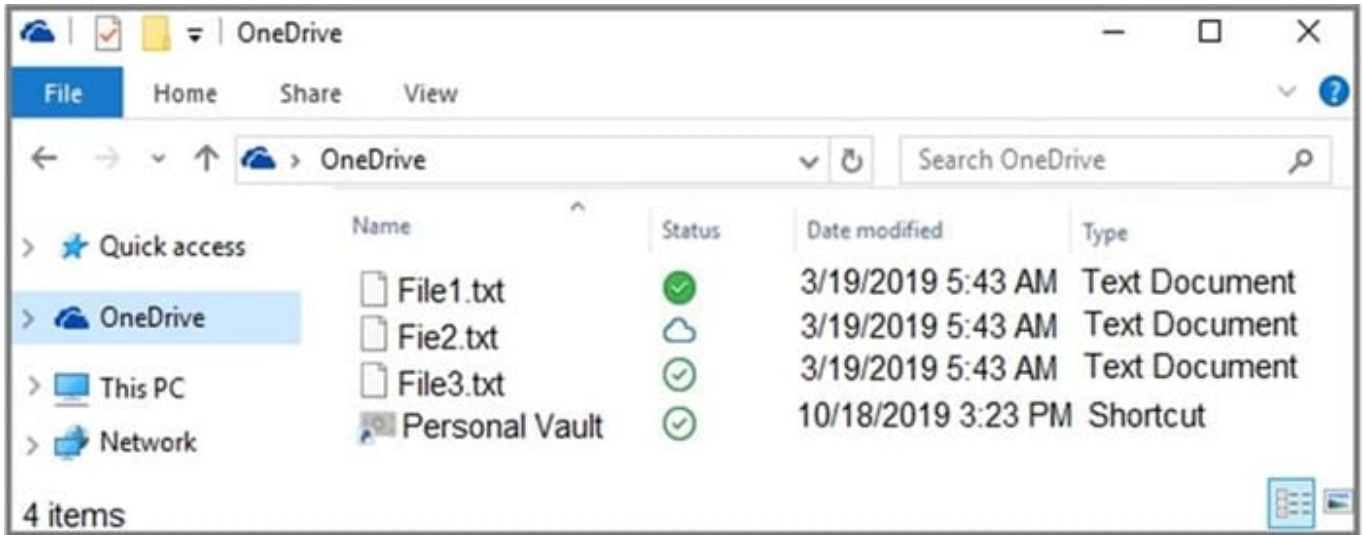
Box 3: No

Computer3 has not been configured with a default gateway.

QUESTION 15

HOTSPOT

You have a workgroup computer named Computer1 that runs Windows 10. From File Explorer, you open OneDrive as shown in the following exhibit.



Use the drop-down menus to select the answer choice that answers each question based on the information presented on the graphic. NOTE: Each correct selection is worth one point.

Hot Area:

Answer Area

If Computer1 fails, which files will you be able to recover from Microsoft OneDrive?

▼

- File2.txt only
- File1.txt and File2.txt only
- File2.txt and File3.txt only
- File1.txt, File2.txt, and File3.txt

If the network adapter on Computer1 fails, which files will you be able to access on Computer1?

▼

- File1.txt only
- File1.txt and File2.txt only
- File1.txt and File3.txt only
- File1.txt, File2.txt, and File3.txt

Correct Answer:

Answer Area

If Computer1 fails, which files will you be able to recover from Microsoft OneDrive?

	▼
File2.txt only	
File1.txt and File2.txt only	
File2.txt and File3.txt only	
File1.txt, File2.txt, and File3.txt	

If the network adapter on Computer1 fails, which files will you be able to access on Computer1?

	▼
File1.txt only	
File1.txt and File2.txt only	
File1.txt and File3.txt only	
File1.txt, File2.txt, and File3.txt	

[Latest MD-100 Dumps](#)

[MD-100 VCE Dumps](#)

[MD-100 Braindumps](#)