

JPR-934^{Q&As}

Security, Expert (JNCIE-SEC)

Pass Juniper JPR-934 Exam with 100% Guarantee

Free Download Real Questions & Answers **PDF** and **VCE** file from:

<https://www.certbus.com/jpr-934.html>

100% Passing Guarantee
100% Money Back Assurance

Following Questions and Answers are all new published by Juniper
Official Exam Center

- ⚙️ **Instant Download** After Purchase
- ⚙️ **100% Money Back** Guarantee
- ⚙️ **365 Days** Free Update
- ⚙️ **800,000+** Satisfied Customers



QUESTION 1

You want to use the RSoP tool in logging mode to build some reports on the existing policy settings of one of your client computers. You have used RSoP before in planning mode, but never in logging mode. You open the RSoP Wizard from the Active Directory Users and Computers console, as you've done before, but you notice that there is no mechanism for selecting the mode, and only planning mode seems to be available. What is the problem?

- A. The RSoP Wizard runs only in planning mode.
- B. You should open the RSoP Wizard from Active Directory Sites and Services instead.
- C. You should open the RSoP Wizard from the RSoP MMC instead.
- D. You can select logging mode when you open the RSoP in Active Directory Users and Computers. You must have overlooked the option.

Correct Answer: C

QUESTION 2

The ABC.com network consists of a single Active Directory domain named ABC.com.

You deploy an enterprise certification authority (CA) on a Windows Server computer named ABC-CA1. The primary purpose of the CA is issue company users with digital certificates to enable them to authenticate with the new company Intranet website. You create a new certificate template named Web Authentication. You enable the Web Authentication certificate template on ABC-CA1 and configure the default domain group policy so that users who log on to the domain receive a Web

Authentication certificate.

The following morning users complain that they do not have certificates which can be used to authenticate to the Intranet Web site.

How can you ensure the users are issued with a certificate?

- A. By configuring ABC-CA1 to be an Enterprise Subordinate CA of a public CA such as Verisign.
- B. By modifying the permissions of the Web Authentication certificate template to give the Domain Users group the Allow – Autoenroll permission.
- C. By adding your Domain Admin user account to the Cert Managers group in Active Directory.
- D. By configuring the Default Domain Controllers GPO to assign the certificates to users when they log on.

Correct Answer: B

QUESTION 3

You work as the network administrator at ABC.com. The ABC.com network consists of a domain named ABC.com.

ABC.com has several subsidiary companies whose Web sites and DNS zones are hosted on servers at ABC.com.

What actions must you take to allow the DNS server at ABC.com to generate a report of the listed zones on a weekly basis?

- A. You need to utilize the ipconfig/registerdns.
- B. You need to NetMon utility on the DNS server.
- C. You need to utilize the dnscmd utility on the DNS server.
- D. You need to utilize the ADSIEdit utility on the DNS server.

Correct Answer: C

QUESTION 4

You are a consultant. You have been called in to troubleshoot a malfunctioning NLB cluster that is supposed to serve Web pages with IIS. The cluster contains four hosts, but only one host at a time will successfully form the cluster. Clients appear to have no problems connecting to any of the single-host cluster configurations. What is the most likely cause of the problem?

- A. The hosts are configured with duplicate priorities.
- B. The hosts are configured with different port rules.
- C. The hosts are configured with different cluster IP addresses.
- D. The hosts are configured with duplicate cluster IP addresses.

Correct Answer: A

QUESTION 5

You work as a network administrator for ABC.com. The ABC.com network consists of a single Active Directory domain named ABC.com. There are currently 120 Web servers running Windows Server and are contained in an Organizational Unit (OU) named ABC_WebServers

ABC.com management took a decision to uABCrade all Web servers to Windows Server. You disable all services on the Web servers that are not required. After running the IIS Lockdown Wizard on a recently deployed web server, you discover that services such as NNTP that are not required are still enabled on the Web server.

How can you ensure that the services that are not required are forever disabled on the Web servers without affecting the other servers on the network? (Choose two.)

- A. Set up a GPO that will change the startup type for the services to Automatic.
- B. By linking the GPO to the ABC_WebServers OU.
- C. Set up a GPO with the Hisecws.inf security template imported into the GPO.
- D. By linking the GPO to the domain.
- E. Set up a GPO in order to set the startup type of the redundant services to Disabled.

F. By linking the GPO to the Domain Controllers OU.

G. Set up a GPO in order to apply a startup script to stop the redundant services.

Correct Answer: BE

QUESTION 6

You have recently hired a new junior administrator to assist you in running the network for a medium-sized manufacturing company. You are explaining to your new assistant that AD objects are assigned security descriptors to allow you to implement access control. You tell your assistant that the security descriptor contains several different components. Which of the following are contained in the security descriptor for an object? (Select all that apply.)

- A. Discretionary access control list
- B. System access control list
- C. Dynamic access control list
- D. Ownership information

Correct Answer: ABD

QUESTION 7

You are the network administrator for your company's network. The network consists of two Active Directory domains: lmiweb.com and hr.lmiweb.com. The lmiweb.com domain supports most of the company's user accounts and resources.

The hr.lmiweb.com domain contains the user accounts and resources for the company's human resources department.

The company has deployed an extensive 802.11b wireless network. Access points (APs) have been deployed throughout the company to provide users in all departments with wireless connectivity and serve as bridges to the wired LAN. A

total of 325 users, including all members of hr.lmiweb.com, have been issued laptops with 802.11b compliant network adapters. No other computers have wireless connectivity. All wireless LANs have Wired Equivalent Privacy (WEP) enabled

to secure these communications.

Human resources users work throughout the company providing employee training and informational seminars. These users require access to the wireless LAN in all company locations. You must ensure that all human resources data is as

secure as possible as it is transmitted across the wireless LAN. Only users with accounts in only specific users/computers groups should be able to access the human resources division's wireless LAN. In addition, users without accounts in

this domain should not be able to view or select the LAN from their list of available networks.

What should you do? Each correct answer presents part of the solution. (Choose three.)

- A. Configure MAC filtering on each department's wireless LAN.
- B. Configure MAC filtering on the human resources wireless LAN.
- C. Enable Service Set Identifier (SSID) broadcasting on each department's access point.
- D. Configure a unique Service Set Identifier (SSID) for each department's wireless LAN.
- E. Configure a unique Service Set Identifier (SSID) for the human resources wireless LAN.
- F. Enable Service Set Identifier (SSID) broadcasting on all the human resources access points.
- G. Disable Service Set Identifier (SSID) broadcasting on all the human resources access points.

Correct Answer: BEG

QUESTION 8

The ABC.com network consists of a single Active Directory domain named ABC.com. All servers on the ABC.com network run Windows Server.

ABC.com contains a member server named ABC-SR24. ABC-SR24 is configured as a File and Print server and hosts shared folders for all ABC.com users.

One morning a ABC.com user named Dean Austin complains that ABC-SR24 responds poorly at various times throughout the day. You suspect that the poor performance is caused by broadcast traffic on the ABC.com network.

What would be the best way to monitor ABC-SR24 while minimizing administrative effort?

- A. Use System Monitor to monitor the Datagrams/sec counter in the UDPv4 object.
- B. Double click on the Local Area Connection and view the status of the network connection.
- C. Open Task Manager and monitor the Networking tab.
- D. Configure an alert in Performance Monitor to send you an alert when the Datagrams/sec counter in the UDPv4 object is high.

Correct Answer: D

QUESTION 9

You work as a Network Administrator for ABC.com. The company has a Windows Active Directory-based single domain single forest network. The functional level of the forest is Windows Server. An intranet-based Web site is required to be

installed on the network. Two servers are available for installing the application. You are required to accomplish the following tasks:

The Web site should be available all the time for the clients.

Both servers should be capable of fulfilling the clients' requests at a time.

You take the following steps:

Create a two-node server cluster.

Configure one server as an active server and the other as a passive server.

Which of the required tasks will be accomplished by taking these steps?

- A. Both servers will be capable of fulfilling the clients\' requests at a time.
- B. None of the tasks will be accomplished.
- C. The Web site will be available all the time for the clients.
- D. Both tasks will be accomplished.

Correct Answer: C

QUESTION 10

You are the backup administrator for your company. You are responsible for ensuring that all data on ten files servers are protected against data loss. Normal business hours from 8 A.M. to 5 P.M., Monday through Friday, are observed.

Network access is prohibited outside normal business hours.

A member server named File1 contains shared folder accessed by users in the sales department. The disk structure of File1 is shown in the following exhibit:

Volume	Hosts	Disk Size	Available Space
C	System and Boot Files	9 GB	2.54 GB
D	Shared Folders and User Profiles	25 GB	9.8 GB
F	Shared Folders	75 GB	53.35 GB

You have scheduled a daily backup of File1 as shown in the exhibit. (Click the Exhibit(s) button.) Users in the Sales department frequently leave documents open on their desktops when they leave work. These users occasionally request that

you restore a previous version of a file from backup. However, some of these files are not included in recent backup sets. You must modify the backup procedures for File1 so that all files, including open documents, will be included in the daily

backup. You also want to provide users with the ability to restore their files.

What should you do? (Choose all that apply. Each correct answer presents part of the solution.)

- A. Move all shared user data folders from drive D to drive F.
- B. Move all shared folders user data from drive F to drive D.
- C. Enable Shadow Copies of Shared Folders on drive F.
- D. Enable Volume shadow copy for the scheduled backup job.

- E. Select the Disable volume shadow copy option for the scheduled backup job.
- F. Install the Previous Versions Client software on all Sales department computers.
- G. Create a new daily backup job by using the same settings, but clear the Disable volume shadow copy option.

Correct Answer: ACFG

QUESTION 11

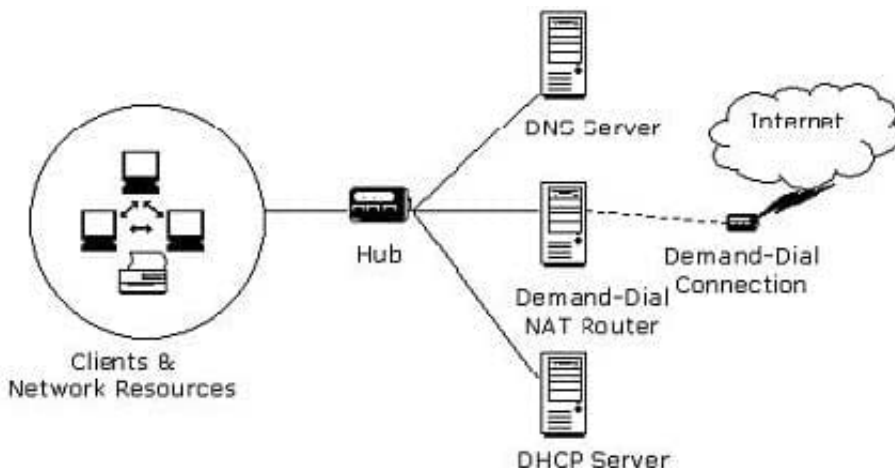
You are using Network Monitor to analyze IPSec packets that are using ESP. The data packet section is not viewable. What must you do to properly view the data packet section of the frames?

- A. Set ESP to use the same encryption policy as the Network Monitor machine.
- B. Disable AH policies.
- C. Install the ESP filter DLL and update the parser.ini file.
- D. Configure the ESP policy to use null encryption.

Correct Answer: D

QUESTION 12

You work as a Network Administrator for Venus ABC.com. The company has a Windows Active Directory-based single domain single forest network. The functional level of the forest is Windows Server. The company wants to expand its network. The clients on the network require Internet connectivity through the router. You plan to install NAT for this purpose. The network plan of the company is shown in the image below:



As the number of clients is quite high, a Class A private network range is required. Which of the following is the correct Class A network address range that is set aside for private use and barred from routing over the network?

- A. 10.0.0.0 to 10.255.255.255

- B. 172.16.0.0 to 172.31.255.255
- C. 192.168.0.0 to 192.168.255.255
- D. 111.0.0.0 to 111.255.255.255

Correct Answer: A

QUESTION 13

The ABC.com network consists of a single Active Directory domain named ABC.com. All servers on the ABC.com network run Windows Server.

ABC.com has a main office in Chicago and a branch office in Miami. The two offices are configured as Active Directory sites and are connected by a 56Kbps WAN link which is available only during office hours.

The Miami site contains a domain controller named ABC-DC02.

A ABC.com user named Andy Reid works in the Miami office. One morning Andy Reid complains that the response times on the WAN link is slow. You then investigate the problem and discover that the problem is due to Active Directory

replication activity.

How can you reduce the traffic going over the WAN connection?

- A. By moving the computer object for ABC-DC02 to the Active Directory site for the Chicago office.
- B. By configuring ABC-DC02 as a DNS server.
- C. By having the replication interval decreased on the site link between the two sites.
- D. By having the replication interval increased on the site link between the two sites.
- E. By removing the Global Catalog from ABC-DC02 and enabling universal group membership in the Miami office.

Correct Answer: D

QUESTION 14

You are the server administrator for SRV05 which is a Windows Server Standard Edition file server in your domain. Your backup strategy utilizes one full backup and then daily differential backups. SRV05 has eight 72GB SCSI3 10,000RPM

drives in an external drive array for data and are set up using hardware RAID 5. SRV05 also has two additional 72GB SCSI3 10,000RPM drives internal to the system and they are configured in a RAID 1 arrangement. This volume holds the

system and boot partitions for the server's operating systems and a small amount of local application data.

The full back up is performed each Saturday at 9:00PM EST. The full back up takes 2 hours. The daily differential backups are performed each day at 9:00PM, Monday through Friday. There is no full backup nor differential backup performed

on Sunday. The amount of time needed for the differential backups varies but it is never less than 20 minutes and the maximum time never exceeds 75 minutes.

DNS07 has a hard disk failure in the external array at approximately 6:00PM on a Saturday. At 7:20PM a second drive in the external array also fails. What needs to be done to bring the server back to working order so that users can access

the data on the server?

Select the best answer.

- A. The failed drives need to be replaced and the data needs to be restored from the full backup.
- B. The failed drives need to be replaced and the data needs to be restored from the full backup and all of the differential backups.
- C. The failed drives need to be replaced. Nothing additional needs to be done because the RAID configuration allows the system to continue to run.
- D. The failed drives need to be replaced and the data needs to be restored from the full backup and the last differential backup.

Correct Answer: D

QUESTION 15

The ABC.com network consists of a single Active Directory domain named ABC.com. ABC.com has its headquarters in Chicago and several branch offices at various locations throughout the country. All servers on the ABC.com network run Windows Server.

You are in the process of configuring a VPN connection between the Chicago office and a branch office in Dallas using Windows Server computers running Routing and Remote Access (RRAS).

A ABC.com written security policy states that the requirements below must be met:

Data transmitted over the VPN must be encrypted with end to end encryption.

The VPN connection authentication should be at the computer level rather than at user level and with no credential information transmitted over the internet.

How should you configure the VPN? (Choose two.)

- A. Use a PPTP connection.
- B. Use EAP-TLS authentication.
- C. Use a PPP connection.
- D. Use MS-CHAP v2 authentication.
- E. Use MS-CHAP authentication.
- F. Use PAP authentication.
- G. Use an L2TP/IPSec connection.

Correct Answer: BG

[JPR-934 Practice Test](#)

[JPR-934 Study Guide](#)

[JPR-934 Braindumps](#)