

JN0-681^{Q&As}

New Data Center, Professional

Pass Juniper JN0-681 Exam with 100% Guarantee

Free Download Real Questions & Answers **PDF** and **VCE** file from:

<https://www.certbus.com/jn0-681.html>

100% Passing Guarantee
100% Money Back Assurance

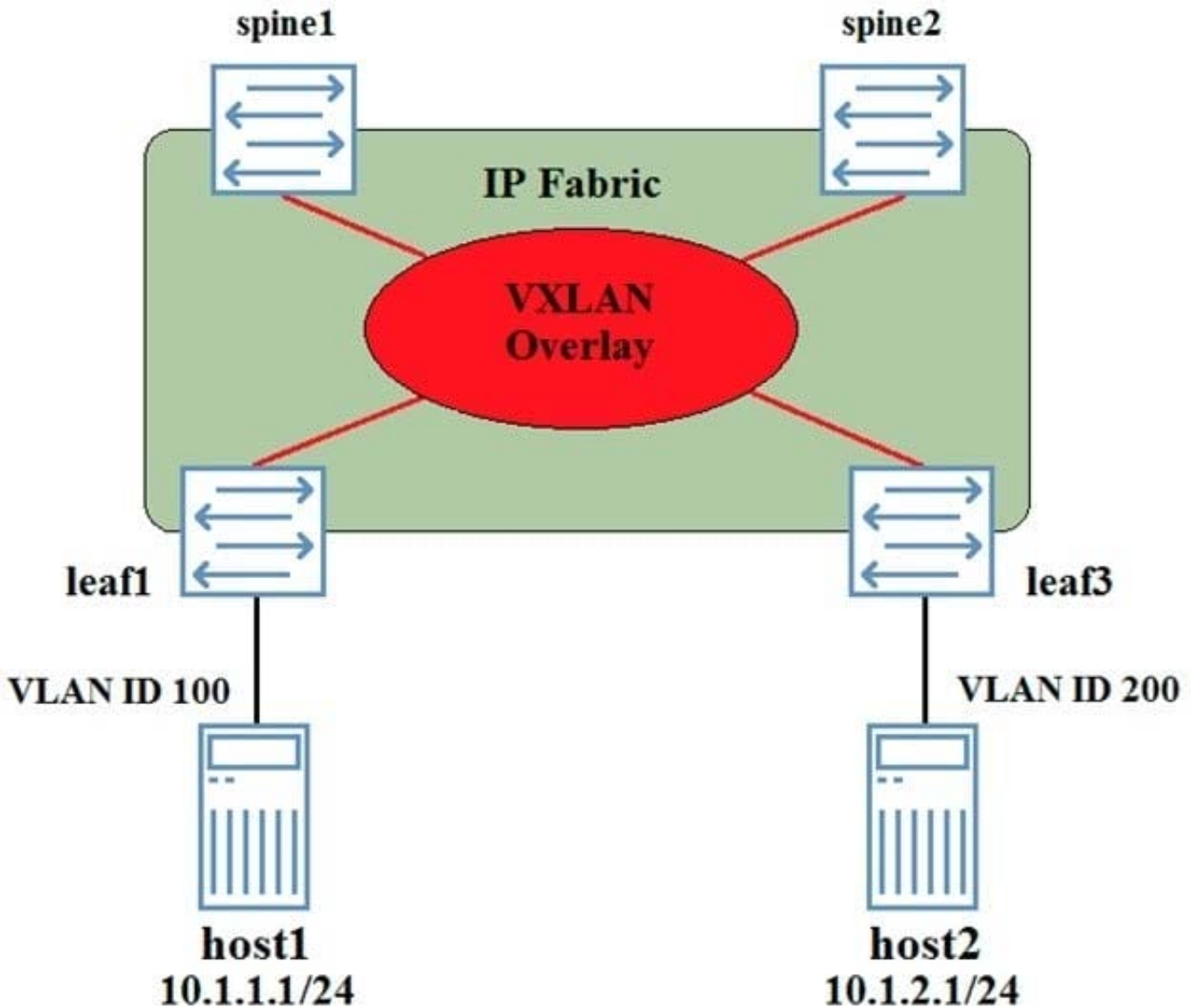
Following Questions and Answers are all new published by Juniper
Official Exam Center

- ⚙️ **Instant Download** After Purchase
- ⚙️ **100% Money Back** Guarantee
- ⚙️ **365 Days** Free Update
- ⚙️ **800,000+** Satisfied Customers



QUESTION 1

You have deployed a VXLAN as shown in the exhibit Leaf1, leaf3, spine1, and spine2 have been configured as VTEPs. Host1 cannot communicate with host2.



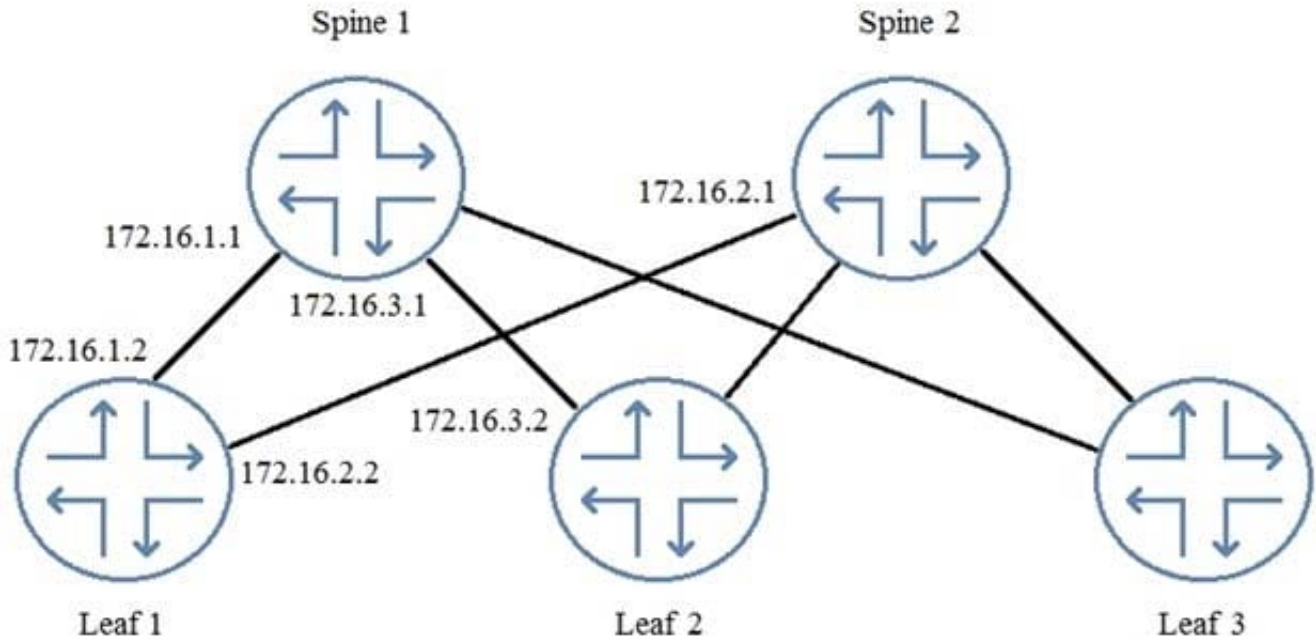
Referring to the exhibit, how would you solve this problem?

- A. The VLAN ID on the link connected to host2 must be changed to VLAN 100.
- B. A DCI connection must be created between the VLANs.
- C. A Layer 3 VXLAN gateway must be configured on at least one of the devices.
- D. Host1 and host2 must be placed in the same VRF.

Correct Answer: C

QUESTION 2

You are logged in to Leaf 1. When examining the routing table, you notice that you have no routes from Leaf 2.



Referring to the exhibit, which two commands would you use to troubleshoot the problem? (Choose two.)

- A. From Leaf 2, issue the show route advertising-protocol bgp 172.16.1.2 command.
- B. From Spine 1, issue the show route advertising-protocol bgp 172.16.1.1 command.
- C. From Spine 1, issue the show route advertising-protocol bgp 172.16.1.2 command.
- D. From Leaf 1, issue the show route receive-protocol bgp 172.16.1.1 command.

Correct Answer: CD

QUESTION 3

You are asked to deploy 20 QFX Series devices using ZTP. Each QFX5100 requires a specific FTP server.

In this scenario, which two components must you configure on the DHCP server? (Choose two.)

- A. the IP address of the FTP server
- B. the MAC address of the FTP server
- C. the IP address of each QFX5100

D. the MAC address of each QFX5100

Correct Answer: AD

QUESTION 4

A VXLAN adds 50 to 54 bytes of extra header information to an Ethernet frame. In this scenario, how would you accommodate this increase?

- A. Decrease the number VXLANs used.
- B. Increase the MTU on the physical interface connected to the VXLAN network.
- C. Only use switches as VTEPs.
- D. Increase the MTU on the VTEP interface connected to the VXLAN network.

Correct Answer: B

QUESTION 5

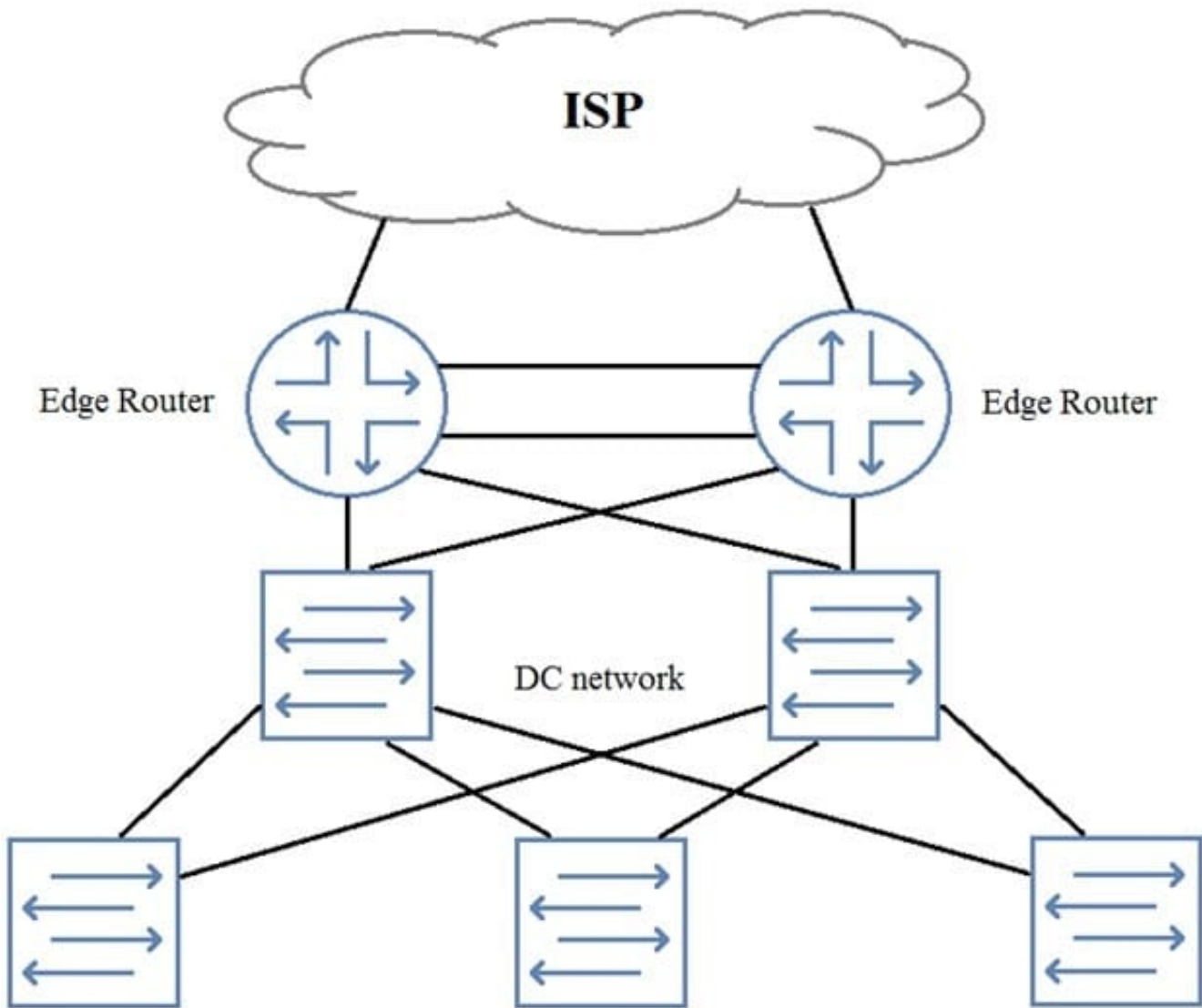
What are two valid types of VXLAN signaling? (Choose two.)

- A. EVPN
- B. RSVP
- C. RSTP
- D. MPLS

Correct Answer: AD

QUESTION 6

You need to add perimeter security to the network shown in the exhibit. All traffic must be inspected for attacks. The edge routers are using all available ports. Your solution must maintain both port and device resiliency.



In this scenario, which design would satisfy these requirements?

- A. one-arm SRX Series device using LAG
- B. one-arm SRX Series chassis cluster
- C. inline SRX Series chassis cluster
- D. inline SPX Series device using LAG

Correct Answer: A

QUESTION 7

You are asked to enable plug-and-play for future line card switches in an active VCF without making any future Junos configuration changes. You are also required to ensure that all new line cards are automatically upgraded to the correct Junos version without any manual intervention.

In this scenario, which two actions will accomplish this task? (Choose two.)

- A. Ensure that the newly inserted line card's MAC addresses are present in the DHCP configuration for ZTP.
- B. Configure the auto-sw-update parameter on the VCF before inserting new line cards.
- C. Set the Virtual Chassis as pre-provisioned before the line cards are inserted.
- D. Set the Virtual Chassis as auto-provisioned before the line cards are inserted.

Correct Answer: BD

QUESTION 8

Which two statements define the use of route targets and route distinguishers in an EVPN? (Choose two.)

- A. Route targets ensure that routes from different clients remain unique within the data center domain.
- B. Route targets identify the VRF into which the route should be placed.
- C. Route distinguishers ensure that routes from different clients remain unique within the data center domain.
- D. Route distinguishers identify the VRF into which the route should be placed.

Correct Answer: BC

QUESTION 9

Which two combinations are supported when configuring a Virtual Chassis Fabric? (Choose two.)

- A. two spine nodes and 28 leaf nodes
- B. four spine nodes and 20 leaf nodes
- C. four spine nodes with 16 leaf nodes
- D. two spine nodes and 16 leaf nodes

Correct Answer: CD

QUESTION 10

You are deploying a VXLAN using EVPN signalling overlay network in your new data center. You are able to establish your MP-BGP peering sessions and see your EVPN routes, but traffic will not traverse the VXLAN using EVPN signalling overlay network.

What is a solution to this problem?

- A. Increase the MTU on the logical VTEP source interface of all devices participating in VXLAN using EVPN signaling.
- B. Enable the mtu-discovery feature on the MP-BGP peering sessions between all VXLANs using EVPN signalling

peers.

C. Increase the protocol MTU on all devices participating in VXLAN using EVPN signalling.

D. Increase the physical MTU on all ports on all devices participating in VXLAN using EVPN signalling.

Correct Answer: D

QUESTION 11

What are three advantages of using MPLS for data center interconnects? (Choose three.)

A. dedicated MPLS backbones for Layer 2 and Layer 3 DCIs

B. any-to-any connectivity

C. traffic engineering

D. dedicated connections between customer sites

E. sub 50 ms failover times

Correct Answer: ACE

QUESTION 12

You are configuring an IP Fabric in your data center and you are trying to load-balance traffic across multiple equal-cost BGP routes. You have enabled multipath, but the traffic is not being load-balanced.

```
user@switch> show route 10.1.2.0/24

inet.0: 11 destinations, 13 routes (11 active,
holddown, 0 hidden)
+ = Active Route, - = Last Active, * = Both

10.1.2.0/24          *[BGP/170] 01:21:05,
localpref 100
                    AS path: 64516 I,
validation-state: unverified
                    to 172.16.3.1 via ge-
0/0/1.0
                    > to 172.16.5.1 via ge-
0/0/2.0
                    [BGP/170] 01:09:08,
localpref 100
                    AS path: 64515 I,
validation-state: unverified
                    > to 172.16.3.1 via ge-
0/0/1.0

user@switch> show route forwarding-table
destination 10.1.2.0/24
Routing table: default.inet
Internet:
Destination          Type RtRef Next hop
                    Type Index  NhRef Netif
10.1.2.0/24          user   0 172.16.5.1
                    ucst   574 4 ge-0/0/2.0
...

user@switch> show configuration policy-options
policy-statement load-balance {
    term lb {
        then {
            load-balance per-packet;
            accept;
        }
    }
}
```

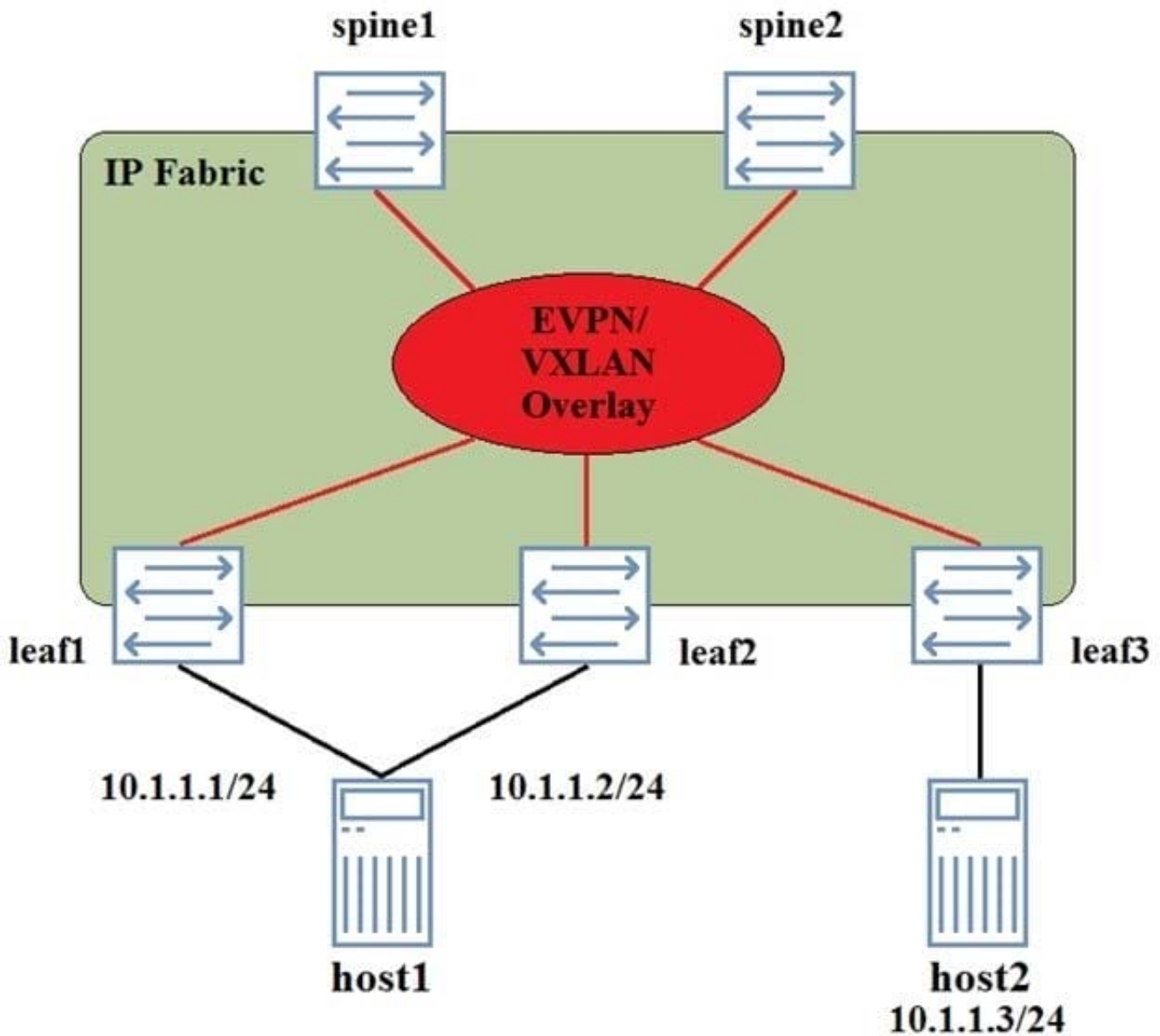

Referring to the exhibit, what will solve this problem?

- A. You should apply the load-balance policy as an import policy to the forwarding table.
- B. You should apply the load-balance policy as an import policy for the BGP neighbor.
- C. You should apply the load-balance policy as an export policy to the forwarding table.
- D. You should apply the load-balance policy as an export policy to the BGP neighbor.

Correct Answer: C

QUESTION 13

An EVPN-signaled VXLAN overlay has been deployed in the network shown in the exhibit. Host1 is a bare metal server, and is dual-homed to the network. The IP addresses 10.1.1.1/24 and 10.1.1.2/24 are assigned to the same physical NIC, and no virtualization is configured on the server.



In this scenario, which two statements are true? (Choose two.)

- A. The MAC address associated with 10.1.1.1/24 and 10.1.1.2/24 will be the same when advertised to leaf3.
- B. The connection from host1 to devices leaf1 and leaf2 must be configured as a LAG.
- C. Traffic from IP address 10.1.1.1/24 must traverse the VXLAN network to reach IP address 10.1.1.2/24.
- D. The ESI assigned to the leaf1-host1 link must be the same as the ESI assigned to the leaf2-host1 link.

Correct Answer: BD

QUESTION 14

You are designing a Layer 3 fabric underlay using EBGp. You will implement an EVPN-signaled VXLAN overlay on the Layer 3 fabric.

In this scenario, what must you do in the underlay to ensure that the VXLAN overlay will be able to function properly?

- A. The underlay should advertise the host-connected interfaces on all leaf devices.
- B. Each device in the underlay should advertise its loopback address.
- C. The underlay should be configured with a separate VRF for each potential tenant.
- D. The underlay should support the PIM protocol.

Correct Answer: B

QUESTION 15

Referring to the exhibit, what would cause the problem on VCP 0/50?

```
{master:0}
user@gfx1> show virtual-chassis vc-port

fpc0:
-----
-----
Interface      Type      Trunk      Status
  Speed      Neighbor
or
              (mbps)      ID
PIC / Port      Configured  ID Interface
0/50            40000      -1         Down
```

- A. The VCP has been disabled through configuration.
- B. The remote side is not configured as a VCP.
- C. VCP 0/50 is configured as a network port.
- D. The port is missing the interface hardware.

Correct Answer: A