

# JN0-412<sup>Q&As</sup>

Cloud, Specialist (JNCIS-Cloud)

## Pass Juniper JN0-412 Exam with 100% Guarantee

Free Download Real Questions & Answers **PDF** and **VCE** file from:

<https://www.certbus.com/jn0-412.html>

100% Passing Guarantee  
100% Money Back Assurance

Following Questions and Answers are all new published by Juniper  
Official Exam Center

- ⚙️ **Instant Download** After Purchase
- ⚙️ **100% Money Back** Guarantee
- ⚙️ **365 Days** Free Update
- ⚙️ **800,000+** Satisfied Customers



### QUESTION 1

You are asked to change the settings in the AppFormix UI so that compute1\\'s status displays "Bad" only when CPU utilization is above 70%.

In which workspace of the AppFormix UI would you perform this task?

- A. SLA Settings
- B. Notification Settings
- C. Plugins
- D. Services Settings

Correct Answer: A

---

### QUESTION 2

Which SDN solution allows the control plane to remain on legacy hardware as a stop-gap measure until you are ready to replace the current hardware?

- A. SDN using NVGRE
- B. SDN as an overlay
- C. SDN using an API
- D. open SDN

Correct Answer: B

---

### QUESTION 3

Which three elements should be used in a greenfield fabric deployment? (Choose three.)

- A. multi-area OSPF
- B. BGP
- C. ZTP
- D. existing IP fabric
- E. LLDP

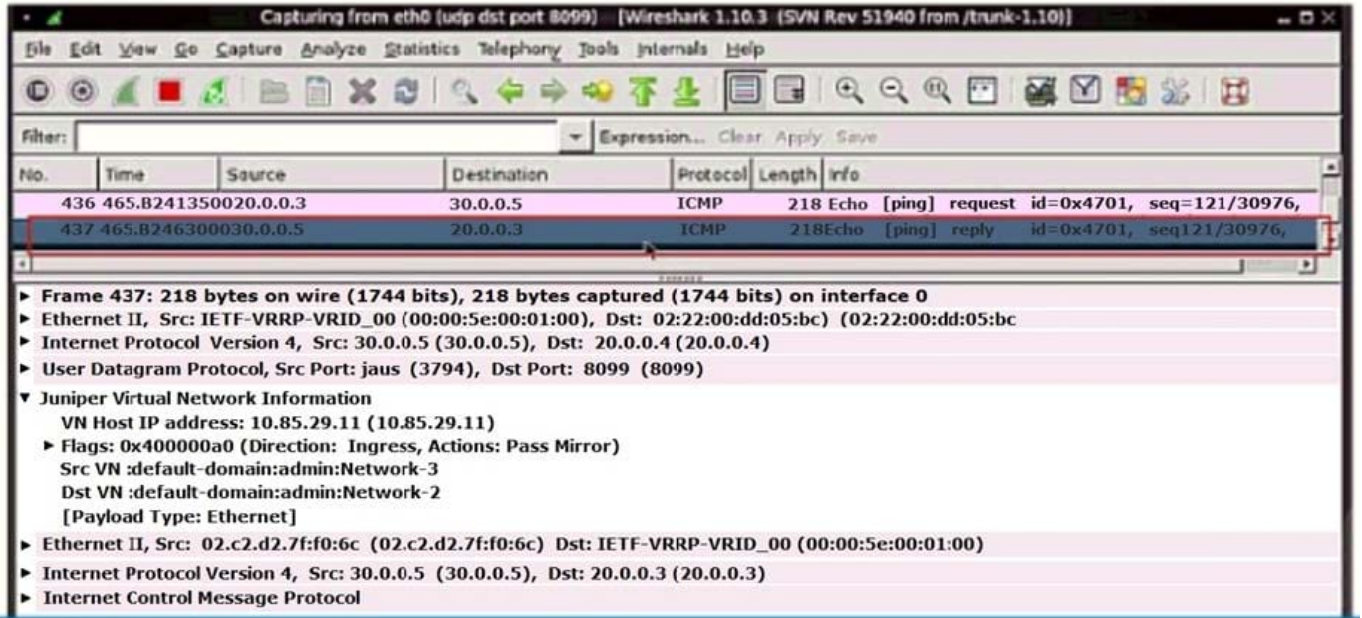
Correct Answer: BCD

Reference: [https://www.juniper.net/documentation/en\\_US/release-independent/solutions/topics/task/configuration/new-fabric-cem-configuring.html](https://www.juniper.net/documentation/en_US/release-independent/solutions/topics/task/configuration/new-fabric-cem-configuring.html)

---

**QUESTION 4**

Click the Exhibit button.



The exhibit displays a Contrail analyzer virtual machine's console. Which two statements are true in this scenario? (Choose two.)

- A. The ping traffic is initiated by a virtual machine with an IP address of 20.0.0.3.
- B. The ping traffic is initiated by a virtual machine with an IP address of 20.0.0.4.
- C. The Contrail analyzer virtual machine's IP address is 10.85.29.11.
- D. The Contrail analyzer virtual machine's IP address is 20.0.0.4.

Correct Answer: AC

**QUESTION 5**

Your development team asks you to provision twenty exact copies of a three-tier application containing three VMs. Each copy of the application must be on their own isolated network. The development team also wants to deploy more copies in the future from a self-service portal.

What will accomplish this task?

- A. Create a Heat orchestration template for the application and then launch twenty stacks using the Horizon dashboard or OpenStack CLI.
- B. Use the Contrail fabric manager to define and launch all twenty stacks using an intent-driven automation feature.
- C. Create all twenty networks and launch each instance using the Horizon instance creation wizard.

D. Create a Heat orchestration template for the application and then launch twenty stacks using the AppFormix user interface.

Correct Answer: A

---

#### QUESTION 6

Which protocol does Contrail use to exchange information between the Contrail Controller and the Contrail vRouter?

A. NETCONF

B. XMPP

C. BGP

D. SSH

Correct Answer: B

---

#### QUESTION 7

Click the Exhibit button.

```
{
- BgpPeerInfoData: {
-   state_info: {
-     last_state: "Idle",
-     state: "Idle",
-     last_state_at: 1394778927107639
-   },
-   families: [
-     "IPv4:Unicast"
-   ],
-   peer_type: "external",
-   local_asn: 54321,
-   configured_families: [
-     "inet-vpn"
-   ],
-   event_info: {
-     last_event_at: 1394778927107880,
-     last_event: "fsm::EvStart"
-   },
-   local_id: 181196816,
-   send_state: "not advertising",
-   peer_address: "10.204.216.253",
-   peer-id:181197053,
-   hold_tine: 90,
-   peer_asn: 12345
- }
}
```

Within your Contrail cluster, a BGP peer is not advertising routes as expected. After issuing the curl `http://:8081/analytics/uves/bgp-peers` command, you receive the output show in the exhibit.

What is causing this problem?

- A. an incorrect local ID
- B. an incorrect peer type
- C. an incorrect IP address
- D. an incorrect family

Correct Answer: D

#### QUESTION 8

You are deploying Contrail in your existing network and you must ensure that it manages your current IP fabric underlay.

Which two routing protocols are supported in this scenario? (Choose two.)

- A. EBGp
- B. RIP
- C. OSPF
- D. EIGRP

Correct Answer: AC

Reference: [https://www.juniper.net/documentation/en\\_US/release-independent/solutions/informationproducts/pathway-pages/sg-009-contrail-enterprise-multicloud.pdf](https://www.juniper.net/documentation/en_US/release-independent/solutions/informationproducts/pathway-pages/sg-009-contrail-enterprise-multicloud.pdf)

---

#### QUESTION 9

Two virtual machines that belong to the same virtual network are not able to communicate with each other. Which statement is true in this scenario?

- A. A floating IP address is assigned to the virtual machine.
- B. Images used to spawn the two virtual machines have different flavors.
- C. A security group is blocking the communication.
- D. The two virtual machines are in different availability zones.

Correct Answer: C

---

#### QUESTION 10

You are creating an AppFormix dynamic alarm definition with a dynamic threshold.

In this scenario, which three parameters are available? (Choose three.)

- A. baseline analysis algorithm
- B. state
- C. owner
- D. sensitivity
- E. learning period duration

Correct Answer: ADE

Reference: [https://www.juniper.net/documentation/en\\_US/appformix/topics/concept/appformix-alarms.html](https://www.juniper.net/documentation/en_US/appformix/topics/concept/appformix-alarms.html)

---

### QUESTION 11

In which OpenStack core service would you find disk snapshots?

- A. Glance
- B. Trove
- C. Cinder
- D. Swift

Correct Answer: A

Reference: [https://access.redhat.com/documentation/en-us/red\\_hat\\_openshift\\_platform/8/html/architecture\\_guide/components](https://access.redhat.com/documentation/en-us/red_hat_openshift_platform/8/html/architecture_guide/components)

---

### QUESTION 12

Which two OpenStack components are optional services? (Choose two.)

- A. Nova
- B. Heat
- C. Glance
- D. Magnum

Correct Answer: CD

---

### QUESTION 13

You are asked to create a connection between a VM and two ports on a QFX leaf device in the fabric.

Which Contrail feature must you configure to accomplish this task?

- A. virtual network policy
- B. floating IP
- C. virtual port group
- D. virtual network with route leaking

Correct Answer: C

Reference: [https://www.juniper.net/documentation/en\\_US/contrail19/information-products/pathway-pages/contrail-fabric-lifecycle-management-feature-guide.pdf#page=113andzoom=100,100,712](https://www.juniper.net/documentation/en_US/contrail19/information-products/pathway-pages/contrail-fabric-lifecycle-management-feature-guide.pdf#page=113andzoom=100,100,712)

---

#### QUESTION 14

What are two characteristics of containers used in Contrail? (Choose two.)

- A. Each container has the configuration for all applications running in that container.
- B. Each pod can contain only one container.
- C. Each container has the configuration for all applications running in all containers.
- D. Each pod can contain several containers.

Correct Answer: AB

Reference: [https://www.juniper.net/documentation/en\\_US/contrail19/topics/concept/summary-of-containerdesign.html](https://www.juniper.net/documentation/en_US/contrail19/topics/concept/summary-of-containerdesign.html)

---

#### QUESTION 15

Which Kubernetes resource defines the traffic allowed to reach the pod?

- A. SecurityGroup
- B. NetworkPolicy
- C. Ingress
- D. IPAM

Correct Answer: B

Reference: [https://www.juniper.net/documentation/en\\_US/contrail19/topics/concept/k8s-networkpolicy.html](https://www.juniper.net/documentation/en_US/contrail19/topics/concept/k8s-networkpolicy.html)

[JN0-412 PDF Dumps](#)

[JN0-412 Practice Test](#)

[JN0-412 Exam Questions](#)