

JN0-105^{Q&As}

Junos - Associate (JNCIA-Junos)

Pass Juniper JN0-105 Exam with 100% Guarantee

Free Download Real Questions & Answers **PDF** and **VCE** file from:

<https://www.certbus.com/jn0-105.html>

100% Passing Guarantee
100% Money Back Assurance

Following Questions and Answers are all new published by Juniper
Official Exam Center

- ⚙️ **Instant Download** After Purchase
- ⚙️ **100% Money Back** Guarantee
- ⚙️ **365 Days** Free Update
- ⚙️ **800,000+** Satisfied Customers



QUESTION 1

Which two statements describe the default behavior for OSPF? (Choose two)

- A. OSPF imports all routes into the inet4.0 routing table.
- B. OSPF exports all static routes into the OSPF database.
- C. OSPF imports all routes into the inet.O routing table.
- D. OSPF does not export static routes into the OSPF database.

Correct Answer: CD

QUESTION 2

What are two configurable physical interface properties? (Choose two.)

- A. MTU
- B. address
- C. protocol family
- D. link mode

Correct Answer: AC

QUESTION 3

You are creating a new policy to accept and redistribute routes into you IGP.

In this scenario, which match criteria would you use to identify the route prefixes to select?

- A. neighbor
- B. route-filter
- C. instance
- D. route-type

Correct Answer: B

QUESTION 4

Which two components are included in a transport header? (Choose two.)

- A. source port number

- B. source MAC address
- C. destination MAC address
- D. destination port number

Correct Answer: AD

QUESTION 5

Which Junos OS component is responsible for maintaining the forwarding table?

- A. Packet Forwarding Engine
- B. chassis control daemon
- C. Routing Engine
- D. management daemon

Correct Answer: C

QUESTION 6

Click the Exhibit button.

```
[edit]
user@router# set interfaces ge-0/1/2 unit family inet address 172.16.101.1/24
[edit]
user@router# commit check
configuration check succeeds
[edit]
user@router#
```

You need to configure interface ge-0/1/2 with an IP address of 172.16.100.1/24. You have accidentally entered 172.16.101.1/24 as shown in the exhibit.

Which command should you issue to solve the problem?

- A. [edit] user@router# rollback rescue
- B. [edit] user@router# rollback 1
- C. [edit] user@router# rollback 0
- D. [edit] user@router# rollback 2

Correct Answer: C

QUESTION 7

What is the purpose of the load merge command?

- A. to add or delete variables from the configuration based on the contents of a specified path file.
- B. to completely overwrite the current configuration with the configuration you load.
- C. to combine the current configuration with the configuration you load.
- D. to look for a replace tag in the configuration you load.

Correct Answer: C

QUESTION 8

Which service does RADIUS provide?

- A. routing
- B. authentication
- C. DNS resolution
- D. time synchronization

Correct Answer: B

QUESTION 9

You must verify that interface ge-0/0/0.0 is administratively up and that the link is up.

In this scenario, which command will accomplish this task?

- A. show configuration interfaces ge-0/0/0.0
- B. show chassis fpc pic-status
- C. show system information
- D. show interfaces terse

Correct Answer: D

Ref: show interfaces | Junos OS | Juniper Networks "show interfaces ... Sample Output ... show interfaces terse
user@host> show interfaces terse Interface Admin Link Proto Local Remote ge-0/0/0 up up ge-0/0/0.0 up up inet
10.209.4.61/18 gr-0/0/0 up up ..."

QUESTION 10

After the factory default configuration is loaded, which configuration object must be created prior to the first commit?

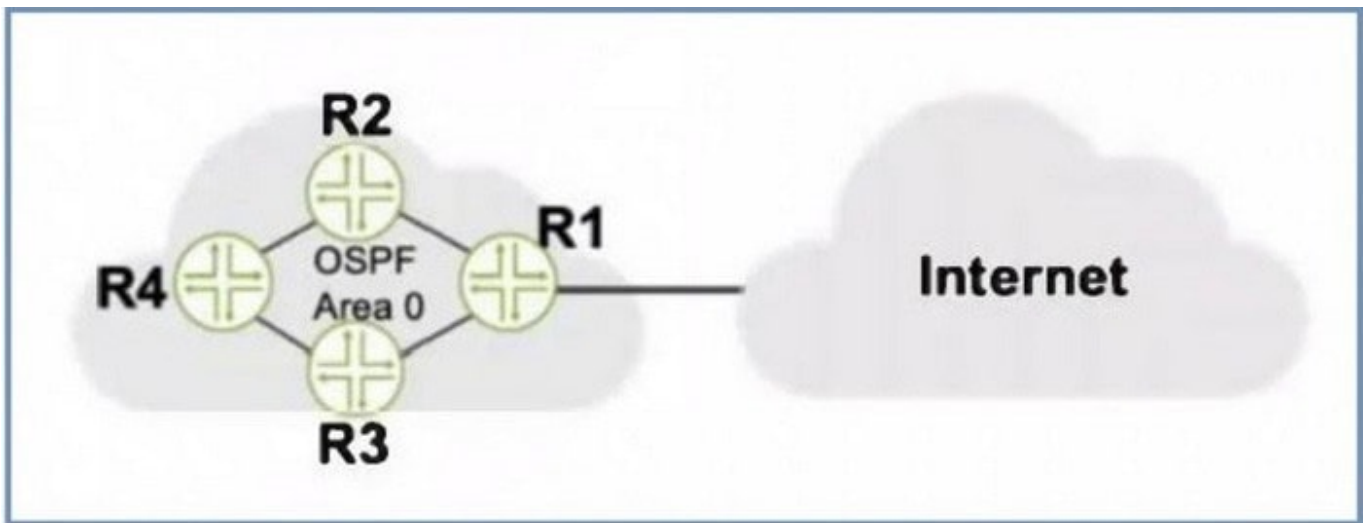
- A. root authentication

- B. loopback IP address
- C. host name
- D. out-of-band connectivity

Correct Answer: A

QUESTION 11

Click the Exhibit button.



Referring to the exhibit, what should be configured on R1 to advertise a default static route into OSPF?

- A. a firewall filter
- B. a routing policy
- C. a loopback interface
- D. a management interface

Correct Answer: B

QUESTION 12

Which process in the Junos OS is responsible for device management tasks including the CLI and commit operations?

- A. mgd
- B. chassisd
- C. dcd
- D. rpd

Correct Answer: A

QUESTION 13

Which two statements are correct about Junos traceoptions? (Choose two.)

- A. Traceoption output, by default, is stored in /var/log/.
- B. Traceoptions cannot be enabled in a production environment.
- C. Traceoptions are enabled by default.
- D. Traceoptions are enabled through configuration.

Correct Answer: AD

QUESTION 14

Which two statements are correct about a Routing Engine? (Choose two.)

- A. It processes CoS marked traffic.
- B. It processes management traffic.
- C. It maintains routing tables.
- D. It forwards transit traffic.

Correct Answer: BC

QUESTION 15

Which two statements are true about the Junos OS? (Choose two.)

- A. Routing tables are stored in the control plane.
- B. Routing tables are stored in the forwarding plane.
- C. Exception traffic is never sent to the control plane.
- D. Exception traffic is sent to the control plane.

Correct Answer: AD

[JN0-105 Practice Test](#)

[JN0-105 Exam Questions](#)

[JN0-105 Braindumps](#)