

# HP2-Z30<sup>Q&As</sup>

Fast Track - Applying HP FlexNetwork Fundamentals

**Pass HP HP2-Z30 Exam with 100% Guarantee**

Free Download Real Questions & Answers **PDF** and **VCE** file from:

<https://www.certbus.com/hp2-z30.html>

100% Passing Guarantee  
100% Money Back Assurance

Following Questions and Answers are all new published by HP Official Exam Center

-  **Instant Download** After Purchase
-  **100% Money Back** Guarantee
-  **365 Days** Free Update
-  **800,000+** Satisfied Customers



### QUESTION 1

Which Intelligent Management Center (IMC) group role allows an administrator to manage networking devices, but cannot add new IMC administrative users?

- A. Operator
- B. Administrator
- C. Manager
- D. Maintainer

Correct Answer: D

---

### QUESTION 2

Which HP Provision switch command controls the logging level of messages sent to a syslog server?

- A. info-center level
- B. logging severity
- C. logging-host trap-level
- D. syslog severity

Correct Answer: B

Explanation: if your syslog server is at 10.0.0.5 then you would do this:

```
switch#configure terminal switch(config)#logging 10.0.0.5 Change the severity also depending on your needs  
switch(config)#logging severity
```

---

### QUESTION 3

A network administrator acquires a new HP Comware switch from HP with the factory default settings. The network administrator logs into the console port and configures the following information: user-interface aux0 quit super password level 0 simple hp0 super password level 1 simple hpl super password level 2 simple hp2 super password level 3 simple hp3 What happens the next time the network administrator logs into the console?

- A. The network administrator is immediately taken to level 3 with no password prompted.
- B. The network administrator must enter a password of hp3.
- C. The network administrator must perform the password recovery procedure because it was incorrectly configured.
- D. The network administrator must enter a password of hp0.

Correct Answer: B

---

#### QUESTION 4

Which statement is true about the management of HP ProVision and Comware switches?

- A. Telnet SSH are enabled by default on Comware switches.
- B. Telnet is enabled but SSH is disabled on ProVision switches.
- C. Comware switches, by default, store usernames and passwords in a separate configuration file.
- D. ProVision switches, by default, store usernames and passwords in a separate configuration file.

Correct Answer: D

---

#### QUESTION 5

Which IMC agent starts and stops the IMC server and allows a network administrator to view the status of the IMC processes?

- A. Policy Administration Agent (PAA)
- B. Deployment Monitoring Agent (DMA)
- C. Administration Deployment Agent (ADA)
- D. IMC Processing Agent (IPA)

Correct Answer: B

---

#### QUESTION 6

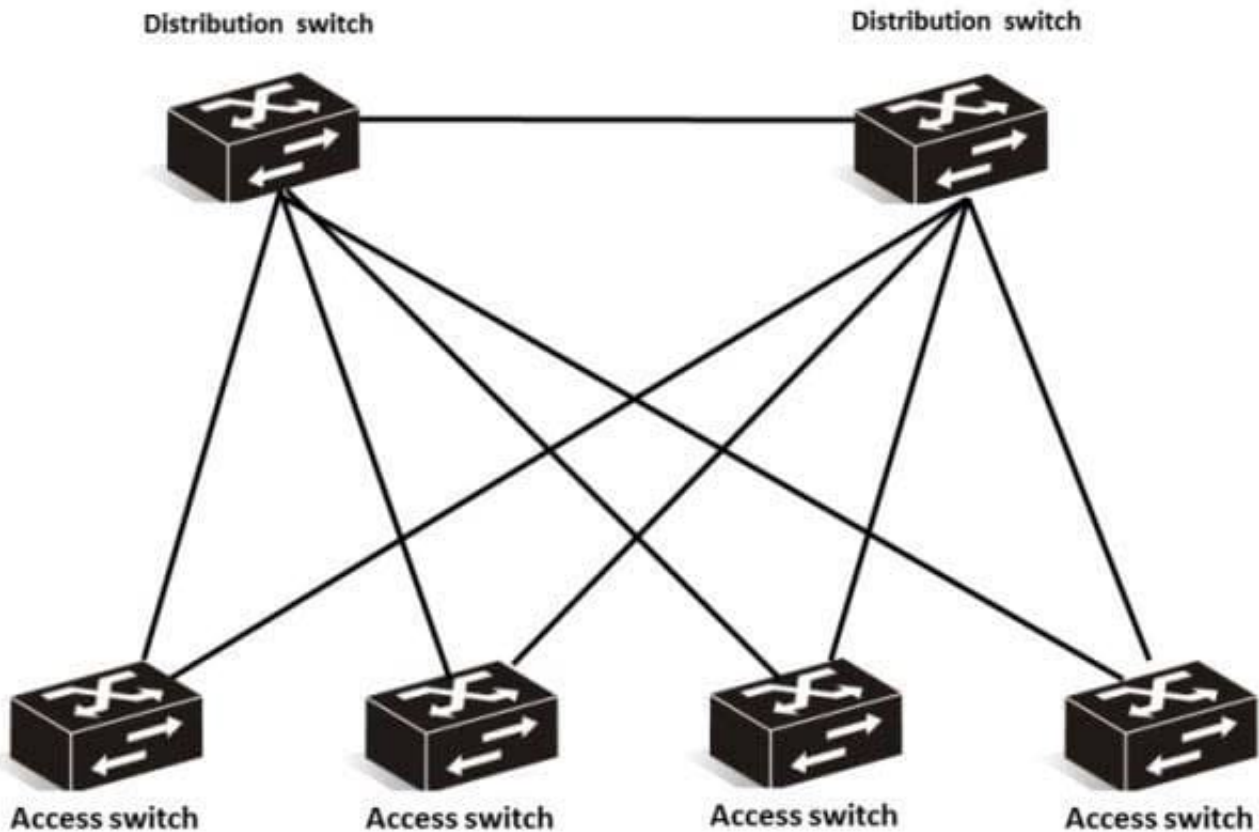
What is the console port designation for an HP Comware switch?

- A. interface console
- B. con 0
- C. aux 0
- D. console

Correct Answer: C

---

#### QUESTION 7



A network administrator has two distribution layer switches and four access layer switches. The network administrator is constantly resolving Spanning Tree problems and is looking for an alternative solution that provides redundancy and no Spanning Tree.

- A. ProVision switches with routing
- B. ProVision switches with aggregation
- C. Comware switches with auto-links
- D. Comware switches with distributed trunking

Correct Answer: B

### QUESTION 8

Which component of an HP Comware switch controls logging on to a syslog server?

- A. Log Parser
- B. Event Analyzer
- C. Information Center
- D. Event Log

Correct Answer: C

---

#### QUESTION 9

What is the default username and password an administrator would use to log into a new HP MSM access point?

- A. username of "hp" and password of "hp"
- B. username of "msm" and password of "wireless"
- C. username of "admin" and password of "hp"
- D. username of "admin" and password of "admin"

Correct Answer: D

---

#### QUESTION 10

Refer to the HP Comware configuration. interface vlan 1 ip address 10.1.1.1 255.255.255.0 quit interface vlan 2 ip address 10.1.2.1 255.255.255.0 quit interface loopback 1

ip address 1.1.1.1 255.255.255.255 quit router-id 1.1.1.1 area 0 network 1.0.0.0 0.255.255.255 network 10.1.1.0 0.255.255.255 The network administrator set up VLAN 2 as a management VLAN. This VLAN should not be included in the OSPF routing process. Now only directly connected network administrators in VLAN 2 can manage the switch. How should the network administrator solve this problem?

- A. Define the management-vlan 2 command.
- B. Change the network command in OSPF.
- C. Define the VLAN 2 interface as a silent interface.
- D. Define the ip authorized-managers 10.1.0.0/24 command.

Correct Answer: C

---

#### QUESTION 11

Which 802.1X component seeks authentication?

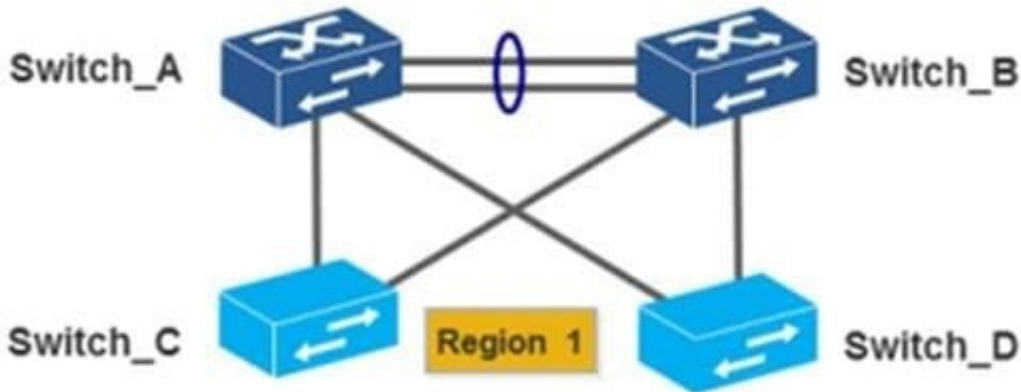
- A. processee
- B. supplicant
- C. authenticatee
- D. authenticator

Correct Answer: B

---

**QUESTION 12**

Refer to the network exhibit.



Switch\_A and Switch\_B are HP Comware switches currently in the same MSTP region with the following MSTP configuration:

Region name: HP

Revision number 1

Instance 1: VLANs 10 and 11

Instance 2: VLANs 12 and 13

Instance 0: VLANs 1-9 and 14-4094

MSTP is operating correctly on Switch\_A and Switch\_B. Switch\_C and Switch\_D are new Comware switches and have been added to the network. The links between the switches are trunks, where VLAN 1 is the PVID and all other VLANs are permitted on the trunks. The only STP command executed on the two new switches is stp enable. Based on this information, what is the resulting Layer 2 topology?

- A. All uplinks are blocked until the new switches have MSTP configured correctly.
- B. A Layer 2 loop will result, creating a broadcast storm,
- C. Only one uplink from each new switch will be utilized.
- D. Both uplinks from the new switches are utilized but load sharing is inefficient

Correct Answer: D

**QUESTION 13**

Which task should a network administrator include in the creation of an upgrade policy?

- A. Update network management software before deploying upgrades to network switches.
- B. Make a copy of the original operating system.

- C. Test the upgrade on a core switch.
- D. Read the release notes of the original operating system.

Correct Answer: B

---

#### QUESTION 14

Which action can be performed from an HP Comware switch?

- A. Execute the super command to change privilege levels.
- B. Execute the startup-default command to define the configuration file to load upon bootup.
- C. Execute the show flash command to examine the operating systems stored in flash.
- D. Execute the boot set-default flash command to define the default operating system to load.

Correct Answer: A

---

#### QUESTION 15

A customer must connect networks in two buildings. The buildings are 15 meters apart. The customer does not want the additional cost of installing fiber between the two buildings and thus is exploring wireless options.

If the customer selects an 802.11n wireless solution, which wireless mode should they use?

- A. inline
- B. infrastructure
- C. in-cell relay
- D. multipoint

Correct Answer: C

[Latest HP2-Z30 Dumps](#)

[HP2-Z30 Study Guide](#)

[HP2-Z30 Exam Questions](#)