

# HP0-Y52<sup>Q&As</sup>

Applying HP FlexNetwork Fundamentals

**Pass HP HP0-Y52 Exam with 100% Guarantee**

Free Download Real Questions & Answers **PDF** and **VCE** file from:

<https://www.certbus.com/hp0-y52.html>

100% Passing Guarantee  
100% Money Back Assurance

Following Questions and Answers are all new published by HP Official Exam Center

-  **Instant Download** After Purchase
-  **100% Money Back** Guarantee
-  **365 Days** Free Update
-  **800,000+** Satisfied Customers



### QUESTION 1

Refer to the exhibit.

```
[Comware] display ip routing-table
Routing Tables: Public
Destinations : 7      Routes : 7
Destination/Mask    Proto  Pre  Cost  NextHop    Interface
10.2.0.0/17         OSPF   10   110   10.1.1.5   Vlan3
10.2.64.0/19        OSPF   10   120   10.1.1.5   Vlan3
10.2.192.0/18       OSPF   10   40    10.1.1.13  Vlan5
10.2.64.0/18        OSPF   10   130   10.1.1.13  Vlan5
10.2.128.0/17       OSPF   10   30    10.1.1.5   Vlan3
<-output omitted->
```

Examine the partial HP switch output shown in the exhibit. Based on this output, if the switch receives a packet with a destination IP address of 10.2.90.87, which entry in the routing table would the switch use to forward the packet?

- A. 10.2.128.0/17
- B. 10.2.0.0/17
- C. 10.2.64.0/19
- D. 10.2.64.0/18

Correct Answer: C

---

### QUESTION 2

Which statement correctly defines the management capabilities of an HP MultiService Mobility (MSM) access point (AP)?

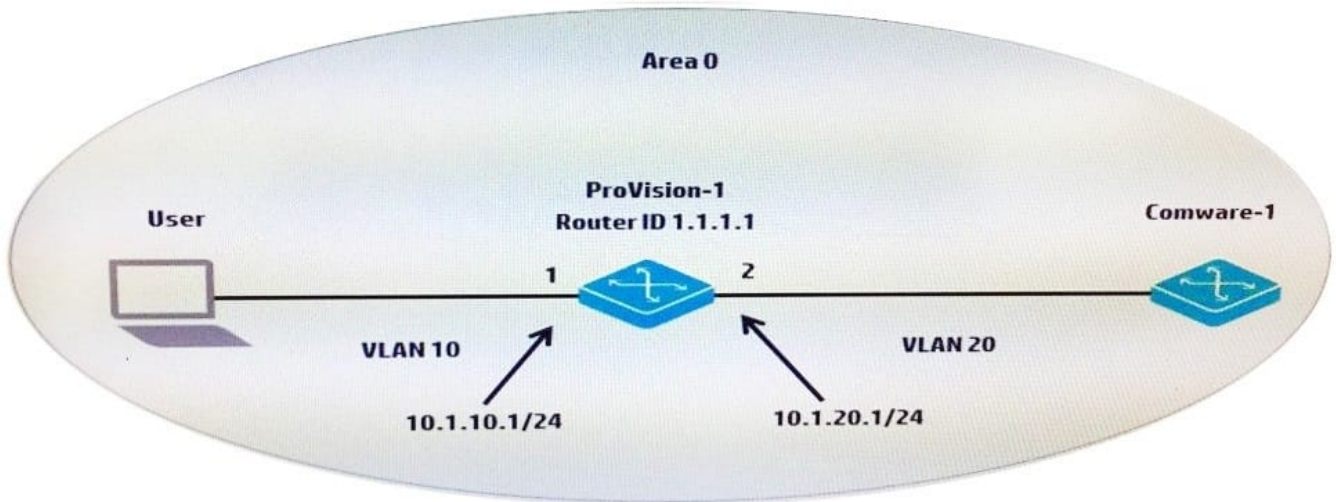
- A. The AP only supports controlled mode.
- B. The AP operates in autonomous mode by default, but can be changed to controlled mode.
- C. The AP operates in controlled mode by default, but can be changed to autonomous mode.
- D. The AP only supports autonomous mode.

Correct Answer: C

---

### QUESTION 3

Refer to the exhibit.



A network administrator sets up OSPF in part of the network topology shown in the exhibit. The Comware-1 switch is already configured. The administrator needs to configure ProVision-1 so that:

-OSPF includes VLANs 10 and 20 in the routing process.

-

The router ID of 1.1.1.1 is assigned to the switch.

-

The ProVision-1 switch can successfully build a neighbor adjacency with the Comware-1 switch. Which configuration should the administrator apply to the ProVision-1 switch to meet these requirements?

A.

```
router-id 1.1.1.1
router ospf area 0
vlan 10 ip ospf area 0
vlan 20 ip ospf area 0
```

B.

```
router ospf router-id 1.1.1.1
area 0 vlan 10
area 0 vlan 20
enable
```

C.

```
router ospf
router-id 1.1.1.1
area 0 vlan 10
area 0 vlan 20
```

D.

```
ip router-id 1.1.1.1
router ospf
area 0
enable
vlan 10 ip ospf area 0
vlan 20 ip ospf area 0
```

Correct Answer: D

#### QUESTION 4

A network administrator is configuring a static route. What should the administrator use as the next hop address?

A. the IP address on the local interface that is used to egress traffic towards its destination

- B. the lowest IP address on the neighboring router in the path towards its destination
- C. the IP address on the connected interface of a neighboring router in the path towards its destination
- D. the IP address of the default gateway in the destination subnet

Correct Answer: C

---

#### QUESTION 5

A network administrator enters this command on an HP Comware switch:

```
save
```

In interactive mode, the administrator is prompted to save to a file named config.cfg and confirms the save. What is the effect of these actions?

- A. The current configuration is saved to config.cfg on a TFTP server but is not used for the startup-config.
- B. The startup-config, rather than the correct configuration, is saved to config.cfg on a TFTP server.
- C. The current configuration is saved to config.cfg in the flash but is not used for the startup-config.
- D. The current configuration is saved to config.cfg in the flash and is used for the startup- config.

Correct Answer: D

---

#### QUESTION 6

A network administrator wants to disable physical interfaces 13-24 on an HP ProVision switch. How can the administrator do this?

- A. Create a named port group for interfaces 13-24. Then disable the named port group.
- B. Use the interface disable command. Specify 13-24 for the ID.
- C. Assign the range of interfaces to a VLAN. Then, disable the VLAN.
- D. Create a named range for interfaces 13-24. Then, disable the named range.

Correct Answer: D

---

#### QUESTION 7

Refer to the exhibit.

```
<Switch> display port trunk
```

Interface	PVID	VLAN passing
GE1/0/19	1	1,11

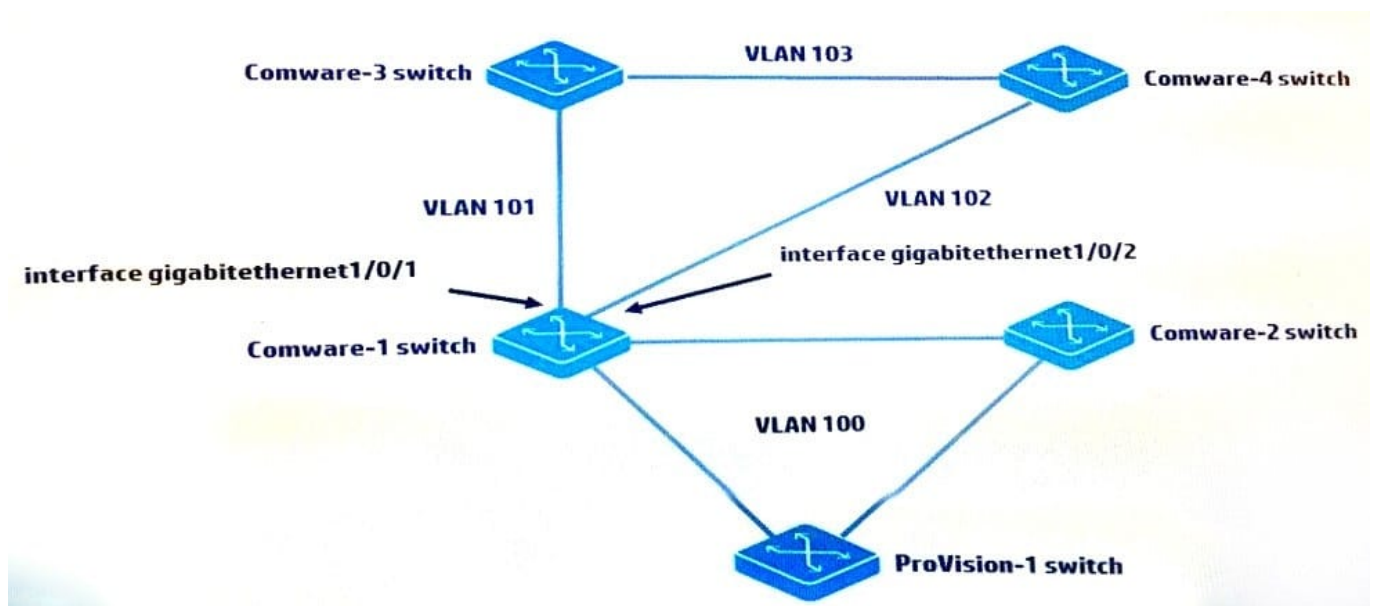
The network administrator has configured this port to permit all VLANs. The output in the exhibit indicates that the port is only passing VLANs 1 and 11. The administrator wants the port to pass VLAN 12 as well. What should the administrator do to accomplish this?

- A. Enable IP routing.
- B. Add VLAN 12 to the switch.
- C. Change the port link-type to hybrid.
- D. Change the port link-type to access.

Correct Answer: A

### QUESTION 8

Refer to the exhibit.



MSTP is configured on all switches shown in the exhibit. The Comware-1, Comware-3, and Comware-4 switches are set up for OSPF. Comware-1 and Comware-4 switches fail to achieve neighbor adjacency. The network administrator analyzes the issue and determines that MSTP is blocking on port gigabitethernet1/0/2 on Comware-1.

Which configuration should the administrator configure on ports g1/0/1 and g1/0/2 to allow Comware-1 to form the correct OSPF adjacencies with Comware-3 and Comware-4?

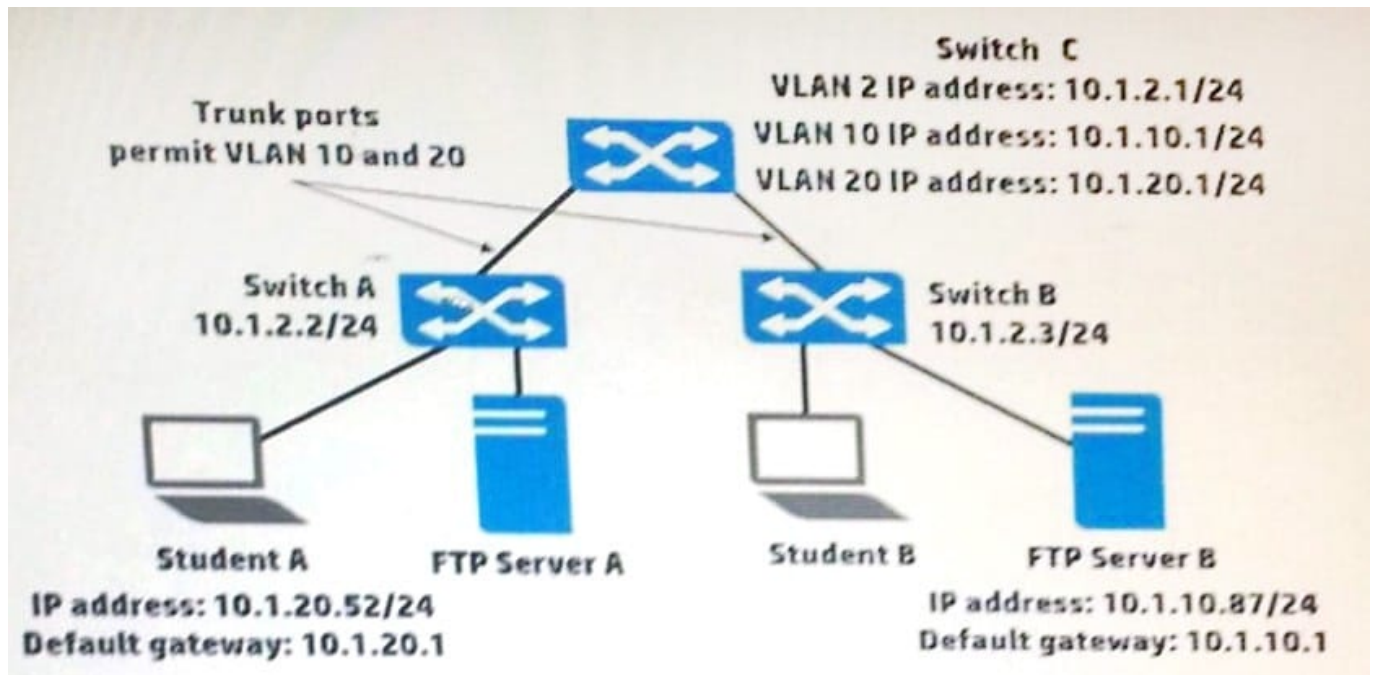
- A. interface g1/0/1 spanning-tree bpdu-filter quit interface g1/0/2 spanning-tree bpdu-filter quit

- B. interface g1/0/1undo stp enablequitinterface g1/0/2undo stp enablequit
- C. interface g1/0/1stp link-mode routequitinterface g1/0/2stp link-mode routequit
- D. interface g1/0/1stp bpdu-filterquitinterface g1/0/2stp bpdu-filterquit

Correct Answer: A

**QUESTION 9**

Refer to the exhibit.



Assume that Student A's ARP table is empty. Student A is preparing to send an FTP packet to FTP Server B and needs to discover the proper destination MAC address. For which IP address does Student A send an ARP request?

- A. 10.1.10.1
- B. 10.1.10.87
- C. 10.1.2.2
- D. 10.1.20.1

Correct Answer: D

**QUESTION 10**

A network administrator establishes an aggregated link between an HP Comware and ProVision switch. VLAN 1 is untagged and VLANs 2 and 3 are tagged. The administrator configures these commands on the Comware switch:

```
interface bridge-aggregation 1
  quit
interface g1/0/1
  port link-aggregation group 1
  quit
interface g1/0/2
  port link-aggregation group 1
  quit
interface bridge-aggregation 1
  port link-type trunk
  port trunk permit vlan all
  quit
```

The administrator configures these commands on the ProVision switch:

```
trunk 1-2 trk1 lacp
vlan 2 tagged trk1
vlan 3 tagged trk1
```

Some of the links in the aggregated link become blocked.

Which Comware configuration should the administrator apply to the Comware switch to resolve this issue?

- A. interface bridge-aggregation 1 link-aggregation mode dynamic
- B. interface bridge-aggregation 1 link-aggregation type lacp dynamic
- C. interface bridge-aggregation 1 link-aggregation mode static
- D. interface bridge-aggregation 1 link-mode type lacp

Correct Answer: A

---

#### QUESTION 11

A network administrator wants an HP switch to use an IP address that is always up for its Open Shortest Path First (OSPF) router ID. Which address meets this requirement?

- A. An IP address configured as the global management address
- B. An IP address on the interface for the default VLAN, which is typically VLAN 1
- C. An IP address on the VLAN 1 interface
- D. An IP address on a loopback interface

Correct Answer: D

---

#### QUESTION 12

A network administrator deletes old files in the flash file system of an HP Comware switch. The administrator then notices that the amount of free space available has not changed. Which command must the administrator execute to free up the space from deleted files?

- A. reset recycle-bin
- B. recycle-bin cleanup
- C. cleanup recycle-bin
- D. recycle-bin empty

Correct Answer: A

---

### QUESTION 13

When adding a new member to an existing IRF domain, which of the following must you perform first?

- A. Define the IRF priority.
- B. Create the IRF logical port.
- C. Define the IRF domain name.
- D. Define the IRF member number.

Correct Answer: D

---

### QUESTION 14

Which HP device or port type can modify, read, and respond with frames that include 802.1Q VLAN tags?

- A. Comwaretrunk ports
- B. Comwareroute-mode ports
- C. ProVisionloopback ports
- D. ProVisionuntagged ports

Correct Answer: A

---

### QUESTION 15

Which HP solution provides network optimization and automated network provisioning to its customers?

- A. Intelligent Management Center NTA
- B. FlexNetwork Architecture
- C. Intelligent Resilient Framework



D. Software-defined Networking

Correct Answer: D

[Latest HP0-Y52 Dumps](#)

[HP0-Y52 PDF Dumps](#)

[HP0-Y52 Exam Questions](#)