

C9550-275^{Q&As}

Bluemworks Live IBM Business Process Manager Express or Standard Edition V8.0 BPM Analysis

Pass IBM C9550-275 Exam with 100% Guarantee

Free Download Real Questions & Answers **PDF** and **VCE** file from:

<https://www.certbus.com/c9550-275.html>

100% Passing Guarantee
100% Money Back Assurance

Following Questions and Answers are all new published by IBM Official Exam Center

- ⚙️ **Instant Download** After Purchase
- ⚙️ **100% Money Back** Guarantee
- ⚙️ **365 Days** Free Update
- ⚙️ **800,000+** Satisfied Customers



QUESTION 1

The Human Resources department has pre-selected 4 processes as candidates for BPM Implementation. They think all these 4 processes have equal business value. They hire a BPM analyst to identify 1 process for BPM Implementation. What questions must the BPM analyst ask in order to identify a process for implementing BPM.

A. 1. Does the process change frequently?

2.

Are tasks being communicated informally through emails and phone calls?

3.

Does this project have enough IT challenges?

4.

Does the process integrate with at least 3 systems?

B. 1. Does the process change frequently?

2.

Are tasks being communicated informally through emails and phone calls?

3.

Is the same data entered multiple times into multiple systems?

4.

Is there poor visibility into process performance?

C. 1. Does the process integrate with at least 3 systems?

2.

Are tasks being communicated informally through emails and phone calls?

3.

Is the same data entered multiple times into multiple systems?

4.

Is there poor visibility into process performance?

D. 1. Is there poor visibility into process performance?

2.

Does the process have ad-hoc events?

3.

Is the same data entered multiple times into multiple systems?

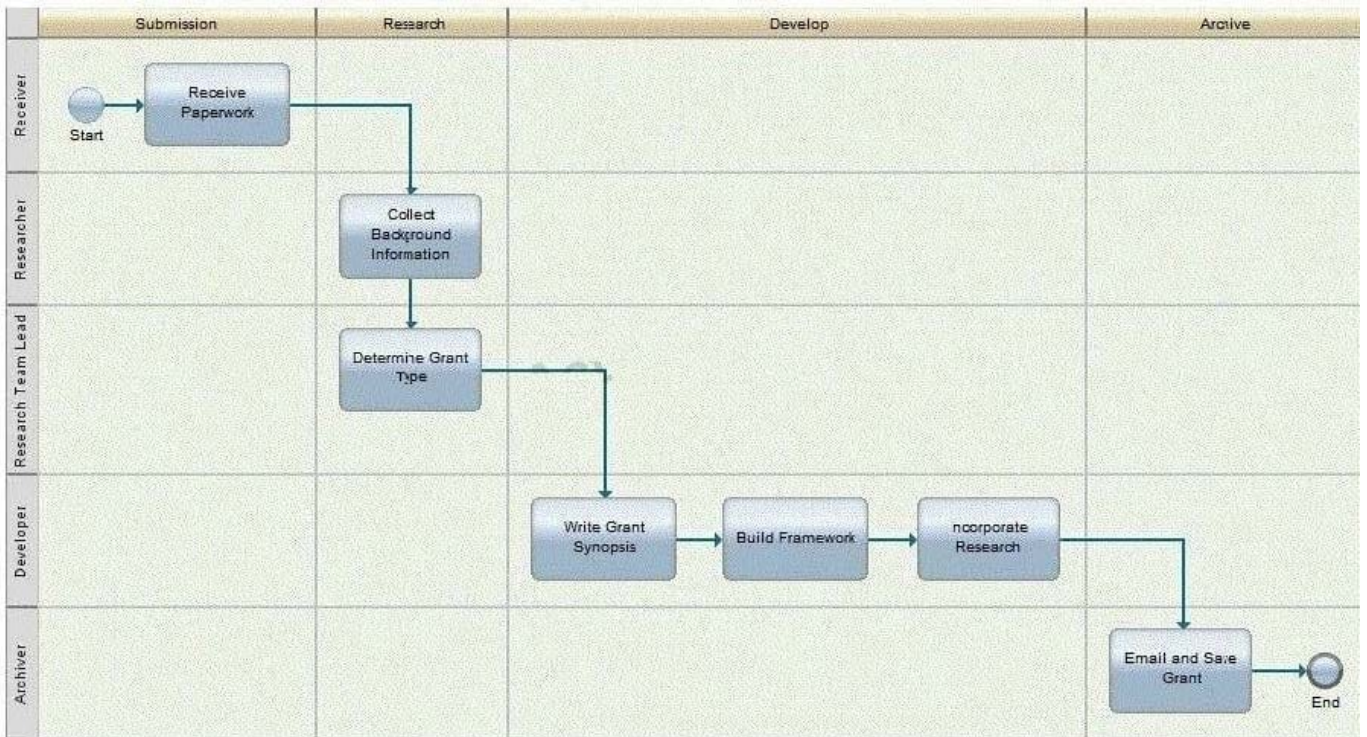
4.

Does this project have enough IT challenges?

Correct Answer: B

QUESTION 2

A BPM analyst has built the following process diagram during a process discovery workshop.



Each activity noted above will have a separate Coach displayed in IBM Business Process Manager V8.0. How would the BPM analyst adjust the diagram to capture this requirement while adhering to best practices for proper process modeling granularity?

- A. Combine the Developer's 3 activities into a sub-process.
- B. Add a separate swimlane for each activity in the Developer swimlane.
- C. Add a separate milestones for each activity in the Developer swimlane.
- D. Color each activity with a different color to indicate separate Coaches.

Correct Answer: A

QUESTION 3

A BPM analyst needs to define user stories for development. What information does the BPM analyst need to know about user stories? User stories:

- A. contain all required implementation details needed by developers.
- B. focus on what is required and not on how the requirements are met.
- C. support waterfall development and are completely defined before development begins.
- D. with less business value must not be defined since they are not going to be developed.

Correct Answer: B

QUESTION 4

A BPM analyst is helping to identify and select the appropriate solution for process improvement in a large BPM project. What are the business levers the BPM analyst should focus on?

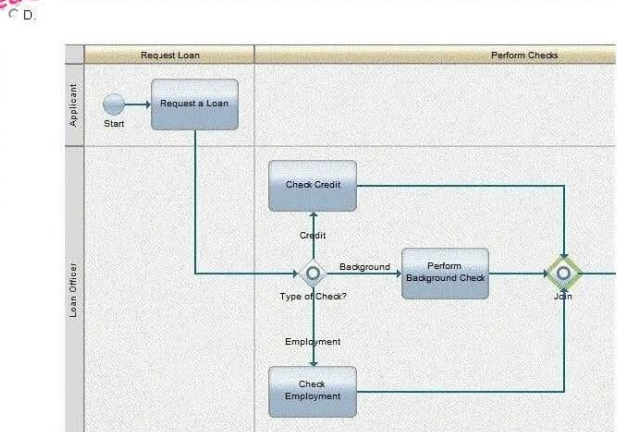
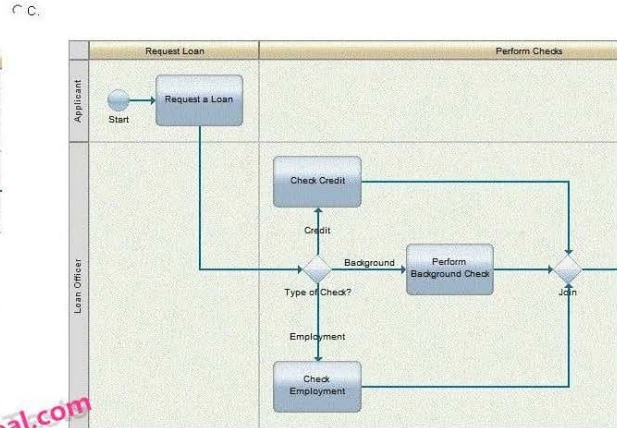
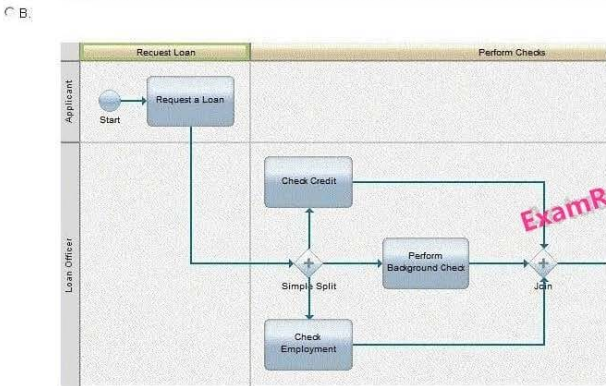
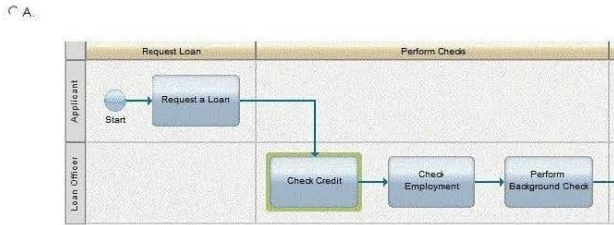
- A. Policy, Technology, Organization and People
- B. Policy, Data, Organization and People
- C. Process, Technology, Organization and People
- D. Process, Data, Organization and People

Correct Answer: C

QUESTION 5

A BPM analyst is mapping a Mortgage Loan Approval Process. When the applicant requests a loan, the Loan officer must start the credit check, employment check and background check at the same time.

How should the BPM analyst map this process?



- A. Exhibit A
- B. Exhibit B
- C. Exhibit C
- D. Exhibit D

Correct Answer: B

QUESTION 6

A company needs to improve its hiring process and hired a BPM analyst to map the current state. During the process discovery session, the team identifies that the process steps to review the "hiring" request are the same as the process steps to review a "promotion/pay rise" request. What element should the BPM analyst use to map the activities needed for the review of the "hiring" request in Blueworks Live?

- A. A sub-process.
- B. A different color.
- C. A linked process.
- D. A separate milestone.

Correct Answer: C

QUESTION 7

A project manager asks a BPM analyst to assist with defining a business case for a company based on their goals and objectives. What are key components to include in support of a business case?

- A. 1. Establish critical success factors

2.

Identify Key Performance Indicators (KPIs)

3.

Identify business pain points

4.

Calculate Return on Investment

- B. 1. Establish critical success factors

2.

Complete Playback 1 retrospective notes

3.

Develop coaches from the future process

4.

Calculate Return on Investment

C. 1. Identify system integrations

2.

Run Process Optimizer Reports

3.

Identify business pain points

4.

Calculate user story points

D. 1. Complete Playback 1 retrospective notes

2.

Identify Key Performance Indicators (KPIs)

3.

Develop coaches from the future process

4.

Calculate user story points

Correct Answer: A

QUESTION 8

On a project, the BPM analyst defined the following to identify the Key Performance Indicator (KPI):

- The goal of the project was to improve the efficiency of the process.

-

The concern was that the process was not fast enough.

-

The Critical to Quality (CTQ) was the speed of the process.

-

The client was interested in the cycle time of the process.

- The time stamps at the beginning and at the end of the process are captured.

Which step did the BPM analyst fail to perform in identifying the KPI?

- A. Know the client objectives
- B. Know how to define the client's KPI
- C. Know the process decision makers
- D. Know the client's Service Level Agreements (SLAs)

Correct Answer: C

QUESTION 9

The project manager needs assistance from the BPM analyst in building a process roadmap. What tool should the BPM analyst use to create a detailed list of areas of opportunity?

- A. A Prioritization Matrix
- B. A Root Cause Analysis Matrix
- C. A Business Value Add Analysis Matrix
- D. A Failures Mode Effect Analysis (FMEA) Matrix

Correct Answer: A

QUESTION 10

A company needs to improve their hiring process using Business Process Management Software (BPMS). The BPM analyst has completed the current state process discovery and analysis by involving the business subject matter expert (SME) and is ready to define the future state process map. The BPM analyst anticipates many system integrations in the future state process. Who should the BPM analyst involve during the definition of the future state process?

- A. 1. Process Owner
 - 2. Business subject matter experts
 - 3. BPMS Lead Developer
 - 4. Client's IT representative
- B. 1. Project Manager
 - 2. Business subject matter experts

3.

BPMS Lead Developer

4.

Client's IT representative

C. 1. Process Owner

2.

Business subject matter experts

3.

BPMS Lead Developer

4.

Project Manager

D. 1. Process Owner

2.

Quality Assurance

3.

BPMS Lead Developer

4.

Client's IT representative

Correct Answer: A

[C9550-275 PDF Dumps](#)

[C9550-275 Study Guide](#)

[C9550-275 Exam Questions](#)