

C8060-218^{Q&As}

IBM Sterling B2B Integrator V5.2 Solution Implementation

Pass IBM C8060-218 Exam with 100% Guarantee

Free Download Real Questions & Answers **PDF** and **VCE** file from:

<https://www.certbus.com/c8060-218.html>

100% Passing Guarantee
100% Money Back Assurance

Following Questions and Answers are all new published by IBM Official Exam Center

- ⚙️ **Instant Download** After Purchase
- ⚙️ **100% Money Back** Guarantee
- ⚙️ **365 Days** Free Update
- ⚙️ **800,000+** Satisfied Customers



QUESTION 1

A developer uses a dynamic value in multiple Business Processes (BP) which can change between environments of IBM Sterling B2B Integrator (SBI) using sci-get-property. Which two methods could the developer use to reuse the same BP with different values in a different environment of SBI? (Choose two.)

- A. Add an entry into the /properties/sandbox.cfg and restart SBI.
- B. Create a customer properties file in /properties/ and run the Cache Refresh Service.
- C. Add an entry into /properties/customer_overrides.properties and use the Cache Refresh Service in a BP.
- D. Create a custom table and use a Lightweight JDBC adapter to retrieve the data and insert it into cache using the Cache Refresh Service.
- E. Use assign statements followed by the Cache Refresh Service in a BP which runs once at the startup of SBI and can then be used by other BP.

Correct Answer: BC

QUESTION 2

A client is experiencing failed Business Processes (BP) due to a resource group not having an active adapter available. Which menu path identifies the adapters that are disabled?

- A. Operations > Thread Monitor
- B. Operations > Support Tools > Support Case
- C. Deployment > Services > Configuration > List
- D. Deployment > Services > Installation > Setup

Correct Answer: C

QUESTION 3

A developer is implementing onFault logic into a Business Process (BP) for error handling. Given the following BPML code containing two onFaults:

```
<onFault code="No files to collect">  
  <assign name="Assign" to="Results">No Data To Collect</assign>  
</onFault>  
<onFault>  
  <assign name="Assign" to="Results">Second Fault</assign>  
</onFault>
```

How will the onFault execute for the error "XML failed validation"?

- A. Execute both faults.
- B. Execute neither fault.
- C. Execute the first fault.
- D. Execute the second fault.

Correct Answer: D

QUESTION 4

For increased availability reasons, a two-node application cluster has two servers in the DMZ. Each DMZ server has two network adapters. The system needs to be enabled to accept inbound FTP or FTP SSL client connections on port 25000 and 26000. A wildcard (*) is not used in the Perimeter Server. How many FTP Server adapters need to be configured to support ACTIVE and PASSIVE user initiated sessions?

- A. 2
- B. 4
- C. 8
- D. 16

Correct Answer: C

QUESTION 5

A company increased the number of CPUs allocated to IBM Sterling B2B Integrator (SBI). What should be done to take advantage of this increased processing capacity?

- A. Increase the Cache Size.
- B. Increase the Global Threads.
- C. Increase the Initial Heap Size.
- D. Add additional Perimeter Servers.

Correct Answer: B

QUESTION 6

A company has a new version of an active Business Process (BP). They would like to add the new .bp version from the Graphical Process Modeler (GPM) to IBM Sterling B2B Integrator (SBI) and have the new version run. Which steps need to be completed to use the new version?

- A. Check out existing version in Source Manger.Check-in new version.Set new version to default during check-in.
- B. Disable previous version.Check-in new version.Set new version to default in Execution Manager.

- C. Delete previous version.Check-in new version.Set new version to default in Execution Manager.
- D. Create a new Process Definition.Provide a new or varied name.Configure schedules and invokes to use new name.

Correct Answer: A

QUESTION 7

A customer is setting up a new EDI trading partner that uses the ASC X12 standard. The trading partner will be sending inbound purchase orders to the customer and expects to receive Functional Acknowledgments (ASC X12 997) transactions in return with Transaction Level acknowledgment detail. Where does the customer enable the outbound Functional Acknowledgments to the trading partner?

- A. Set level Inbound Document Envelope
- B. Group level Inbound Document Envelope
- C. Interchange level Inbound Document Envelope
- D. Parameter to X12Deenvelope service in the X12DeenvelopeUnified Business Process (BP)

Correct Answer: B

QUESTION 8

A company is planning to offer FTPS connection to its community of trading partners. They already have one server certificate in IBM Sterling B2B Integrator (SBI) that they want to use for the FTPS server in the production environment. In the

development environment they want to use a self-signed test certificate.

Where can the test certificate be created?

- A. Trading Partner > Digital Certificates > CA
- B. Trading Partner > Digital Certificates > Trusted
- C. Trading Partner > Digital Certificates > System
- D. Trading Partner > Digital Certificates > Cert Manager

Correct Answer: C

QUESTION 9

An information security department is trying to coordinate duties between various organization to increase security. What are three supported security features that will increase security? (Choose three.)

- A. FTP Client and Server Adapters for transmission
- B. authentication integrated with external certificate repositories

- C. support for AUTACK authentication messages for EDIFACT transactions
- D. Cyber Security Operations Center (CSOC) Comprehensive Cyber Threat Detection and Response
- E. Controlled Substances Ordering System (CSOS) to permit electronic transmission of orders for controlled substances
- F. Perimeter server, with a reverse proxy in the DMZ for managing protocols and ensuring firewall security from the outside

Correct Answer: BCF

QUESTION 10

A developer needs to export all versions of a Business Processes (BP). Which two formats can be selected within Resource Manager for exporting objects from IBM Sterling B2B Integrator (SBI)? (Choose two.)

- A. WAR File (.war)
- B. Install Bundle (.jar)
- C. Text Document (.txt)
- D. XML Document (.xml)
- E. Compressed file (.zip)

Correct Answer: BD

QUESTION 11

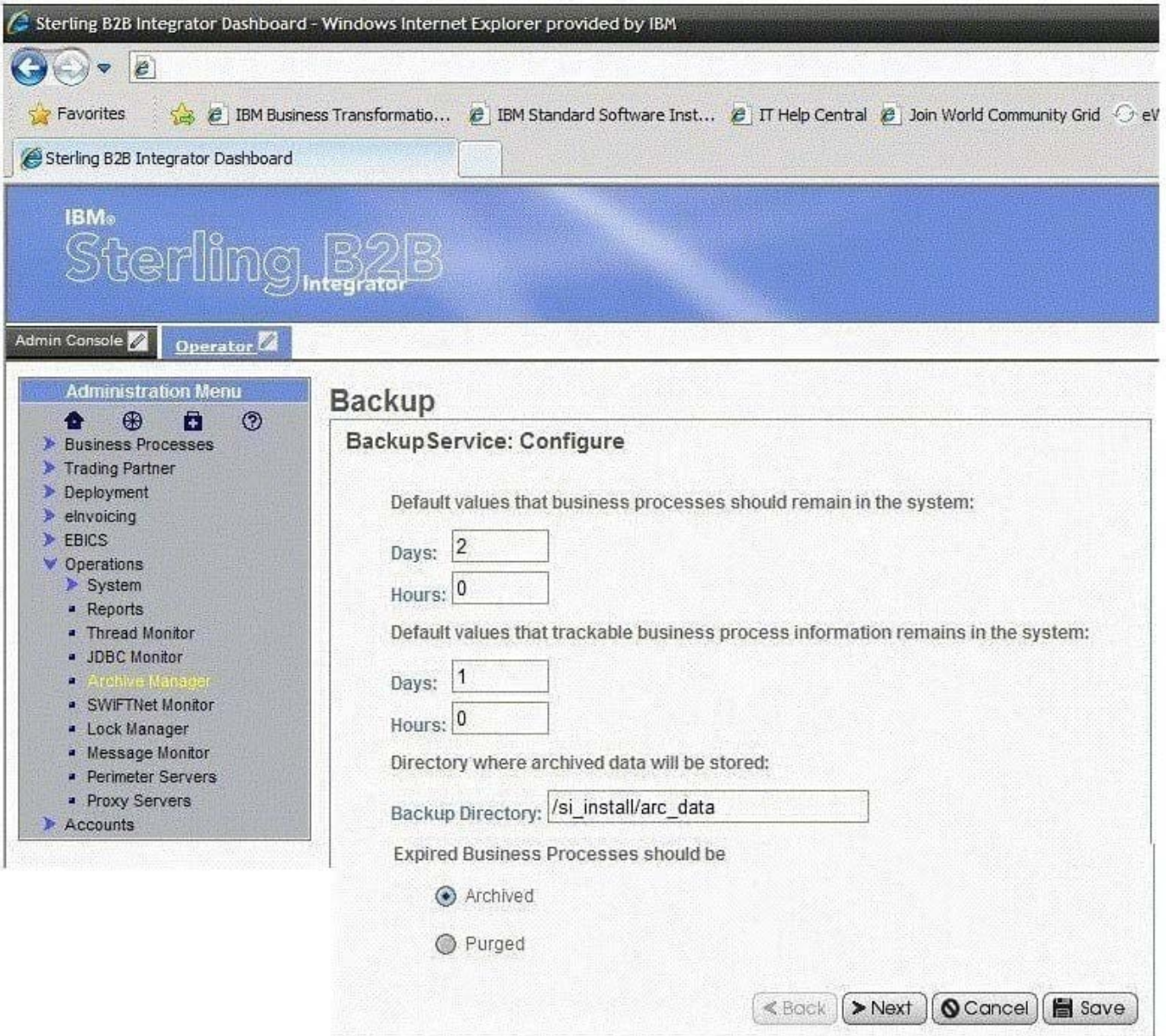
A Business Process (BP) implementer wants to use the Document Keyword Replace Service in the Graphical Process Modeler (GPM) but the service is not showing in the All Services stencil. What needs to be done to make the Document Keyword Replace Service show in the GPM?

- A. Update the license file.
- B. Create a service configuration.
- C. Execute `install3rdParty.sh/.cmd`.
- D. Add `JavaTask` to `adapters.properties`.

Correct Answer: B

QUESTION 12

Based on the screen shot, how many days will documents and other trackable data stay in the system by default?



- A. 1 dayA.1 day
- B. 2 daysB.2 days
- C. 3 daysC.3 days
- D. The setting is controlled at the individual Business Process (BP) level.D.The setting is controlled at the individual Business Process (BP) level.

Correct Answer: C

QUESTION 13

A system developer wants to change the tracking discovery level for some Business Processes (BP). The developer is doing this by changing the global tracking.discovery parameter in the doc_tracking.properties files from NONE to

MANDATORY. What are two side effects with this selected alternative? (Choose two.)

- A. It affects the tracking discovery level on all BP.
- B. It can have a serious impact on system performance.
- C. Customer override properties files will not override this.
- D. The doc_tracking.properties is generated from sandbox.cfg.
- E. The functionality will be changed in the future and doc_tracking.properties removed.

Correct Answer: AB

QUESTION 14

A company wants a Business Process (BP) to be triggered by the arrival of a file in a particular folder. Which adapter could be set to bootstrap when a file is found?

- A. File System
- B. FTP Client Get
- C. Lightweight JDBC
- D. Command Line Adapter 2

Correct Answer: A

QUESTION 15

A global persistence level is set to PERSISTENCE_NONE. Which Business Process (BP) persistence settings will result in more information being persisted?

- A. System Default
- B. Step Status Only
- C. Step Status - Engine May Override
- D. BP Start Stop - Engine May Override

Correct Answer: C

[Latest C8060-218 Dumps](#)

[C8060-218 VCE Dumps](#)

[C8060-218 Study Guide](#)