

AD0-E104^{Q&As}

Adobe Experience Manager Architect

Pass Adobe AD0-E104 Exam with 100% Guarantee

Free Download Real Questions & Answers **PDF** and **VCE** file from:

<https://www.certbus.com/ad0-e104.html>

100% Passing Guarantee
100% Money Back Assurance

Following Questions and Answers are all new published by Adobe
Official Exam Center

-  **Instant Download** After Purchase
-  **100% Money Back** Guarantee
-  **365 Days** Free Update
-  **800,000+** Satisfied Customers



QUESTION 1

A news agency editor wants to publish news articles to an intermediate Publish (preview) instance for internal review before publishing the article to production Publish instance.

Which two steps should the Architect recommend? (Choose two.)

- A. Create a separate live copy to preview content
- B. Set up a new replication agent for preview server
- C. Create a closed user group (CUG) for editors
- D. Create a custom publish workflow
- E. Create a reverse replication agent on preview server

Correct Answer: AB

QUESTION 2

Which method should be used to extend an existing AEM component for 6.2 and above?

- A. Use Sling Resource Merger to cross define the structures required
- B. Add new dialog boxes and code to the original component
- C. Copy the entire component structure from libs to apps and make changes
- D. Modify the Sling Resource Type on the original component

Correct Answer: A

QUESTION 3

A client needs to roll back published pages to a previous version in instances where content errors were uncovered. Previous versions of every published page should be made available for the authors to roll back if needed.

Which solution should an Architect recommend?

- A. Create editable template to autosave page versioning
- B. Modify the Page Activation workflow to include a versioning step
- C. Restore individual page versions from the AEM backup file
- D. Update the dispatcher.any file to force versioning of all pages

Correct Answer: B

QUESTION 4

A customer has a website with 10,000 pages and wants to improve performance. Which option should be used?

- A. Advise to use URL parameters instead of sling selectors
- B. Increase .stat file level from the default
- C. Decrease .stat file level from the default
- D. Specify a wildcard allow rule in the invalidate section

Correct Answer: D

QUESTION 5

Which format can content services export to out of the box (OOTB)?

- A. CSV
- B. HTML
- C. TEXT
- D. JSON

Correct Answer: D

Reference: <https://helpx.adobe.com/cz/experience-manager/6-4/mobile/using/rendering-and-delivery.html>

QUESTION 6

Which dispatcher configuration can prevent unauthorized calls to clear the cache?

- A. /allowAuthorized
- B. /sessionmanagement
- C. /secure
- D. /allowedClients

Correct Answer: A

Reference: <https://docs.adobe.com/content/help/en/experience-manager-dispatcher/using/configuring/dispatcher-configuration.html>

QUESTION 7

A client states they will have approximately 1 million page views per month with approximately 30% of the traffic being Authenticated/Secure content. The Architect is recommending two Publish servers and a single Dispatcher.

What is the purpose of the Dispatcher in this scenario?

- A. Serves as document repository and caching mechanism
- B. Serves as Load Balancer and caching mechanism for non-secure content
- C. Serves as Load Balancer only
- D. Caches Authenticated/Secure content and serves as Load Balancer

Correct Answer: D

QUESTION 8

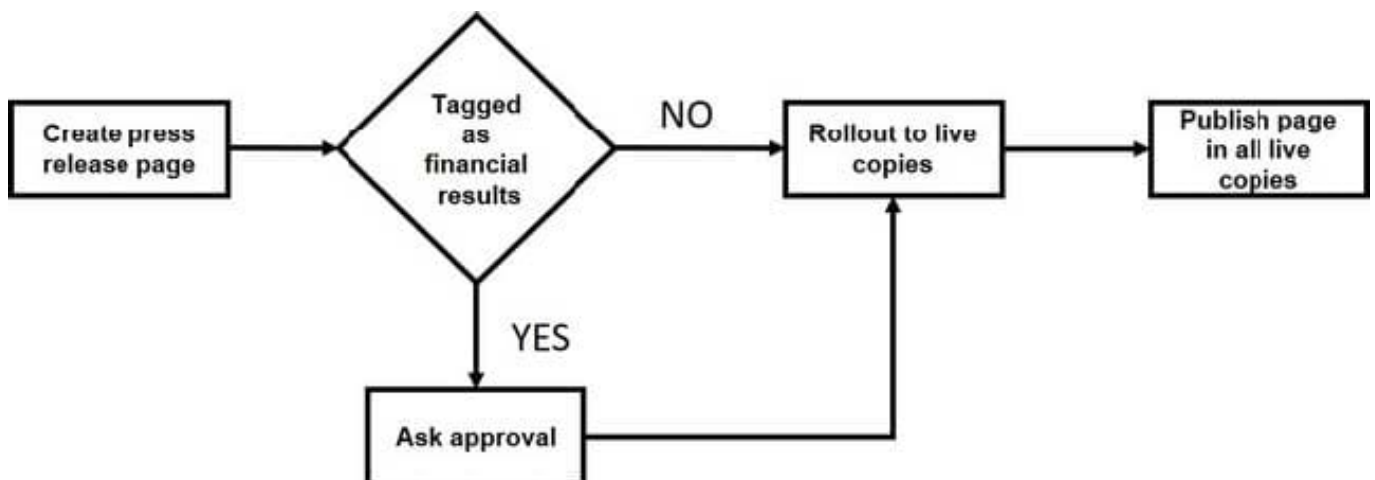
In which two situations should JCR queries be used? (Choose two.)

- A. to render multiple components on a page
- B. to render page navigation
- C. to get ordered results
- D. to perform full-text searches
- E. to display the title of the current page

Correct Answer: AC

QUESTION 9

A customer to simplify and automate publishing press release pages and defines the following flow:



What should the Architect recommend?

- A. Configure MSM with the "Activate on Blueprint activation" option
- B. Create a custom workflow launches
- C. Advise the customer to use Launches
- D. Implement a Sling event listener that triggers on page creation

Correct Answer: B

QUESTION 10

A client is in the discovery process for building a React native app, which is a single codebase that runs natively on iOS and Android. The goal is to reduce development costs. The client wants to reduce content creation costs in the new react Native app by reusing as much of the marketing content already published in their AEM instance.

What should the Architect recommend to meet this requirement?

- A. Content Fragments
- B. Sling Resource Resolution
- C. Experience Fragments
- D. OSGi Bundles

Correct Answer: A

QUESTION 11

An author makes changes to a page. The old version still appears on the site. The Author needs to troubleshoot by bypassing the Dispatcher and accessing the AEM page directly through the Publish instance.

What should the author do?

- A. Modify the AEM Job Processing OSGI configuration
- B. Adjust the allowedClients of the dispatcher
- C. Use CURL to do a manual dispatcher flush
- D. Add a query parameter to the page URL

Correct Answer: D

QUESTION 12

After running the pattern detector in AEM, an error message appears on a component: Cross-boundary resource type usage of internal marked path.

How should the Architect resolve this issue?

- A. Replace the component with components that are public
- B. Adjust the policy settings on the component
- C. Remove the sling:resourceSuperType from the component
- D. Apply the latest hotfix

Correct Answer: A

Reference: <https://docs.adobe.com/content/help/en/experience-manager-64/deploying/upgrading/patterndetector.html>

QUESTION 13

A customer has a limited number of authors and plans a multi-regional deployment architecture. The customer has the following requirements:

High performance for regional end users
Flexibility to scale performance horizontally as needed
High availability and failover switch

Which installation should the Architect suggest?

- A. TarMK with Cold Standby
- B. Single author instance with TarMK farm
- C. MongoMK with Cold Standby
- D. Farm of one-to-one mapping of single author instance with single publisher instance

Correct Answer: C

Reference: <https://helpx.adobe.com/experience-manager/6-5/sites/deploying/using/recommendeddeploys.html>

QUESTION 14

A content author creates an article page in AEM. A notification must be sent to a third-party system.

An Architect needs to make sure there are multiple attempts to deliver the notification in the event the third-party system is temporarily unavailable.

How should the Architect meet this requirement?

- A. Sling Pipes
- B. Sling Jobs

C. Event Handlers

D. Event Listeners

Correct Answer: C

QUESTION 15

How should OSGI configurations be deployed in AEM?

A. As an XML file

B. As text files

C. Using the OSGI config console

D. As a package

Correct Answer: D

[AD0-E104 VCE Dumps](#)

[AD0-E104 Study Guide](#)

[AD0-E104 Braindumps](#)