

100% Money Back
Guarantee

Vendor: IBM

Exam Code: A2090-541

Exam Name: Assessment: DB2 9.7 DBA for LUW-
Assessment

Version: Demo

Question No : 1

Given the DDL shown below:

```
CREATE TABLE tab1 (coll SMALLINT );
```

```
CREATE VIEW v1 AS SELECT coll FROM tab1 WHERE coll > 25 ;
```

```
CREATE VIEW V2 AS SELECT COI1 FROM v1 WITH CASCADED CHECK
```

```
OPTION
```

```
CREATE VIEW v3 AS SELECT coll FROM v2 WHERE coll < 100 ;
```

Which statement will fail?

- A. INSERT INTO v2 VALUES (35)
- B. INSERT INTO v1 VALUES (5)
- C. INSERT INTO v3 VALUES (25)
- D. INSERT INTO v3 VALUES (200)

Answer: C

Explanation:

Question No : 2

Click the Exhibit button

Given the INSERT statements shown below:

```
INSERT INTO applicant VALUES (1 , 'M' 54);
```

```
INSERT INTO applicant VALUES (2, 'F', 38);
```

```
INSERT INTO applicant VALUES (3, 'M', 21);
```

```
INSERT INTO applicant VALUES (4, 'F', 91);
```

```
INSERT INTO applicant VALUES (5, 'C', 50);
```

```
INSERT INTO applicant VALUES (6, 'C', 70);
```

INSERT INTO applicant VALUES (7, 'C', 95);

How many rows will be successfully inserted?

- A. 1
- B. 3
- C. 5
- D. 7

Answer: C

Explanation:

Question No : 3

Which statement is correct about informational constraints?

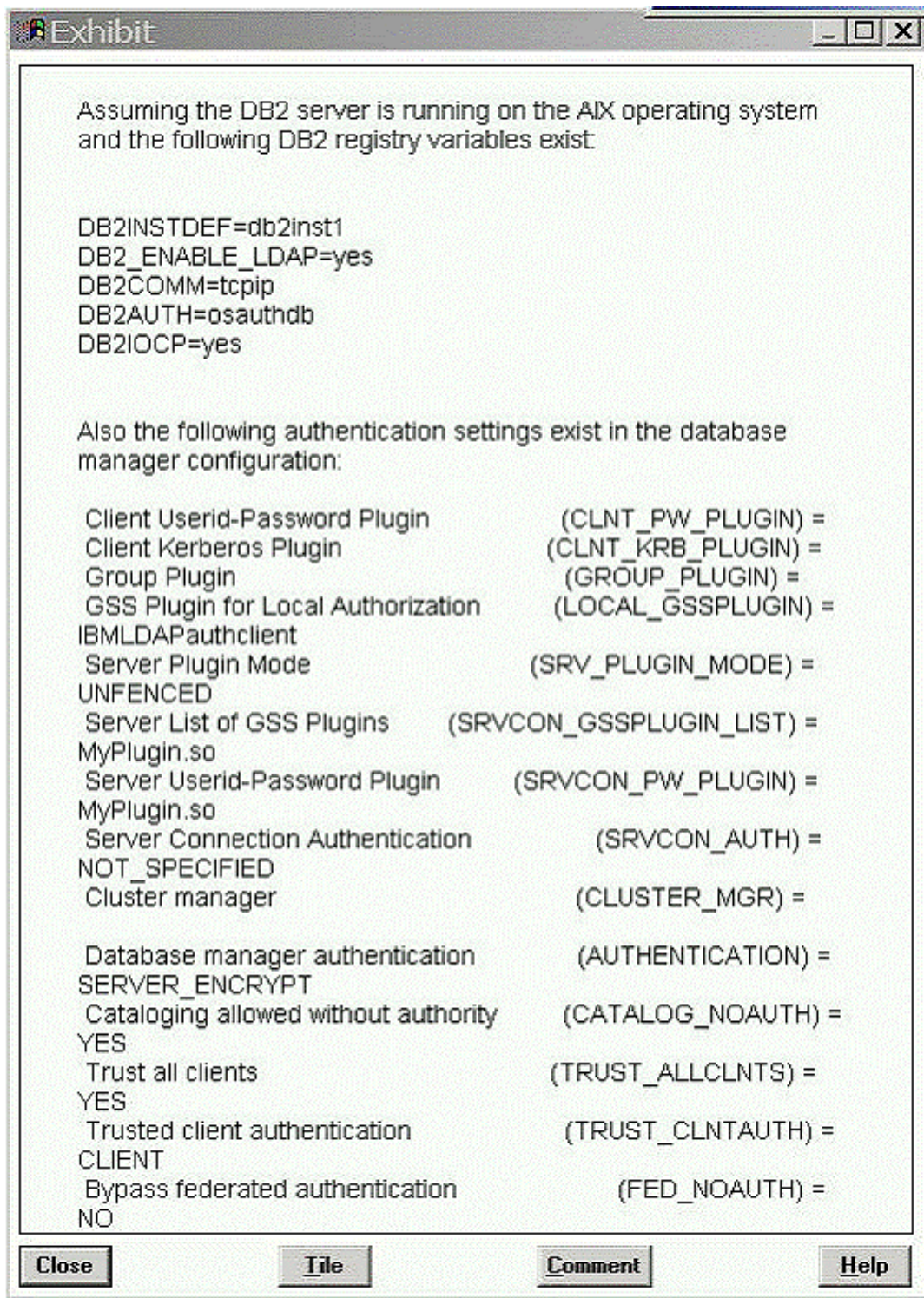
- A. An informational constraint can be used by the SQL compiler to improve the access to data and query performance.
- B. The database manager uses an informational constraint to enforce the uniqueness of the key during changes to the columns of the unique constraint.
- C. An informational constraint is a column or combination of columns that has the same properties as a unique constraint.
- D. An informational constraint specifies that every row that is inserted or updated in the table must conform to the definition of the table.

Answer: A

Explanation:

Question No : 4

Click the Exhibit button.



In the exhibit, where would the authentication of the supplied userid and password from a remote client take place?

- A. AIX operating system
- B. LDAP Server
- C. Kerberos Server
- D. "MyPlugin.so" GSS-API plug-in

Answer: B

Explanation:

Question No : 5

Which two plug-in types does the DB2 database system provide? (Choose two.)

- A. Group retrieval
- B. Kerberos authentication
- C. Server authentication
- D. Encryption authentication

Answer: A,C

Explanation:

Question No : 6

What are three authorization categories in DB2? (Choose three.)

- A. System-level
- B. Database-level
- C. Network-level
- D. Object-level
- E. Instance-level

Answer: A,B,D

Explanation:

Question No : 7

What are three system and database level authorizations available with DB2? (Choose three.)

- A. SYSMON

-
- B. SYSMNT
 - C. DBCTRL
 - D. SYS ADM
 - E. DBADM

Answer: A,D,E

Explanation:

Question No : 8

A DBA wants to use Label Based Access Control (LBAC) to protect Individual rows in a table. Which data type must be used to create a column to hold the necessary LBAC security data?

- A. SYSPROC.DB2LBACU\BEL
- B. SYSPROC.DB2SECURITYU\BEL
- C. SYSIBM.DB2LBACLABEL
- D. SYSIBM.DB2SECURITYLABEL

Answer: D

Explanation:

Question No : 9

Which administrative authority is needed to run the audit stored procedures and table functions such as the AUDIT_DELIM_EXTRACT stored procedure?

- A. DBADM
- B. SECADM
- C. SQLADM
- D. SYS ADM

Answer: B

Explanation:

Question No : 10

How does the DB2 Server identify the list of GSS-API plug-ins it supports?

- A. by using the SRVCON_GSSPLUGIN_LIST database manager configuration parameter
- B. by using the SRVCON_GSSPLUGIN_LIST registry variable
- C. by using the SRVSUPP_GSSPLUGIN_LIST database manager configuration parameter
- D. by using the SRVSUPP_GSSPLUGIN_LIST registry variable

Answer: A

Explanation:

Question No : 11

BOB and ALICE moved from the DEVELOPER group to the ANALYST group.

As the security administrator, which two commands would remove Bob and Alice from the DEVELOPER group? (Choose two.)

- A. REVOKE ROLE developer FROM bob, alice
- B. REVOKE GROUP developer FROM bob, alice
- C. REVOKE ROLE developer FROM USER bob, USER alice
- D. REVOKE GROUP developer FROM USER bob, USER alice

Answer: A,C

Explanation:

Question No : 12

Because of an application abend, a database named

PAYROLL needs to be restored to approximately 9:26 am on June 1, 2009. After the database is restored from a backup image, the command shown below is executed:

```
ROLLFORWARD DATABASE payroll TO 2009-06-01-09.26.44.609002
```

```
USING LOCAL TIME AND STOP
```

When this command is executed, the error shown below is generated:

SQL4970N Roll-forward recovery on database "PAYROLL" cannot reach the specified stop point (end-of-log or point-in-time) because of missing log file(s) on node(s) "0".

Which two commands could be used to resolve this error? (Choose two.)

- A. ROLLFORWARD DATABASE payroll TO END OF LOGS AND STOP
- B. ROLLFORWARD DATABASE payroll TO 2009-06-01-09.26.44.609002 USING UTC TIME AND STOP
- C. ROLLFORWARD DATABASE payroll TO 2009-06-01-09.26.44.609002 USING LOCAL TIME AND STOP OVERFLOW LOG PATH /mnt/arclog
- D. ROLLFORWARD DATABASE payroll TO 2009-06-01-09.26.44.609002 USING UTC TIME AND STOP NORETRIEVE MISSING RECORDS

Answer: A,C

Explanation:

Question No : 13

Which two can be replicated using HADR? (Choose two.)

- A. database configuration changes
- B. CREATE TABLE... NOT LOGGED INITIALLY operations
- C. Data Definition Language (DDL) statements
- D. LOAD operations

Answer: C,D

Explanation:

Question No : 14

Which set of procedures will be required to perform a rolling upgrade in a HADR environment?

- A. 1. Upgrade the system where the primary database resides.
2. Issue the TAKEOVER HADR command on the primary database server.

-
3. Upgrade the original primary database.
 4. Return to the original configuration by switching the roles of the primary and standby databases.
- B.**
1. Upgrade the system where the standby database resides.
 2. Issue the TAKEOVER HADR command on the primary database server.
 3. Upgrade the original primary database.
 4. Return to the original configuration by switching the roles of the primary and standby databases.
- C.**
1. Upgrade the system where the primary database resides.
 2. Issue the TAKEOVER HADR command on the primary database server.
 3. Upgrade the new primary database.
 4. Return to the original configuration by switching the roles of the primary and standby databases.
- D.**
1. Upgrade the system where the standby database resides.
 2. Issue the TAKEOVER HADR command on the standby database server.
 3. Upgrade the original primary database.
 4. Return to the original configuration by switching the roles of the primary and standby databases.

Answer: D

Explanation:

Question No : 15

Which HADR feature minimizes the impact of software maintenance on the Standby server?

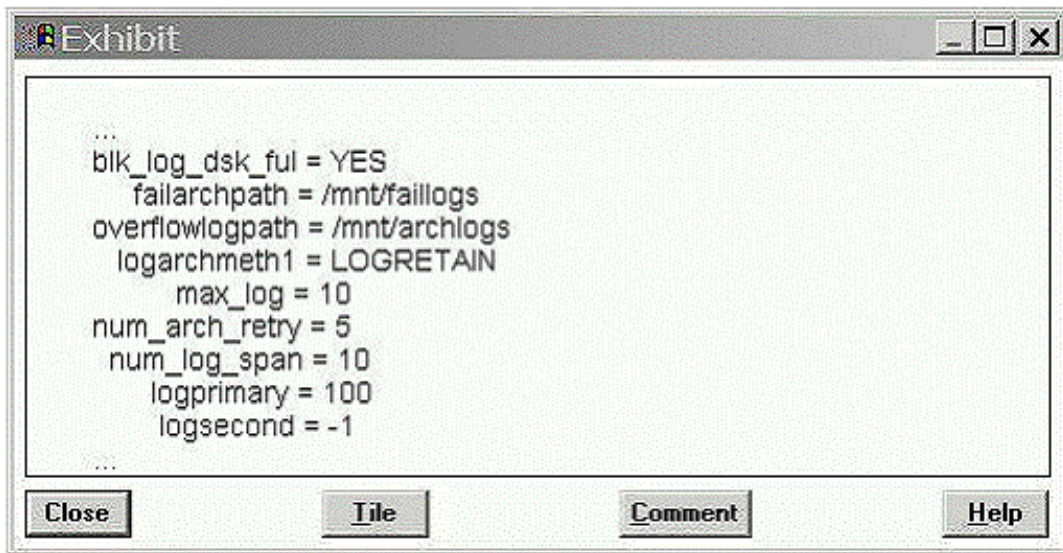
- A. Configure all AUTOMATIC features.
- B. Configure all AUTOMATIC maintenance parameters.
- C. Configure AUTOMATIC maintenance and perform a rolling upgrade
- D. Configure AUTOMATIC maintenance and perform a roll forward.

Answer: C

Explanation:

Question No : 16

Click the Exhibit button.



Refer to the logging configuration parameters shown in the exhibit.

What will happen if there are currently 100 active log files and DB2 needs to create log file 101?

- A. At least one application will receive a "log full" error and at least one transaction will be rolled back because the active log space is full.
- B. Log file 101 will go into the OVERFLOWLOGPATH directory since the active log space is full and infinite logging has been enabled.
- C. The database will appear to be hung since the active log space is full and the BLK_LOG_DSK_FUL parameter is set to YES.
- D. Log file 101 will be successfully created in the primary log path since infinite logging has been enabled. Applications will continue processing normally.

Answer: D

Explanation:

Question No : 17

A database administrator takes a full backup of the PRODUCTS database every Sunday. During the week, two other backups are taken, one on Tuesday and one on Thursday. The PRODUCTS database is about 800 GB in size, and about 20 percent of the data is modified throughout a week. Assuming that backup times need to be kept to a minimum, which command should be used to produce the Tuesday and Thursday backup images?

- A. BACKUP DATABASE products TO /mnt/backup

-
- B. BACKUP DATABASE products INCREMENTAL TO /mnt/backup
 - C. BACKUP DATABASE products TO /mnt/backup UTIL_IMPACT_PRIORITY 10
 - D. BACKUP DATABASE products INCREMENTAL DELTA TO /mnt/backup

Answer: D

Explanation:

Question No : 18

A database named PAYROLL was backed up on Sunday. On Tuesday, a table space in the PAYROLL database was renamed from TBSP1 to EMPINFO_TBSP. On Thursday, the database was restored from the backup image created on Sunday. Which command must be issued to roll the renamed table space forward to the current date and time?

- A. ROLLFORWARD DATABASE payroll TO END OF LOGS AND STOP TABLESPACE(tbsp1)
- B. ROLLFORWARD DATABASE payroll TO END OF LOGS AND STOP TABLESPACE(empinfo_tbsp)
- C. ROLLFORWARD DATABASE payroll TO END OF LOGS AND STOP TABLESPACE(tbsp 1 TO empinfo_tbsp)
- D. ROLLFORWARD DATABASE payroll TO END OF LOGS AND STOP TABLESPACE(tbsp 1 RENAME empinfo_tbsp)

Answer: B

Explanation:

Question No : 19

Due to an application error, some data was deleted from a very large table residing in table space

TS1. The table space was then renamed TS2 before the error was detected. Rather than try and rebuild this table, it was decided that database DB1 would be restored and then rolled forward to a point-in-time (PIT) before the delete operation took place. Unfortunately the PiT roll forward was done to a time that was too early and some critical transactions were missing when the database was brought back on-line. Which steps must be taken to ensure that the critical transactions which are currently missing from the database are

correctly applied to the database and that table space TS1 is renamed TS2?

- A.** 1. Restore database DB1.
2. Roll forward to the correct point-in-time.
3. Rename TS1 to TS2.
- B.** 1. Restore table space TS1 from the DB1 backup image.
2. Roll forward to the correct point-in-time.
3. Rename table space TS1 to TS2.
4. Re-run the batch processes.
- C.** 1, Restore database DB1
2. Roll forward to end of logs.
- D.** 1. Restore table space TS1 from the DB1 backup image.
2. Roll forward to end of logs.

Answer: A

Explanation:

Question No : 20

If a non-recoverable database crashes, how can a DBA successfully restart the database if a table space is damaged and cannot complete crash recovery?

- A.** The database must be restarted using the RESTART DATABASE command with the DROP PENDING TABLESPACES option specified. At that point, the database can be brought on-line and the damaged table space must be dropped and re-created.
- B.** The damaged table space must be restored from the latest backup and any active transaction logs in the log path can then be applied to it using the TABLESPACE ONLINE option of the ROLLFORWARD DATABASE command. This will bring the table space on-line and synchronize it with the rest of the database.
- C.** The damaged table space must be restored from the latest backup image. Once restored from the backup image, the RESTART DATABASE command can be issued to apply all the relevant transactions from the active logs. At that point, the database will come on-line and all table spaces will be synchronized.
- D.** The damaged table space will require that the entire database be restored from the latest backup image because the database is non-recoverable and will not be accessible.

Answer: A

Explanation:

Question No : 21

A database administrator created a new database from an existing full database backup image. If the original database resided on a 64-bit AIX server and the new database was created on a different 64-bit AIX server, which two statements are correct? (Choose two.)

- A. Existing SQL procedures must be dropped and re-created in the new database before they can be used
- B. Existing packages will be copied to the new database and can be used immediately.
- C. Incremental backups are not allowed until a non-incremental backup is taken.
- D. Incremental backup images for the original database can be used to restore the new database.

Answer: A,C

Explanation:

Question No : 22

Which statement is correct when describing the AUTOCONFIGURE command?

- A. It calculates and displays initial values for the database manager configuration parameters and database configuration parameters for a single database, with the option of applying these values.
- B. It calculates and displays initial values for buffer pool sizes, the database manager configuration parameters, and database configuration parameters for a single database, with the option of applying these values.
- C. It calculates and displays initial values for buffer pool sizes, the database manager configuration parameters, and database configuration parameters for all databases within an instance, with the option of applying these values.
- D. It calculates and displays initial values for the database manager configuration parameters and database configuration parameters for all databases within an instance, with the option of applying these values.

Answer: B

Explanation:

Question No : 23

How do you turn on Self-Tuning Memory Manager (STMM)?

- A. UPDATE DB CFG FOR <database> USING SELF_TUNING_MEM ON
- B. db2set SELF_TUNING_MEM=ON
- C. UPDATE DB CFG FOR <database> USING AUTOMATIC_MEMORY ON
- D. db2set AUTOMATIC_MEMORY=ON

Answer: A

Explanation:

Question No : 24

Which group of memory consumers can be adjusted by the Self-Tuning Memory Manager (STMM)?

- A. buffer pools, lock memory, sort memory, package cache
- B. buffer pools, utility heap, sort memory, package cache
- C. buffer pools, database heap, utility heap, lock memory
- D. buffer pools, database heap, utility heap, package cache

Answer: A

Explanation:

Question No : 25

You have a job scheduled to run every Saturday; the scheduler is turned off on Friday and then restarted on Monday. The job scheduled for Saturday is now a job that is scheduled in the past. Which configuration parameters will allow your Saturday job to run when the scheduler is restarted?

- A. AUTORESTART=NO
SCHED_ENABLE=ON
- B. EXEC_EXP_TASK=NO
SCHED_ENABLE=ON
- C. AUTORESTART=YES
SCHED_ENABLE=ON
- D. EXEC_EXP_TASK=YES
SCHED_ENABLE=ON

Answer: D

Explanation:

Question No : 26

You have a UTIL_IMPACT_LIM of 50 and a UTIL_IMPACT_PRIORITY of 60 for the backup utility. What are the maximum amount of system resources that the backup utility can use?

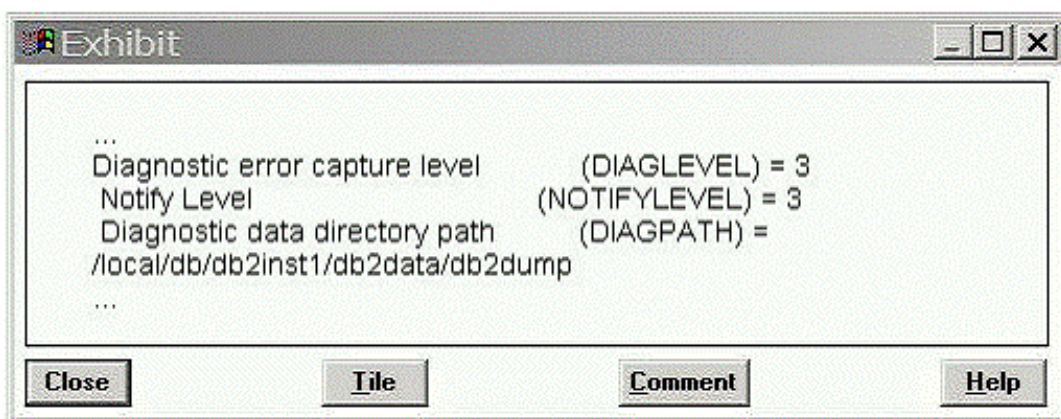
- A. 30%
- B. 40%
- C. 50%
- D. 60%

Answer: A

Explanation:

Question No : 27

Click the Exhibit button.



Refer to the GET DB CFG output shown in the exhibit Where can the db2diag.log file be found?

- A. /local/db/db2inst1 /sqllib/db2dump
- B. /home/db2inst1 Zdb2inst1 /sqllib/db2durnp

-
- C. /home/db2inst1 Zdb2inst1 /db2dump
 - D. /local/db/db2inst1 /db2data/db2durnp

Answer: D

Explanation:

Question No : 28

Scheduled tasks are executed by the DB2 autonomic computing daemon (db2acd). Every five minutes the daemon checks for new or updated tasks. If a task is scheduled to run every five minutes and for some reason, the task takes seven minutes to complete, the daemon will not execute another instance of the task at the next 5 minute interval. Which minute mark will allow the next task to run?

- A. 5
- B. 10
- C. 17
- D. 22

Answer: B

Explanation:

Question No : 29

When using SQU and JDBC applications to connect to the host DB2 database, which software license must be registered?

- A. IBM Data Server Driver for JDBC and SQU
- B. DB2 Connect
- C. DB2 ESE
- D. DB2WSE

Answer: B

Explanation:

Question No : 30

You are unable to configure a data source using DB2 Discovery. What are three reasons why this is happening? (Choose three.)

- A. The database has not been cataloged.
- B. A network failure exists between the control center client and the database
- C. The DISCOVER_DB parameter is disabled.
- D. The database does not exist.
- E. The DISCOVERJNST parameter is enabled.

Answer: B,C,D

Explanation:

Question No : 31

What are two valid protocols that can be used with the CATALOG NODE command to establish communication with a server named SERVER1? (Choose two.)

- A. token ring
- B. named pipe
- C. NetBIOS
- D. IPv6

Answer: B,D

Explanation:

Question No : 32

What will collect information about dynamic and static SQL statements?

- A. MON_GET_PKG_CACHE_STMT table function
- B. SNAP_GET_DYN_SQL table function
- C. SNAPDYN_SOL administrative view
- D. MON GET WORKLOAD table function

Answer: A

Explanation:

Question No : 33

What are two purposes of the db2mtrk command? (Choose two.)

- A. to view available memory on the system
- B. to view memory usage for all process currently on the system
- C. to view application memory usage
- D. to view the amount of database memory allocated to the buffer pools

Answer: C,D

Explanation:

Question No : 34

Which two tasks can DB2 Workload Management do? (Choose two.)

- A. Audit users, who did what and when.
- B. Automatically change DB2 dbm and db configuration.
- C. Limit the number of disruptive database activities that can run concurrently
- D. Stop the execution of activities that exceed defined boundaries.

Answer: C,D

Explanation:

Question No : 35

The event monitor for transactions has been replaced in DB2 9.7 with which tool?

- A. MON_GET_ACTIVITY_DETAILS table function
- B. MON_GET_WORKLOAD table function
- C. db2top
- D. db2evmonfmt

Answer: B

Explanation:

Question No : 36

Which two DB2 commands are used to extract, format, and present diagnostic information?

(Choose two.)

- A. db2diag
- B. db2dart
- C. db2exfmt
- D. db2xpvt

Answer: A,B

Explanation:

Question No : 37

Which two SQL statements are explainable statements? (Choose two.)

- A. FETCH
- B. INSERT
- C. CALL
- D. VALUES

Answer: B,D

Explanation:

Question No : 38

Which method may be used to collect deadlock information in DB2 9.7?

- A. DEADLOCKS event monitor
- B. DB2DETAILDEADLOCK event monitor
- C. LOCKING event monitor
- D. DB2_CAPTURE_LOCKTIMEOUT registry variable

Answer: C

Explanation:

Question No : 39

Which DB2 monitoring tool command can collect data on databases, sessions, buffer pools, tables, and dynamic SQL?

- A. db2dart
- B. db2fodc
- C. db2top
- D. db2pm

Answer: C

Explanation:

Question No : 40

Which three types of work can be defined for a Workload Management service class set?

(Choose three.)

- A. Read
- B. Write
- C. Delete
- D. Load
- E. Unload

Answer: A,B,D

Explanation:

Question No : 41

A file named db2advise.in contains the text shown below:

```
--#SET FREQUENCY 100
```

```
SELECT COUNT(*) FROM employee;
```

```
SELECT * FROM employee WHERE lastname='HAAS';
```

What does the line `--#SET FREQUENCY 100` convey when this file is used as input for the Design Advisor?

- A. Executes the first SQL statement in the workload file 100 times.
- B. Executes up to 100 combinations of optimizations for both SQL statements in the workload file
- C. Executes both SQL statements in the workload file 100 times.
- D. Executes an index analysis for the first SQL statement in the workload file 100 times.

Answer: C

Explanation:

Question No : 42

Which two actions can you perform when using Optim Database Administrator?

(Choose two.)

- A. Schedule changes for DPF objects or configurations.
- B. Synchronize, copy, or merge database schema definitions between DB2 Data Servers.
- C. Schedule delta online backups and reorgs for different days of the week.
- D. Integrate remote DB2 Command execution, such as utilities, application binding and rebinding, and data loading and unloading

Answer: B,D

Explanation:

Question No : 43

You are running a LOAD utility and have not provided an exception table. What will happen if duplicates for a unique key get inserted during the LOAD phase due to duplicates in the input file?

-
- A. LOAD will eliminate the duplicate rows from the table and give a warning message.
 - B. LOAD will fail and generate an error message.
 - C. LOAD will create the exception table.
 - D. LOAD will complete but the table being loaded will be placed in SET INTEGRITY PENDING state

Answer: A

Explanation:

Question No : 44

Table TAB_A is already populated with a large number of rows, and you wish to insert more rows from a file named data.del. While these rows are added, you want users to still have full access to the table in read/write mode. Which command should you use to do this?

- A. IMPORT FROM data.del OF DEL INSERT INTO tab_a
- B. IMPORT FROM data.del OF DEL INSERT INTO tab_a ALLOW WRITE ACCESS
- C. LOAD FROM data.del OF DEL INSERT INTO tab_a
- D. LOAD FROM data.del OF DEL INSERT INTO tab a ALLOW WRITE ACCESS

Answer: A

Explanation:

Question No : 45

Which command will reorg all indexes for a table named TABA?

- A. REORG TABLE taba INDEXES INPLACE
- B. REORG TABLE taba AND INDEXES ALL
- C. REORG INDEXES FOR taba
- D. REORG INDEXES ALL FOR TABLE taba

Answer: D

Explanation:

Question No : 46

When are packages automatically rebound?

- A. When invalid packages are executed.
- B. When inoperative packages are executed.
- C. When the DB2_AUTO_REBIND configuration parameter is set to ENABLED
- D. When the DB2_AUTO_REBIND registry variable is set to YES.

Answer: A

Explanation:

Question No : 47

A file named db2advise.in contains the following text:

```
##SET FREQUENCY 100  
  
SELECT COUNTO FROM employee;  
  
SELECT AVG(bonus), AVG(salary) FROM employee  
  
GROUP BY workdept ORDER BY workdept;
```

Which command will cause the Design Advisor to make recommendations for a database named SAMPLE, using the information found in this file?

- A. db2advise -d sample -f
- B. db2advise -d sample -i db2advise.in
- C. db2advise -d sample -g
- D. db2advise -d sample -f db2advise.in

Answer: B

Explanation:

Question No : 48

To Read the [Whole Q&As](#), please purchase the [Complete Version](#) from [Our website](#).

Trying our product !

- ★ **100%** Guaranteed Success
- ★ **100%** Money Back Guarantee
- ★ **365 Days** Free Update
- ★ **Instant Download** After Purchase
- ★ **24x7** Customer Support
- ★ Average **99.9%** Success Rate
- ★ More than **69,000** Satisfied Customers Worldwide
- ★ Multi-Platform capabilities - **Windows, Mac, Android, iPhone, iPod, iPad, Kindle**

Need Help

Please provide as much detail as possible so we can best assist you.

To update a previously submitted ticket:



 One Year Free Update <p>Free update is available within One Year after your purchase. After One Year, you will get 50% discounts for updating. And we are proud to boast a 24/7 efficient Customer Support system via Email.</p>	 Money Back Guarantee <p>To ensure that you are spending on quality products, we provide 100% money back guarantee for 30 days from the date of purchase.</p>	 Security & Privacy <p>We respect customer privacy. We use McAfee's security service to provide you with utmost security for your personal information & peace of mind.</p>
---	---	--

[Guarantee & Policy](#) | [Privacy & Policy](#) | [Terms & Conditions](#)

Any charges made through this site will appear as Global Simulators Limited.

All trademarks are the property of their respective owners.

Copyright © 2004-2015, All Rights Reserved.