

A00-270^{Q&As}

SAS BI Content Development

Pass SASInstitute A00-270 Exam with 100% Guarantee

Free Download Real Questions & Answers **PDF** and **VCE** file from:

<https://www.certbus.com/a00-270.html>

100% Passing Guarantee
100% Money Back Assurance

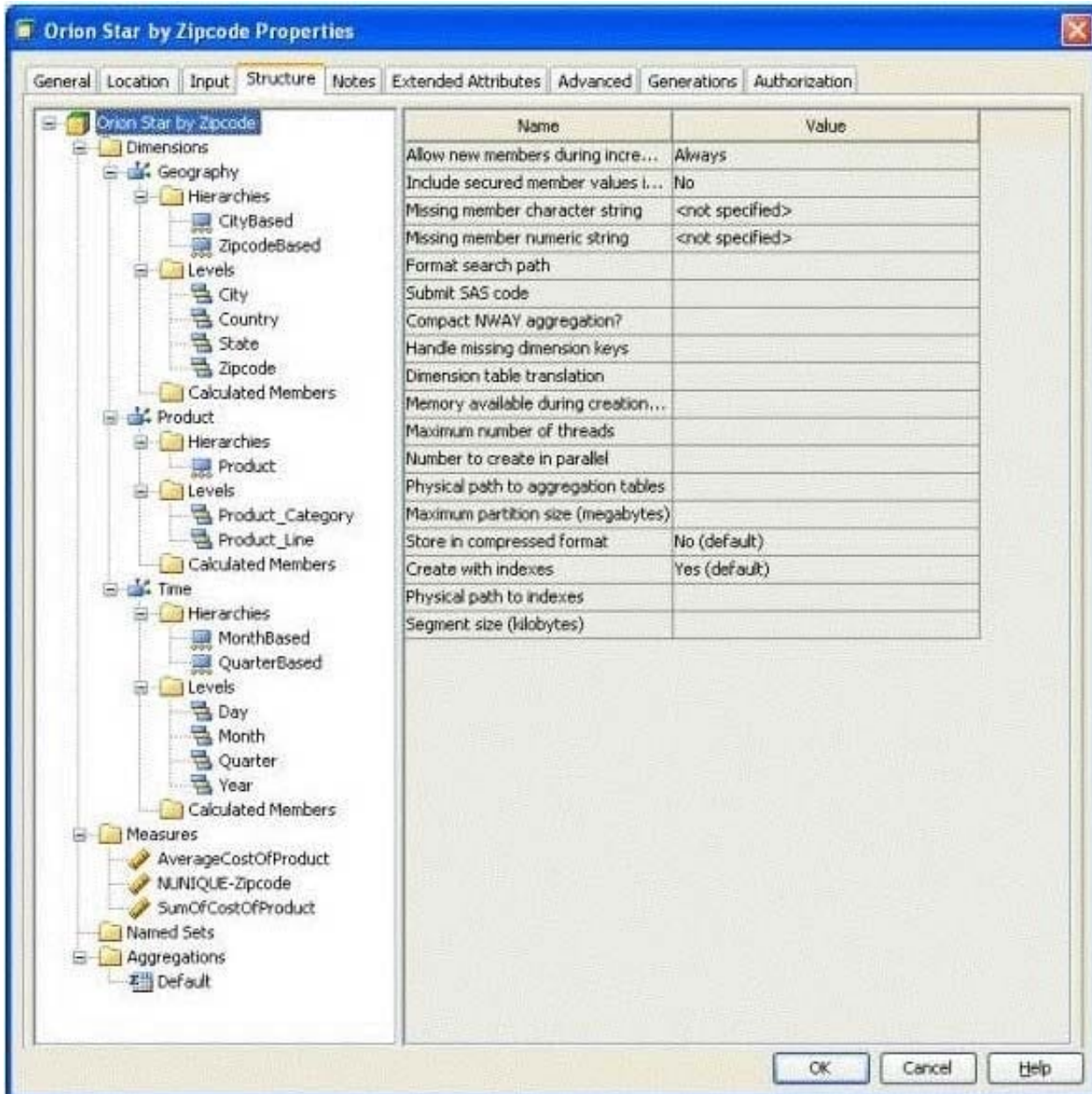
Following Questions and Answers are all new published by SASInstitute
Official Exam Center

-  **Instant Download** After Purchase
-  **100% Money Back** Guarantee
-  **365 Days** Free Update
-  **800,000+** Satisfied Customers



QUESTION 1

Refer to the exhibit.



A SAS Information Map has been built with the SAS OLAP Cube that has been structured as shown in the exhibit.

You want to generate a SAS Web Report Studio report using the information map that contains the cube data.

Which selection is valid?

- A. AverageCostOfProduct, City Based, Zipcode Based, Product, Month Based, Quarter Based
- B. AverageCostOfProduct, City Based, Zipcode Based, Product, Month Based
- C. AverageCostOfProduct, City Based, Product, Month Based, Quarter Based

D. AverageCostOfProduct, City Based, Product, Month Based

Correct Answer: D

QUESTION 2

When saving a report in SAS Web Report Studio, what is a valid output type?

- A. XLS
- B. DOC
- C. HTML
- D. PDF

Correct Answer: D

QUESTION 3

When using SAS Web Report Studio, which data item property needs to be set so that the data item is always automatically included when you open the Information Map directly?

- A. Default Query
- B. Mandatory Query
- C. Automatic Query
- D. Enforced Queue

Correct Answer: C

QUESTION 4

Which item is NOT required for a SASBI Dashboard Custom Graph indicator?

- A. Indicator data object
- B. Display type
- C. Indicator name
- D. SAS folders storage location

Correct Answer: A

QUESTION 5

Which SAS code statement is defined by the Library metadata object?

- A. The LIBNAME statement
- B. The FILENAME statement
- C. The PROC METALIB statement
- D. The OPTIONS statement

Correct Answer: A

QUESTION 6

Which application can NOT import and use shared dynamic prompts?

- A. SAS Enterprise Guide
- B. SAS Information Map Studio
- C. SAS Web Report Studio
- D. SAS Management Console

Correct Answer: C

QUESTION 7

What is the purpose of setting SAS Web Report Studio capabilities in SAS Management Console?

- A. control access to Information Maps
- B. control member level security
- C. control creation of CSS formats for custom report styles
- D. control which application features are available

Correct Answer: D

QUESTION 8

What is the significance of the %STPBEGIN statement? (Choose two.)

- A. Initializes the ODS system
- B. Initiates the prompting for parameters
- C. Processes the user written SAS code
- D. Generates the reserve macro variables

Correct Answer: AD

QUESTION 9

In SAS BIDashboard, which indicator property cannot be set when defining an indicator?

- A. Display settings
- B. Zoom percentage
- C. Height and width
- D. Display type

Correct Answer: B

QUESTION 10

Where can shared prompts be stored?

- A. ASAS Folders location
- B. An operating system location on your machine
- C. An operating system location on the server machine
- D. ASAS Enterprise Guide project

Correct Answer: A

QUESTION 11

In which application can you create shared prompts?

- A. SAS Management Console
- B. SAS Enterprise Guide
- C. SAS Information Map Studio
- D. SAS Web Report Studio

Correct Answer: A

QUESTION 12

A user wants to see the most current information each time the report is opened in SAS Web Report Studio. How can this be accomplished?

- A. Save the report as data is automatically refreshed.
- B. Schedule the report and view the results after it is executed.
- C. Select the Refresh Data button when viewing the report.
- D. Save the report as data can be manually refreshed.

Correct Answer: A

QUESTION 13

In order to create prompt, a content developer has created a "PromptBuilder" stored process. The developer uses this stored process to create prompts and prompt group then save into metadata.

A second content developer has decided to use some of the shared prompts stored in metadata in a new stored process. The second developer has realized one of the shared prompts needs to point to a more recent data source. The two developers agree the update needs to be made:

Where should the shared prompt be updated and who can make the update?

- A. In any stored process using the shared prompt, only by an unrestricted user
- B. In the metadata location where the shared prompt is stored, only by an unrestricted user
- C. In any stored process using the shared prompt, by anyone with appropriate permissions
- D. In the metadata location where the shared prompt is stored, by anyone with appropriate permissions

Correct Answer: D

QUESTION 14

Refer to the exhibit.

VIEWTABLE: Mydata.Class

	Name	Group
1	Alice	Marketing
2	Alice	Marketing
3	Alice	Sales
4	Bob	Sales
5	Bob	Web Report Studio: Advanced
6	Bob	Web Report Studio: Advanced

Filter combinations:
 Group = (&SAS.IdentityGroups)

UserA Properties

General Groups and Roles Accounts Authorization

Search View All

Show Groups Show Roles Search All Repositories

Nested group memberships are not displayed. See the Help for detail.

Available Groups and Roles: Member of:

- Metadata Server: Unrestricted

- Marketing
- Web Report Studio: Advanced

An identity filter based on SAS identityGroups is applied to the Mydata.Class table. How many rows will be returned when UserA uses the map to see a detail listing?

- A. 3
- B. 2
- C. 4
- D. 6

Correct Answer: A

QUESTION 15

Which statement is true regarding roles?

- A. Only groups can be members of roles.
- B. Only users can be members of groups or roles.
- C. You must use roles to control access to application features.
- D. You must use roles to control access to data sources and reporting content.

Correct Answer: C

[A00-270 VCE Dumps](#)

[A00-270 Study Guide](#)

[A00-270 Exam Questions](#)