

# 70-412<sup>Q&As</sup>

Configuring Advanced Windows Server 2012 Services

## Pass Microsoft 70-412 Exam with 100% Guarantee

Free Download Real Questions & Answers **PDF** and **VCE** file from:

<https://www.certbus.com/70-412.html>

100% Passing Guarantee  
100% Money Back Assurance

Following Questions and Answers are all new published by Microsoft  
Official Exam Center

- ⚙️ **Instant Download** After Purchase
- ⚙️ **100% Money Back** Guarantee
- ⚙️ **365 Days** Free Update
- ⚙️ **800,000+** Satisfied Customers



## QUESTION 1

Your network contains an Active Directory domain named adatum.com. The domain contains a file server named Server1 that runs Windows Server 2012 R2.

All client computers run Windows 7.

You need to ensure that user settings are saved to \\Server1\Users\.

What should you do?

- A. From the properties of each user account, configure the User profile settings.
- B. From a Group Policy object (GPO), configure the Folder Redirection settings.
- C. From the properties of each user account, configure the Home folder settings.
- D. From a Group Policy object (GPO), configure the Drive Maps preferences.

Correct Answer: B

User settings and user files are typically stored in the local user profile, under the Users folder. The files in local user profiles can be accessed only from the current computer, which makes it difficult for users who use more than one computer to work with their data and synchronize settings between multiple computers. Two technologies exist to address this problem: Roaming Profiles and Folder Redirection. Folder Redirection lets administrators redirect the path of a folder to a new location. The location can be a folder on the local computer or a directory on a network file share. Users can work with documents on a server as if the documents were based on a local drive. The documents in the folder are available to the user from any computer on the network. Folder Redirection is located under Windows Settings in the console tree when you edit domain-based Group Policy by using the Group Policy Management Console (GPMC).

References: <https://technet.microsoft.com/en-us/library/cc732275.aspx>

---

## QUESTION 2

### HOTSPOT

Your network contains an Active Directory domain named contoso.com. The domain contains two member servers named Server1 and Server2. All servers run Windows Server 2012 R2.

Server1 and Server2 have the Network Load Balancing (NLB) feature installed. The servers are configured as nodes in an NLB cluster named Cluster1. Both servers connect to the same switch.

Cluster1 hosts a secure web Application named WebApp1. WebApp1 saves user state information in a central database.

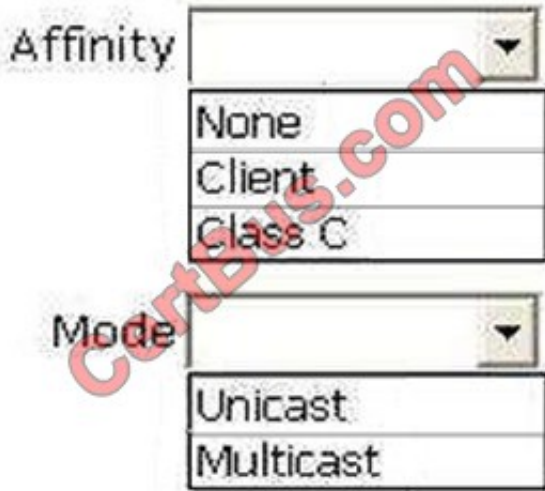
You need to ensure that the connections to WebApp1 are distributed evenly between the nodes. The solution must minimize port flooding.

What should you configure? To answer, configure the appropriate affinity and the appropriate mode for Cluster1 in the answer area.

Hot Area:

Affinity

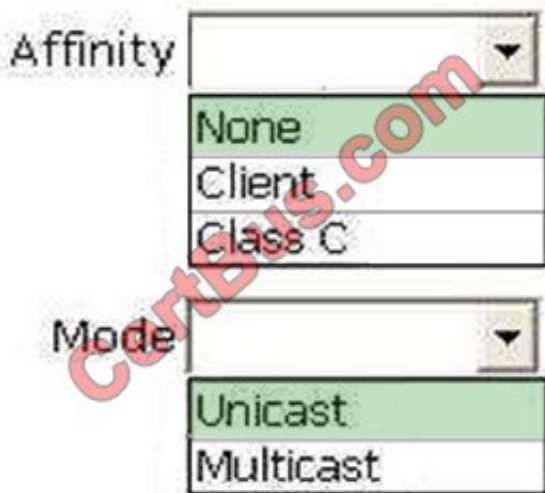
Mode



Correct Answer:

Affinity

Mode



Explanation/Reference:

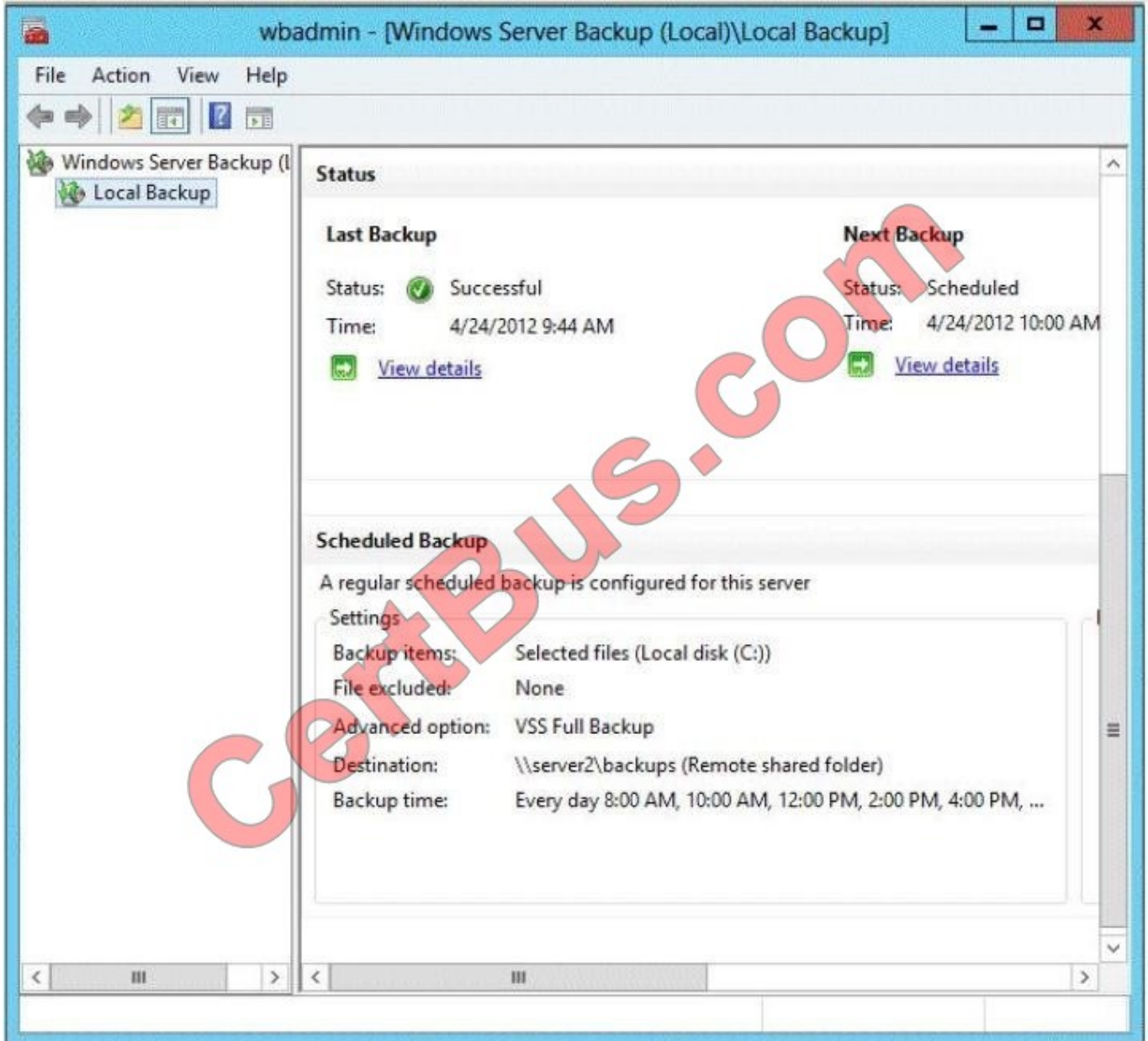
The Affinity parameter is applicable only for the Multiple hosts filtering mode.

With No affinity, NLB does not associate clients with a particular member. Every client request can be load balanced to any member.

References: <https://technet.microsoft.com/en-us/library/bb687542.aspx>

### QUESTION 3

You have a server named Server1 that runs Windows Server 2012 R2. Server1 is backed up by using Windows Server Backup. The backup configuration is shown in the exhibit. (Click the Exhibit button.)

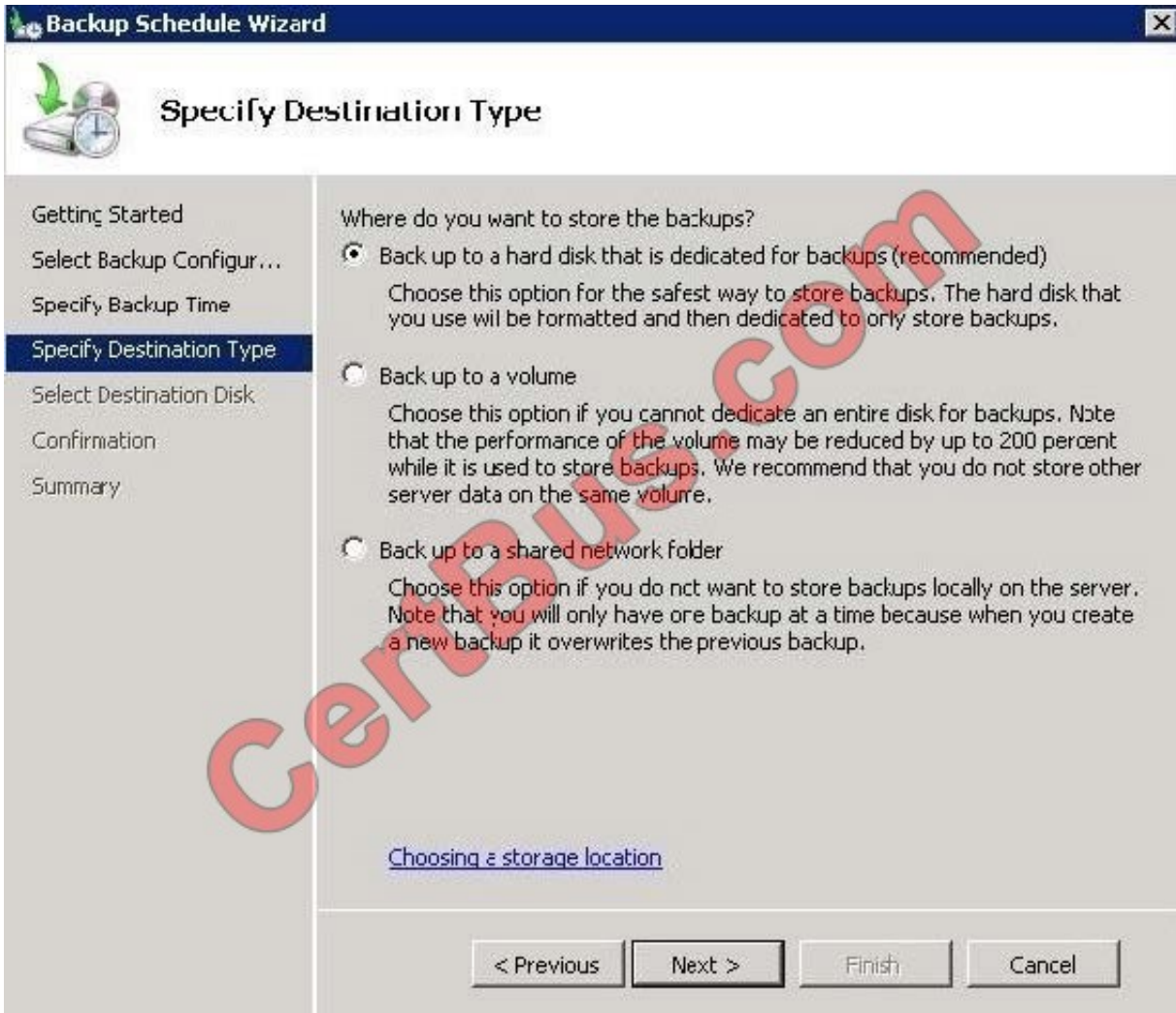


You discover that only the last copy of the backup is maintained. You need to ensure that multiple backup copies are maintained. What should you do?

- A. Modify the backup destination.
- B. Configure the Optimize Backup Performance settings.
- C. Modify the Volume Shadow Copy Service (VSS) settings.
- D. Modify the backup times.

Correct Answer: A

The destination in the exhibit shows a network share is used. If a network share is being used only the latest copy will be saved Reference: Where should I save my backup? <http://windows.microsoft.com/en-us/windows7/where-should-i-save-my-backup>



**QUESTION 4**

Note: This question is part of series of questions that use the same or similar answer choices. An answer choice may be correct for more than one question in the series. Each question is independent of the other questions in this series. Information and details provided in a question apply only to that question.

Your network contains one Active Directory forest named contoso.com. The forest contains two child domains and six domain controllers. The domain controllers are configured as shown in the following table.

Name	Domain	Site
DC1	Contoso.com	Main office
DC2	Contoso.com	Main office
DC3	Contoso.com	Europe office
DC4	Contoso.com	Asia office
DC5	Sales.contoso.com	Main office
DC6	Manufacturing.contoso.com	Main office

You have a trust from contoso.com to another forest named fabrikam.com.

You plan to migrate users from contoso.com to fabrikam.com.

You need to ensure that the users who migrated to fabrikam.com can continue to access shared resources in contoso.com. The solution must not require administrators to modify permissions to shared resources.

What should you use?

- A. Set-ADSite
- B. Set-ADReplicationSite
- C. Set-ADDomain
- D. Set-ADReplicationSiteLink
- E. Set-ADGroup
- F. Set-ADForest
- G. Netdom

Correct Answer: G

The Netdom move command moves a workstation or member server to a new domain. The act of moving a computer to a new domain creates an account for the computer on the domain, if it does not already exist.

Reference: Technet, Netdom move <https://technet.microsoft.com/en-us/library/cc788127.aspx>

---

## QUESTION 5

Your network contains an Active Directory domain named adatum.com. You create a new Group Policy object (GPO) named GPO1.

You need to verify that GPO1 was replicated to all of the domain controllers.

Which tool should you use?

- A. Gpupdate
- B. Gpresult
- C. Group Policy Management
- D. Active Directory Sites and Services

Correct Answer: C

In Windows Server 2012, the Group Policy Management Console (GPMC) was enhanced to provide a report for the overall health state of the Group Policy infrastructure for a domain, or to scope the health view to a single GPO.

Reference: Check Group Policy Infrastructure Status <http://technet.microsoft.com/en-us/library/jj134176.aspx>

---

## QUESTION 6

You have a DNS server named Server1 that runs Windows Server 2012 R2.

You need to disable recursion on Server1.

What are three possible ways to achieve the goal? Each correct answer presents a complete solution.

- A. From DNS Manager, modify the Advanced properties of Server1.
- B. Create a forward lookup zone named GlobalNames.
- C. From DNS Manager, modify the Forwarders properties of server1.
- D. Create a reverse lookup zone named 0.in-addr.arpa.
- E. Create a forward lookup zone named ".".
- F. Run dnscmd.exe and specify the /config parameter.

Correct Answer: AEF

A: To disable recursion on the DNS server using the Windows interface

Open DNS Manager.

In the console tree, right-click the applicable DNS server, then click Properties.

Click the Advanced tab.

In Server options, select the Disable recursion check box, and then click OK.

E: Disable recursion on DNS servers that do not respond to DNS clients directly and that are not configured with forwarders. A DNS server requires recursion only if it responds to recursive queries from DNS clients or if it is configured with a

forwarder. DNS servers use iterative queries to communicate with each other.

The DNS server has root DNS servers in its configuration so it returns the root DNS server details each time it is queried for a non-existent domain name. To prevent this we need to create a forward lookup zone with the name ".".

F: To disable recursion on the DNS server using a command line

Open a command prompt.

Type the following command, and then press ENTER:

```
dnscmd /Config /NoRecursion {1|0}
```

Reference: Disable Recursion on the DNS Server

<https://technet.microsoft.com/en-us/library/cc771738.aspx> Reference: Setting up an authoritative DNS in Windows Server 2008 <http://websistent.com/authoritative-dns-in-windows-server-2008/>

---

## QUESTION 7

Your network contains an Active Directory forest named contoso.com.

Users frequently access the website of an external partner company. The URL of the website is <http://partners.adatum.com>.

The partner company informs you that it will perform maintenance on its Web server and that the IP addresses of the Web server will change.

After the change is complete, the users on your internal network report that they fail to access the website. However, some users who work from home report that they can access the website.

You need to ensure that your DNS servers can resolve [partners.adatum.com](http://partners.adatum.com) to the correct IP address immediately.

What should you do?

- A. Run `ipconfig` and specify the `FlushDns` parameter.
- B. Run `ipconfig` and specify the `Renew` parameter.
- C. Run `dnscmd` and specify the `ClearCache` parameter.
- D. Run `Set-DnsServerResourceRecordAging`.

Correct Answer: C

We can clear the DNS cache on the DNS server with either `Dnscmd /ClearCache` (from command prompt) or `Clear-DnsServerCache` (from Windows PowerShell).

References: Technet, `Dnscmd` <https://technet.microsoft.com/en-us/library/cc772069.aspx>

---

## QUESTION 8

You have a server named File1 that runs Windows Server 2012 R2.

File1 has the File Server role service installed.

You plan to back up all shared folders by using Microsoft Online Backup.

You download and install the Microsoft Online Backup Service Agent on File1.

You need to ensure that you use Windows Server Backup to back up data to Microsoft Online Backup.

What should you do?

- A. From Computer Management, add the File1 computer account to the Backup Operators group.
- B. From Windows Server Backup, run the Register Server Wizard.
- C. From a command prompt, run `wbadmin.exe enable backup`.
- D. From the Services console, modify the Log On settings of the Microsoft Online Backup Service Agent.

Correct Answer: B

To register a server for use with Windows Azure Backup you must run the register server wizard Incorrect Answers:



A: Enables you to back up and restore your operating system, volumes, files, folders, and applications from a command prompt.

References: <https://technet.microsoft.com/en-us/library/hh831677.aspx>

**QUESTION 9**

Your network contains one active directory domain.

The domain contains the servers configured as shown in the following table: Server1 has the zones shown in the following table:

**QUESTION 92  
 HOTSPOT**

Your network contains one active directory domain.

The domain contains the servers configured as shown in the following table:

Server	Function
Server1	Domain Controller DNS server
Server2	Domain Controller DNS server
Server3	DNS server

Server1 has the zones shown in the following table:

zone name	zone type	Is auto created	Is disintegrated	Is reverse lookup zone	Is signed
adatum.com	primary	false	false	false	false
contoso.com	primary	false	true	false	false
litwareinc.com	secondary	false	true	false	false

Server3 has the following output:

zone name	zone type	Is auto created	Is disintegrated	Is reverse lookup zone	Is signed
contoso.com	secondary	false	true	false	false
litwareinc.com	primary	false	true	false	false

Use the drop-down list to select the answer choice that completes each assignment.

Hot Area:

## Answer Area

You can protect [answer choice] by using dnssec:

	▼
only adatum.com	
only contoso.com	
only litwareinc.com	
only contoso.com and adatum.com	
contoso.com, adatum.com and litwareinc.com	

On server1, you configure permissions for the contoso.com zone.  
The permission will be effective on [answer choice]:

	▼
server1 only	
server1 and server2 only	
server1 and server3 only	
server1, server2 and server3.	

Correct Answer:

## Answer Area

You can protect [answer choice] by using dnssec:

	▼
only adatum.com	
only contoso.com	
only litwareinc.com	
only contoso.com and adatum.com	
contoso.com, adatum.com and litwareinc.com	

On server1, you configure permissions for the contoso.com zone.  
The permission will be effective on [answer choice]:

	▼
server1 only	
server1 and server2 only	
server1 and server3 only	
server1, server2 and server3.	

### QUESTION 10

You have a server named Server1.

A Microsoft Azure Backup of Server1 is created automatically every day.

You rename Server1 to Server2.

You discover that backups are no longer created in Azure.

You need to back up the server to Azure.

What should you do?

- A. From the Azure Management Portal, modify the configuration of backup vault.
- B. On Server2, run the Add-WBBackupTarget cmdlet.
- C. On Server2, run the Start-OBRegistration cmdlet.
- D. From the Azure Management Portal, upload the Server2 certificate as a management certificate.

Correct Answer: C

The Start-OBRegistration cmdlet registers the server with using the vault credentials downloaded during enrollment.

What happens if I rename a Windows server that is backing up data to Azure?

Any currently configured backups will be stopped. You will need to reregister the server with the backup vault and it will be considered a new server by Recovery Services, so the first backup operation that occurs after registration will be a full

backup of all of the data included in the backup instead of just the changes since the last backup occurred. However, if you need to perform a recovery operation you can recover the data that has been backed up using Recover from another

server recovery option. For more information, see Rename a server.

References:

<https://azure.microsoft.com/sv-se/documentation/articles/backup-azure-backup-faq/>

[https://technet.microsoft.com/en-us/library/hh770398\(v=wps.630\).aspx](https://technet.microsoft.com/en-us/library/hh770398(v=wps.630).aspx)

#### QUESTION 11

You build a test environment. The test environment contains one Active Directory forest.

The forest contains a single domain named contoso.com. The domain contains the servers configured as shown in the following table.

Name	IP address	Role
DC1	192.168.130.2	Domain controller
DC2	192.168.131.2	Domain controller
Server3	192.168.1.2	Member server
Server4	192.168.2.2	Member server

You run the following commands. New-ADReplicationSite Site1 New-ADReplicationSite Site2 New-ADReplicationSubnet -Name "192.168.1.0/24" -Site Site1 New-ADReplicationSubnet -Name "192.168.2.0/24" -Site Site2 New-ADReplicationSiteLink -Name "SiteLink1" -SitesIncluded Site1,Site2 -Cost 100 -ReplicationFrequencyInMinutes 15 You promote Server3 and Server4 to domain controllers by using the default options. Use the drop-down menus to select the answer choice that completes each statement.

Hot Area:

### Answer Area

If you create an Active Directory object on DC1, the object will [answer choice].

▼
<input type="radio"/> not be replicated <input type="radio"/> be replicated to DC2 only <input type="radio"/> be replicated to Server3 and Server4 only <input type="radio"/> be replicated to all contoso.com domain controllers

If you create an Active Directory object on Server4, the object will [answer choice] to all contoso.com domain controllers.

▼
<input type="radio"/> never be replicated <input type="radio"/> take one replication cycle to be replicated <input type="radio"/> take two replication cycles to be replicated <input type="radio"/> take three replication cycles to be replicated

Correct Answer:

### Answer Area

If you create an Active Directory object on DC1, the object will [answer choice].

▼
<input type="radio"/> not be replicated <input type="radio"/> be replicated to DC2 only <input checked="" type="radio"/> be replicated to Server3 and Server4 only <input type="radio"/> be replicated to all contoso.com domain controllers

If you create an Active Directory object on Server4, the object will [answer choice] to all contoso.com domain controllers.

▼
<input type="radio"/> never be replicated <input checked="" type="radio"/> take one replication cycle to be replicated <input type="radio"/> take two replication cycles to be replicated <input type="radio"/> take three replication cycles to be replicated

\*Replication will only occur between Server3 and Server4.

\* Values that can be transferred in one replication cycle (replication of the current set of updates between a source and destination domain controller): no limit. Reference: How the Active Directory Replication Model Works [https://technet.microsoft.com/en-us/library/cc772726\(v=ws.10\).aspx#w2k3tr\\_repup\\_how\\_otmw](https://technet.microsoft.com/en-us/library/cc772726(v=ws.10).aspx#w2k3tr_repup_how_otmw)

## QUESTION 12

Your network contains an Active Directory domain named contoso.com. The domain contains two member servers named Server1 and Server2. All servers run Windows Server 2012 R2.

Server1 and Server2 are nodes in a Hyper-V cluster named Cluster1. Cluster1 hosts 10 virtual machines. All of the virtual machines run Windows Server 2012 R2 and are members of the domain.

You need to ensure that the first time a service named Service1 fails on a virtual machine, the virtual machine is moved to a different node.

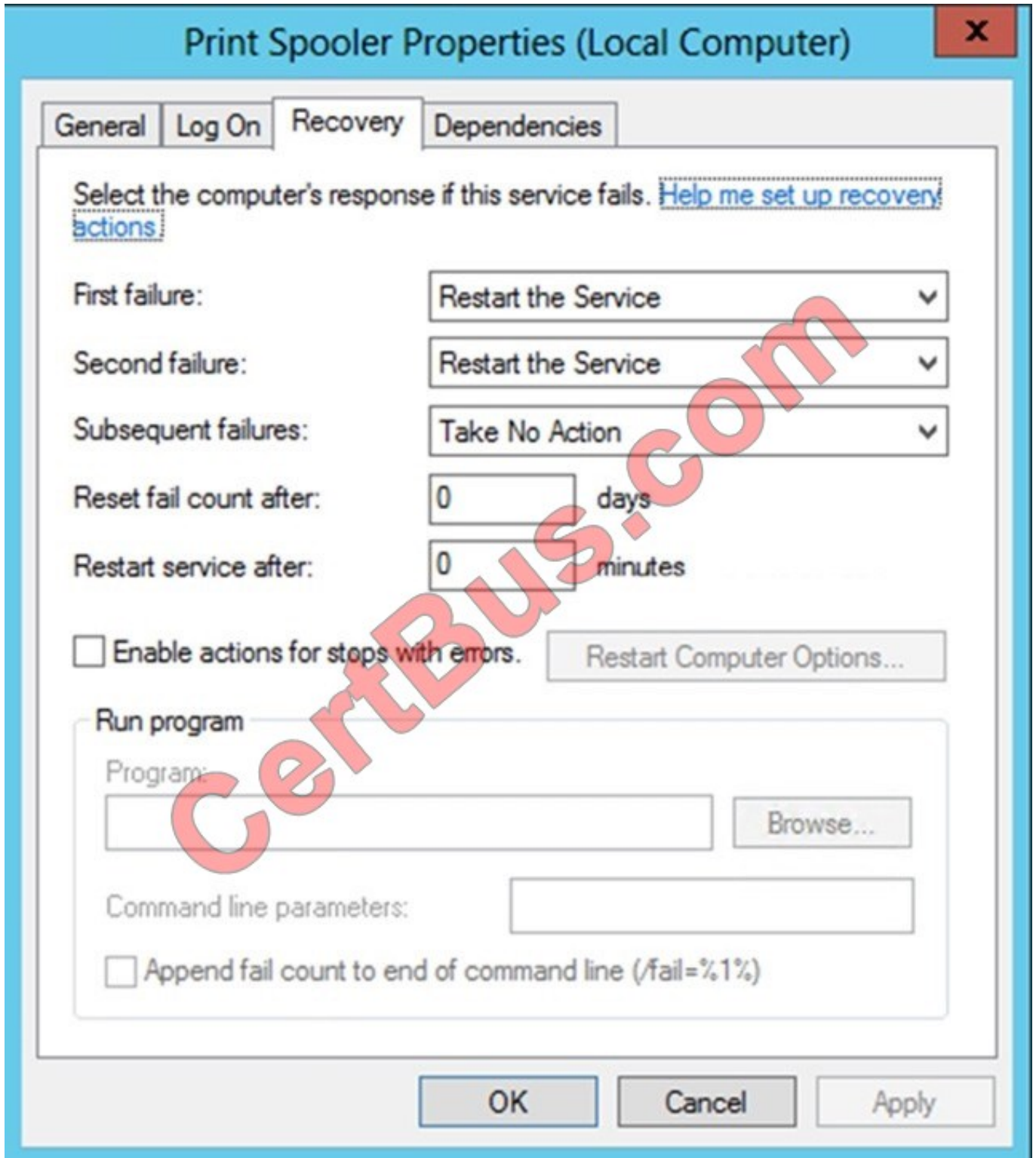
You configure Service1 to be monitored from Failover Cluster Manager.

What should you configure on the virtual machine?

- A. From the Recovery settings of Service1, set the First failure recovery action to Take No Action.
- B. From the General settings, modify the Startup type.
- C. From the Recovery settings of Service1, set the First failure recovery action to Restart the Service.
- D. From the General settings, modify the Service status.

Correct Answer: A

When a monitored service fails the Recovery features of the service will take action. Example:



In this case for the first failure the service will be restarted by the Service Control Manager inside the guest operating system, if the service fails for a second time the service will again be restarted via guest operating system. In case of a third failure the Service Control Manager will take no action and the Cluster service running on the Hyper-V host will take over recovery actions.

References: How to configure VM Monitoring in Windows Server 2012

### QUESTION 13

Your company has a main office and a branch office. The main office is located in Detroit. The branch office is located in Seattle.

The network contains an Active Directory domain named adatum.com. Client computers run either Windows 7 Enterprise or Windows 8.1 Enterprise.

The main office contains 1,000 client computers and 50 servers. The branch office contains 20 client computers.

All computer accounts for the branch office are located in an organizational unit (OU) named SeattleComputers. A Group Policy object (GPO) named GPO1 is linked to the SeattleComputers OU.

You need to configure BranchCache for the branch office.

Which of following settings should you configure in GPO1? (Choose 2)

- A. Turn on BranchCache
- B. Set age for segments in the data cache
- C. Set BranchCache Hosted Cache mode
- D. Configure Hosted Cache Servers
- E. Set BranchCache Distributed Cache mode

Correct Answer: AE

---

### QUESTION 14

Your network contains an Active Directory domain named adatum.com. All servers run Windows Server 2012 R2. All domain controllers have the DNS Server server role installed.

You have a domain controller named DC1.

On DC1, you create an Active Directory-integrated zone named adatum.com and you sign the zone by using DNSSEC.

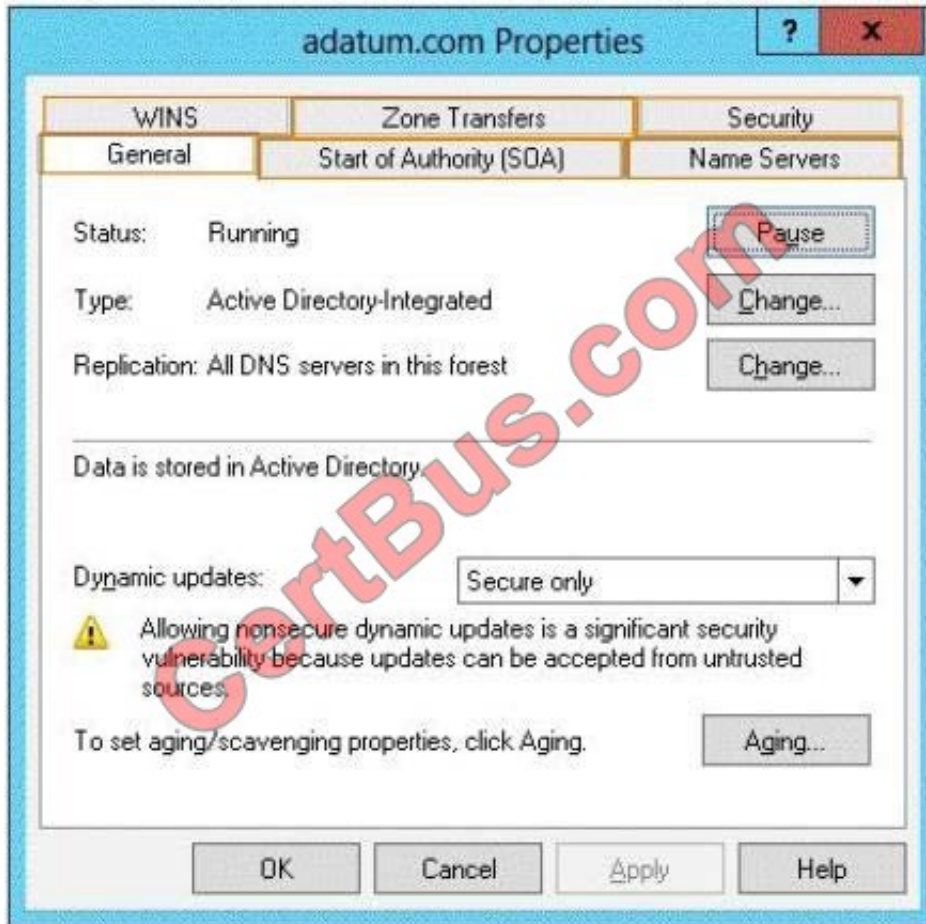
You deploy a new read-only domain controller (RODC) named RODC1.

You need to ensure that the contoso.com zone replicates to RODC1.

What should you configure on DC1?

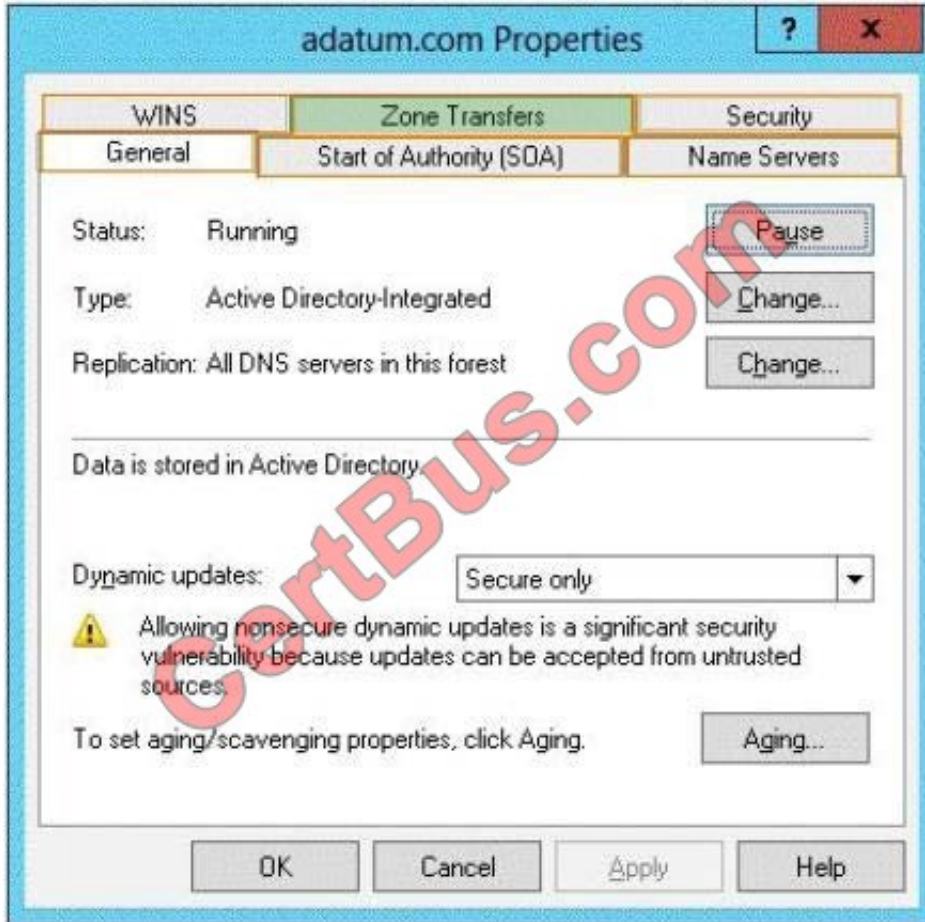
To answer, select the appropriate tab in the answer area.

Hot Area:

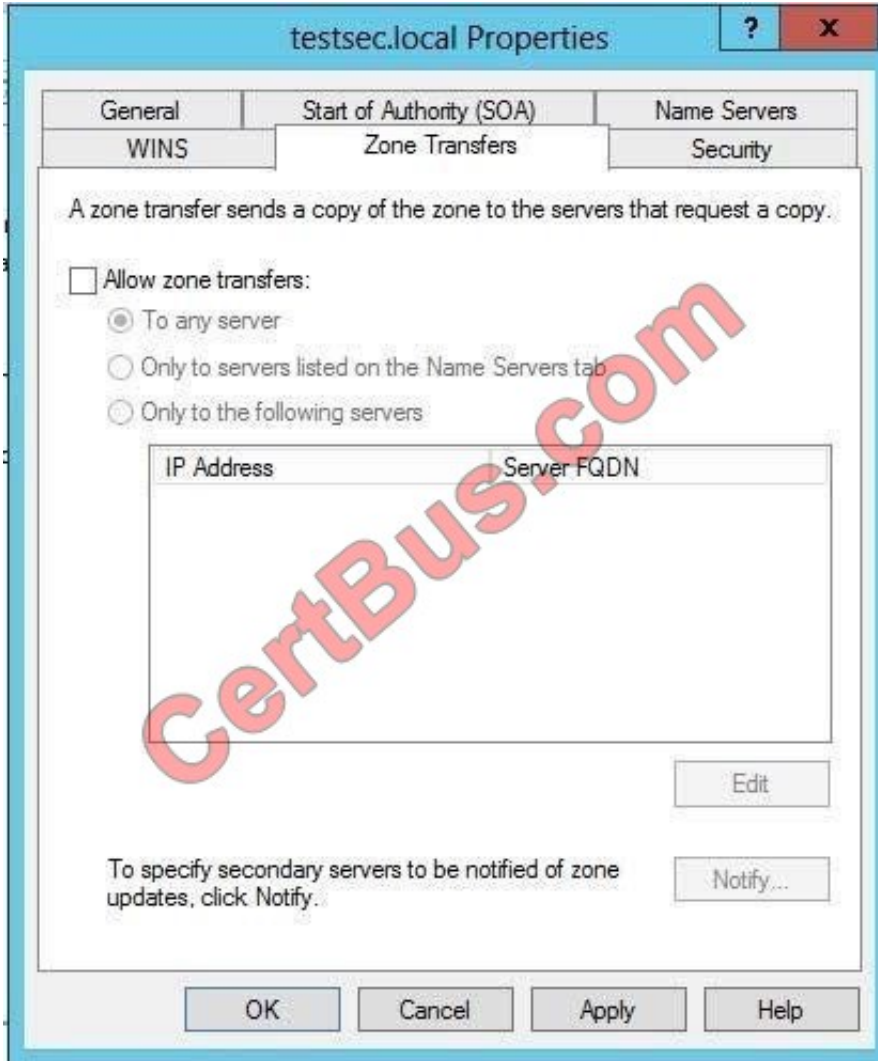


Correct Answer:





For additional servers to host a zone, zone transfers are required to replicate and synchronize all copies of the zone used at each server configured to host the zone.



Reference: Understanding zones and zone transfer [http://technet.microsoft.com/en-us/library/cc781340\(v=ws.10\).aspx](http://technet.microsoft.com/en-us/library/cc781340(v=ws.10).aspx)

#### QUESTION 15

Your network contains an Active Directory domain named contoso.com.

Domain controllers run either Windows Server 2008, Windows Server 2008 R2, or Windows Server 2012 R2.

You have a Password Settings object (PSOs) named PSO1.

You need to view the settings of PSO1.

Which tool should you use?

- A. Get-ADDomainControllerPasswordReplicationPolicy
- B. Get-ADDefaultDomainPasswordPolicy
- C. Server Manager

D. Get-ADFineGrainedPasswordPolicy

Correct Answer: D

D. Gets one or more Active Directory fine grained password policies.

Incorrect Answers:

A: Gets the members of the allowed list or denied list of a read-only domain controller's password replication policy

B: Gets the default password policy for an Active Directory domain.

C: PSO's managed from AD AC or PowerShell Only

References: <https://technet.microsoft.com/en-us/library/ee617207.aspx> <https://technet.microsoft.com/en-us/library/ee617244.aspx> <https://technet.microsoft.com/en-us/library/ee617231.aspx>

[Latest 70-412 Dumps](#)

[70-412 PDF Dumps](#)

[70-412 Exam Questions](#)

To Read the [Whole Q&As](#), please purchase the [Complete Version](#) from [Our website](#).

## Try our product !

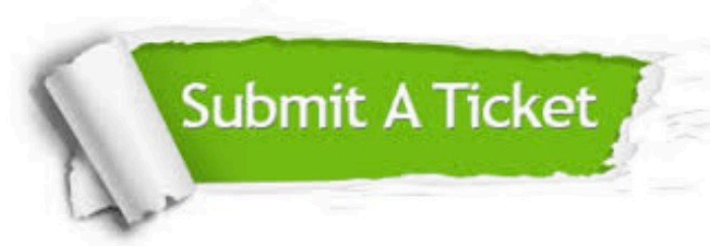
100% Guaranteed Success  
100% Money Back Guarantee  
365 Days Free Update  
Instant Download After Purchase  
24x7 Customer Support  
Average 99.9% Success Rate  
More than 800,000 Satisfied Customers Worldwide  
Multi-Platform capabilities - [Windows](#), [Mac](#), [Android](#), [iPhone](#), [iPod](#), [iPad](#), [Kindle](#)

We provide exam PDF and VCE of Cisco, Microsoft, IBM, CompTIA, Oracle and other IT Certifications.  
You can view Vendor list of All Certification Exams offered:

<https://www.certbus.com/allproducts>

## Need Help

Please provide as much detail as possible so we can best assist you.  
To update a previously submitted ticket:



 <p><b>One Year Free Update</b> Free update is available within One Year after your purchase. After One Year, you will get 50% discounts for updating. And we are proud to boast a 24/7 efficient Customer Support system via Email.</p>	 <p><b>Money Back Guarantee</b> To ensure that you are spending on quality products, we provide 100% money back guarantee for 30 days from the date of purchase.</p>	 <p><b>Security &amp; Privacy</b> We respect customer privacy. We use McAfee's security service to provide you with utmost security for your personal information &amp; peace of mind.</p>
---	---	--

Any charges made through this site will appear as Global Simulators Limited.  
All trademarks are the property of their respective owners.  
Copyright © certbus, All Rights Reserved.