

70-243^{Q&As}

Administering and Deploying System Center 2012 Configuration Manager

Pass Microsoft 70-243 Exam with 100% Guarantee

Free Download Real Questions & Answers **PDF** and **VCE** file from:

<https://www.certbus.com/70-243.html>

100% Passing Guarantee
100% Money Back Assurance

Following Questions and Answers are all new published by Microsoft Official Exam Center

- ⚙️ **Instant Download** After Purchase
- ⚙️ **100% Money Back** Guarantee
- ⚙️ **365 Days** Free Update
- ⚙️ **800,000+** Satisfied Customers



QUESTION 1

HOTSPOT

Your network contains a single Active Directory named contoso.com. A System Center 2012 R2 Configuration Manager Service Pack 1 (SP1) primary site named S01 is deployed to contoso.com. The Configuration Manager deployment includes the servers configured as shown in the following table.

Server name	Site system role
Server1	Site server
Server2	Management point
Server3	Distribution point
Server4	Enrollment point
Server5	Software update point

The distribution point is configured to require HTTPS for client communications.

You have a domain computer named Computer1 that runs the 64-bit version of Windows 8.1.

You need to install the Configuration Manager client on Computer1 manually.

Which network location should you use to start the installation? To answer, select the appropriate options in the answer area.

Hot Area:

Answer Area

\\Server1.contoso.com\sms_s01\client\	Ccmsetup.cab
\\Server3.contoso.com\sms_s01\client\x64\	Ccmsetup.exe
ftp://server1.contoso.com/sms_s01/client/	Client.msi
ftp://server3.contoso.com/sms_s01/client/x64/	ScepInstall.exe
http://server3.contoso.com/sms_s01/client/	
http://server3.contoso.com/sms_s01/client/x64/	
https://server1.contoso.com/sms_s01/client/	
https://server1.contoso.com/sms_s01/client/x64/	

Correct Answer:

Answer Area

\\Server1.contoso.com\sms_s01\client\	Ccmsetup.cab
\\Server3.contoso.com\sms_s01\client\x64\	Ccmsetup.exe
ftp://server1.contoso.com/sms_s01/client/	Client.msi
ftp://server3.contoso.com/sms_s01/client/x64/	ScepInstall.exe
http://server3.contoso.com/sms_s01/client/	
http://server3.contoso.com/sms_s01/client/x64/	
https://server1.contoso.com/sms_s01/client/	
https://server1.contoso.com/sms_s01/client/x64/	

You can manually install the System Center 2012 Configuration Manager client software on computers in your enterprise by using the CCMSetup.exe program. This program and its supporting files can be found in the Client folder of the System Center 2012 Configuration Manager installation folder on the site server and on management points in your site. This folder is shared to the network as \SMS_Client.

QUESTION 2

HOTSPOT

You have a System Center 2012 R2 Configuration Manager Service Pack 1 (SP1) standalone primary site.

You have a Configuration Manager application named App1 and a Configuration Manager package named Package1.

You need to ensure that App1 and Package1 are deployed only to Windows 8 computers.

In the table below, identify what to configure for App1 and Package1.

NOTE: Make only one selection in each column.

Hot Area:

Answer Area

Configuration	App1	Package1
Deployment type requirements	<input type="radio"/>	<input type="radio"/>
Distribution settings	<input type="radio"/>	<input type="radio"/>
Program advanced settings	<input type="radio"/>	<input type="radio"/>
Program requirements	<input type="radio"/>	<input type="radio"/>

Correct Answer:

Answer Area

Configuration	App1	Package1
Deployment type requirements	<input type="radio"/>	<input type="radio"/>
Distribution settings	<input type="radio"/>	<input type="radio"/>
Program advanced settings	<input type="radio"/>	<input type="radio"/>
Program requirements	<input checked="" type="radio"/>	<input checked="" type="radio"/>

QUESTION 3

DRAG DROP

You use Windows Server Update Services (WSUS) to deploy software updates. Automatic update settings are configured by using Group Policy objects (GPOs).

You deploy System Center 2012 R2 Configuration Manager Service Pack 1 (SP1).

You need to ensure that software update are managed by using Configuration Manager.

The solution must ensure that software updates are managed centrally always.

Which three actions should you perform in sequence? To answer, move the appropriate actions from the list of actions to the answer area and arrange them in the correct order.

Select and Place:

Actions	Answer Area
Unlink the GPO.	
Uninstall WSUS.	
Perform a sync of the software update point.	
Configure WSUS to use an upstream server.	
Add a Software update point site system role.	

➤
➤
⬅
⬅
⬆
⬆

Correct Answer:

Actions	Answer Area
Unlink the GPO.	Add a Software update point site system role.
Uninstall WSUS.	Configure WSUS to use an upstream server.
	Perform a sync of the software update point.

Configuring Software Updates in Configuration Manager Step 1: The software update point is required on the central administration site and on the primary sites in order to enable software updates compliance assessment and to deploy software updates to clients. The software update point is optional on secondary sites. The software update point site system role must be created on a server that has WSUS installed. Step 2: You can configure the upstream synchronization source for software updates synchronization on the Synchronization Source page of the wizard, or on the on the Sync Settings tab in Software Update Point Component Properties. Step 3: Synchronize software updates on a connected software update point

References: <https://technet.microsoft.com/en-us/library/gg712312.aspx>

QUESTION 4

DRAG DROP

Your network contains a System Center 2012 R2 Configuration Manager Service Pack 1 (SP1) environment.

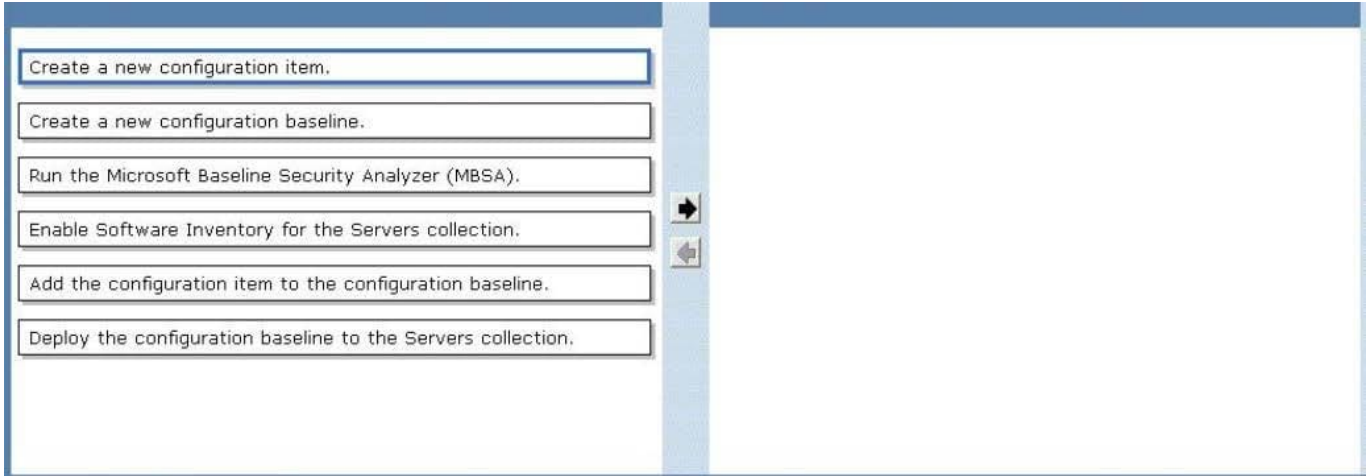
Your company has a security policy that contains mandatory registry settings for all servers.

You have a collection named Servers that contains all of the servers.

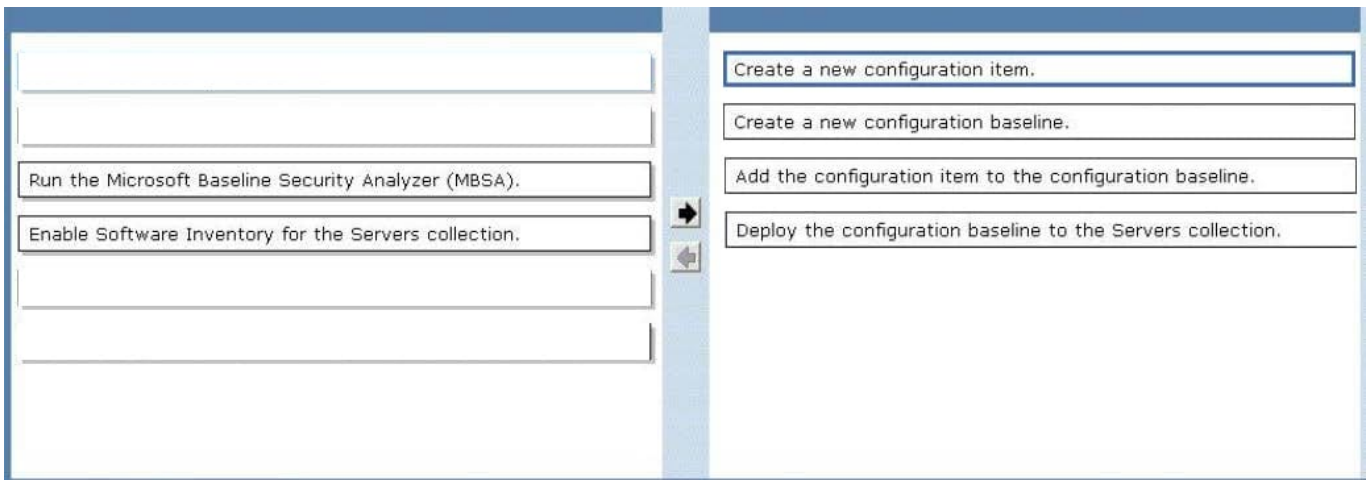
You need to identify which servers do not comply with the security policy.

Which four actions should you perform in sequence? To answer, move the appropriate actions from the list of actions to the answer area and arrange them in the correct order.

Select and Place:



Correct Answer:



QUESTION 5

DRAG DROP

You have a System Center 2012 R2 Configuration Manager Service Pack 1 (SP1) stand-alone primary site.

You need to create a configuration item that detects the version of an installed application based on a registry value. If version 3 of the application is not installed, the configuration item must install version 3 of the application.

How should you configure the configuration item? To answer drag the appropriate options to the correct locations. Each option may be used once, more than once, or not at all. You may need to drag the split bar between panes or scroll to view content.

Select and Place:

Options

- Registry value
- Script
- WQL query

Answer Area

Setting type:

Option

Remediation method:

Option

Correct Answer:

Options

-
-
- WQL query

Answer Area

Setting type:

Registry value

Remediation method:

Script

QUESTION 6

HOTSPOT

You manage a System Center 2012 R2 Configuration Manager Service Pack 1 (SP1) site.

You plan to create two collections named Collection1 and Collection2 that have dynamic membership rules. Collection1 will contain all of the servers in the domain. Collection2 will contain only the domain controllers.

You have a Configuration Manager query that you will use as the basis for creating the collection. The query has the following WQL statement.

Select

```
SMS_R_SYSTEM.ResourceID, SMS_R_SYSTEM.ResourceType,
SMS_R_SYSTEM.Name, SMS_R_SYSTEM.SMSUniqueIdentifier,
SMS_R_SYSTEM.ResourceDomainORWorkgroup,
SMS_R_SYSTEM.Client from SMS_R_System inner join
SMS_G_System_SYSTEM on SMS_G_System_SYSTEM.ResourceId =
SMS_R_System.ResourceId where SMS_G_System_SYSTEM.SystemRole = "Server"
```

You need to complete the statement that will be used for each collection.

Which class and attribute should you add in the where clause for each collection? To answer, select the appropriate options in the answer area.

Hot Area:

Answer Area

Collection1:

SMS_G_System_SYSTEM.Domain
SMS_G_System_SYSTEM.SystemRole
SMS_G_System_SYSTEM_ACCOUNT.Domain
SMS_R_SYSTEM.SMSUniqueIdentifier

Collection2:

SMS_G_System_SYSTEM.Domain
SMS_G_System_SYSTEM.SystemRole
SMS_G_System_SYSTEM_ACCOUNT.Domain
SMS_R_SYSTEM.PrimaryGroupID
SMS_R_SYSTEM.SMSUniqueIdentifier

Correct Answer:

Answer Area

Collection1:

SMS_G_System_SYSTEM.Domain
SMS_G_System_SYSTEM.SystemRole
SMS_G_System_SYSTEM_ACCOUNT.Domain
SMS_R_SYSTEM.SMSUniqueIdentifier

Collection2:

SMS_G_System_SYSTEM.Domain
SMS_G_System_SYSTEM.SystemRole
SMS_G_System_SYSTEM_ACCOUNT.Domain
SMS_R_SYSTEM.PrimaryGroupID
SMS_R_SYSTEM.SMSUniqueIdentifier

*

All Servers example:


```
select SMS_R_SYSTEM.ResourceID, SMS_R_SYSTEM.ResourceType, SMS_R_SYSTEM.
```

```
Name, SMS_R_SYSTEM.SMSUniqueIdentifier, SMS_R_SYSTEM.ResourceDomainORWorkgroup, SMS_R_SYSTEM.Client from SMS_R_System inner join
```

```
SMS_G_System_SYSTEM on SMS_G_System_SYSTEM.ResourceID =
```

```
SMS_R_System.ResourceID where SMS_G_System_SYSTEM.SystemRole = "Server"
```

*

All Domain Controllers example:

```
select
```

```
SMS_R_SYSTEM.ResourceID, SMS_R_SYSTEM.ResourceType, SMS_R_SYSTEM.Name, SMS_R_SYSTEM.SMSUniqueIdentifier, SMS_R_SYSTEM.ResourceDomainORWorkgroup, SMS_R_SYSTEM.Client from SMS_R_System where
```

```
SMS_R_System.PrimaryGroupID= "516"
```

```
SMS_G_SYSTEM_ACCOUNT.Domain
```

```
SMS_G_SYSTEM.DOMAIN
```

```
SMS_R_SYSTEM.SMSUniqueIdentifier
```

References: Useful ConfigMgr Collection Queries

<http://blogs.technet.com/b/ryanar/archive/2014/01/27/useful-configmgr-collectionqueries.aspx>

QUESTION 7

DRAG DROP

Your network contains a single Active Directory domain named contoso.com. System Center 2012 R2 Configuration Manager Service Pack 1 (SP1) is deployed to contoso.com.

You have a Windows 8.1 operating system image named Image1 in Configuration Manager. Image1 has the data source of \\server1.contoso.com\source\Image1.wim. New client computers are deployed by using Image1.

You have an application named App1. App1 is a configuration utility that must be installed by using a Windows Installer (MSI) package.

You need to ensure that App1 is included in all future deployments of Image1.

Which four actions should you perform in sequence? To answer, move the appropriate actions from the list of actions to the answer area and arrange them in the correct order.

Select and Place:

Actions

- Refresh Image1.
- Install App1.exe.
- Deploy Image 1.
- Capture an image.
- Mount Image1.wim.
- Unmount Image1.wim.
- Schedule updates for Image1.
- Distribute the image to distribution points.

Answer Area



Correct Answer:

Actions

- Refresh Image1.
-
-
-
- Mount Image1.wim.
- Unmount Image1.wim.
- Schedule updates for Image1.
-

Answer Area

- Deploy Image 1.
- Install App1.exe.
- Capture an image.
- Distribute the image to distribution points.



QUESTION 8

DRAG DROP

You have a System Center 2012 R2 Configuration Manager Service Pack 1 (SP1) standalone primary site.

You use Configuration Manager to deploy software updates to client computers.

You plan to monitor the software update deployment process from a client computer.

You need to collect data as quickly as possible to monitor the software update deployment process.

Which actions should you initiate from the client computer? To answer, drag the appropriate actions to the correct locations. Each action may be used once, more than once, or not at all. You may need to drag the split bar between

panes or

scroll to view content.

Select and Place:

Actions

- Discovery Data Collection Cycle
- Machine Policy Retrieval and Evaluation Cycle
- Software Inventory Cycle
- Software Updates Deployment Evaluation Cycle
- Software Updates Scan Cycle

Answer Area

First action: Action

Second action: Software Updates Scan Cycle

Third action: Action

Correct Answer:

Actions

- Discovery Data Collection Cycle
- Machine Policy Retrieval and Evaluation Cycle
- Software Inventory Cycle
- Software Updates Deployment Evaluation Cycle
- Software Updates Scan Cycle

Answer Area

First action: Machine Policy Retrieval and Evaluation Cycle

Second action: Software Updates Scan Cycle

Third action: Software Updates Deployment Evaluation Cycle

QUESTION 9

HOTSPOT

You have a System Center 2012 R2 Configuration Manager Service Pack 1 (SP1) deployment.

The relevant Configuration Manager client computers are configured as shown in the following table.

Computer name	RAM	Operating system	User
Client1	2 GB	Windows 7	User1
Client2	4 GB	Windows 8.1	User2

You create a user collection named Collection1. You add User1 and User2 to Collection1.

You create an application named App1. App1 has one deployment type and the following requirements:

- Total physical memory: Greater than or equal to 2,000 MB
- Operating system: Windows 7 or Windows 8

You deploy App1 to Collection1 as a required deployment. The deadline is set to the default.

You need to identify which status will appear for the App1 deployment before the users log on to a computer and after the users log on to the computer.

What should you identify? To answer, select the appropriate options in the answer area.

Hot Area:

Answer Area

Before User1 and User2 log on to a client computer

Success:

0	▲▼
1	
2	

In progress:

0	▲▼
1	
2	

Requirements not met:

0	▲▼
1	
2	

Unknown:

0	▲▼
1	
2	

Four hours after User1 and User2 log on to the computer:

Success:

0	▲▼
1	
2	

In progress:

0	▲▼
1	
2	

Requirements not met:

0	▲▼
1	
2	

Unknown:

0	▲▼
1	
2	

Correct Answer:

Answer Area

Before User1 and User2 log on to a client computer

Success:

0	▲▼
1	
2	

In progress:

0	▲▼
1	
2	

Requirements not met:

0	▲▼
1	
2	

Unknown:

0	▲▼
1	
2	

Four hours after User1 and User2 log on to the computer:

Success:

0	▲▼
1	
2	

In progress:

0	▲▼
1	
2	

Requirements not met:

0	▲▼
1	
2	

Unknown:

0	▲▼
1	
2	

QUESTION 10

HOTSPOT

You have a System Center 2012 R2 Configuration Manager Service Pack 1 (SP1) deployment.

You use Configuration Manager to deploy Windows 8.1 to client computers.

You need to encrypt the contents of the operating system volume during the operating system deployment and to store recovery keys in Active Directory. The solution must minimize the amount of time required to deploy the operating system.

Which task sequence steps should you use to perform each task? To answer, select the appropriate options in the answer area.

Hot Area:

Answer Area

Encrypt the drive:

	▼
Enable BitLocker	
Pre-provision BitLocker	

Store the recovery key:

	▼
Enable BitLocker	
Capture the Windows settings	
Pre-provision BitLocker	

Correct Answer:

Answer Area

Encrypt the drive:

	▼
Enable BitLocker	
Pre-provision BitLocker	

Store the recovery key:

	▼
Enable BitLocker	
Capture the Windows settings	
Pre-provision BitLocker	

*

Pre-provision BitLocker

This step enables BitLocker on a drive while in Windows PE. Only the used drive space is encrypted. Because you partitioned and formatted the hard drive in the previous step, there is no data, and encryption completes very quickly.

*

Enable BitLocker

This step enables BitLocker encryption on the hard drive and sets key protectors. Because the hard drive was pre-provisioned with BitLocker, this step completes very quickly.

Windows 7/8/10 requires that you add a key protector.

Note: The Pre-provision BitLocker task sequence step in Microsoft System Center 2012 Configuration Manager allows you to enable BitLocker from the Windows Preinstallation Environment (Windows PE) prior to operating system

deployment. Only the used drive space is encrypted, and therefore, encryption times are much faster.

References: <https://technet.microsoft.com/en-us/library/dn456883.aspx>

QUESTION 11

HOTSPOT

You have a System Center 2012 R2 Configuration Manager Service Pack 1 (SP1) deployment.

You are creating a custom security role named Role1.

You need to ensure that users to whom Role1 is assigned can create and deploy configuration baselines.

Which two permissions should you modify for Role1? To answer, select the appropriate permissions in the answer area.

Hot Area:

Specify details for the customized copy of the selected security role.

Name:

Description:

Based on:

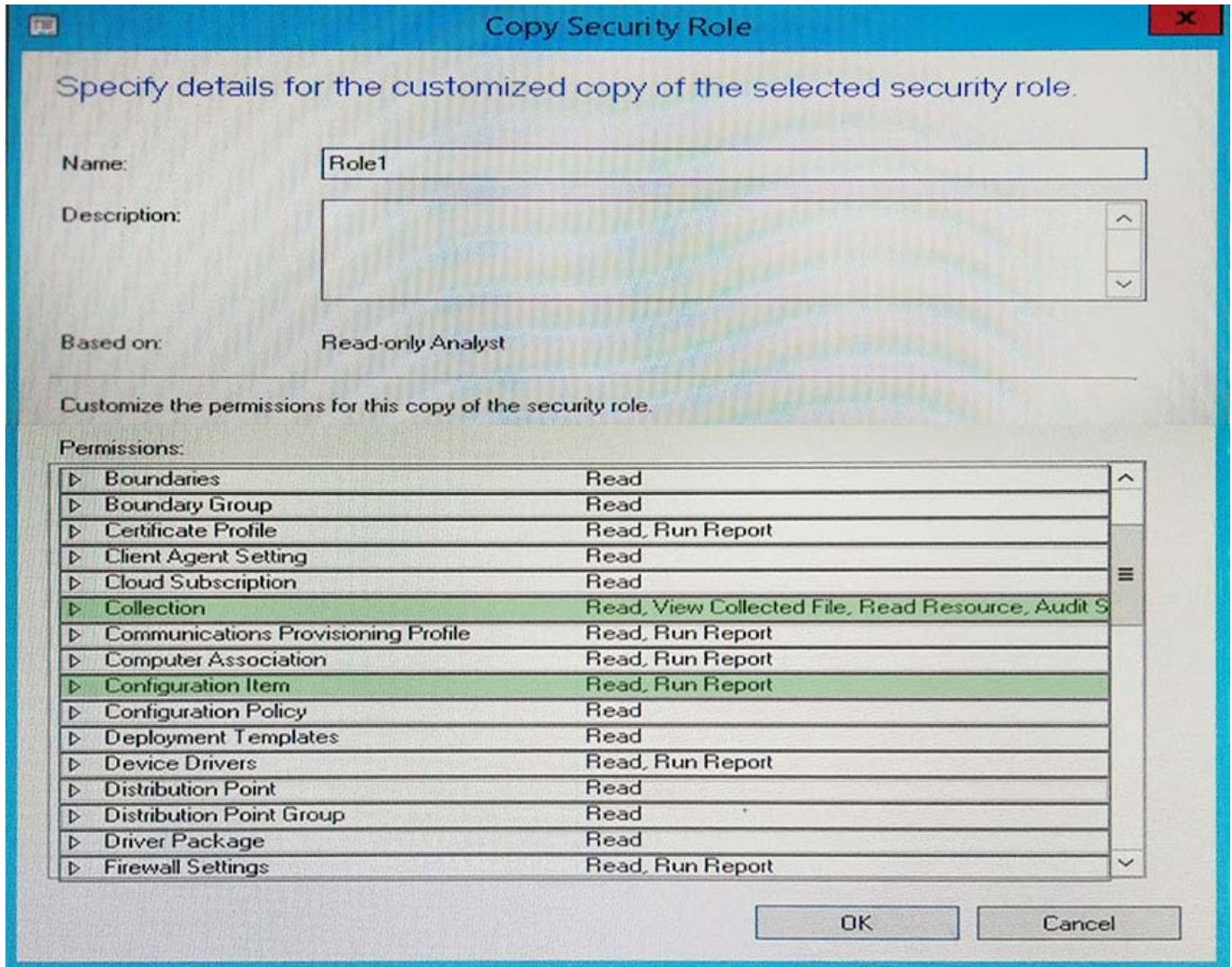
Customize the permissions for this copy of the security role.

Permissions:

Permission	Current Permissions
Boundaries	Read
Boundary Group	Read
Certificate Profile	Read, Run Report
Client Agent Setting	Read
Cloud Subscription	Read
Collection	Read, View Collected File, Read Resource, Audit S
Communications Provisioning Profile	Read, Run Report
Computer Association	Read, Run Report
Configuration Item	Read, Run Report
Configuration Policy	Read
Deployment Templates	Read
Device Drivers	Read, Run Report
Distribution Point	Read
Distribution Point Group	Read
Driver Package	Read
Firewall Settings	Read, Run Report

OK Cancel

Correct Answer:



QUESTION 12

HOTSPOT

Your network contains a System Center 2012 Configuration Manager environment.

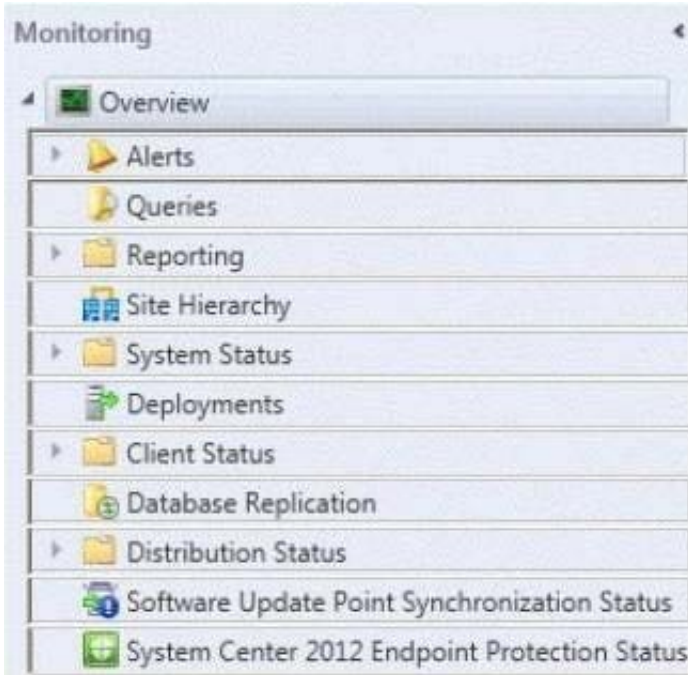
You deploy an application to 1,000 client computers.

You need to identify which client computers are in the process of installing the application.

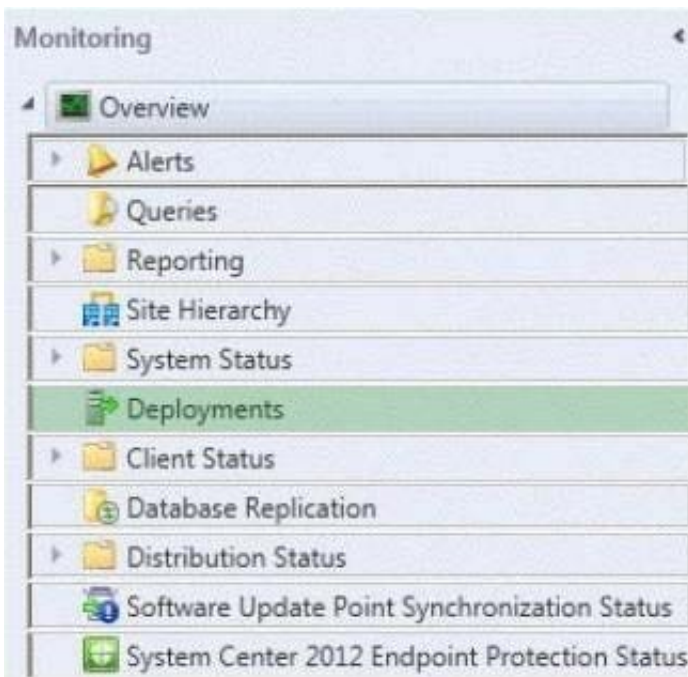
Which node should you select in the Configuration Manager console?

To answer, select the appropriate node in the answer area.

Hot Area:



Correct Answer:



To monitor the state of an application in the Configuration Manager console

1.

In the Configuration Manager console, click Monitoring.

2.

In the Monitoring workspace, click Deployments.

QUESTION 13

HOTSPOT

You have a System Center 2012 R2 Configuration Manager Service Pack 1 (SP1) primary site named S01 that includes the servers configured as shown in the following table.

Server name	Configuration
Server1	Configuration Manager
Server2	Microsoft SQL Server 2012 Service Pack 2 (SP2)

You perform regular site backups by using Configuration Manager.

You create a test environment that is isolated completely from the production network. The Active Directory configuration in the test environment and the production environment are identical.

A user named User1 plans to test disaster recovery procedures by using servers in the test environment. The servers are configured as shown in the following table.

Server name	Configuration
ServerA	Member server
ServerB	SQL Server 2012 SP2

User1 is a member of the Administrators group on ServerA and ServerB.

You need to enable User1 to reinstall Configuration Manager manually on ServerA and to use the Recovery Wizard to restore the database on ServerB.

What should you do? To answer, select the appropriate options in the answer area.

Hot Area:

Answer Area

Before User1 reinstalls Configuration Manager, you must:

<input type="checkbox"/> Rename ServerA <input type="checkbox"/> Rename ServerB <input type="checkbox"/> Grant ServerA Full Control permissions to the System container <input type="checkbox"/> Grant User1 Full Control permissions to the ServerA computer object

Before you can restore the site database, you must:

<input type="checkbox"/> Rename ServerB <input type="checkbox"/> Create an empty database named CM_S01 <input type="checkbox"/> Run the Restore-DscConfiguration cmdlet <input type="checkbox"/> Delete the Configuration Manager database

Correct Answer:

Answer Area

Before User1 reinstalls Configuration Manager, you must:

- Rename ServerA
- Rename ServerB
- Grant ServerA Full Control permissions to the System container
- Grant User1 Full Control permissions to the ServerA computer object

Before you can restore the site database, you must:

- Rename ServerB
- Create an empty database named CM_S01
- Run the Restore-DscConfiguration cmdlet
- Delete the Configuration Manager database

* When we have created the system management container, we must grant the site server's computer account the permissions that are required to publish site information to the container. The primary site server computer account must be granted Full Control permissions to the System Management container and all its child objects.

QUESTION 14

HOTSPOT

You manage a System Center 2012 R2 Configuration Manager Service Pack 1 (SP1) stand-alone primary site. The deployment contains the servers configured as shown in the following table.

Server name	Configuration
Server1	Site server
Server2	Distribution point
Server3	SMS Provider
Server4	Reporting services point
Server5	Management point
Server6	Site database server

You are troubleshooting the hardware inventory flow from a Windows 8.1 computer named Client1. You need to verify whether the following events have occurred:

- The inventory files were uploaded from Client1.
- The inventory data was added to the site database.

Which log should you verify for each event? To answer, select the appropriate options in the answer area.

Hot Area:

Answer Area

The inventory files were uploaded from Client1:

	▼
Datatransferservice.log on Client1	
Invproc.log on Server1	
Mp_hinv.log Server5	
The application event log on Server3	

The inventory data was added to the site database:

	▼
Dataldr.log.Server1	
Datatransferservice.log on Client1	
Invproc.log on Server1	
Mp_hinv.log Server5	

Correct Answer:

Answer Area

The inventory files were uploaded from Client1:

	▼
Datatransferservice.log on Client1	
Invproc.log on Server1	
Mp_hinv.log Server5	
The application event log on Server3	

The inventory data was added to the site database:

	▼
Dataldr.log.Server1	
Datatransferservice.log on Client1	
Invproc.log on Server1	
Mp_hinv.log Server5	

*

Box 1:

MP_Hinv.log records details about the conversion of XML hardwareinventory records from clients and the copy of those files to the site server.

*

Box 2:

dataldr.log records information about the processing of Management Information Format (MIF) files and hardware inventory in the Configuration Manager database.

Is placed on the site server.

QUESTION 15

HOTSPOT

You deploy System Center 2012 R2 Configuration Manager Service Pack 1 (SP1) to a server named Server1.

Configuration Manager manages all of the client computers, including a computer named Client1.

A hardware inventory cycle is initiated on Client1.

You need to identify which Inventory classes were collected on Client1 and when the inventory was added to the site database.

Which log files should you review? To answer, select the appropriate options in the answer area.

Hot Area:



Answer Area

Client1:

Ccmexec.log
Ccmperf.log
Scanagent.log
Execmgr.log
Inventoryagent.log

Server1:

Ccm.log
Colleval.log
Dataldr.log
Sinvproc.log

Correct Answer:



Answer Area

Client1:

Ccmexec.log
Ccmperf.log
Scanagent.log
Execmgr.log
Inventoryagent.log

Server1:

Ccm.log
Colleval.log
Dataldr.log
Sinvproc.log

*

Example: The InventoryAgent.log will show that fournew attributes regarding the Class

“Department_Name” need to be collected for hardware Inventory data and that info needs to be sent to server.

Content of inventoryagent.log:

*

Example of contents of dataldr.log:

```
Collection: Namespace = \\.\root\cimv2; Query = SELECT __CLASS__, __PATH__, __RELPATH, DisplayName, InstallDate, ProdID, Publisher, V... InventoryAgent 6/22/2014 10:46:38 3864 (0xF18)
Collection: Namespace = \\.\root\cimv2; Query = SELECT __CLASS__, __PATH__, __RELPATH, ApmPresent, BatteriesAreSh... InventoryAgent 6/22/2014 10:46:38 3864 (0xF18)
Collection: Namespace = \\.\root\cimv2; Query = SELECT __CLASS__, __PATH__, __RELPATH, Department_Name, Department_Code, User_Full_Na... InventoryAgent 6/22/2014 10:46:38 3864 (0xF18)
Date/Time: 6/22/2014 10:46:53 PM Component: InventoryAgent
Thread: 3864 (0xF18) Source: collectiontask.cpp:478
Collection: Namespace = \\.\root\cimv2; Query = SELECT __CLASS__, __PATH__, __RELPATH, Department_Name, Department_Code, User_Full_Name, Users_Title FROM Department_InformationInventory; Timeout = 600
secs.
```

```
Begin transaction: Machine=PRI(GUID:FCF39551-2ED6-42AB-AAF5-F99A9A12222C)
Commit transaction: Machine=PRI(GUID:FCF39551-2ED6-42AB-AAF5-F99A9A12222C)
Done: Machine=PRI(GUID:FCF39551-2ED6-42AB-AAF5-F99A9A12222C) code=0 (13 stored procs in XH2JHAGZL.MIF)
Done blocking until completion.
No more machine MIFs to be processed, terminating thread
Shutting down Machine Writer.
Worker thread 3904 halting execution.
Finished processing 1 MIFs
Restoring machine MIF files.
```

[70-243 PDF Dumps](#)

[70-243 Study Guide](#)

[70-243 Brindumps](#)