

642-813^{Q&As}

Implementing Cisco IP Switched Networks

Pass Cisco 642-813 Exam with 100% Guarantee

Free Download Real Questions & Answers **PDF** and **VCE** file from:

<https://www.certbus.com/642-813.html>

100% Passing Guarantee
100% Money Back Assurance

Following Questions and Answers are all new published by Cisco
Official Exam Center

-  **Instant Download** After Purchase
-  **100% Money Back** Guarantee
-  **365 Days** Free Update
-  **800,000+** Satisfied Customers



QUESTION 1

Which First Hop Redundancy Protocol is an IEEE Standard?

- A. GLBP
- B. HSRP
- C. VRRP
- D. OSPF

Correct Answer: C

QUESTION 2

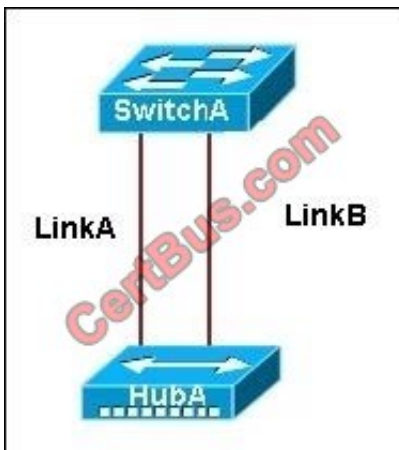
Enablement of which feature puts the port into err-disabled state when the port has PortFast enabled and it receives BPDUs?

- A. BPDU filtering
- B. BackboneFast
- C. EtherChannel
- D. BPDU guard

Correct Answer: D

QUESTION 3

Refer to the exhibit.



BPDUGuard is enabled on both ports of SwitchA. Initially, LinkA is connected and forwarding traffic. A new LinkB is then

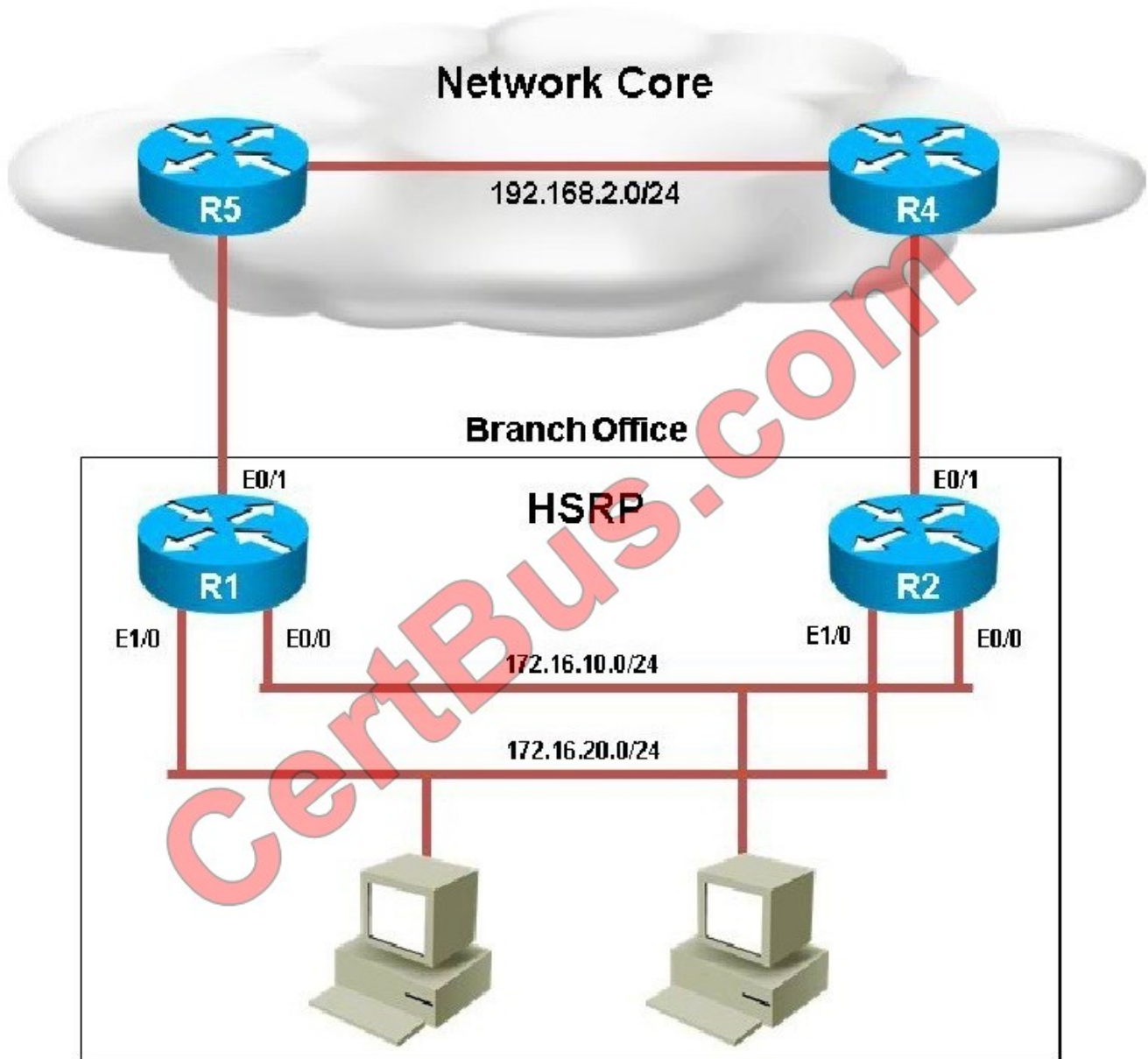
attached between SwitchA and HubA. Which two statements about the possible result of attaching the second link are true? (Choose two.)

- A. The switch port attached to LinkB does not transition to up.
- B. One or both of the two switch ports attached to the hub goes into the err-disabled state when a BPDU is received.
- C. Both switch ports attached to the hub transitions to the blocking state.
- D. A heavy traffic load could cause BPDU transmissions to be blocked and leave a switching loop.
- E. The switch port attached to LinkA immediately transitions to the blocking state.

Correct Answer: BD

QUESTION 4

Your customer has asked you to come in and verify the operation of routers R1 and R2 which are configured to use HSRP. They have questions about how these two devices will perform in the event of a device failure.



What issue is causing Router R1 and R2 to both be displayed as the HSRP active router for group 2?

- A. The HSRP group number mismatch
- B. The HSRP group authentication is misconfigured
- C. The HSRP Hello packets are blocked
- D. The HSRP timers mismatch
- E. The HSRP group priorities are different

Correct Answer: B

QUESTION 5

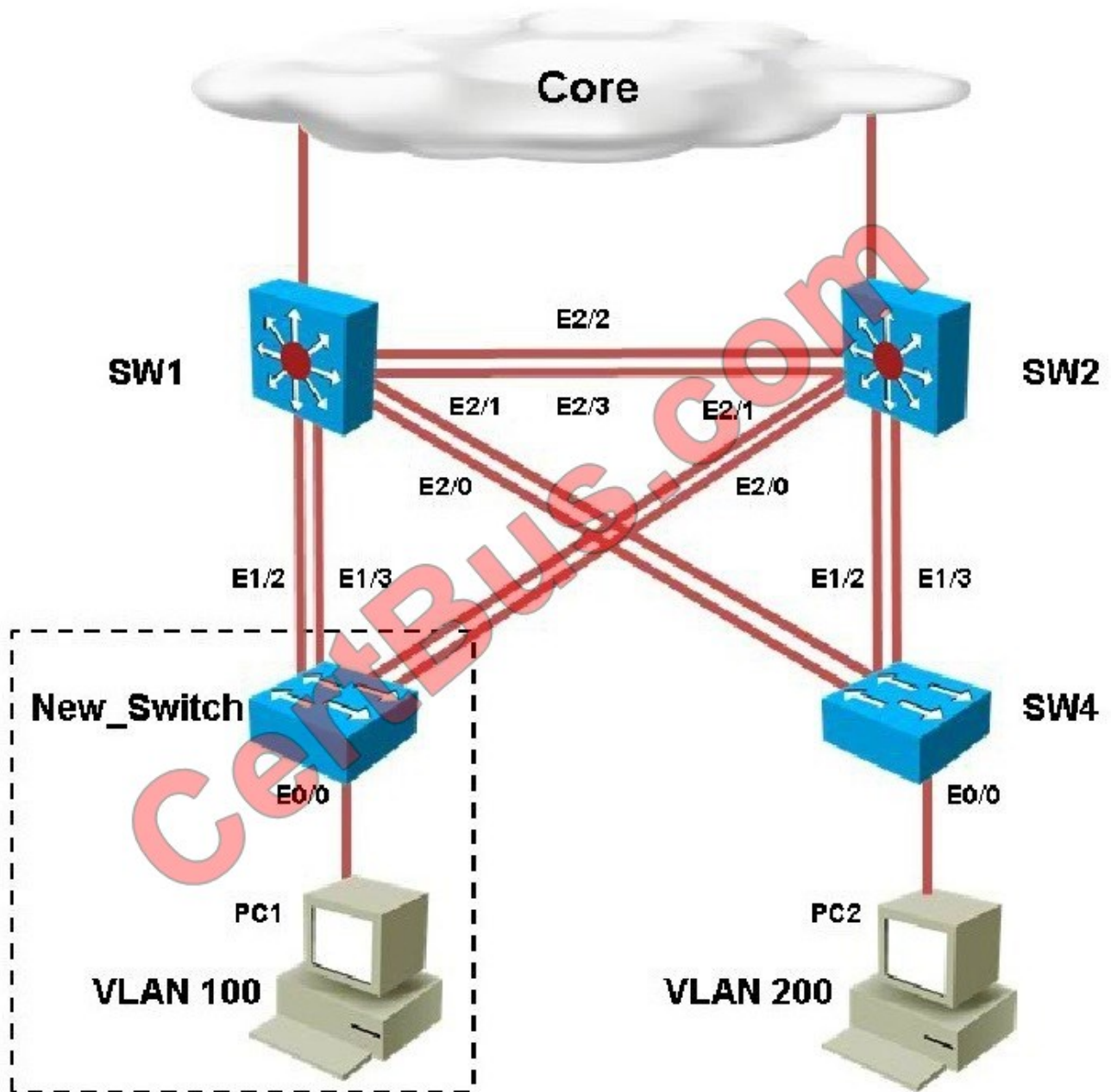
What does the command `vlan dot1q tag native` accomplish when configured under global configuration?

- A. All frames within the native VLAN are tagged, except when the native VLAN is set to 1.
- B. It allows control traffic to pass using the non-default VLAN.
- C. It removes the 4-byte dot1q tag from every frame that traverses the trunk interface(s).
- D. Control traffic is tagged.

Correct Answer: D

QUESTION 6

You have been asked to install and configure a new switch in a customer network. Use the console access to the existing and new switches to configure and verify correct device configuration.



You are connecting the New_Switch to the LAN topology; the switch has been partially configured and you need to complete the rest of configuration to enable PC1 communication with PC2. Which of the configuration is correct?

- vtp domain CCNP_TEST
vtp password cisco123
vtp version 3
vtp mode server
int e0/0
switchport mode access
switchport access vlan 100
- vtp domain CCNP_TEST
vtp password cisco123
vtp version 3
vtp mode client
int e0/0
switchport mode access
switchport access vlan 200
- vtp domain CCNP_TEST
vtp password cisco123
vtp version 2
vtp mode client
int e0/0
switchport mode access
switchport access vlan 100
- vtp domain CCNP
vtp password cisco
vtp version 3
vtp mode client
int e0/0
switchport mode access
switchport access vlan 100
- vtp domain CCNP
vtp password cisco
vtp version 2
vtp mode transparent
int e0/0
switchport mode access
switchport access vlan 200

- A. Option A
- B. Option B
- C. Option C
- D. Option D
- E. Option E

Correct Answer: D

Within any VTP, the VTP domain name must match. So, step one is to find the correct VTP name on the other switches. Logging in to SW1 and using the "show vtp status" command we see this:

```

SW1
SW1#show vtp status
VTP Version capable      : 1 to 3
VTP version running     : 3
VTP Domain Name         : CCNP
VTP Pruning Mode        : Enabled
VTP Traps Generation    : Disabled
Device ID               : aabb.cc00.2500

Feature VLAN:
-----
VTP Operating Mode      : Server
Number of existing VLANs : 8
Number of existing extended VLANs : 0
Maximum VLANs supported locally : 4096
Configuration Revision  : 11
Primary ID              : aabb.cc00.2b00
Primary Description     : SW1
MD5 digest              : 0xA2 0xFA 0x6E 0x8D 0xD0 0xDE 0x5A 0xEF
                       : 0xE3 0x65 0x9A 0xF7 0x03 0xBF 0xBA 0x10

Feature MST:

```

So we know that the VTP domain must be CCNP. This leaves only choice D and E. We also see from the topology diagram that eth 0/0 of the new switch connects to a PC in VLNA 100, so we know that this port must be an access port in VLAN 100, leaving only choice D as correct. Note that the VTP versions supported in this network are 1, 2, 3 so either VTP version 2 or 3 can be configured on the new switch.

QUESTION 7

When a Layer 2 EtherChannel is configured, which statement about placement of the IP address is true?

- A. The IP address is placed on the highest numbered member port.
- B. The IP address is placed on the port-channel logical interface.
- C. The IP address is placed on the lowest numbered member port.
- D. The IP address is assigned via DHCP only.

Correct Answer: B

QUESTION 8

A new network that consists of several switches has been connected together via trunking interfaces. If all switches currently have the default VTP domain name "null", which statement describes what happens when a domain name is

configured on one of the switches?

- A. The switch with the non-default domain name restores back to "null" upon reboot.
- B. Switches with higher revision numbers does not accept the new domain name.
- C. VTP summary advertisements are sent out of all ports with the new domain name.
- D. All other switches with the default domain name become VTP clients.

Correct Answer: C

QUESTION 9

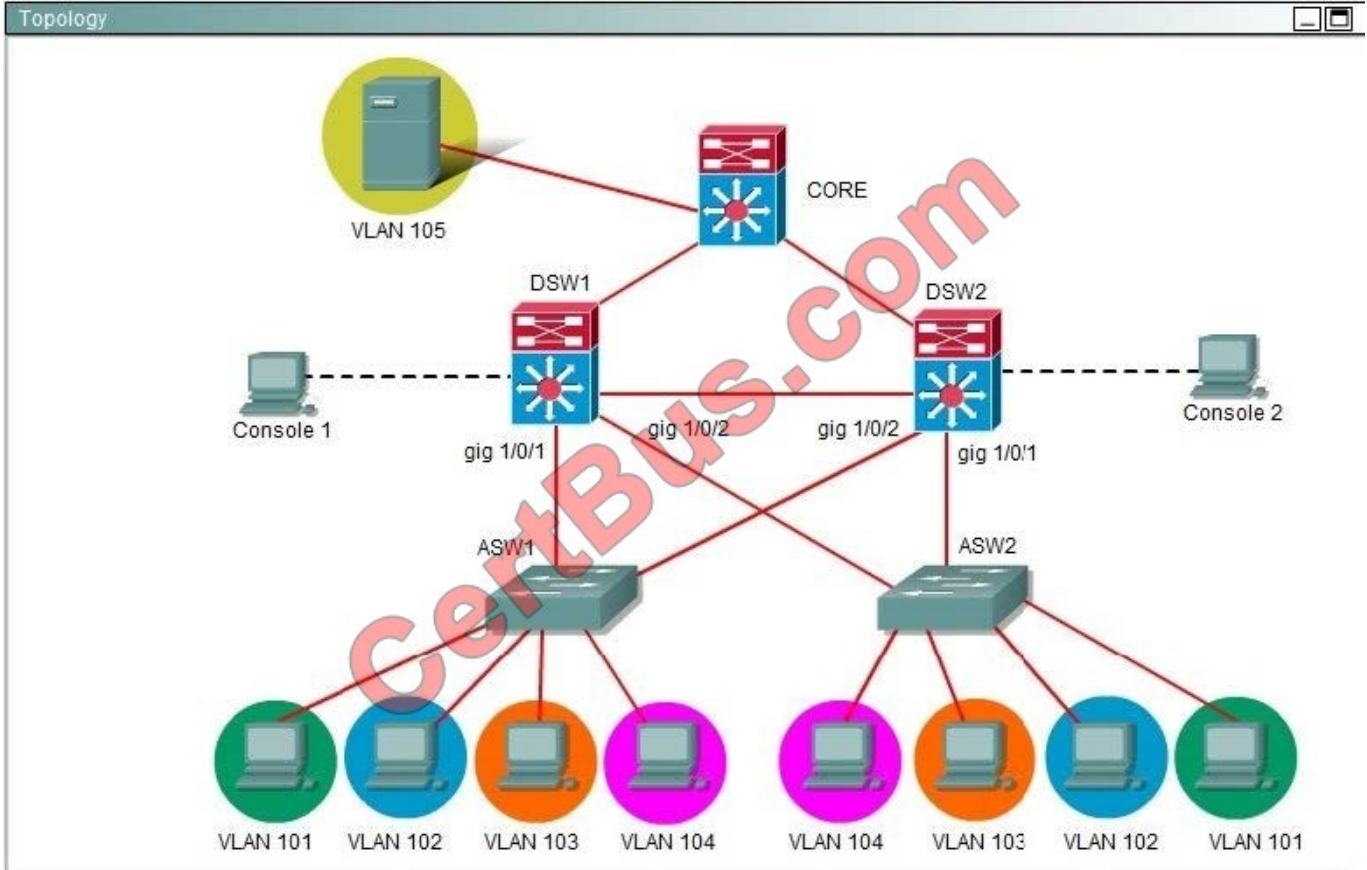
Ferris Plastics, Inc. is a medium sized company, with an enterprise network (access, distribution and core switches) that provides LAN connectivity from user PCs to corporate servers. The distribution switches are configured to use HSRP to provide a high availability solution.

?DSW1 -primary device for VLAN 101 VLAN 102 and VLAN 105

?DSW2 - primary device for VLAN 103 and VLAN 104

?A failure of GigabitEthernet1/0/1 on primary device should cause the primary device to release its status as the primary device, unless GigabitEthernet1/0/1 on backup device has also failed.

Troubleshooting has identified several issues. Currently all interfaces are up. Using the running configurations and show commands, you have been asked to investigate and respond to the following question.



All interfaces are active. DSW2 has not become the active device for the VLAN 103 HSRP group. As related to the VLAN 103 HSRP group, what can be done to make the group function properly?

- A. On DSW1, disable preempt.
- B. On DSW1, decrease the priority value to a value less than 190 and greater than 150.
- C. On DSW2, increase the priority value to a value greater 200 and less than 250.
- D. On DSW2, increase the decrement value in the track command to a value greater than 10 and less than 50.

Correct Answer: C

QUESTION 10

Which switch feature determines validity based on IP-to-MAC address bindings that are stored in a trusted database?

- A. Dynamic ARP Inspection
- B. storm control
- C. VTP pruning
- D. DHCP snooping

Correct Answer: A

QUESTION 11

Which AAA Authorization type includes PPP, SLIP, and ARAP connections?

- A. network
- B. IP mobile
- C. EXEC
- D. auth-proxy

Correct Answer: A

QUESTION 12

The command storm-control broadcast level 75 65 is configured under the switch port connected to the corporate mail server. In which three ways does this command impact the traffic? (Choose three.)

- A. SNMP traps are sent by default when broadcast traffic reaches 65% of the lower-level threshold.
- B. The switchport is disabled when unicast traffic reaches 75% of the total interface bandwidth.
- C. The switch resumes forwarding broadcasts when they are below 65% of bandwidth.
- D. Only broadcast traffic is limited by this particular storm control configuration.
- E. Multicast traffic is dropped at 65% and broadcast traffic is dropped at 75% of the total interface bandwidth.
- F. The switch drops broadcasts when they reach 75% of bandwidth.

Correct Answer: CDF

[Latest 642-813 Dumps](#)

[642-813 Study Guide](#)

[642-813 Exam Questions](#)

To Read the [Whole Q&As](#), please purchase the [Complete Version](#) from [Our website](#).

Try our product !

100% Guaranteed Success

100% Money Back Guarantee

365 Days Free Update

Instant Download After Purchase

24x7 Customer Support

Average 99.9% Success Rate

More than 800,000 Satisfied Customers Worldwide

Multi-Platform capabilities - [Windows](#), [Mac](#), [Android](#), [iPhone](#), [iPod](#), [iPad](#), [Kindle](#)

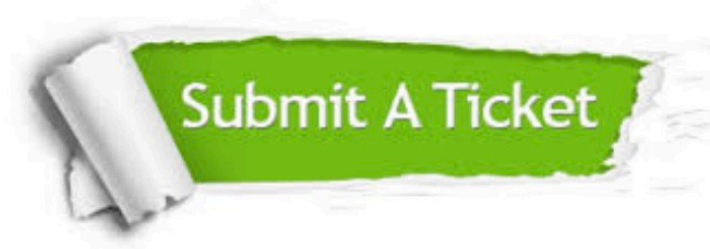
We provide exam PDF and VCE of Cisco, Microsoft, IBM, CompTIA, Oracle and other IT Certifications. You can view Vendor list of All Certification Exams offered:

<https://www.certbus.com/allproducts>

Need Help

Please provide as much detail as possible so we can best assist you.

To update a previously submitted ticket:



 <p>One Year Free Update Free update is available within One Year after your purchase. After One Year, you will get 50% discounts for updating. And we are proud to boast a 24/7 efficient Customer Support system via Email.</p>	 <p>Money Back Guarantee To ensure that you are spending on quality products, we provide 100% money back guarantee for 30 days from the date of purchase.</p>	 <p>Security & Privacy We respect customer privacy. We use McAfee's security service to provide you with utmost security for your personal information & peace of mind.</p>
---	---	--

Any charges made through this site will appear as Global Simulators Limited.

All trademarks are the property of their respective owners.

Copyright © certbus, All Rights Reserved.