

642-661^{Q&As}

CCIP Configuring BGP on Cisco Routers (BGP)

Pass Cisco 642-661 Exam with 100% Guarantee

Free Download Real Questions & Answers **PDF** and **VCE** file from:

<https://www.certbus.com/642-661.html>

100% Passing Guarantee
100% Money Back Assurance

Following Questions and Answers are all new published by Cisco
Official Exam Center

- ⚙ **Instant Download** After Purchase
- ⚙ **100% Money Back** Guarantee
- ⚙ **365 Days** Free Update
- ⚙ **800,000+** Satisfied Customers

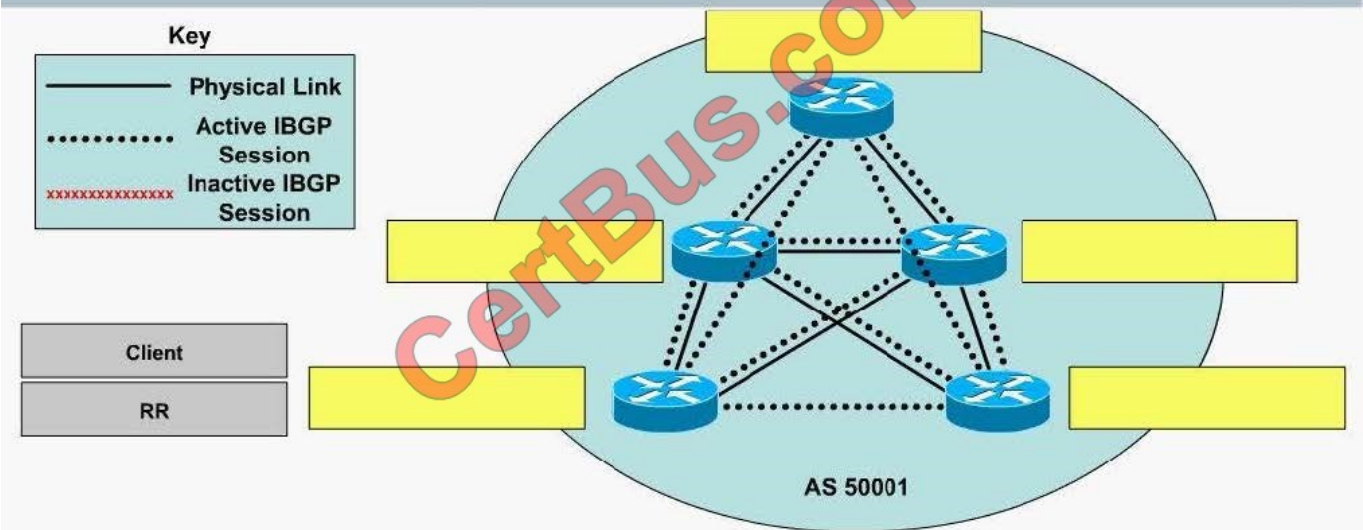


QUESTION 1

Select and Place:

Based on the physical topology of AS 50001, to reduce the IBGP full-mesh requirements, only two redundant route reflectors (RR) will be used in a single cluster. In this case, which two routers should be the RRs and which three routers should be the clients based on the recommended route reflector design rule?

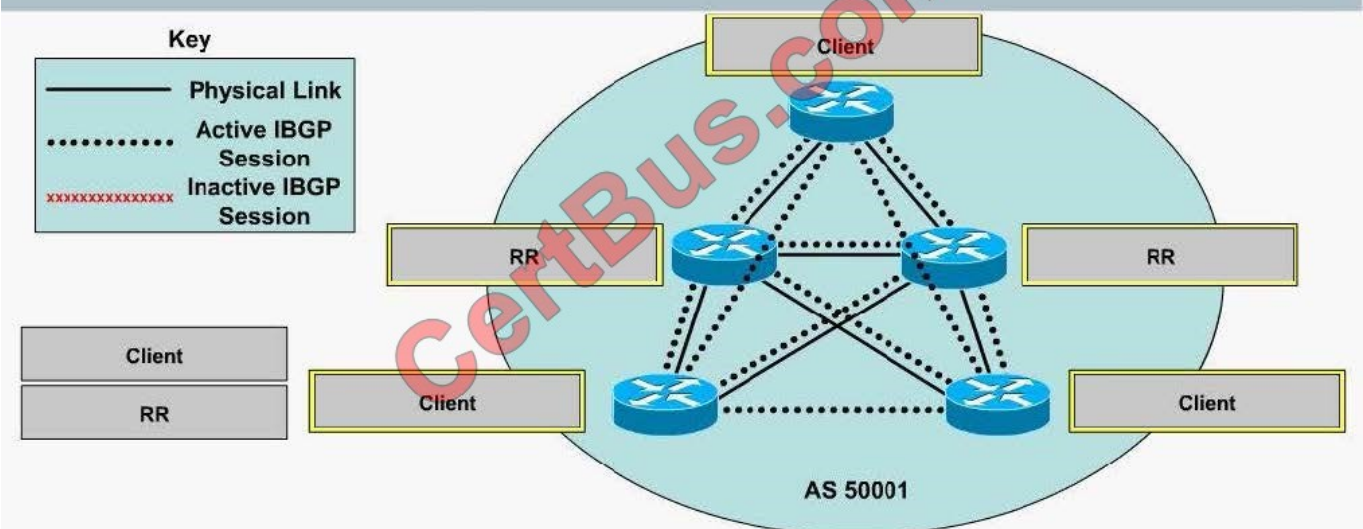
Tasks: 1) Drag the matching text labels given on the left side of the topology to the correct targets on the right to identify these routers. 2) Also, identify all the unnecessary IBGP sessions once the redundant RRs have been configured by clicking on the IBGP session links to disable them. You can re-enable the IBGP session link by clicking on it again.



Correct Answer:

Based on the physical topology of AS 50001, to reduce the IBGP full-mesh requirements, only two redundant route reflectors (RR) will be used in a single cluster. In this case, which two routers should be the RRs and which three routers should be the clients based on the recommended route reflector design rule?

Tasks: 1) Drag the matching text labels given on the left side of the topology to the correct targets on the right to identify these routers. 2) Also, identify all the unnecessary IBGP sessions once the redundant RRs have been configured by clicking on the IBGP session links to disable them. You can re-enable the IBGP session link by clicking on it again.



QUESTION 2

Which two command scenarios will alter the BGP local-preference attribute to 120?(Choose two)

- A. R(config-route-map)#set local-preference 120
- B. R(config-router)#neighbor ip-address local-preference 120
- C. R(config-router)#bgp default local-preference 120
- D. R(config-router)#neighbor ip-address prefix-list test in local-preference 120

Correct Answer: AC

QUESTION 3

omitted) ! router bgp 65500 neighbor 172.25.25.25 remote-as 65501 neighbor 172.22.22.25 remote-as 65502 neighbor 172.23.23.22 remote-as 65503 ! (output omitted)

You work as a network technician. Study the exhibit carefully. Which of the following is the correct set of commands to establish a minimum routing update interval of 60 seconds for all neighbors?

- A. R-3(config-router)#neighbor advertisement-interval 60
- B. R-3(config-router)#neighbor 172.25.25.25 advertisement-interval 60 R-3(config-router)#neighbor 172.25.22.22 advertisement-interval 60 R-3(config-router)#neighbor 172.23.23.23 advertisement-interval 60
- C. R-3(config-router)#bgp neighbor advertisement-interval 60
- D. R-3(config-router)#timersbgp 60 60 60

Correct Answer: B

QUESTION 4

Which configuration will enable the R1 router in the AS51003 sub-AS (member-AS) as a route reflector with neighbors 10.1.1.1 and 10.2.2.2 as its route-reflector clients?

- A. ! R1 routerbgp 51003 bgp confederation identifier 55111 bgp confederation peers 51001 51002 neighbor 10.1.1.1 remote-as 51001 neighbor 10.2.2.2 remote-as 51002 neighbor 10.1.1.1 route-reflector-client neighbor 10.2.2.2 route-reflector-client
- B. ! R1 routerbgp 55111 bgp confederation identifier 51003 neighbor 10.1.1.1 remote-as 51003 neighbor 10.2.2.2 remote-as 51003 neighbor 10.1.1.1 route-reflector-client neighbor 10.2.2.2 route-reflector-client
- C. ! R1 routerbgp 55111 bgp confederation identifier 51003 neighbor 10.1.1.1 remote-as 55111 neighbor 10.2.2.2 remote-as 55111 neighbor 10.1.1.1 route-reflector-client neighbor 10.2.2.2 route-reflector-client
- D. ! R1 routerbgp 51003 bgp confederation identifier 55111 bgp confederation peers 51001 51002 neighbor 10.1.1.1

remote-as 51003 neighbor 10.2.2.2 remote-as 51003 neighbor 10.1.1.1 route-reflector-client neighbor 10.2.2.2 route-reflector-client

Correct Answer: D

QUESTION 5

What is the effect on existing BGP connections when Path MTU (PMTU) discovery is enabled?

- A. The connections are reset and negotiate MTU size.
- B. There is no effect on existing connections.
- C. After timing out, they will inherit the configured MTU size.
- D. They dynamically renegotiate the new MTU size.

Correct Answer: B

QUESTION 6

Which statement is true about BGP peer group configurations?

- A. The use of peer group will increase the CPU load of the BGP process.
- B. Peer group is used to reduce the full mesh IBGP requirements for Transit AS.
- C. Peer group is used to sub-divide an AS into multiple sub-ASs to increase scalability.
- D. The use of peer groups allows the router to build BGP update only once for the entire peer group.

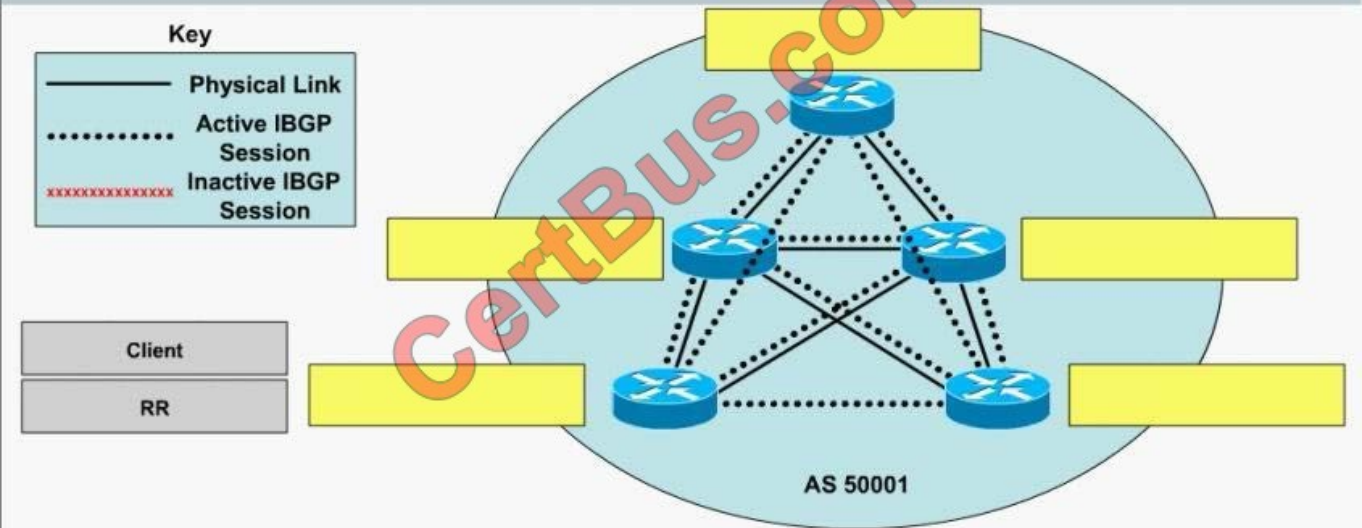
Correct Answer: D

QUESTION 7

Select and Place:

Based on the physical topology of AS 50001, to reduce the IBGP full-mesh requirements, only two redundant route reflectors (RR) will be used in a single cluster. In this case, which two routers should be the RRs and which three routers should be the clients based on the recommended route reflector design rule?

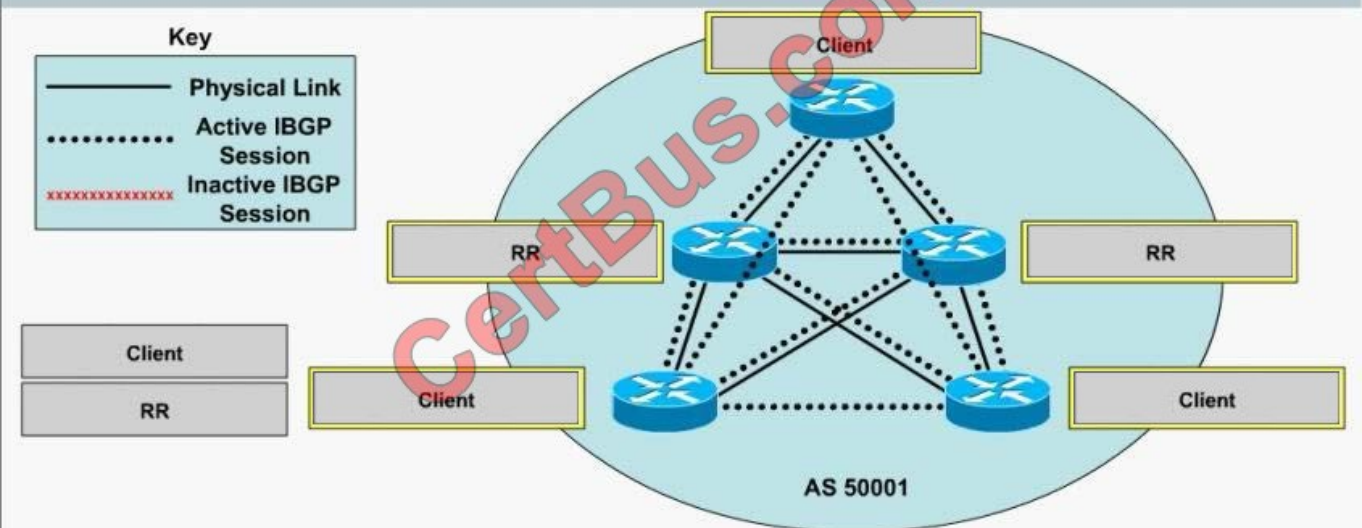
Tasks: 1) Drag the matching text labels given on the left side of the topology to the correct targets on the right to identify these routers. 2) Also, identify all the unnecessary IBGP sessions once the redundant RRs have been configured by clicking on the IBGP session links to disable them. You can re-enable the IBGP session link by clicking on it again.



Correct Answer:

Based on the physical topology of AS 50001, to reduce the IBGP full-mesh requirements, only two redundant route reflectors (RR) will be used in a single cluster. In this case, which two routers should be the RRs and which three routers should be the clients based on the recommended route reflector design rule?

Tasks: 1) Drag the matching text labels given on the left side of the topology to the correct targets on the right to identify these routers. 2) Also, identify all the unnecessary IBGP sessions once the redundant RRs have been configured by clicking on the IBGP session links to disable them. You can re-enable the IBGP session link by clicking on it again.



QUESTION 8

Based on the show route-map test output shown in the exhibit, which matching routes will be set to a weight of 150?

```
PIR1#show route-map test
route-map test, permit, sequence 10
  Match clauses:
    ip address prefix-lists: test
    as-path (as-path filter): 1 2
    community (community-list filter): 1 2
  Set clauses:
    weight 150
  Policy routing matches: 0 packets, 0 bytes
```

- A. Routes that match the prefix-list named test AND match the as-path filter 1 AND 2 AND match the community-list 1 AND 2
- B. Routes that match the prefix-list named test OR match the as-path filter 1 OR 2 OR match the community-list 1 OR 2
- C. Routes that match the prefix-list named test OR match the as-path filter 1 AND 2 OR match the community-list 1 AND 2
- D. Routes that match the prefix-list named test AND also match either the as-path filter 1 OR 2 AND also match either the community-list 1 OR 2

Correct Answer: D

QUESTION 9

AS 65101 is a dual home customer. When starting the EBGp sessions with both ISPs announcing its networks, which two statements are true about the default behavior of BGP? (Choose two)

- A. The default BGP route selection prefers the shortest AS-Path.
- B. If the AS-Paths are equal in length, BGP prefers the route from the peer with the highest router ID.
- C. The bandwidth available to reach the ISPs is not taken into consideration in the BGP path selection process.
- D. Using the default BGP "maximum-paths" of 4, BGP can load balance the outbound traffic from the multihomed customer between the two ISPs.

Correct Answer: AC

QUESTION 10

Every time a flap occurs on a route, the route receives _____.

- A. 750 per-flap penalty points which are user configurable.
- B. 1500 per-flap penalty points which are user configurable.
- C. 2000 per-flap penalty points which are user configurable.
- D. 1000 per-flap penalty points which are not user configurable.

Correct Answer: D

QUESTION 11

Which two statements are true about route reflector configurations? (Choose two)

- A. Clients must have IBGP sessions to the other clients and to the route reflector.
- B. The neighbor ip-address route-reflector-client configuration command is required on the route reflectors.
- C. When a cluster contains multiple route reflectors, all the route reflectors in the cluster need to be configured with the same Cluster-ID.
- D. When a cluster contains multiple route reflectors, thebgp cluster-id cluster-id configuration command is required on the clients on the route reflectors.

Correct Answer: BC

QUESTION 12

Select and Place:

Drag the method used to influence BGP path selection on the left to the traffic flow it influences on the right.

setting the weight	used to influence the outbound traffic flow
setting the MED	
setting the local preference	used to influence the inbound traffic flow
setting the admin distance	
using recursive route lookup	
using AS-path prepending	

Correct Answer:

Drag the method used to influence BGP path selection on the left to the traffic flow it influences on the right.

setting the admin distance
using recursive route lookup

used to influence the outbound traffic flow
setting the weight
setting the local preference

used to influence the inbound traffic flow
setting the MED
using AS-path prepending

[Latest 642-661 Dumps](#)

[642-661 PDF Dumps](#)

[642-661 Practice Test](#)

To Read the [Whole Q&As](#), please purchase the [Complete Version](#) from [Our website](#).

Try our product !

100% Guaranteed Success

100% Money Back Guarantee

365 Days Free Update

Instant Download After Purchase

24x7 Customer Support

Average 99.9% Success Rate

More than 800,000 Satisfied Customers Worldwide

Multi-Platform capabilities - [Windows](#), [Mac](#), [Android](#), [iPhone](#), [iPod](#), [iPad](#), [Kindle](#)

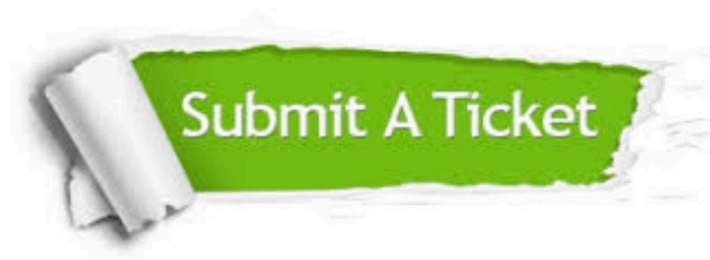
We provide exam PDF and VCE of Cisco, Microsoft, IBM, CompTIA, Oracle and other IT Certifications.
You can view Vendor list of All Certification Exams offered:

<https://www.certbus.com/allproducts>

Need Help

Please provide as much detail as possible so we can best assist you.

To update a previously submitted ticket:



 One Year Free Update Free update is available within One Year after your purchase. After One Year, you will get 50% discounts for updating. And we are proud to boast a 24/7 efficient Customer Support system via Email.	 Money Back Guarantee To ensure that you are spending on quality products, we provide 100% money back guarantee for 30 days from the date of purchase.	 Security & Privacy We respect customer privacy. We use McAfee's security service to provide you with utmost security for your personal information & peace of mind.
---	---	--

Any charges made through this site will appear as Global Simulators Limited.

All trademarks are the property of their respective owners.

Copyright © certbus, All Rights Reserved.