

642-515^{Q&As}

Securing Networks with ASA Advanced

Pass Cisco 642-515 Exam with 100% Guarantee

Free Download Real Questions & Answers **PDF** and **VCE** file from:

<https://www.certbus.com/642-515.html>

100% Passing Guarantee
100% Money Back Assurance

Following Questions and Answers are all new published by Cisco
Official Exam Center

-  **Instant Download** After Purchase
-  **100% Money Back** Guarantee
-  **365 Days** Free Update
-  **800,000+** Satisfied Customers



QUESTION 1

The P4S security department would like to apply specific restrictions to one network user, Bob, because he works from home and accesses the corporate network from the outside interface of the security appliance. P4S decides to control network access for this user by using the downloadable ACL feature of the security appliance. Authentication of inbound traffic is already configured on the security appliance, and Bob already has a user account on the Cisco Secure ACS. Which three tasks should be completed in order to achieve the goal of limiting network access for Bob via downloadable ACLs? (Choose three.)

- A. Configure the security appliance to use downloadable ACLs.
- B. Configure the downloadable ACLs on the Cisco Secure ACS.
- C. Attach the downloadable ACL to the user profile for Bob on the Cisco Secure ACS.
- D. Configure the Cisco Secure ACS to use downloadable ACLs.

Correct Answer: BCD

QUESTION 2

According to the following exhibit. When a host on the inside network attempted an HTTP connection to a host at IP address 172.26.10.100, which address pool will be used by the Cisco ASA security appliance for the NAT?

#	Type	Original			Translated		
		Source	Destination	Service	Interface	Address	Service
dnz (1 Static rules)							
1	Static	172.16.8.10			outside	192.168.8.15	
inside (3 Dynamic rules)							
1	Dynamic Policy	inside-network/24	172.26.8.0/24	http	outside	192.168.8.101 - 192.168.8.105	
2	Dynamic Policy	inside-network/24	192.168.8.0/24	http	outside	192.168.8.106 - 192.168.8.110	
3	Dynamic	inside-network/24			outside	192.168.8.20 - 192.168.8.100	

- A. 192.168.8.101 - 192.168.8.105
- B. 192.168.8.20 - 192.168.8.100
- C. 192.168.8.106 - 192.168.8.110
- D. 192.168.8.20 - 192.168.8.110

Correct Answer: B

QUESTION 3

You are the administrator for Cisco ASA security appliances that are used for site-to-site VPNs between remote and

corporate offices. You have used the Service Policy Rule Wizard within ASDM to configure low-latency queuing for unified communications on all the appropriate ASAs. Users are still having issues with unified communications between the remote and corporate offices. Assuming that the Cisco Unified Communications equipment is functioning properly and that the VPN configurations are correct, which of these choices is most likely the cause of the problems?

- A. The DSCP, expedite forward, ef (46), was used to determine unified communications traffic within the Service Policy Rule Wizard.
- B. The tunnel group and DSCP traffic matching criteria were configured within the Service Policy Rule Wizard.
- C. Both a policing and priority queue must be applied on the interface to expedite the voice and control data flows.
- D. A priority queue must be created on the interface where the site-to-site VPN tunnel is terminated.

Correct Answer: D

QUESTION 4

As the administrator of a Cisco ASA security appliance, you have been tasked to configure SSL VPNs to require digital certificates.

Which four configuration options are available on the Cisco ASA security appliance for digital certificate management for SSL VPNs ? (Choose four.)

- A. The Cisco ASA security appliance can be configured to have a local CA that is subordinate to an external CA.
- B. The subordinate local CA on the Cisco ASA security appliance can issue certificates to users who require a certificate for their SSL VPN connections.
- C. The Cisco ASA security appliance can generate a self-signed certificate to be used as its identity certificate for SSL VPN connections.
- D. The Cisco ASA security appliance can be configured to retrieve its identity certificate from an external CA.
- E. The Cisco ASA security appliance can be configured as a standalone local CA.
- F. The local CA on the Cisco ASA security appliance can issue certificates to users who require certificates for SSL VPN connections.
- G. An external CA must be used for SSL VPN users who require certificates for their SSL VPN connections.
- H. The Cisco ASA security appliance must be configured to retrieve its identity certificate from an external CA.

Correct Answer: CDEF

QUESTION 5

Cisco ASA 5505 Adaptive Security Appliance is designed for providing high-performance security services. Study the following exhibit carefully. You are asked to configure a Cisco ASA 5505 Adaptive Security Appliance as an Easy VPN hardware client. When the telecommuter using the ASA 5505 Adaptive Security Appliance for remote access first tries to connect to resources on the corporate network, he is prompted for authentication. Which two group policy features will require authentication, even if a username and password are configured on the Easy VPN hardware client? (Select two.)

Configuration > Remote Access VPN > Easy VPN Remote

Configure this feature to enable the ASA to act as an Easy VPN Remote device. The ASA can then establish a VPN tunnel to a Cisco VPN 3000 Concentrator, IOS-based router, or firewall acting as an Easy VPN Server.

Enable Easy VPN Remote

Mode

Client mode Network extension mode

Auto connect

Group Settings

Pre-shared Key

Group Name:

Group Password: Confirm Password:

X.509 Certificate

Select Certificate: Send certificate chain

To configure certificates, go to [Identity Certificates](#).

User Settings

Username:

User Password: Confirm Password:

Easy VPN Server To Be Added

Name or IP Address:

Add >> << Remove

Easy VPN Server(s)

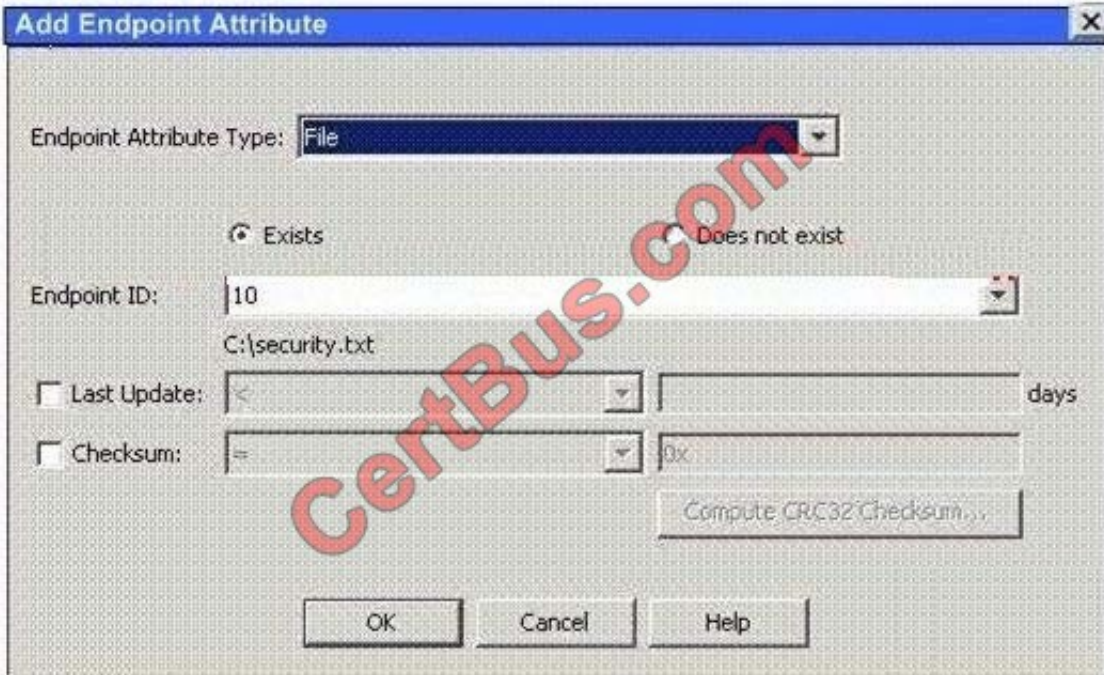
Move Up Move Down

- A. Individual User Authentication
- B. Certificate Authentication
- C. Secure Unit Authentication
- D. Extended Authentication
- E. Remote User Authentication
- F. Group Authentication

Correct Answer: AC

QUESTION 6

DAP is short for Dynamic Access Policies. You are configuring a DAP for SSL VPN connections to your Cisco ASA security appliance. You add an Endpoint Attribute Type of "File" and select the Endpoint ID of "10," according to the presented configuration. Within which area of the Cisco ASA security appliance configuration is this endpoint attribute defined?



- A. SSL VPN connection profile
- B. SSL VPN group policy
- C. user-specific policy
- D. Cisco Secure Desktop
- E. DAP policy

Correct Answer: D

QUESTION 7

For configuring VLAN trunking on a security appliance interface, which three actions are mandatory? (Choose three.)

- A. associating a logical interface with a physical interface
- B. specifying a VLAN ID for asubinterface
- C. specifying a name for asubinterface
- D. specifying the maximum transmission unit for asubinterface

Correct Answer: ABC

QUESTION 8

Annie is a network administrator of her company. She is responsible for a Cisco ASA security appliance. Using a valid identity certificate from her certificate authority, she has created the necessary configuration for remote-access VPN

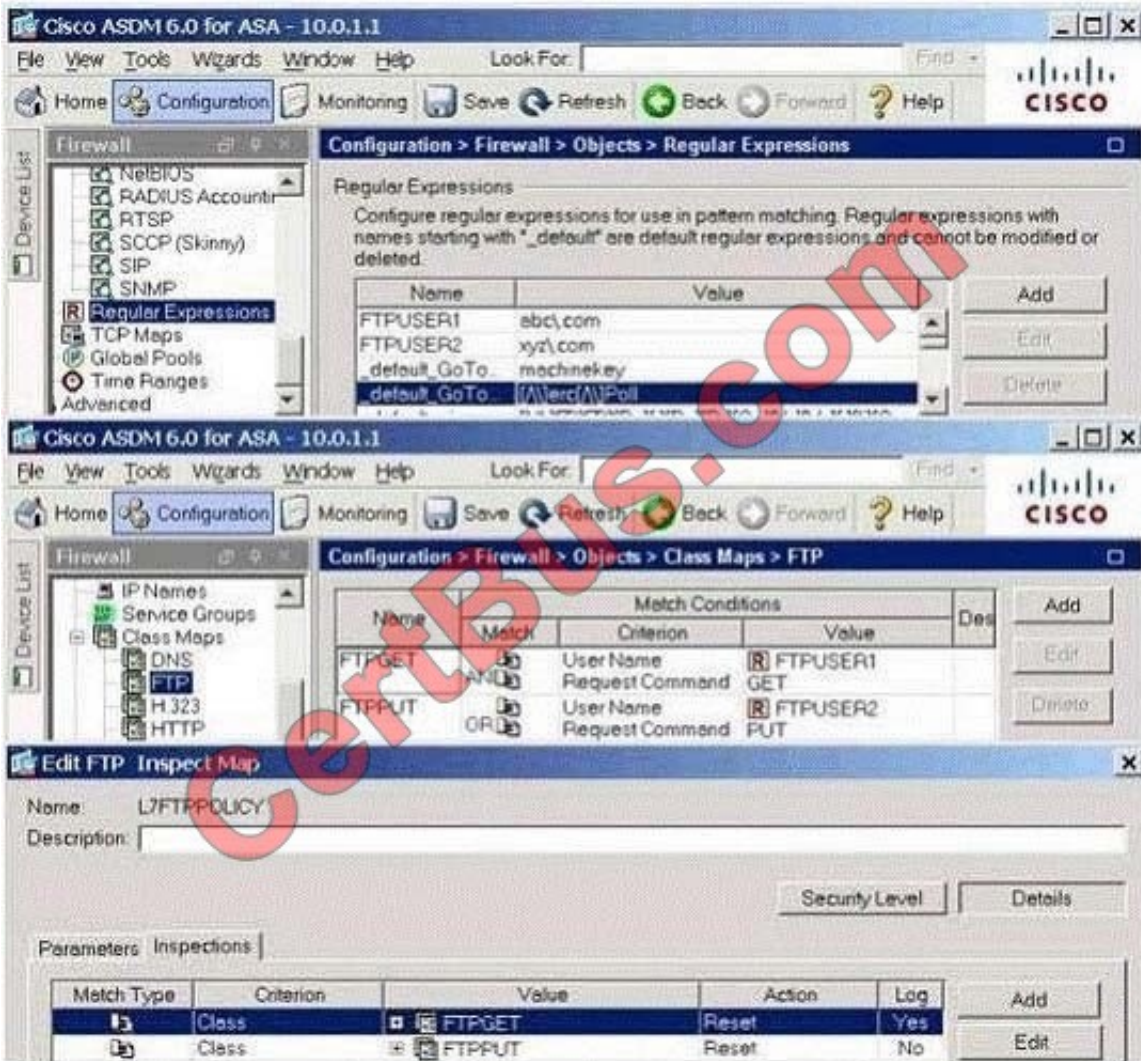
tunnels by use of the IPsec VPN Wizard. When she tests the remote-access VPN, the VPN tunnel does not come up. If the remote-access VPN configuration created by the wizard is correct and valid certificates are being used by the Cisco ASA security appliance and Cisco VPN Client, which corrective action should be configured or corrected for the VPN tunnel to come up properly?

- A. The IKE phase two configuration is not part of the IPsec VPN Wizard configuration and must be configured.
- B. NAT-Transparency configuration is not part of the IPsec VPN Wizard configuration and must be configured.
- C. The IKE phase one configuration is not part of the IPsec VPN Wizard configuration and must be configured.
- D. The mapping of digital certificates to connection profile is not part of the IPsec VPN Wizard configuration and must be configured.
- E. The crypto ACL configuration is not part of the IPsec VPN Wizard configuration and must be configured.

Correct Answer: D

QUESTION 9

Study the exhibit below carefully. Apply the FTP inspection map named L7FTPPOLICY to the outside interface of the security appliance. Because of this configuration, which action will the security appliance take on FTP traffic entering its outside interface?



A. resets and logs connections from abc.com users when they attempt to retrieve files via FTP; resets all FTP connections from xyz.com users; resets any user connections that attempt to deliver files via FTP

B. resets and logs connections from abc.com users only when they attempt to retrieve files via FTP; resets connections from xyz.com users only when they attempt to deliver files via FTP

C. resets and logs connections from any user who attempts to retrieve files via FTP; resets connections from xyz.com users who attempt to deliver files via FTP

D. resets connections from abc.com and xyz.com users when they attempt to retrieve files via FTP; logs any user connections that attempt to deliver files via FTP

Correct Answer: A

QUESTION 10

While implementing QoS, which two types of queues are available on the Cisco ASA security appliance? (Choose two.)

A. best effort queue

- B. round robin queue
- C. weighted fair
- D. low latency queue

Correct Answer: AD

QUESTION 11

What is the reason that you want to configure VLANs on a security appliance interface?

- A. for use in multiple contextmode, where you can map only VLAN interfaces to contexts
- B. for use in conjunction with device-level failover to increase the reliability of your security appliance
- C. to increase the number of interfaces available to the network without adding additional physical interfaces or security appliances
- D. for use in transparent firewall mode, where only VLAN interfaces are used

Correct Answer: C

QUESTION 12

Which two options are correct about the threat detection feature of the Cisco ASA adaptive security appliance? (Choose two.)

- A. The security appliance scanning threat detection feature is based on traffic signatures.
- B. The threat detection feature can help you determine the level of severity for packets that are detected and dropped by the security appliance inspection engines.
- C. Because of their impact on performance, both basic threat detection and scanning threat detection are disabled by default.
- D. Scanning threat detection detects network sweeps and scans and optionally takes appropriate preventative action.

Correct Answer: BD

[Latest 642-515 Dumps](#)

[642-515 PDF Dumps](#)

[642-515 VCE Dumps](#)

To Read the [Whole Q&As](#), please purchase the [Complete Version](#) from [Our website](#).

Try our product !

100% Guaranteed Success

100% Money Back Guarantee

365 Days Free Update

Instant Download After Purchase

24x7 Customer Support

Average 99.9% Success Rate

More than 800,000 Satisfied Customers Worldwide

Multi-Platform capabilities - [Windows](#), [Mac](#), [Android](#), [iPhone](#), [iPod](#), [iPad](#), [Kindle](#)

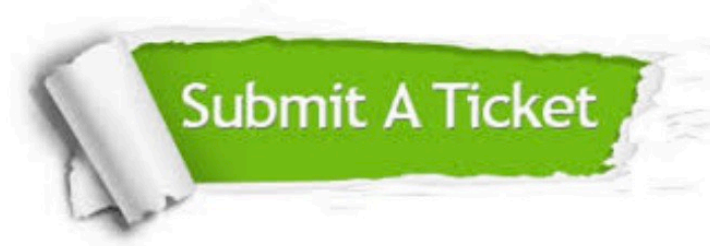
We provide exam PDF and VCE of Cisco, Microsoft, IBM, CompTIA, Oracle and other IT Certifications. You can view Vendor list of All Certification Exams offered:

<https://www.certbus.com/allproducts>

Need Help

Please provide as much detail as possible so we can best assist you.

To update a previously submitted ticket:



 <p>One Year Free Update Free update is available within One Year after your purchase. After One Year, you will get 50% discounts for updating. And we are proud to boast a 24/7 efficient Customer Support system via Email.</p>	 <p>Money Back Guarantee To ensure that you are spending on quality products, we provide 100% money back guarantee for 30 days from the date of purchase.</p>	 <p>Security & Privacy We respect customer privacy. We use McAfee's security service to provide you with utmost security for your personal information & peace of mind.</p>
---	---	--

Any charges made through this site will appear as Global Simulators Limited.

All trademarks are the property of their respective owners.

Copyright © certbus, All Rights Reserved.