

# 640-864<sup>Q&As</sup>

Designing for Cisco Internetwork Solutions

## Pass Cisco 640-864 Exam with 100% Guarantee

Free Download Real Questions & Answers **PDF** and **VCE** file from:

<https://www.certbus.com/640-864.html>

100% Passing Guarantee  
100% Money Back Assurance

Following Questions and Answers are all new published by Cisco  
Official Exam Center

- ⚙️ **Instant Download** After Purchase
- ⚙️ **100% Money Back** Guarantee
- ⚙️ **365 Days** Free Update
- ⚙️ **800,000+** Satisfied Customers



#### QUESTION 1

What network virtualization technology can be leveraged within the data center to reduce the number of physical devices?

- A. VLANs
- B. VPLS
- C. VDC
- D. VSS

Correct Answer: C

---

#### QUESTION 2

When you are designing a large IPv6 multivendor network, which IGP does Cisco recommend that you use?

- A. OSPFv3
- B. EIGRP for IPv6
- C. BGP
- D. RIPng

Correct Answer: A

---

#### QUESTION 3

Which two routing protocols converge most quickly? (Choose two.)

- A. RIPv1
- B. RIPv2
- C. BGP
- D. OSPF
- E. EIGRP

Correct Answer: DE

---

#### QUESTION 4

What branch design supports 100 to 1000 users and integrates ASA firewalls?

- A. small
- B. medium
- C. large
- D. extra large

Correct Answer: C

---

#### **QUESTION 5**

A company requires a managed WAN solution that supports Layer 2 adjacency across remote offices for applications and services. What solution should be selected?

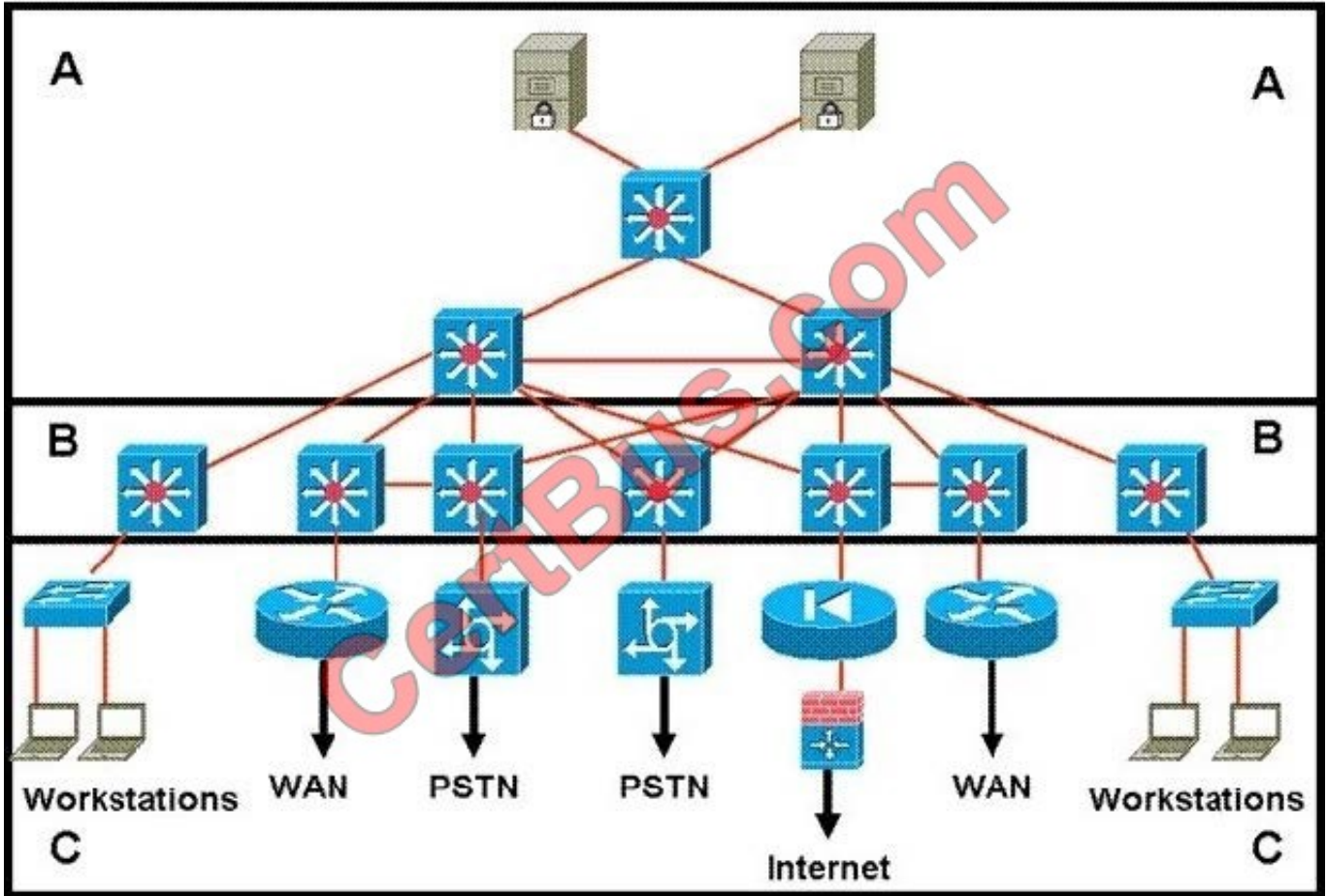
- A. DMVPN
- B. MPLS
- C. VPLS
- D. FR

Correct Answer: C

---

#### **QUESTION 6**

Refer to the exhibit.



Which statement accurately represents the characteristics of the core layer in this design?

- A. QoS should only be performed only in the core.
- B. Load balancing should never be implemented or used.
- C. Access lists should be used in the core to perform packet manipulation.
- D. Partial mesh should be used as long as it is connected to each device by multiple paths.
- E. Policy-based traffic control should be implemented to enable prioritization and ensure the best performance for all time-critical applications.

Correct Answer: D

**QUESTION 7**

Which two of these practices are considered to be best practices when designing the access layer for the enterprise campus? (Choose two.)

- A. Implement all of the services (QoS, security, STP, and so on) in the access layer, offloading the work from the distribution and core layers.
- B. Always use a Spanning Tree Protocol; preferred is Rapid PVST+.

- C. Use automatic VLAN pruning to prune unused VLANs from trunked interfaces to avoid broadcast propagation.
- D. Avoid wasted processing by disabling STP where loops are not possible.
- E. Use VTP transparent mode to decrease the potential for operational error.

Correct Answer: BE

When designing the building access layer, you must consider the number of users or ports required to size up the LAN switch. Connectivity speed for each host should also be considered. Hosts might be connected using various technologies such as Fast Ethernet, Gigabit Ethernet, or port channels. The planned VLANs enter into the design.

Performance in the access layer is also important. Redundancy and QoS features should be considered. The following are recommended best practices for the building access layer:

Limit VLANs to a single closet when possible to provide the most deterministic and highly available topology.

- Use Rapid Per-VLAN Spanning Tree Plus (RPVST+) if STP is required. It provides the faster convergence than traditional 802.1d default timers.

- Set trunks to ON and ON with no-negotiate.

- Manually prune unused VLANs to avoid broadcast propagation (commonly done on the distribution switch).

- Use VLAN Trunking Protocol (VTP) Transparent mode, because there is little need for a common VLAN database in hierarchical networks.

- Disable trunking on host ports, because it is not necessary. Doing so provides more security and speeds up PortFast.

- Consider implementing routing in the access layer to provide fast convergence and Layer 3 load balancing.

- Use the switchport host commands on server and end-user ports to enable PortFast and disable channeling on these ports.

- Use Cisco STP Toolkit, which provides

- PortFast: Bypass listening-learning phase for access ports ?Loop Guard. Prevents alternate or root port from becoming designated in absence of bridge

- protocol data units (BPDU)

- Root Guard. Prevents external switches from becoming root ?BPDU Guard. Disables PortFast-enabled port if a BPDU is received Cisco Press CCDA 640

864 Official Certification Guide Fourth Edition, Chapter 3, Page 85

---

### QUESTION 8

You are tasked with designing a new branch office that will support 75 users with possible expansion in the future and will need a highly available network. Which of the branch design profiles should be implemented?

- A. large branch design
- B. medium branch design
- C. teleworker design
- D. small branch design

Correct Answer: B

Medium Branch Design The medium branch design is recommended for branch offices of 50 to 100 users, which is similar to the small branch but with an additional access router in the WAN edge (slightly larger) allowing for redundancy services. Typically, two 2921 or 2951 routers are used to support the WAN, and separate access switches are used to provide LAN connectivity.

---

### QUESTION 9

What is the recommended spanning tree protocol to use for all Layer 2 deployments in a branch office environment?

- A. CST
- B. RSPT
- C. PVST
- D. MISTP
- E. Rapid PVST +

Correct Answer: E

---

### QUESTION 10

During which phase of the PPDIOO model would you conduct interviews with supporting staff to develop and propose a viable solution?

- A. Prepare
- B. Plan
- C. Design

D. Implement

E. Operate

F. Optimize

Correct Answer: A

PPDIOO Phase	Description
Prepare	Establishes organization and business requirements, develops a network strategy, and proposes a high-level architecture
Plan	Identifies the network requirements by characterizing and assessing the network, performing a gap analysis
Design	Provides high availability, reliability, security, scalability, and performance
Implement	Installation and configuration of new equipment
Operate	Day-to-day network operations
Optimize	Proactive network management; modifications to the design

Prepare Phase The Prepare phase establishes organization and business requirements, develops a network strategy, and proposes a high-level conceptual architecture to support the strategy. Technologies that support the architecture are identified. This phase creates a business case to establish a financial justification for a network strategy.

#### QUESTION 11

A campus network needs end-to-end QoS tools to manage traffic and ensure voice quality. Which three types of QoS tools are needed? (Choose three.)

A. interface queuing and scheduling

B. congestion management

C. compression and fragmentation

D. bandwidth provisioning

E. traffic classification

F. buffer management

Correct Answer: ADE

#### QUESTION 12

Which two statements best describe an OSPF deployment? (Choose two.)

- A. ABR provides automatic classful network boundary summarization.
- B. ABR requires manual configuration for classful network summarization.
- C. External routes are propagated into the autonomous system from stub areas via ASBR.
- D. External routes are propagated into the autonomous system from regular areas or NSSA via ASBR.
- E. External routes are propagated into the autonomous system from regular areas or NSSA via ABR.

Correct Answer: BD

[Latest 640-864 Dumps](#)

[640-864 VCE Dumps](#)

[640-864 Practice Test](#)



To Read the [Whole Q&As](#), please purchase the [Complete Version](#) from [Our website](#).

## Try our product !

100% Guaranteed Success

100% Money Back Guarantee

365 Days Free Update

Instant Download After Purchase

24x7 Customer Support

Average 99.9% Success Rate

More than 800,000 Satisfied Customers Worldwide

Multi-Platform capabilities - [Windows](#), [Mac](#), [Android](#), [iPhone](#), [iPod](#), [iPad](#), [Kindle](#)

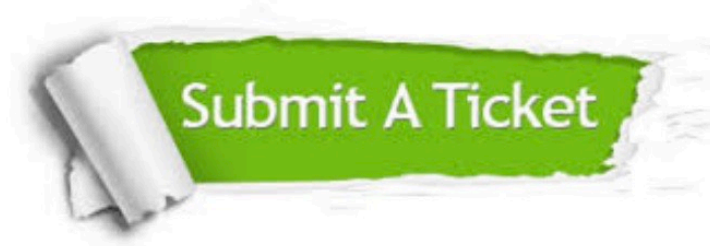
We provide exam PDF and VCE of Cisco, Microsoft, IBM, CompTIA, Oracle and other IT Certifications. You can view Vendor list of All Certification Exams offered:

<https://www.certbus.com/allproducts>

## Need Help

Please provide as much detail as possible so we can best assist you.

To update a previously submitted ticket:



 <p><b>One Year Free Update</b> Free update is available within One Year after your purchase. After One Year, you will get 50% discounts for updating. And we are proud to boast a 24/7 efficient Customer Support system via Email.</p>	 <p><b>Money Back Guarantee</b> To ensure that you are spending on quality products, we provide 100% money back guarantee for 30 days from the date of purchase.</p>	 <p><b>Security &amp; Privacy</b> We respect customer privacy. We use McAfee's security service to provide you with utmost security for your personal information &amp; peace of mind.</p>
---	---	--

Any charges made through this site will appear as Global Simulators Limited.

All trademarks are the property of their respective owners.

Copyright © certbus, All Rights Reserved.