

640-722^{Q&As}

Implementing Cisco Unified Wireless Networking Essentials v2.0

Pass Cisco 640-722 Exam with 100% Guarantee

Free Download Real Questions & Answers **PDF** and **VCE** file from:

<https://www.certbus.com/640-722.html>

100% Passing Guarantee
100% Money Back Assurance

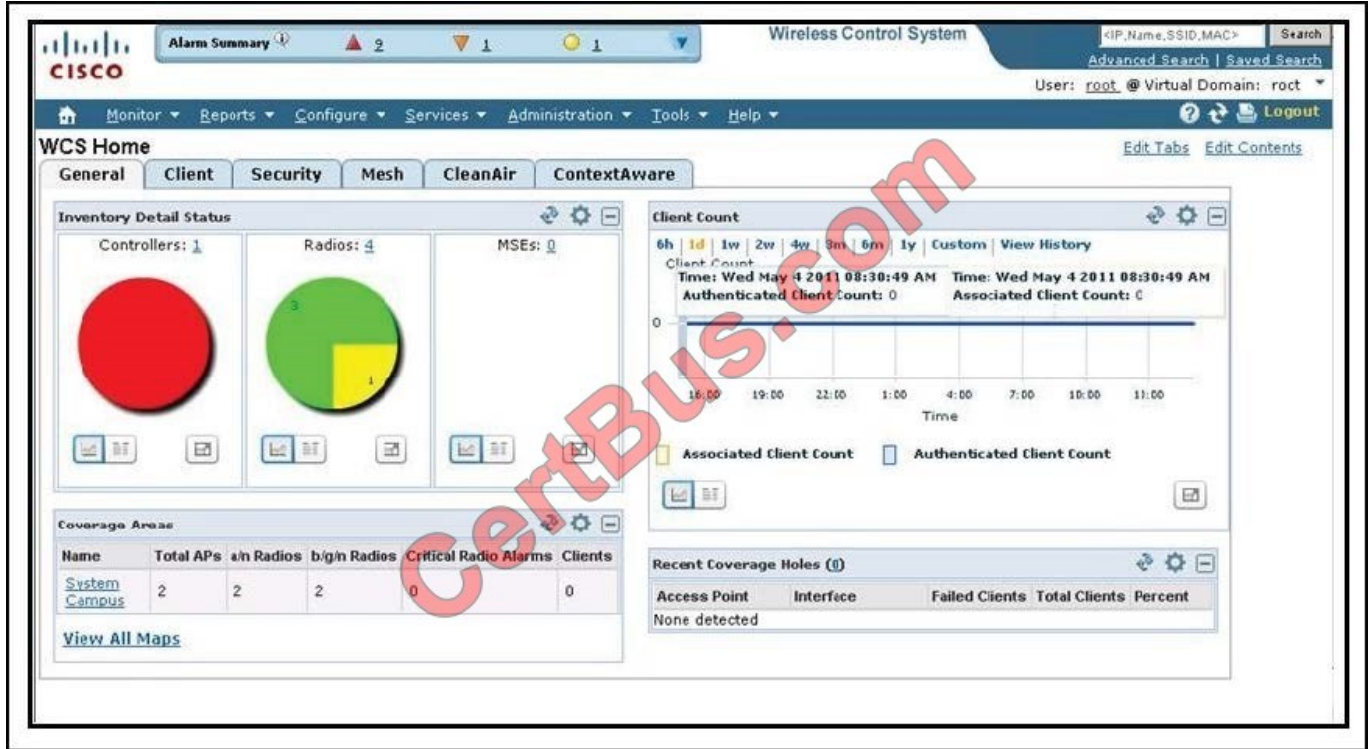
Following Questions and Answers are all new published by Cisco
Official Exam Center

- ⚙️ **Instant Download** After Purchase
- ⚙️ **100% Money Back** Guarantee
- ⚙️ **365 Days** Free Update
- ⚙️ **800,000+** Satisfied Customers



QUESTION 1

Refer to the exhibit.



Which menu gives you access to manage background tasks in Cisco WCS?

- A. None, because the General tab provides access to the management of background tasks
- B. Monitor
- C. Configure
- D. Services
- E. Administration
- F. Tools

Correct Answer: E

The Administration menu enables you to schedule tasks like making a backup, checking a device status, auditing your network, synchronizing the MSE, and so on. It also contains Logging to enable various logging modules and specify restart requirements. For user administration such as changing passwords, establishing groups, setting application security settings, and so on, choose AAA. From the Administration Menu, you can also access the licensing information, set user preferences, and establish high availability (a secondary backup device running WCS).

Reference:

http://www.cisco.com/c/en/us/td/docs/wireless/wcs/7-0/configuration/guide/WCS70cg/7_0wst.html#wp1060607

QUESTION 2

How are application-specific devices differentiated from laptop computers in the way they support Cisco Compatible Extensions?

- A. ASDs are required to support only Cisco Compatible Extensions v1 and v2 features. Laptops must support all Cisco Compatible Extensions features.
- B. ASDs are required to support only Cisco Compatible Extensions v5 management features, while laptops are required to support optional features.
- C. Several features that are required for laptops are not required for ASDs.
- D. There is no differentiation. ASDs and laptops must both support the same Cisco Compatible Extensions features.

Correct Answer: C

In each version of CCX some features are classified as optional for ASDs. Examples of ASDs are medical devices, mobile computers, smartphones, and printers. The CCX specification for ASDs is a subset of the CCX specification for laptops. Some CCX features are not required for ASDs because many ASDs lack the computing power or operating system foundation required to support the features.

Reference:

http://incenter.medical.philips.com/doclib/enc/fetch/2000/4504/577242/577243/577246/581601/711562/The_Value_of_CCX_for_Philips_PageWriter_Cardiographs.pdf%3fnodeid%3d5784998%26vernum%3d1

QUESTION 3

Which two algorithms are available in RRM? (Choose two.)

- A. coverage-hole detection
- B. dynamic channel assignment
- C. RSSI normalizer
- D. transmitting channel expander
- E. rogue detection

Correct Answer: AB

Here is how Cisco RRM works from a high level:

Wireless LAN Controllers (WLCs) are provisioned with a consistent RF Group Name. This is an ASCII name to identify those WLCs and APs that are all part of the same wireless system.

APs periodically send out RRM Neighbor Messages to each other that are passed up to the Wireless LAN controllers as well. These messages are authenticated for security purposes and provide the controllers with a complete picture of all of the devices in the RF Group. From these devices an RF Group Leader is elected.

Note that these RRM Neighbor Messages play a critical role in other Cisco Unified Wireless Network capabilities such as Over-the-Air Provisioning (OTAP) and Rogue AP Classification.

Once the RF Group is understood, a series of algorithms are run to optimize AP configurations in the RF Group. It is the RF Group Leader that is responsible for these periodic math assignments. (This sounds like a great job for our own Petr Lapukhov!) You should also note that RRM with its RF Grouping is separate and distinct from Mobility Grouping.

What are the algorithms that the RF Group Leader will be busy with?

Dynamic Channel Assignment Algorithm using metrics of load measurements, noise, interference, signal strength

Transmit Power Control Algorithm

Coverage Hole Detection and Correction Algorithm

Reference: <http://blog.ine.com/2010/10/08/cisco-radio-resource-management-rrm/>

QUESTION 4

Which governing body analyzes the applications and environments in which wireless networks are used?

- A. EIRP
- B. ETSI
- C. FCC
- D. IEEE
- E. WiFi Alliance

Correct Answer: D

Hence the various wireless standards prefixed with IEEE. Wireless LANs are described in IEEE 802.11 standard that contains 802.11a, 802.11b, 802.11g, 802.11n, 802.11ac and so forth.

QUESTION 5

Which wireless client attempts to authenticate by using 802.1X?

- A. supplicant
- B. authenticator
- C. EAP
- D. RADIUS

Correct Answer: A

802.1x is an Institute of Electrical and Electronics Engineers (IEEE) standard that provides an authentication framework for WLANs. 802.1x uses the Extensible Authentication Protocol (EAP) to exchange messages during the authentication

process. The authentication protocols that operate inside the 802.1x framework that are suitable for wireless networks include EAP-Transport Layer Security (EAP-TLS), Protected EAP (PEAP), and EAP-Tunneled TLS (EAP-TTLS). These

protocols allow the network to authenticate the client while also allowing the client to authenticate the network.

802.1x authentication consists of three components:

The supplicant, or client, is the device attempting to gain access to the network. You can configure the Arubauser-centric network to support 802.1x authentication for wired users as well as wireless users.

The authenticator is the gatekeeper to the network and permits or denies access to the supplicants.

The Arubacontroller acts as the authenticator, relaying information between the authentication server and supplicant. The EAP type must be consistent between the authentication server and supplicant and is transparent to the controller.

Reference: http://www.arubanetworks.com/techdocs/ArubaOS_60/UserGuide/802.1x.php

QUESTION 6

Which two Cisco WLC management-access methods are available as the default setting? (Choose two.)

- A. SSH
- B. HTTPS
- C. Telnet
- D. HTTP

Correct Answer: AB

The less secure methods of telnet and SSH are disabled by default and need to be manually configured. Only SSH and HTTPS are enabled by default.

QUESTION 7

What is Cisco WCS Navigator?

- A. a single point of management for multiple Cisco WCS servers
- B. a server for storing and reviewing Cisco Spectrum Expert station data
- C. a server for storing the location data of wireless clients
- D. a GUI for displaying the data of Cisco CleanAir APs, aligned with an uploaded map
- E. a single point of management for multiple Cisco WLC systems

Correct Answer: A

The Cisco WCS Navigator centralizes the operational control and management of multiple Cisco WCS management platforms. This easy-to-use platform delivers the following cross-system capabilities:

Network monitoring

Aggregated alarm notifications

Automated browser redirect

Simplified setup and configuration

Quick and advanced searches

Location tracking of client, Wi-Fi, and rogue devices Inventory reports

Secure administrative access

Reference: <http://www.cisco.com/c/en/us/products/wireless/wireless-control-system-navigator/index.html>

QUESTION 8

A controller is connected to a Cisco Catalyst switch. The switch port configuration looks like this:

```
interface GigabitEthernet 1/0/10 switchport switchport trunk encapsulation dot1q switchport trunk allowed vlan 1,20,30,50 switchport trunk native vlan 20 switchport mode trunk
```

Which controller CLI command assigns its management interface to the native VLAN interface of the Cisco Catalyst switch?

- A. config interface vlan management 0
- B. config interface vlan management 1
- C. config interface vlan management 20
- D. config interface vlan management 30
- E. config interface vlan management 50

Correct Answer: A

Since the controller management interface is connected to the native vlan interface of the Cisco Catalyst switch, the correct command is: config interface vlan management vlan-id 0

Reference: <http://www.cisco.com/en/US/docs/wireless/controller/5.0/configuration/guide/c5mint.html#wp1182892>

QUESTION 9

Which CAPWAP AP management-access method is available as the default setting?

- A. only the console port
- B. the console port and SSH
- C. the console port, SSH, and HTTPS
- D. SSH only

Correct Answer: A

After an access point joins the controller, the access point enables console port security only, and you are prompted for your username and password whenever you log into the access point's console port. When you log in, you are in non-privileged mode, and you must enter the enable password in order to use the privileged mode.

Reference:

<http://www.cisco.com/c/en/us/td/docs/wireless/controller/5-2/configuration/guide/Controller52CG/c52lwap.pdf>

QUESTION 10

Which four options are the characteristics of the original 802.11 protocol? (Choose four.)

- A. Defined DSSS and FHSS as possible methods for modulation
- B. Designed to operate in the 5 GHz ISM frequency spectrum
- C. The most common deployment is three non-overlapping channels that are 20 MHz wide
- D. The protocol sets the maximum throughput at 1 Mb/s or 2 Mb/s
- E. Defined FHSS and OFDM as possible methods for modulation
- F. The most common deployment is three non-overlapping channels that are 22 MHz wide
- G. Designed to operate in the 2.4 GHz ISM frequency spectrum
- H. The protocol sets the maximum throughput at 1 Mb/s

Correct Answer: ADGF

FHSS is still described in the original 802.11 protocol, but another technique was preferred and adopted by all 802.11 networks: Direct Sequence Spread Spectrum. Instead of small channels and a jumping sequence, the information is sent over a wider channel. This channel is 22 MHz wide (if the center frequency is 2.412, this channel spans from 2.401 GHz to 2.423 GHz) and does not move (no hopping, which is why the sequence is said to be direct instead of hopping). Then, over this 22 MHz channel, several bits of information are sent in parallel. If a source of interference affects part of the channel, it will prevent only the bits sent in that frequency from reaching the receiver.

QUESTION 11

DRAG DROP Cisco WLCs running version 7.0 can be enabled for CleanAir functionality by using an AQI rating from 1 to 100. Event-driven RRM can take immediate action on AQI levels based on three sensitivity thresholds (Low, Medium, High), which are configurable in the web-based GUI. The network administrator must understand what AQI value is set using these sensitivity thresholds in version 7.0. Drag the AQI values on the left and drop them on the threshold name they belong to on the right.

Select and Place:

20	Low
35	Medium
40	High
45	
50	
60	
70	

Correct Answer:

20	35
	50
40	60
45	
70	

QUESTION 12

The network administrator has used VLANs to separate VoIP frames from data frames in the wired network. What must the administrator use to separate those frames in the wireless network?

- A. multiple SSIDs
- B. multiple authentications
- C. multiple WEP or WPA keys
- D. multiple channels
- E. multiple 802.11 radios (a, b, g, n)

Correct Answer: A

Multiple IEEE 802.11 service set identifiers (SSIDs) allow you to create different levels of network access and to access virtual LANs (VLANs). You can configure up to 16 separate SSIDs to support up to 16 VLANs. Each VLAN can have a

different wireless security configuration so that the devices that support the latest Cisco security enhancements can exist alongside legacy devices. This additional access point functionality enables a variety of users having different security levels to access different parts of the network.

Reference: http://www.cisco.com/en/US/docs/wireless/access_point/350/configuration/guide/ap350ch1_ps458_TSD_Products_Configuration_Guide_Chapter.html

[640-722 VCE Dumps](#)

[640-722 Practice Test](#)

[640-722 Study Guide](#)

To Read the [Whole Q&As](#), please purchase the [Complete Version](#) from [Our website](#).

Try our product !

100% Guaranteed Success

100% Money Back Guarantee

365 Days Free Update

Instant Download After Purchase

24x7 Customer Support

Average 99.9% Success Rate

More than 800,000 Satisfied Customers Worldwide

Multi-Platform capabilities - [Windows](#), [Mac](#), [Android](#), [iPhone](#), [iPod](#), [iPad](#), [Kindle](#)

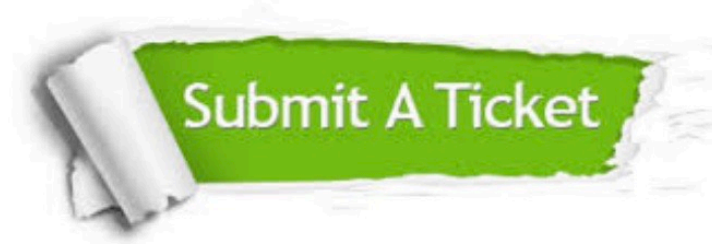
We provide exam PDF and VCE of Cisco, Microsoft, IBM, CompTIA, Oracle and other IT Certifications. You can view Vendor list of All Certification Exams offered:


<https://www.certbus.com/allproducts>

Need Help

Please provide as much detail as possible so we can best assist you.

To update a previously submitted ticket:



 <p>One Year Free Update Free update is available within One Year after your purchase. After One Year, you will get 50% discounts for updating. And we are proud to boast a 24/7 efficient Customer Support system via Email.</p>	 <p>Money Back Guarantee To ensure that you are spending on quality products, we provide 100% money back guarantee for 30 days from the date of purchase.</p>	 <p>Security & Privacy We respect customer privacy. We use McAfee's security service to provide you with utmost security for your personal information & peace of mind.</p>
---	---	--

Any charges made through this site will appear as Global Simulators Limited.

All trademarks are the property of their respective owners.

Copyright © certbus, All Rights Reserved.