

## 600-660<sup>Q&As</sup>

Implementing Cisco Application Centric Infrastructure - Advanced

### Pass Cisco 600-660 Exam with 100% Guarantee

Free Download Real Questions & Answers **PDF** and **VCE** file from:

<https://www.certbus.com/600-660.html>

100% Passing Guarantee  
100% Money Back Assurance

Following Questions and Answers are all new published by Cisco  
Official Exam Center

- ⚙️ **Instant Download** After Purchase
- ⚙️ **100% Money Back** Guarantee
- ⚙️ **365 Days** Free Update
- ⚙️ **800,000+** Satisfied Customers



**QUESTION 1**

An engineer configures a new Cisco ACI Multi-Pod and must set up the link between the spine and the IPN device. Which three actions should be taken to accomplish this goal? (Choose three.)

- A. Enable MP-BGP routing
- B. Enable BIDIR-PIM protocol
- C. Enable PIM-SM protocol
- D. Enable OSPF routing
- E. Enable IS-IS routing
- F. Enable DHCP relay

Correct Answer: ABF

**QUESTION 2**

DRAG DROP

Drag and drop the tenant implementation designs from the left onto the outcomes of the design when a greenfield Cisco ACI fabric is deployed on the right.

Select and Place:

**Answer Area**

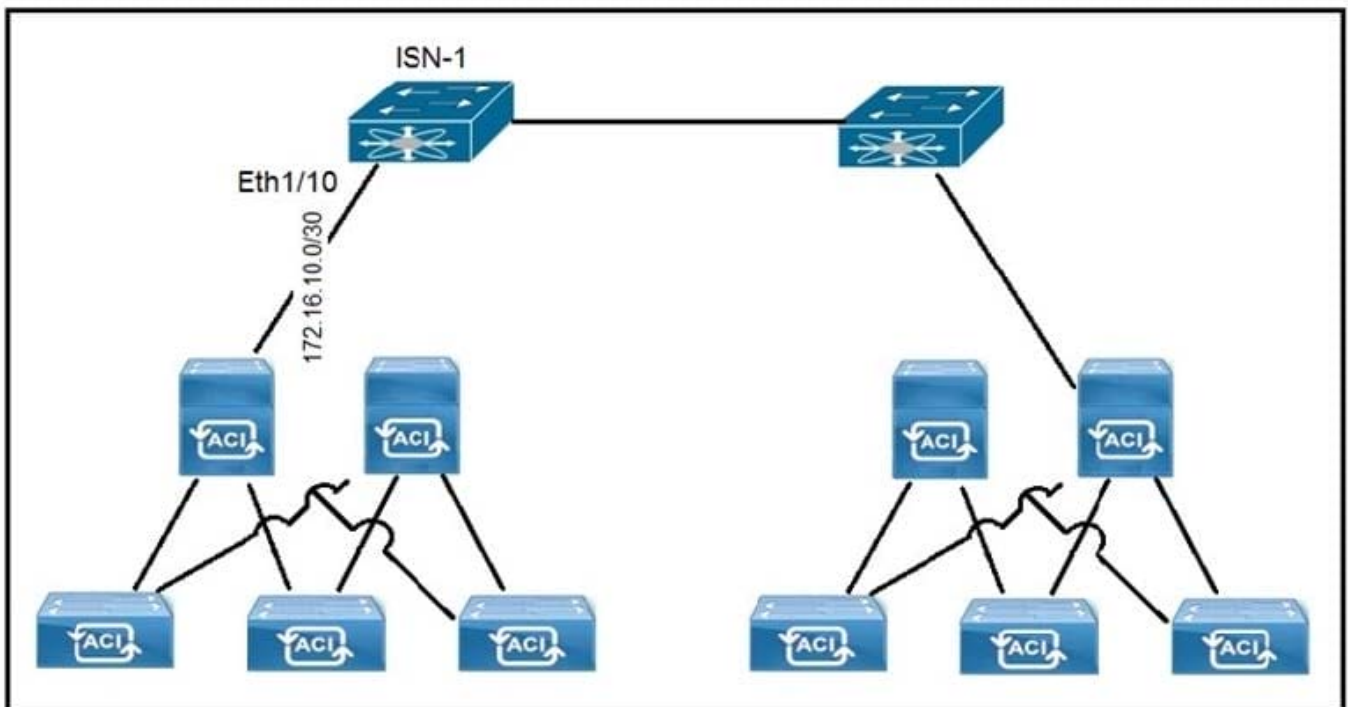
VRF configured in common tenant; BDs and EPGs configured in dedicated tenants.	One organization without RBAC requirements owns all of the configuration.
VRF and BDs configured in common tenant; EPGs configured in user tenants.	Different organizations can have overlapping subnets.
VRF, BD, and EPG configured in common tenant.	Organizations use different tenants and share the same subnets.
VRF, BD, and EPG configured in user tenants.	Each organization has access only to dedicated resources, tied into RBAC rules.

Correct Answer:

**Answer Area**

- VRF, BD, and EPG configured in user tenants.
- VRF, BD, and EPG configured in common tenant.
- VRF configured in common tenant; BDs and EPGs configured in dedicated tenants.
- VRF and BDs configured in common tenant; EPGs configured in user tenants.

**QUESTION 3**



Refer to the exhibit. A customer implements Cisco ACI Multi-Site with default MTU settings between two sites. Which configuration should be applied on the interface Eth1/10 on the ISN-1 device?

- A.
- B.

C.

D.

Correct Answer: A

---

#### QUESTION 4

Which action should be taken in Cisco ACI to reassign a unique globally scoped pcTag to an EPG that provides a global contract?

A. Configure subnets that are treated as virtual IP

B. Configure subnets that advertise externally

C. Configure subnets that are shared between VRFs

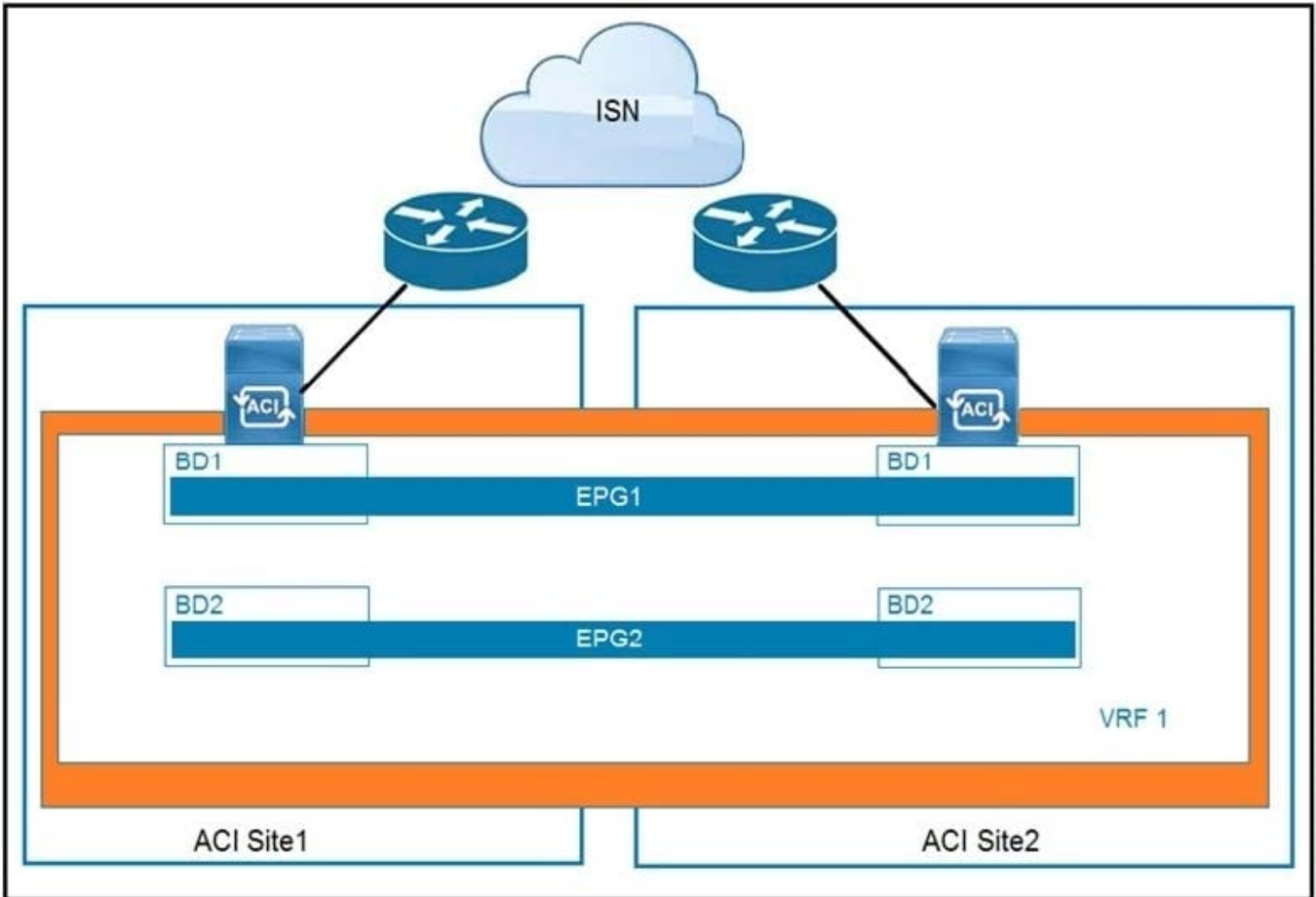
D. Configure subnets that are private to VRF

Correct Answer: C

Reference: <https://www.cisco.com/c/en/us/support/docs/cloud-systems-management/application-policy-infrastructure-controller-apic/119023-technote-apic-00.html>

---

#### QUESTION 5



Refer to the exhibit. Which feature is available across sites if EPGs are stretched?

- A. active-active high-availability firewall clustering
- B. Layer 3 routing between sites
- C. Layer 2 flooding across sites
- D. live virtual machine migration

Correct Answer: B

Reference: [https://www.cisco.com/c/en/us/td/docs/switches/datacenter/aci/aci\\_multi-site/sw/1x/fundamentals/b\\_Cisco\\_ACI\\_Multi-Site\\_Fundamentals/b\\_ACI\\_Multi-Zone\\_Fundamentals\\_chapter\\_01.pdf](https://www.cisco.com/c/en/us/td/docs/switches/datacenter/aci/aci_multi-site/sw/1x/fundamentals/b_Cisco_ACI_Multi-Site_Fundamentals/b_ACI_Multi-Zone_Fundamentals_chapter_01.pdf) (6)

## QUESTION 6

### Create L4-L7 Devices

STEP 1 > Cluster

1. Cluster 2. Devices 3. Parameters

Name:

Device Package:

Context Aware:  Multiple  Single

Function Type:  GoThrough  GoTo  L1  L2

Device Type:  CLOUD  PHYSICAL  VIRTUAL

Cluster Management Interface

EPG:

Virtual IP Address:

Port:

Username:

Password:

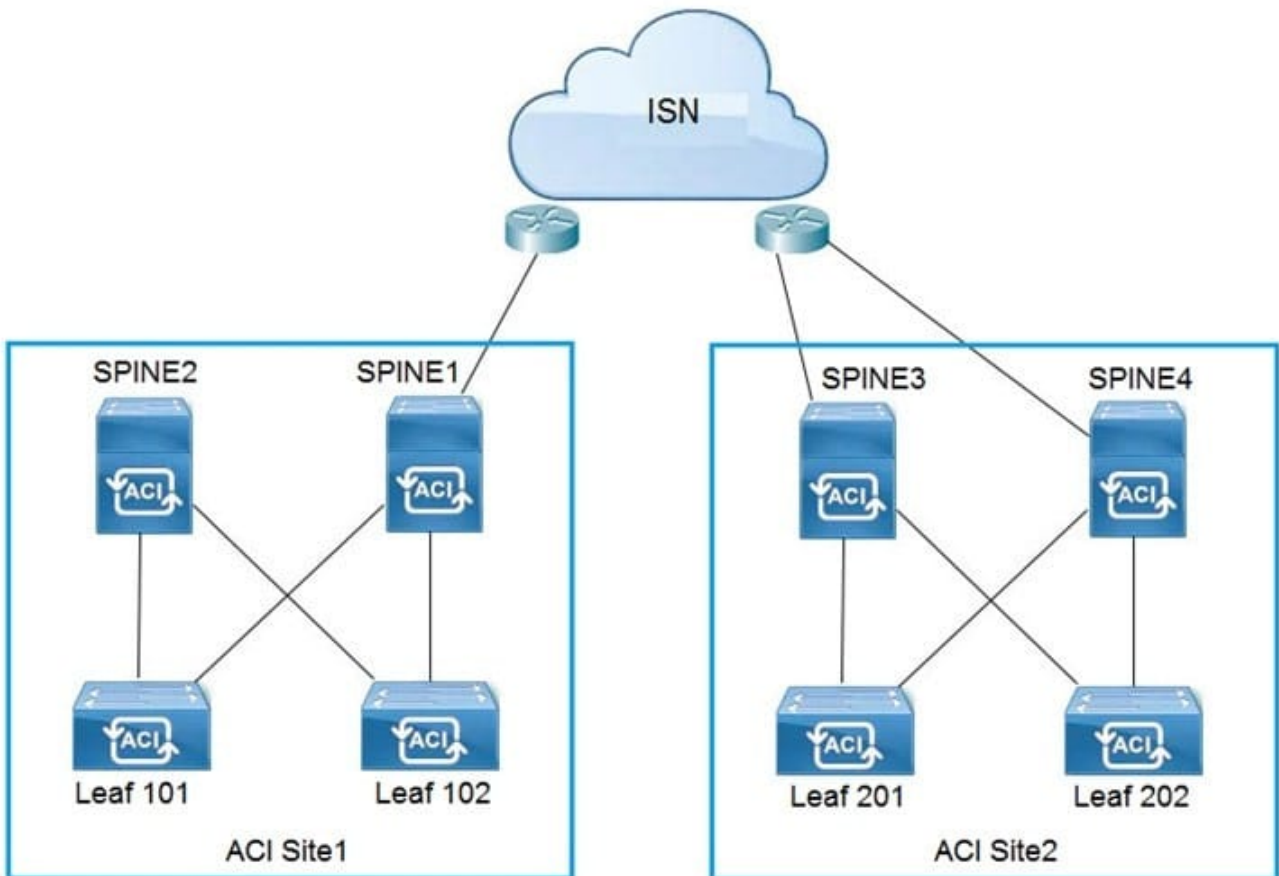
Confirm Password:

Refer to the exhibit. A network engineer configures a Layer 4 to Layer 7 device for an outside routed firewall that is connected to POD-1 inside a Cisco ACI fabric that consists of two pods. All traffic from POD-1 or POD-2 that uses the L3Out should pass through the routed firewall. Which Function Type must be implemented in the service graph for POD-2 to use L3Out?

- A. GoThrough
- B. L1
- C. GoTo
- D. L2

Correct Answer: D

#### QUESTION 7



Refer to the exhibit. Which two configuration steps are required in ISN for Cisco ACI Multi-Site setup? (Choose two.)

- A. Connect Spine2 to ISN routers.
- B. Configure BIDIR-PIM throughout the ISN
- C. Increase ISN MTU to support the maximum MTU that is sent by endpoints
- D. Configure OSPF between spines and ISN routers
- E. Enable IGMPv3 on ISN routers

Correct Answer: DE

**QUESTION 8**

An engineer must limit local and remote endpoint learning to the bridge domain subnet. Which action should be taken inside the Cisco APIC?

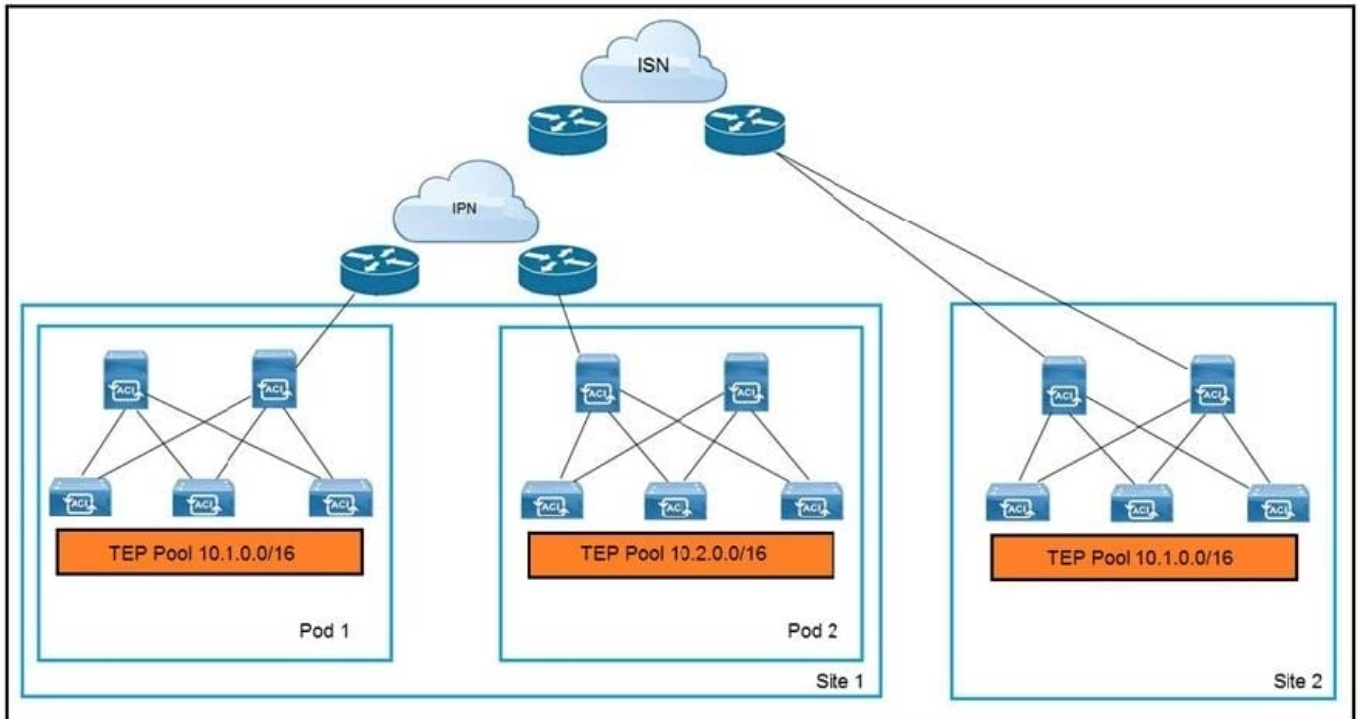
- A. Disable Remote EP Learn
- B. Enable Enforce Subnet Check
- C. Disable Endpoint Dataplane Learning

D. Enable Limit IP Learning to Subnet

Correct Answer: B

Reference: <https://www.cisco.com/c/en/us/solutions/collateral/data-center-virtualization/application-centric-infrastructure/white-paper-c11-739989.html>

**QUESTION 9**



Refer to the exhibit. An engineer extends a Cisco ACI Multi-Pod setup to a Cisco ACI Multi-Site implementation. Which action allows the interconnection?

- A. Configure BIDIR-PIM in the IPN and ISN
- B. Use dedicated uplinks on Site 1 spines for ISN connections
- C. Connect all spines to the IPN and ISN
- D. Filter the advertisement of the Site 2 TEP pool into the IPN

Correct Answer: A

**QUESTION 10**

What is a design implication for Cisco ACI using an application-centric approach?

- A. Multiple VLANs and/or multiple EPGs are under one bridge domain
- B. VLAN numbers are in the names of the bridge domain and EPG objects



- C. One EPG is mapped to multiple bridge domains
- D. One VLAN equals one EPG equals one bridge domain

Correct Answer: C

[600-660 PDF Dumps](#)

[600-660 Practice Test](#)

[600-660 Braindumps](#)