

4A0-103^{Q&As}

Alcatel-Lucent Multiprotocol Label Switching

Pass Alcatel-Lucent 4A0-103 Exam with 100% Guarantee

Free Download Real Questions & Answers **PDF** and **VCE** file from:

<https://www.certbus.com/4a0-103.html>

100% Passing Guarantee
100% Money Back Assurance

Following Questions and Answers are all new published by Alcatel-Lucent Official Exam Center

- ⚙️ **Instant Download** After Purchase
- ⚙️ **100% Money Back** Guarantee
- ⚙️ **365 Days** Free Update
- ⚙️ **800,000+** Satisfied Customers



QUESTION 1

Which of the following is NOT required when configuring an LSP with an admin group constraint on an Alcatel-Lucent 7750 SR?

- A. Enable traffic engineering on all routers along the LSP path.
- B. Enable CSPF on the head-end router.
- C. Configure a path definition on all routers along the LSP path.
- D. Enable MPLS and RSVP on all routers along the LSP path.

Correct Answer: C

QUESTION 2

If an LSP needs to use an admin group, which of the following configurations is NOT required on the Alcatel-Lucent 7750 SR?

- A. Assign an admin group to a MPLS interface.
- B. Configure CSPF on the LSP.
- C. Configure at least one strict hop on the LSP path.
- D. Configure an "include" or "exclude" statement on the LSP path.

Correct Answer: C

QUESTION 3

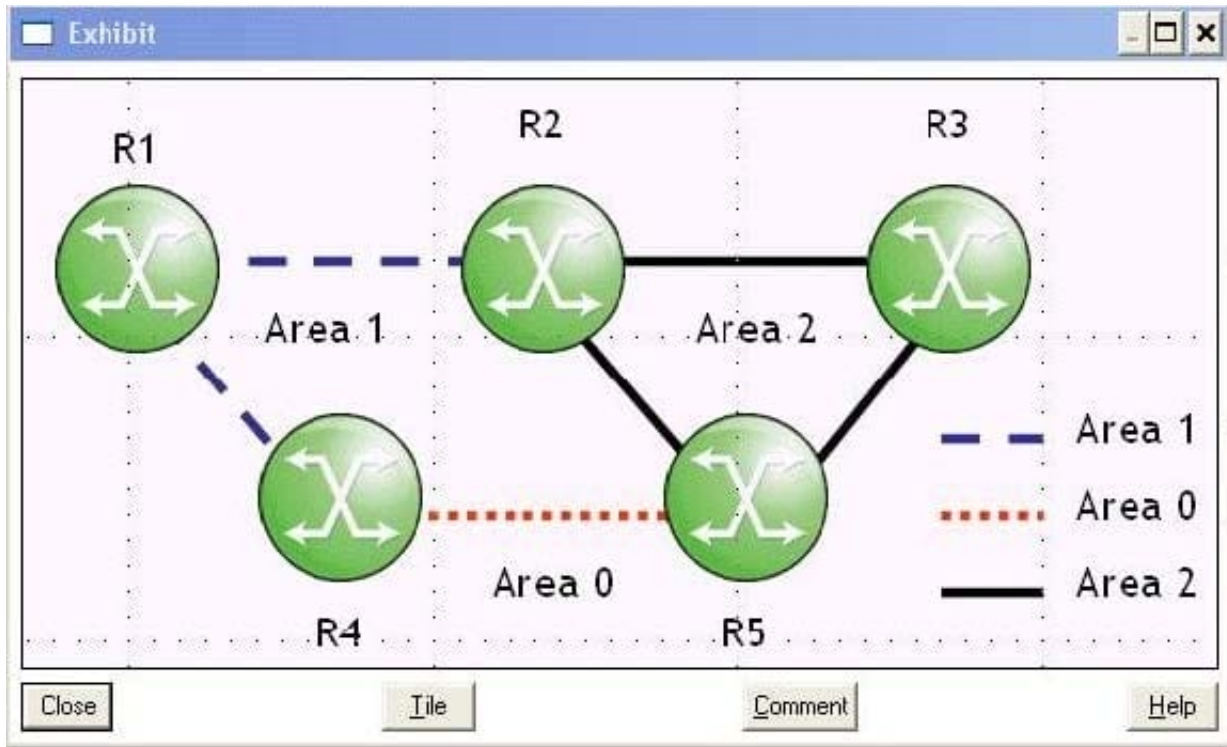
Which of the following devices receives labeled packets from the MPLS domain, removes the MPLS header, and forwards unlabeled packets outside the MPLS domain?

- A. P router
- B. LSR
- C. eLER
- D. iLER

Correct Answer: C

QUESTION 4

Click on the exhibit button below. Assume the following:



-Each router's OSPF interfaces are in the areas shown.

-Bidirectional LDP-over-RSVP tunnels extend from routers R1 to R3 and back over the path R1-R4-R5-R3.

-You enable fast reroute facility bypass on the R5-R3 RSVP LSP.

-Router R5 acts as a PLR, protecting the R5-R3 link by building a bypass tunnel through router R2.

You build a layer 2 VPN on routers R1 and R3, using the LDP-over-RSVP tunnels. What MPLS configuration step must you complete on router R2 for it to protect the end-to-end service?

- A. Enable LDP on the R2-R5 interface.
- B. Configure T-LDP sessions between routers R2 and R5 and R3.
- C. Configure LDP-over-RSVP support on router R2.
- D. Enable MPLS and RSVP on the router R2 network interfaces.
- E. Enable LDP on the R2-R5 and R2-R3 interfaces.

Correct Answer: D

QUESTION 5

Which of the following LDP messages are used in the successful establishment of LDP sessions? Choose three answers

- A. Label request message

- B. Notification message
- C. Address message
- D. Keepalive message
- E. Initialization message
- F. Hello message

Correct Answer: DEF

QUESTION 6

Click on the exhibit.

```

Actual Hops :
  10.1.3.1(10.10.10.1) @ n           Record Label   : N/A
-> 10.1.3.3(10.10.10.3) @ n       Record Label   : 131069
-> 10.3.4.4(10.10.10.4) @         Record Label   : 131069
-> 10.2.4.2(10.10.10.2)           Record Label   : 131067
-> 10.2.6.6(10.10.10.6)           Record Label   : 131071
ComputedHops:
  10.1.3.1(S)           -> 10.1.3.3(S)           -> 10.3.4.4(S)
-> 10.2.4.2(S)         -> 10.2.6.6(S)
  
```

The partial command output from an Alcatel-Lucent 7750 SR is shown. Which of the following about this LSP path is TRUE?

- A. R4 (10.10.10.4) has established a link protection tunnel.
- B. R6 (10.10.10.6) has established a link protection tunnel.
- C. R2 (10.10.10.2) has established a node protection tunnel.
- D. R1 (10.10.10.1) has not established a node protection tunnel.

Correct Answer: A

QUESTION 7

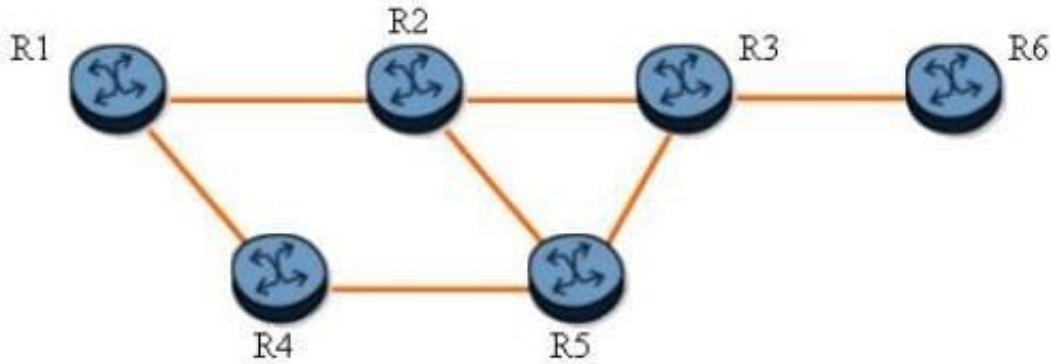
Which of the following regarding MPLS Encapsulation is FALSE?

- A. The customer's Layer 2 header is preserved at the iLER for Layer 2 services.
- B. The customer's Layer 2 Header is preserved at the iLER for Layer 3 services.
- C. The service provider's Layer 2 header is added at the iLER for Layer 2 services.
- D. The service provider's Layer 2 header is added at the iLER for Layer 3 services.

Correct Answer: B

QUESTION 8

Click on the exhibit.



Assume that the packet in the original LSP already has two labels.

An LSP traverses R1-R2-R3-R6 and one-to-one fast reroute is enabled. If the protected LSP transports two labels, and router R2 has failed, how many labels will be on the detour path?

- A. 1
- B. 2
- C. 3
- D. 4

Correct Answer: B

QUESTION 9

Which MPLS label mode saves label mappings received from all peer LSRs?

- A. Conservative label retention
- B. Liberal label retention
- C. Downstream on demand
- D. Downstream unsolicited

Correct Answer: B

QUESTION 10

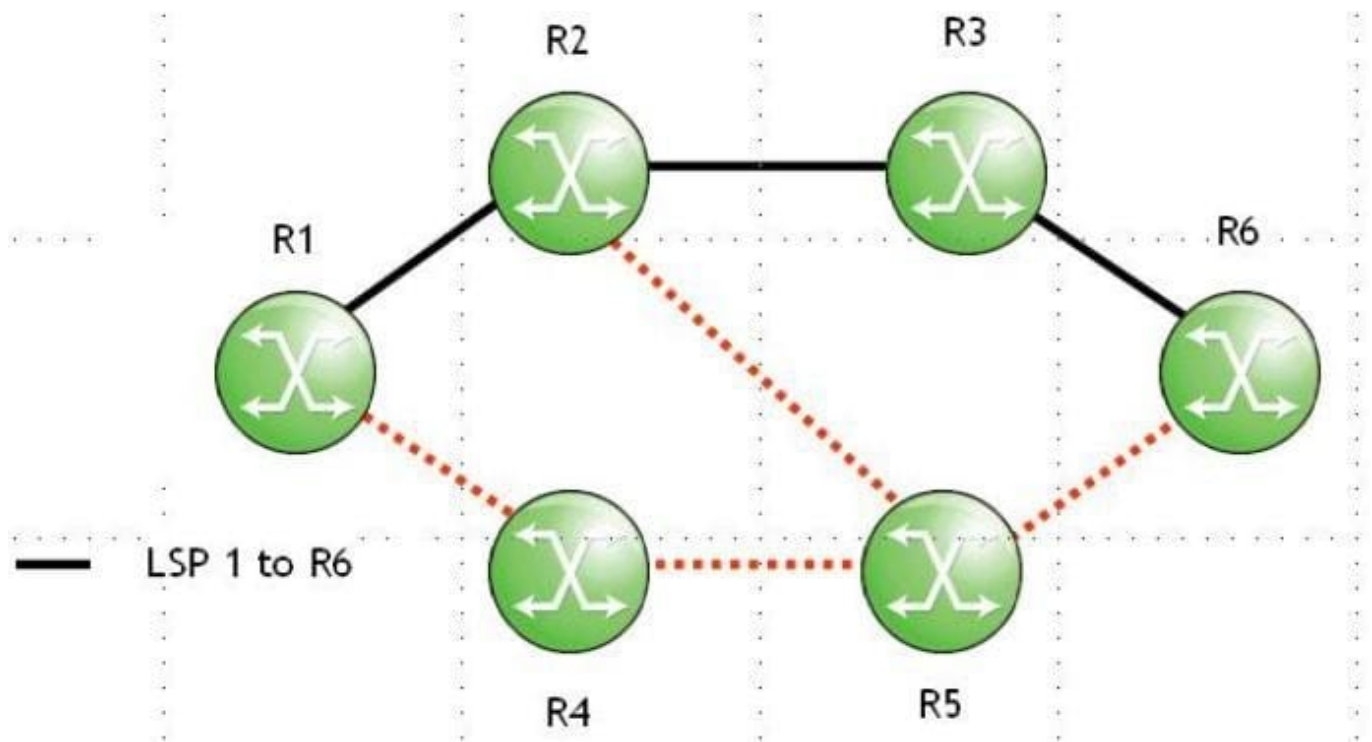
Which of the following regarding the location of an MPLS label is FALSE?

- A. The MPLS label value may be carried in an ATM header.
- B. The MPLS label value may be carried in a shim header.
- C. The MPLS label value may be carried in an OSPF header.
- D. The MPLS label value may be carried in a Frame Relay header.

Correct Answer: C

QUESTION 11

Click on the exhibit.



When router R1 forwards a PATH message to router R2, which of the following about the PATH message's IP header is TRUE?

- A. The options field is set to router alert.
- B. The source address is R1's egress interface address.
- C. The destination address is R2's ingress interface address.
- D. The HOP object includes R2's system address.

Correct Answer: A

QUESTION 12

Which of the following commands is used to display the database containing the OSPF-TE LSAs?

- A. show router ospf opaque-database
- B. show router ospf database
- C. show router ospf opaque-lsa
- D. show router ospf te opaque

Correct Answer: A

QUESTION 13

An Alcatel-Lucent 7750 SR has its TE update threshold enabled with the up threshold set to 40%. The maximum reservable bandwidth on the link is 200M and 30M have already been reserved. When will a TE update be sent on this link?

- A. When the reserved bandwidth goes above 80M.
- B. When the reserved bandwidth goes above 40M.
- C. When an additional 80M bandwidth is reserved.
- D. When an additional 40M bandwidth is reserved.

Correct Answer: A

QUESTION 14

What is the purpose of the MPLS TC field (EXP bits)?

- A. Each implementation can use it as they see fit.
- B. It is used to carry the Ether type value.
- C. It is used to carry the TTL value.
- D. It is used to carry QoS classification.
- E. It is used to carry fragmentation flag information.

Correct Answer: D

QUESTION 15

Click on the exhibit.

```
*A:SRC_R3# oam lsp-ping prefix 192.10.1.2/32
LSP-PING 192.10.1.2/32: 80 bytes MPLS payload
Seq=1, send from intf toR1, reply from 10.10.10.2
      udp-data-len=32 ttl=255 rtt=2.45ms rc=3 (EgressRtr)

---- LSP 192.10.1.2/32 PING Statistics ----
1 packets sent, 1 packets received, 0.00% packet loss
round-trip min = 2.45ms, avg = 2.45ms, max = 2.45ms, stddev = 0.000ms
*A:SRC_R3#
```

After the lsp-ping command is executed, which of the following best describe the router's action?

- A. MPLS Echo Request packets are sent unlabeled to the prefix 192.10.1.2.
- B. MPLS Echo Request packets are sent within the LDP tunnel that are signaled for 192.10.1.2.
- C. MPLS Echo Request packets are sent within the RSVP-TE tunnel that are signaled for 192.10.1.2.
- D. MPLS Echo Request packets are sent over TCP.

Correct Answer: B

[4A0-103 PDF Dumps](#)

[4A0-103 Study Guide](#)

[4A0-103 Exam Questions](#)