

4A0-102^{Q&As}

Alcatel-Lucent Border Gateway Protocol

Pass Alcatel-Lucent 4A0-102 Exam with 100% Guarantee

Free Download Real Questions & Answers **PDF** and **VCE** file from:

<https://www.certbus.com/4a0-102.html>

100% Passing Guarantee
100% Money Back Assurance

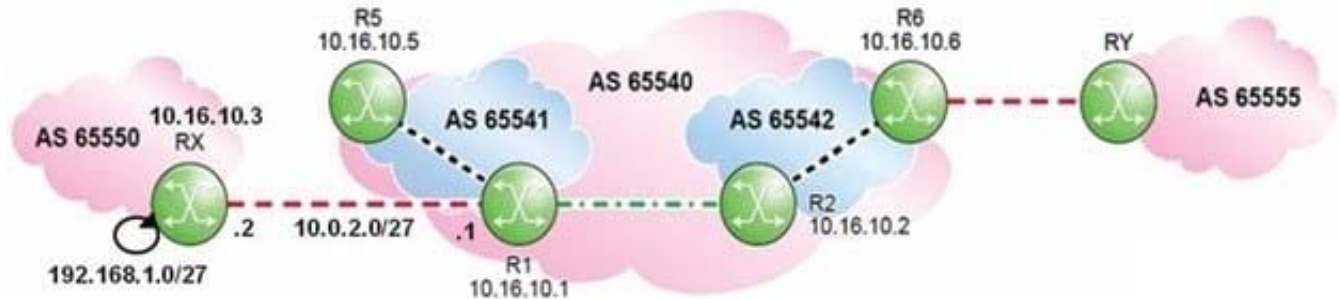
Following Questions and Answers are all new published by Alcatel-Lucent Official Exam Center

- ⚙️ **Instant Download** After Purchase
- ⚙️ **100% Money Back** Guarantee
- ⚙️ **365 Days** Free Update
- ⚙️ **800,000+** Satisfied Customers



QUESTION 1

Click the exhibit.



Given the following configuration for router R1, what is the expected Next Hop for prefix 192.168.1.0/27 as seen on router R2?

```
R1>config>router>bgp# info
```

```
-----
group "eBGP"
  peer-as 65550
  neighbor 10.0.2.2
  exit
exit
group "Conf_eBGP"
  peer-as 65542
  neighbor 10.16.10.2
  exit
exit
group "Member-AS"
  next-hop-self
  neighbor 10.16.10.5
  peer-as 65541
  exit
exit
no shutdown
```

- A. 10.0.2.1
- B. 10.0.2.2
- C. 10.16.10.1

D. 10.16.10.3

Correct Answer: B

QUESTION 2

An Alcatel-Lucent 7750 SR receives a route from an eBGP peer with a MED value of 500.

What MED value is sent to iBGP peers?

A. 100

B. The IGP cost

C. 500

D. None

Correct Answer: C

QUESTION 3

The user of an Alcatel-Lucent 7750 SR wants to see the effect of changing an import policy immediately. What is the best command to force re-evaluation of the import policy with minimal impact?

A. Configure router bgp shutdown

B. Clear router bgp neighbor soft

C. Clear router bgp neighbor soft-inbound

D. Clear router bgp protocol

Correct Answer: C

QUESTION 4

What kind of BGP attribute is the Local Preference?

A. Optional transitive attribute.

B. Optional non-transitive attribute.

C. Well-known mandatory attribute.

D. Well-known discretionary attribute.

Correct Answer: D

QUESTION 5

Which of the following is the minimum requirement for an AS to be considered multi-homed?

- A. A single connection to a single service provider.
- B. Two connections to a single service provider.
- C. Two connections to two different service providers.
- D. Multiple connections to different service providers.

Correct Answer: B

QUESTION 6

A router in AS 65100 receives two BGP routes. The first route is for 138.1.1.0/24 with an AS Path of 65200 65300, Local Preference of 100, MED of 100, and router ID 10.10.10.10. The second route is for 138.1.0.0/16 with an AS Path of 65500 65300, Local Preference of 150, MED of 100, and router ID

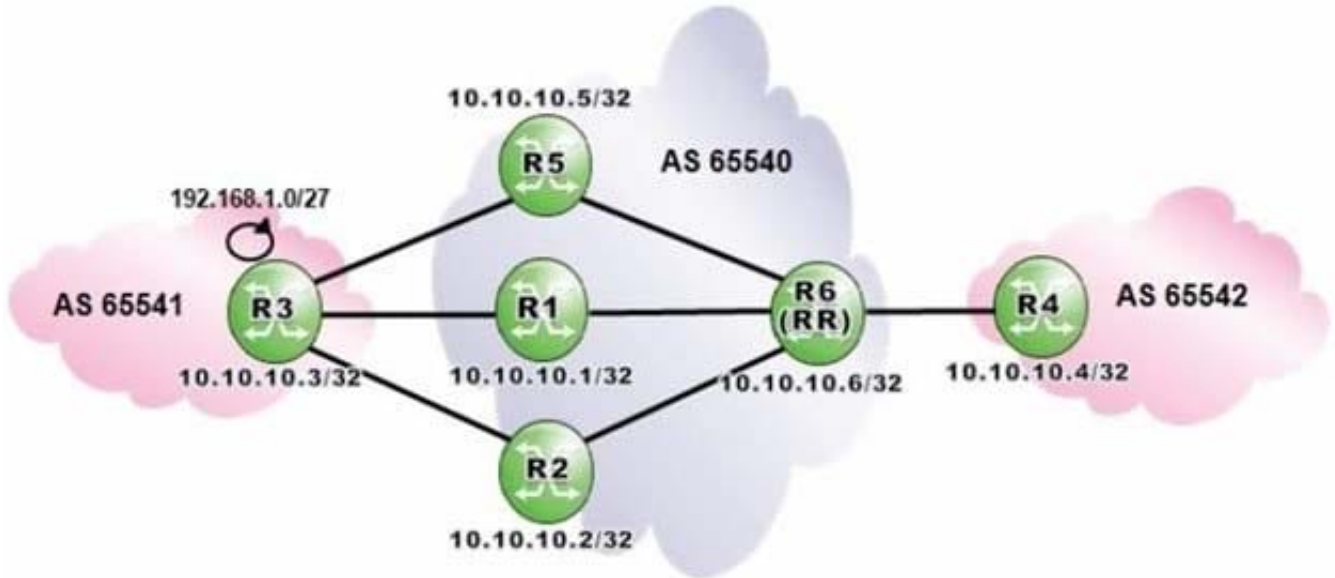
10.1.1.1. Assuming all other attributes are equal, which route would be used to forward an IP packet with destination IP address 138.1.1.1?

- A. The first BGP route.
- B. The second BGP route.
- C. Both routes are used.
- D. It is impossible to determine without the value of the origin code for both routes.

Correct Answer: A

QUESTION 7

Click the exhibit.



Router R6 is a route reflector with clients R1, R2 and R5. Router R3 advertises the prefix 192.168.1.0/27 to routers R1, R2 and R5. How many routes for prefix 192.168.1.0/27 will router R6 receive?

- A. 1
- B. 2
- C. 3
- D. None

Correct Answer: C

QUESTION 8

A confederated AS is comprised of three members. One member is comprised of 4 routers, while the other two members are comprised of 3 routers each. Assuming member ASs are fully meshed and use full mesh iBGP, what is the required number of BGP sessions within the confederation?

- A. 12
- B. 13
- C. 14
- D. 15

Correct Answer: D

QUESTION 9

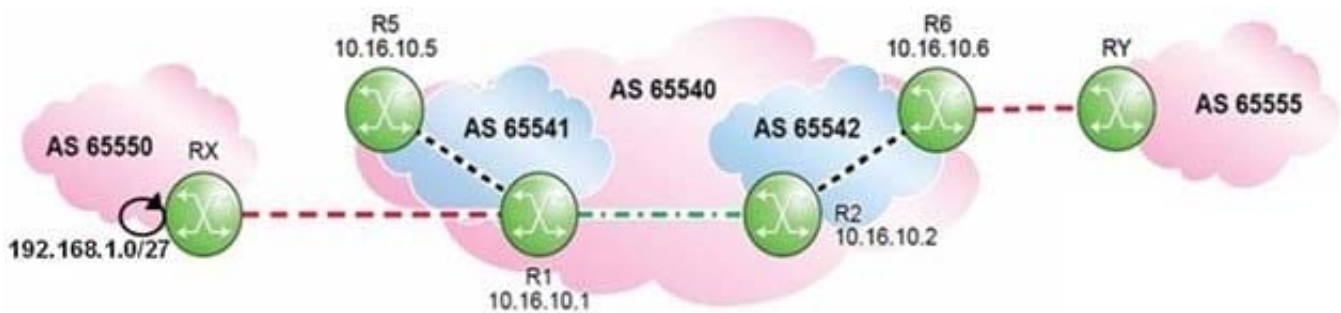
What class of attribute is Originator_ID?

- A. Well-known mandatory.
- B. Well-known discretionary.
- C. Optional transitive.
- D. Optional non-transitive.

Correct Answer: D

QUESTION 10

Click the exhibit.



Which of the following is a valid confederation configuration for Router R2?

- A. R2>config>router# info

autonomous-system 65540
confederation 65540 members 65541 65542
- B. R2>config>router# info

autonomous-system 65542
confederation 65540 members 65541
- C. R2>config>router# info

autonomous-system 65542
confederation 65540 members 65541 65542
- D. R2>config>router# info

autonomous-system 65540
confederation 65542 members 65541

A. Option A

B. Option B

C. Option C

D. Option D

Correct Answer: C

QUESTION 11

Which of the following statements regarding BGP Fast Reroute is FALSE?

- A. BGP Fast Reroute is triggered by IGP events.
- B. The backup path is pre-computed and installed in the FIB.
- C. BGP Fast Reroute is independent of number of affected prefixes.
- D. BGP Fast Reroute uses the optimal path to the destination.

Correct Answer: D

QUESTION 12

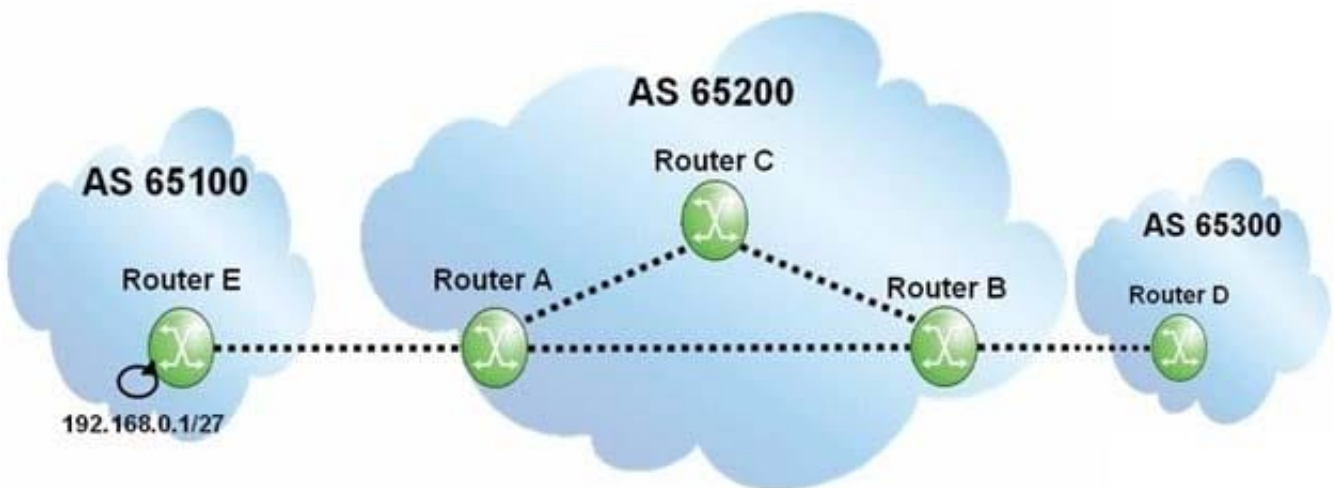
Which of the following regarding the withdrawal of routes from one BGP speaker to another is TRUE?

- A. An update message is used. Only a single prefix can be withdrawn at a time.
- B. An update message is used. Multiple prefixes can be withdrawn at a time.
- C. A withdraw message is used. Only a single prefix can be withdrawn at a time.
- D. A withdraw message is used. Multiple prefixes can be withdrawn at a time.

Correct Answer: B

QUESTION 13

Click the exhibit.



Assuming router A is configured with "next-hop-self", what does the BGP update for prefix 192.168.0.1/27 contain when it arrives at router B?

- A. AS Path of 65200 65100, Next Hop of router A.
- B. AS Path of 65200 65100, Next Hop of router E.
- C. AS Path of 65100, Next Hop of router A.
- D. AS Path of 65100, Next Hop of router E.

Correct Answer: C

QUESTION 14

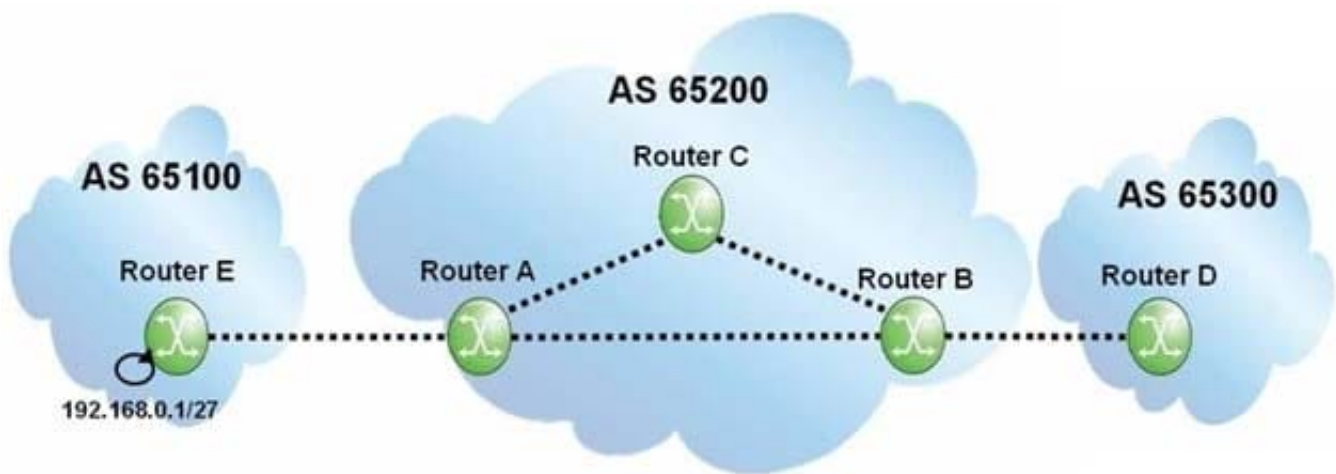
Which of the following statements regarding BGP shortcuts is FALSE?

- A. MPLS tunnels are used to carry transit traffic across the network.
- B. A full mesh of iBGP peering sessions is not required,
- C. Edge and transit routers need to be configured with BGP.
- D. The transit routers need to support LDP or RSVP-TE LSPs.

Correct Answer: C

QUESTION 15

Click the exhibit.



When router A receives the BGP update for the 192.168.0.1/27 prefix, it propagates it to routers B and C. What action is taken by router B when it receives the update?

- A. Router B propagates the BGP update to routers D and C.
- B. Router B propagates the BGP update to router D.
- C. Router B detects duplicates in its BGP database and discards the update.
- D. Router B propagates the update to routers A, C and D.

Correct Answer: B

[Latest 4A0-102 Dumps](#)

[4A0-102 VCE Dumps](#)

[4A0-102 Study Guide](#)