

# 352-011<sup>Q&As</sup>

Cisco Certified Design Expert Practical

## Pass Cisco 352-011 Exam with 100% Guarantee

Free Download Real Questions & Answers **PDF** and **VCE** file from:

<https://www.certbus.com/352-011.html>

100% Passing Guarantee  
100% Money Back Assurance

Following Questions and Answers are all new published by Cisco  
Official Exam Center

- ⚙️ **Instant Download** After Purchase
- ⚙️ **100% Money Back** Guarantee
- ⚙️ **365 Days** Free Update
- ⚙️ **800,000+** Satisfied Customers



#### QUESTION 1

Which option is a critical mechanism to optimize convergence speed when using MPLS FRR?

- A. IGP timers
- B. Bandwidth reservation
- C. Shared risk link groups
- D. Down detection

Correct Answer: D

---

#### QUESTION 2

Which solution suppresses the effect of excessive interface flapping events on routing protocols?

- A. IP Event Dampening
- B. SPF Backoff
- C. Carrier Delay
- D. BFD

Correct Answer: A

---

#### QUESTION 3

What are three common objectives of customers using multiple cloud providers? (Choose three )

- A. regional cloud provider access
- B. security
- C. analytics
- D. high availability
- E. feature disparity
- F. bandwidth

Correct Answer: ABD

---

#### QUESTION 4

Which two options are design considerations when introducing FCoE into an existing network? (Choose two)

- A. The FCoE QoS markings may overlap with call signaling QoS markings
- B. Optical cabling is needed to transmit FCoE traffic between a server and its directly connected Ethernet switch
- C. The existing network must support a MTU of 3280 bytes
- D. Twinaxial cabling can be used to transmit FCoE traffic between a server and its directly connected Ethernet switch, if it is less than 10 meters
- E. All the servers in the data center must be retrofitted with converged Network Adapters

Correct Answer: AE

---

#### QUESTION 5

How can a network designer reduce the amount of LSA flooding occurring in a large, single area fully-meshed OSPF topology?

- A. Implemented passive OSPF interfaces on the routers not participating on the DR/BDR election.
- B. Use access control lists to control outbound advertisements.
- C. Ensure DR and BDR routers are placed optimally in the topology.
- D. Place all point-to-point links in their own dedicated areas.

Correct Answer: C

---

#### QUESTION 6

An enterprise customer A with provider-independent address space is dual-homed to two ISP. Which two options , when combined, allow for customer A to efficiently achieve out- bond traffic load-balancing? ( Choose two)

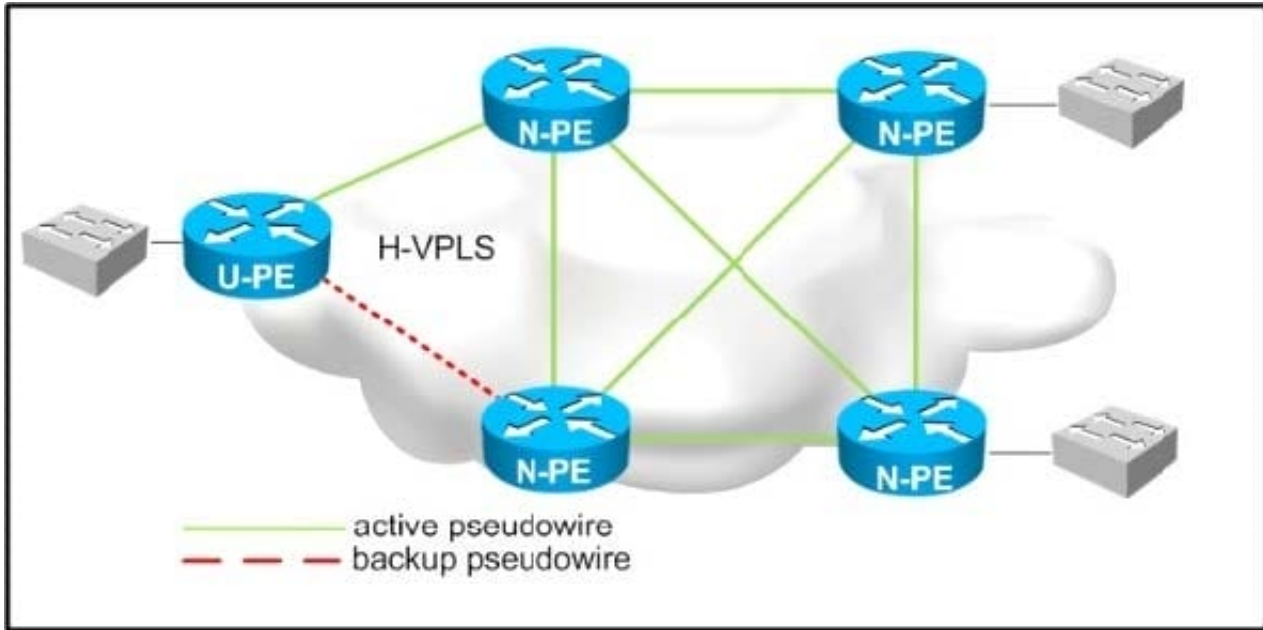
- A. Advertise Customer A subnets with a shorter AS path prepend to one of the ISPs than to the other
- B. Advertise Customer A subnets with different MED values to the two ISPs
- C. Accept a default route from both ISPs
- D. Make the CE connected to both ISPs route reflector
- E. Accept the routes originated on both ISPs and their direct peers

Correct Answer: CE

---

#### QUESTION 7

Refer to the exhibit,



Which two design considerations should be implemented on the pseudowire between N-PE and U-PE routers for a loop-free hierarchical VPLS service? (Choose two)

- A. Disable split horizon towards the U-PE router.
- B. Disable MAC learning on the U-PE router.
- C. Enable split horizon towards the N-PE routers.
- D. Disable MAC learning on the U-PE routers.
- E. Disable MAC learning on the U-PE routers.
- F. Enable split horizon towards the U-PE routers.
- G. Disable split horizon toward the N-PE routers.

Correct Answer: AC

### QUESTION 8

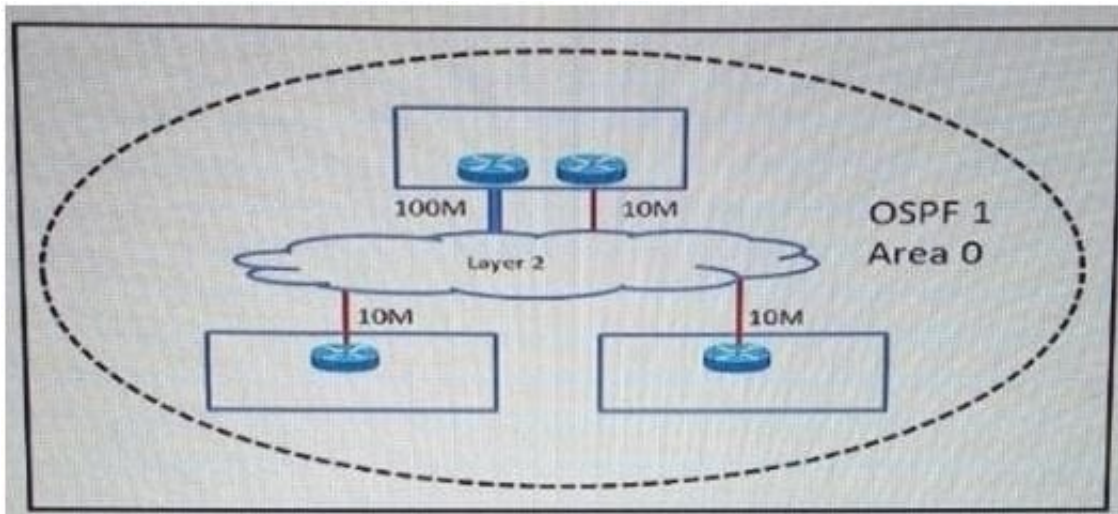
Which options do you investigate first when designing fast network convergence?

- A. Routing protocol database size
- B. MTU of the involved interfaces
- C. Link speed between sites
- D. Supported Layer 3 failure detection mechanism

Correct Answer: D

**QUESTION 9**

Refer to the exhibit.



An enterprise has three sites over a Layer 2 Metro Ethernet ELAN service. 100Mb/s and 10 Mb/s links have been provisioned to provide redundancy for the head office. When OSPF routing enabled to provide connectivity and the correct bandwidth statement has been applied to each interface, the branch sites observe two equal-cost routes to the head office. The enterprise wants to send all traffic through the 100 Mb/s link and use the 10Mb/S link strictly as a backup. Which OSPF network type must be set to ensure that the head office 100 Mb/s circuit is preferred over the 10 Mb/s circuit, at the same time minimize the amount of configuration required on all of the routers throughout the network?

- A. NBMA
- B. Point-to-multipoint
- C. Point-to-point
- D. Broadcast

Correct Answer: C

**QUESTION 10**

Which two statements about VXLAN are true? (Choose two)

- A. VXLAN is a Cisco proprietary solution
- B. VXLAN is an encapsulation method used to create a Layer 3 overlay network
- C. VXLAN can be used to enforce Layer 2 isolation in a multitenant infrastructure
- D. VXLAN uses the Spanning Tree protocol for loop prevention
- E. VXLAN overcomes the 802.1Q virtual LAN address space limitation

Correct Answer: BE

#### QUESTION 11

Which two OSPF network type combinations can you use in the design that requires spoke-to-spoke direct traffic? (Choose two.)

- A. hub as point-to-multipoint and spokes as non-broadcast
- B. hub as point-to-multipoint and spokes as point-to-point
- C. hub as broadcast and spokes as non-broadcast
- D. hub as point-to-point and spokes as point-to-point

Correct Answer: BC

---

#### QUESTION 12

You are reviewing a new data center design for a customer. They chose to leverage a tunnel-based overlay technology for quick deployment and multitenant security. Which design concern can affect the availability across the data center?

- A. Nonoverlapping IP address space between the overlay networks
- B. MTU size on the underlay links
- C. Review of common paths on the underlay links
- D. Paper placement of STP root bridge in overlay networks

Correct Answer: B

---

#### QUESTION 13

A network has several routers running IS-IS L1L2 mode on the same Ethernet segment. Which action reduces to a minimum the number of IS-IS adjacencies in this segment?

- A. Define only the router on the segment to be DIS
- B. Change all routers connected to this segment to a single-level area
- C. Make the interface priority on the backup DIS lower than the primary DIS
- D. Change half the routers to be L1-only and other half to be L2-only on this segment

Correct Answer: B

---

#### QUESTION 14

You are solving a design failure on a massive Hadoop cluster network that has an application with TCP incast behavior (also known as TCP Throughput collapse) affecting its many-to-one communications with packet loss at the last-hop

network device. Which metric must be measured to ensure that the network provides the best performance for this application?

- A. Availability
- B. Bandwidth utilization
- C. Jitter values
- D. Buffer utilization

Correct Answer: D

---

#### **QUESTION 15**

An network is designed to use OSPF to reach eBGP peers. Which condition should be avoided in the design to potentially prevent the eBGP peers do not flap continuously in case of link failure?

- A. Disable BGP synchronization.
- B. Advertise IP addresses used on eBGP peer statement via a non-backbone OSPF area.
- C. Advertise via eBGP IP addresses used on eBGP peer statements.
- D. Use an ACL to block BGP in one direction.

Correct Answer: C

[352-011 PDF Dumps](#)

[352-011 VCE Dumps](#)

[352-011 Exam Questions](#)