

# 300-820<sup>Q&As</sup>

Implementing Cisco Collaboration Cloud and Edge Solutions (CLCEI)

## Pass Cisco 300-820 Exam with 100% Guarantee

Free Download Real Questions & Answers **PDF** and **VCE** file from:

<https://www.certbus.com/300-820.html>

100% Passing Guarantee  
100% Money Back Assurance

Following Questions and Answers are all new published by Cisco  
Official Exam Center

- ⚙️ **Instant Download** After Purchase
- ⚙️ **100% Money Back** Guarantee
- ⚙️ **365 Days** Free Update
- ⚙️ **800,000+** Satisfied Customers



### QUESTION 1

Refer to the exhibit.

The screenshot shows the 'Edit Call Policy rule' configuration interface. The breadcrumb trail at the top right reads 'You are here: Configuration > Call Policy > Edit Call Policy rule'. The configuration fields are as follows:

Field	Value
Source type	From address
Rule applies to	Unauthenticated callers
Source pattern	*
Destination pattern	*vip@cisco.com
Action	Reject

Call policy rules on an Expressway-E prevent external callers from the internet from calling a VIP whose URI is vip@cisco.com. Which additional configuration setting is required for this call policy to function as intended?

- A. The default zone on the Expressway-E must not be configured to treat as authenticated.
- B. A search rule must be configured with an extract match for vip@cisco.com to pass the call to the Expressway-C.
- C. The Cisco TelePresence endpoint registered with the URI vip@cisco.com must be set in "do not disturb" mode.
- D. SIP TLS must be disabled on the Expressway-E.

Correct Answer: A

[https://www.cisco.com/c/en/us/td/docs/voice\\_ip\\_comm/expressway/admin\\_guide/X14-0-2/exwy\\_b\\_cisco-expressway-administrator-guide-x1402/exwy\\_m\\_device-authentication.html](https://www.cisco.com/c/en/us/td/docs/voice_ip_comm/expressway/admin_guide/X14-0-2/exwy_b_cisco-expressway-administrator-guide-x1402/exwy_m_device-authentication.html)

### QUESTION 2

Which type of interface is required when the Cisco Expressway-E is located in a DMZ between two separate firewalls on separate network segments?

- A. dual network interface
- B. application programming interface
- C. command line interface
- D. single network interface

Correct Answer: A

### QUESTION 3

When an Expressway-E is configured for static NAT, which Session Description Protocol attribute is modified to reflect the NAT address?

- A. SDP b-line
- B. SIP record route
- C. SDP c-line
- D. SDP m-line

Correct Answer: C

as c-line shows the connection information, Media IP address. So if it is natted it will be reflected there.

---

### QUESTION 4

Which mode should be used when Call Policy is configured on Expressways?

- A. extended CPL
- B. local CPL, policy service, and off
- C. on
- D. remote CPL

Correct Answer: B

---

### QUESTION 5

An administrator is deploying Cisco Expressways for Mobile and Remote Access. The registration domain is "example.com", and the Expressway-E FQDN is "expe.example.com". Cisco Jabber clients on the internet cannot discover services via DNS lookup. Which SRV records must be configured in the public DNS to allow Service Discovery?

- A. \_collab-edge.\_tls.example.com
- B. \_cisco-uds\_tcp.expe.example.com
- C. \_cisco-uds\_tcp.example.com
- D. \_collab-edge\_tls.expe.example.com

Correct Answer: A

---

### QUESTION 6

Which two licenses are required for the B2B feature to work? (Choose two.)

- A. Traversal Server
- B. TURN Relays
- C. Rich Media Sessions
- D. Advanced Networking
- E. Device Provisioning

Correct Answer: AC

### QUESTION 7

Refer to the exhibit.

The screenshot shows a DNS configuration interface with three main sections:

- DNS settings:**
  - System host name: VCS-E1
  - Domain name: ccnp.local
  - Search Domains: (empty)
  - DNS requests port range: Use the ephemeral port range
- Default DNS servers:**
  - Address 1: 10.10.10.10
  - Address 2: 10.40.40.40
- Per-domain DNS servers:**
  - Address 1: 10.20.20.20, Domain names: uclab.local
  - Address 2: 10.30.30.30, Domain names: ccnplab.local

When Expressway-E routes a call with URI 4040@uclab.local to a DNS zone, which DNS server does the Expressway query for the SIP SRV records?

- A. 10.20.20.20
- B. 10.10.10.10
- C. 10.40.40.40
- D. 10.30.30.30

Correct Answer: A

As well as the five default DNS servers, you can specify up to five additional explicit DNS servers for specified domains. This can be useful in deployments where specific domain hierarchies need to be routed to their explicit authorities.

**QUESTION 8**

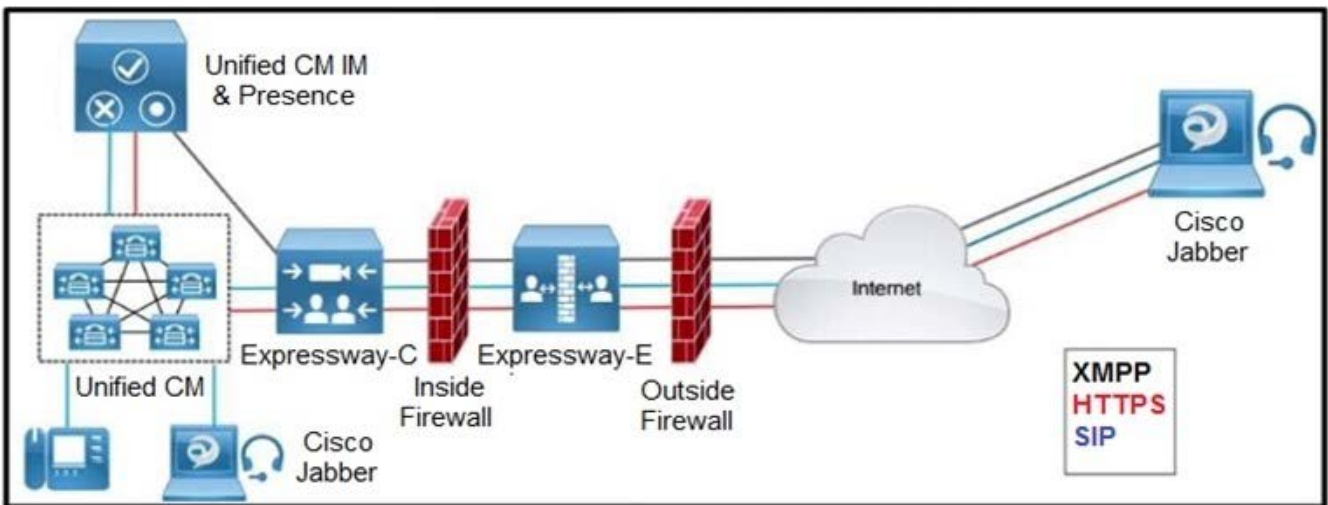
A video device registered with Cisco UCM failed to make an outbound B2B call. From Expressway-C diagnostic logs, an engineer found that the destination pattern is "john@example.com:5061", and the call was dropped with a 404 response code from Expressway-C. The search rule intended for this call-in Expressway-C is configured for Alias Pattern Match, Pattern type "Suffix," and Pattern "example.com". How must the configuration be changed to allow the call?

- A. Update the route pattern in Cisco UCM to send calls to "example.com" to the correct port.
- B. Create a transform on Expressway-C to strip port numbers.
- C. Create a call policy rule on Expressway-E to allow calls to port 5061.
- D. Update the call policy list in Expressway-C to allow calls to "example.com".

Correct Answer: B

**QUESTION 9**

Refer to the exhibit.



Which two outbound connections should an administrator configure on the internal firewall? (Choose two.)

- A. XMPP: TCP 7400
- B. SIP: TCP 7001
- C. SIP TCP 5061
- D. Media: UDP 36012 to 59999
- E. HTTPS: TCP 8443

Correct Answer: AB

The internal firewall must allow the following outbound connections from the Expressway-C to the Expressway-E: SIP: TCP 7001 Traversal media: UDP 2776 to 2777 (or 36000 to 36011 for large VM/appliance) XMPP: TCP 7400 HTTPS (tunneled over SSH between C and E): TCP 2222 Source: Official Cert Guide

Reference: [https://www.cisco.com/c/dam/en/us/td/docs/voice\\_ip\\_comm/expressway/config\\_guide/X12-5/Cisco-Expressway-IP-Port-Usage-for-Firewall-Traversal-Deployment-Guide-X12-5.pdf](https://www.cisco.com/c/dam/en/us/td/docs/voice_ip_comm/expressway/config_guide/X12-5/Cisco-Expressway-IP-Port-Usage-for-Firewall-Traversal-Deployment-Guide-X12-5.pdf)

---

#### QUESTION 10

Which statement about the Cisco Webex hybrid service is true?

- A. Expressway Connector is required for an on-premises Exchange server.
- B. Hybrid Message service works only with Jabber cloud deployment.
- C. Directory Connector is required for Azure AD.
- D. Directory Connector must be deployed for OBTP to work with on-premises video devices.

Correct Answer: A

---

#### QUESTION 11

Which protocol and port are used for signaling between on-premises Cisco Webex Video Mesh Nodes and Cloud Media Services?

- A. standard SIP over TCP port 5060
- B. signaling over HTTPS TCP port 443
- C. standard SIP TLS over TCP port 5061
- D. signaling over TCP port 444

Correct Answer: D

---

#### QUESTION 12

A Webex engineer is configuring SSO in Control Hub with Active Directory Federation Services. The engineer wants to authenticate users for all the applications that they are given rights to. The engineer also wants to eliminate further prompts when users switch applications during a particular session. Which action tells ADFS the fields to map to Webex to identify a user?

- A. Send LDAP attributes as claims.
- B. Create claim rules for Webex authentication
- C. Add a relying party trust to the ADFS.
- D. Map the E-mail-addresses LDAP attribute to the uid outgoing claim type.

Correct Answer: D

**QUESTION 13**

A MRA deployment is being configured where one of the requirements is for registered Jabber users to pull directory photos from an internal server. What should be configured on the Expressway-C so that MRA registered clients reach this server?

- A. A search rule must be created to route the requests to Cisco UCM.
- B. The directory photo server must be added to the HTTP allow list.
- C. A neighbor zone must be created to the directory photo server.
- D. The directory photo server FQDN must be added to the Expressway-C certificate.

Correct Answer: B

Reference: <https://www.cisco.com/c/en/us/support/docs/unified-communications/expressway/118798-technote-cucm-00.html#anc29>

**QUESTION 14**

Refer to the exhibit.

Name	Type	Data
_cisco-uds	Service Location(SRV)	[0][0][8443] cucm-pub.cll-collab.internal.
_gc	Service Location(SRV)	[0][100][3268] WIN-SERVER01.cll-collab.internal.
_h323cs	Service Location(SRV)	[0][0][1720] expc-pub.cll-collab.internal.
_kerberos	Service Location(SRV)	[0][100][8] WIN-SERVER01.cll-collab.internal.
_kpasswd	Service Location(SRV)	[0][100][464] WIN-SERVER01.cll-collab.internal.
_ldap	Service Location(SRV)	[0][100][389] WIN-SERVER01.cll-collab.internal.
_sip	Service Location(SRV)	[0][0][5060] expc-pub.cll-collab.internal.
_sips	Service Location(SRV)	[0][0][5061] expc-pub.cll-collab.internal.
_xmpp-client	Service Location(SRV)	[0][0][5222] cms.cll-collab.internal.

When a user tries to sign in to the Cisco Jabber client through Mobile and Remote Access, they receive this error message: "Cannot communicate with the server." The external DNS server is configured with the SRV records listed in the exhibit.

What is the cause of the issue?

- A. The \_sips DNS record must target expE-pub.cll-collab.internal and the \_cisco-uds DNS record must be removed.
- B. The collab-edge DNS record must be added to the DNS server and the \_cisco-uds DNS record must be removed.
- C. A Cisco CSF device must be configured in UC for the user and the \_cisco-uds DNS record must be removed.
- D. The HTTP allow list is not allowing communication with the Instant Message and Presence server.

Correct Answer: B

---

#### QUESTION 15

How are Cisco Webex Video Mesh deployments supported?

- A. Video Mesh Dual NIC are supported in demilitarized deployments.
- B. Mixed Single NIC and Dual NIC are supported in the same data center deployments.
- C. Clustering Video Mesh Nodes over the WAN are supported if Round Trip Time is low.
- D. IPv6 and IPv4 deployments are supported for Video Mesh clusters.

Correct Answer: A

[https://www.cisco.com/c/en/us/td/docs/voice\\_ip\\_comm/cloudCollaboration/wbxt/videomesh/cmgt\\_b\\_webex-video-mesh-deployment-guide/cmgt\\_b\\_hybrid-media-deployment-guide\\_chapter\\_011.html](https://www.cisco.com/c/en/us/td/docs/voice_ip_comm/cloudCollaboration/wbxt/videomesh/cmgt_b_webex-video-mesh-deployment-guide/cmgt_b_hybrid-media-deployment-guide_chapter_011.html)

[Latest 300-820 Dumps](#)

[300-820 Study Guide](#)

[300-820 Exam Questions](#)