

300-209^{Q&As}

Implementing Cisco Secure Mobility Solutions

Pass Cisco 300-209 Exam with 100% Guarantee

Free Download Real Questions & Answers **PDF** and **VCE** file from:

<https://www.certbus.com/300-209.html>

100% Passing Guarantee
100% Money Back Assurance

Following Questions and Answers are all new published by Cisco
Official Exam Center

- ⚙️ **Instant Download** After Purchase
- ⚙️ **100% Money Back** Guarantee
- ⚙️ **365 Days** Free Update
- ⚙️ **800,000+** Satisfied Customers



QUESTION 1

Which three parameters are specified in the isakmp (IKEv1) policy? (Choose three.)

- A. the hashing algorithm
- B. the authentication method
- C. the lifetime
- D. the session key
- E. the transform-set
- F. the peer

Correct Answer: ABC

QUESTION 2

Refer to the exhibit. The "level_2" digital certificate was installed on a laptop.



What can cause an "invalid not active" status message?

- A. On first use, a CA server-supplied passphrase is entered to validate the certificate.
- B. A "newly installed" digital certificate does not become active until it is validated by the peer device upon its first usage.
- C. The user has not clicked the Verify button within the Cisco VPN Client.
- D. The CA server and laptop PC clocks are out of sync.

Correct Answer: D

http://www.cisco.com/en/US/docs/security/asa/asa80/configuration/guide/cert_cfg.html Certificates have a date and time that they become valid and that they expire. When the security appliance enrolls with a CA and gets a certificate, the security appliance checks that the current time is within the valid range for the certificate. If it is outside that range, enrollment fails. Same would apply to communication between ASA and PC

QUESTION 3

What is a functional difference between IKEV1 and IKEV2 on a router?

- A. HSRP
- B. RRI
- C. DPD
- D. Stateful Failover

Correct Answer: C

Reference: https://www.cisco.com/en/US/docs/ios-xml/ios/sec_conn_ikevpn/configuration/15-1mt/Configuring_Internet_Key_Exchange_Version_2.html

QUESTION 4

Which Cisco adaptive security appliance command can be used to view the IPsec PSK of a tunnel group in cleartext?

- A. more system:running-config
- B. show running-config crypto
- C. show running-config tunnel-group
- D. show running-config tunnel-group-map
- E. clear config tunnel-group
- F. show ipsec policy

Correct Answer: A

QUESTION 5

You must implement DMVPN Phase 3 by using EIGRP as the dynamic routing protocol for the tunnel overlay. Which action do you take to allow EIGRP to advertise all routes between the hub and all the spokes?

- A. Summarize routes from the hub to the spokes.
- B. Disable split-horizon for EIGRP on the hub.
- C. Configure the hub to set itself as the next hop when advertising networks to the spoke.

D. Add a distribute list to permit the spoke subnets and deny all other networks.

Correct Answer: B

QUESTION 6

Which two parameters are specified in the isakmp (IKEv1) policy? (Choose two.)

- A. the peer
- B. the hashing algorithm
- C. the session key
- D. the authentication method
- E. the transform-set

Correct Answer: BD

QUESTION 7

Mobile work force clients are using Cisco AnyConnect for remote access to the corporate network. In an attempt to save bandwidth on the internet circuit, those working remotely are permitted to use their local connectivity for Internet use while still connected to the corporate network. Which feature allows distinct destinations to be encrypted on the remote client?

- A. DART
- B. Split Tunneling
- C. NAT Exempt
- D. Kerberos

Correct Answer: B

QUESTION 8

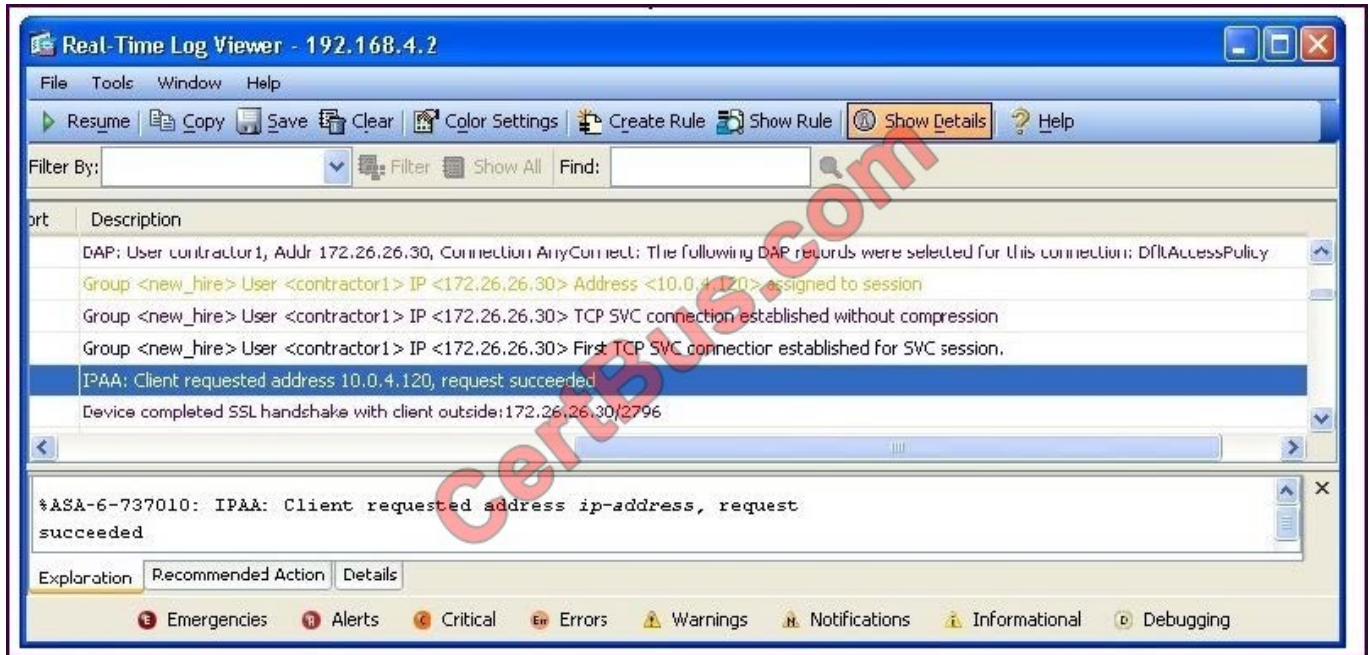
An engineer is assisting in the continued implementation of a VPN solution and discovers an NHRP server configuration. Which type of VPN solution has been implemented?

- A. DM VPN
- B. IPsec VPN
- C. SSL VPN
- D. GET VPN

Correct Answer: A

QUESTION 9

Refer to the exhibit. A new NOC engineer, while viewing a real-time log from an SSL VPN tunnel, has a question about a line in the log.



The IP address 172.26.26.30 is attached to which interface in the network?

- A. the Cisco ASA physical interface
- B. the physical interface of the end user
- C. the Cisco ASA SSL VPN tunnel interface
- D. the SSL VPN tunnel interface of the end user

Correct Answer: B

QUESTION 10

Which statement regarding GET VPN is true?

- A. When you implement GET VPN with VRFs, all VRFs must be defined in the GDOI group configuration on the key server.
- B. The pseudotime that is used for replay checking is synchronized via NTP.
- C. Group members must acknowledge all KEK and TEK rekeys, regardless of configuration.
- D. TEK rekeys can be load-balanced between two key servers operating in COOP.

E. The configuration that defines which traffic to encrypt is present only on the key server.

Correct Answer: E

QUESTION 11

Refer to the exhibit. A NOC engineer is in the process of entering information into the Create New VPN Connection Entry fields.



Which statement correctly describes how to do this?

- A. In the Connection Entry field, enter the name of the connection profile as it is specified on the Cisco ASA appliance.
- B. In the Host field, enter the IP address of the remote client device.
- C. In the Authentication tab, click the Group Authentication or Mutual Group Authentication radio button to enable symmetrical pre-shared key authentication.
- D. In the Name field, enter the name of the connection profile as it is specified on the Cisco ASA appliance.

Correct Answer: D

QUESTION 12

The Cisco AnyConnect client fails to connect via IKEv2 but works with SSL. The following error message is displayed:

"Login Denied, unauthorized connection mechanism, contact your administrator"

What is the most possible cause of this problem?

- A. DAP is terminating the connection because IKEv2 is the protocol that is being used.
- B. The client endpoint does not have the correct user profile to initiate an IKEv2 connection.
- C. The AAA server that is being used does not authorize IKEv2 as the connection mechanism.
- D. The administrator is restricting access to this specific user.
- E. The IKEv2 protocol is not enabled in the group policy of the VPN headend.

Correct Answer: E

[300-209 PDF Dumps](#)

[300-209 Study Guide](#)

[300-209 Braindumps](#)

To Read the [Whole Q&As](#), please purchase the [Complete Version](#) from [Our website](#).

Try our product !

100% Guaranteed Success

100% Money Back Guarantee

365 Days Free Update

Instant Download After Purchase

24x7 Customer Support

Average 99.9% Success Rate

More than 800,000 Satisfied Customers Worldwide

Multi-Platform capabilities - [Windows](#), [Mac](#), [Android](#), [iPhone](#), [iPod](#), [iPad](#), [Kindle](#)

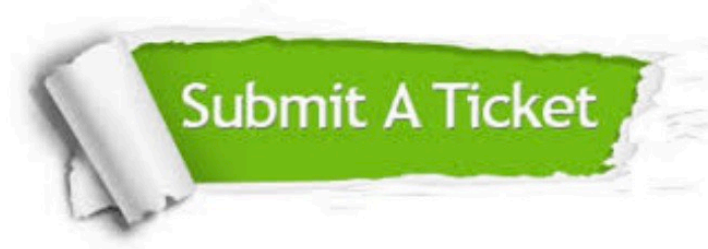
We provide exam PDF and VCE of Cisco, Microsoft, IBM, CompTIA, Oracle and other IT Certifications. You can view Vendor list of All Certification Exams offered:

<https://www.certbus.com/allproducts>

Need Help

Please provide as much detail as possible so we can best assist you.

To update a previously submitted ticket:



 <p>One Year Free Update Free update is available within One Year after your purchase. After One Year, you will get 50% discounts for updating. And we are proud to boast a 24/7 efficient Customer Support system via Email.</p>	 <p>Money Back Guarantee To ensure that you are spending on quality products, we provide 100% money back guarantee for 30 days from the date of purchase.</p>	 <p>Security & Privacy We respect customer privacy. We use McAfee's security service to provide you with utmost security for your personal information & peace of mind.</p>
---	---	--

Any charges made through this site will appear as Global Simulators Limited.

All trademarks are the property of their respective owners.

Copyright © certbus, All Rights Reserved.