

300-135^{Q&As}

Troubleshooting and Maintaining Cisco IP Networks

Pass Cisco 300-135 Exam with 100% Guarantee

Free Download Real Questions & Answers **PDF** and **VCE** file from:

<https://www.certbus.com/300-135.html>

100% Passing Guarantee
100% Money Back Assurance

Following Questions and Answers are all new published by Cisco
Official Exam Center

- ⚙️ **Instant Download** After Purchase
- ⚙️ **100% Money Back** Guarantee
- ⚙️ **365 Days** Free Update
- ⚙️ **800,000+** Satisfied Customers



QUESTION 1

Using the divide and conquer approach, drag the troubleshooting steps on the left onto the corresponding description on the right.

Select and Place:

C:\>ping[IP address]	identified host reachability status from the closest network device
R1#tracert[IP address]	identifies gateway reachability from an endpoint that is experiencing the issue
R1#ping[IP address]	uses path verification from the endpoint to the destination that is unreachable
C:\>tracert[IP address]	uses path verification from the network device where the endpoint is connected

Correct Answer:

	R1#ping[IP address]
	C:\>ping[IP address]
	C:\>tracert[IP address]
	R1#tracert[IP address]

QUESTION 2

Refer to the exhibit. How does the GRE keepalive configuration affect tunnel operation on these two routers?

```
R1:  
interface Tunnel0  
ip address 10.12.12.1 255.255.255.252  
keepalive 4 5  
tunnel source Loopback0  
tunnel destination 192.168.12.2
```

```
R2:  
interface Tunnel0  
ip address 10.12.12.1 255.255.255.252  
tunnel source Loopback0  
tunnel destination 192.168.12.1
```

- A. R1 will not send keepalives until keepalives are configured on R2
- B. R1 will detect tunnel failures within 5 seconds
- C. R1 will detect tunnel failures within 20 seconds
- D. R1 will send keepalives, but R2 will not return them

Correct Answer: C

QUESTION 3

Refer to the shown below.

%LINK-3-UPDOWN: Interface Serial0/0, changed state to up %LINEPROTO-5-UPDOWN: Line protocol on Interface Serial0/0, changed state to up

What statement is correct regarding the output shown in the graphic?

- A. These two log messages will not have a severity level. They are not errors but are just informational messages.
- B. The first log message is categorized as a warning message.
- C. These messages regarding interface status are normal output and will always be displayed when you exit config mode.
- D. The first log message is an error message with a severity level of 3.
- E. The second message would be shown if the logging console warning command had been issued.

Correct Answer: D

QUESTION 4

The implementations group has been using the test bed to do a 'proof-of-concept' that requires both Client 1 and Client 2 to access the WEB Server at 209.65.200.241.

After several changes to the network addressing, routing schemes, DHCP services, NTP services, layer 2 connectivity, FHRP services, and device security, a trouble ticket has been opened indicating that Client 1 cannot ping the

209.65.200.241 address.

Use the supported commands to isolated the cause of this fault and answer the following questions.

On which device is the fault condition located?

- A. R1
- B. R2
- C. R3
- D. R4
- E. DSW1
- F. DSW2
- G. ASW1

Correct Answer: A

On R1 we need to add the client IP address for reachability to server to the access list that is used to specify which hosts get NATed.

Clients 1 and 2 belong in the 10.2.0.0 subnet, as if you observe the NAT configuration you will notice that only 10.1.0.0 are specified in the NAT pool. Clients 1 and 2 are not being translated when they should be. The problem is with the NAT

configuration on R1.

QUESTION 5

Which two statements are true regarding login password encryption on Cisco devices? (Choose two.)

- A. enable password has a higher preference than enable secret
- B. enable secret has a higher preference than enable password
- C. enable password is easy to decipher
- D. enable password and enable secret cannot be configured together on one device
- E. enable secret is easy to decipher

Correct Answer: BC

QUESTION 6

A syslog message from a router with a GRE tunnel reads: "%TUN-5-RECURDOWN: Tunnel0 temporarily disabled due to recursive routing". Which scenario would cause this error?

- A. The remote router's tunnel interface is not participating in the routing process.
- B. The local tunnel mode does not match the tunnel mode configured on the remote router.
- C. The shutdown command has been issued on the source physical interface.
- D. The installed route to the tunnel destination has been learned via the tunnel interface.

Correct Answer: D

QUESTION 7

Which of the following would provide good baseline documentation to have on hand when analyzing potential problems? (Choose all that apply.)

- A. User authentication ID and password
- B. User profile
- C. Output of debug
- D. Output of show interface
- E. Result of ping
- F. Output of show process cpu

Correct Answer: CDEF

QUESTION 8

Which of the following options represents the correct sequence of DHCP messages after a client initially boots?

- A. DHCPREQUEST, DHCPPOFFER, DHCPDISCOVER, DHCPACK
- B. DHCPDISCOVER, DHCPPOFER, DHCPREQUEST, DHCPACK
- C. DHCPPOFFER, DHCPACK, DHCPREQUEST, DHCPDISCOVER
- D. DHCPDISCOVER, DHCPREQUEST, DHCPPOFFER, DHCPACK
- E. DHCPREQUE5T, DHCPDISCOVER, DHCPPOFFER, DHCPACK
- F. DHCPDISCOVER, DHCPACK, DHCPREQUEST, DHCPPOFFER

Correct Answer: B

QUESTION 9

Which three management categories are contained in the FCAPS network maintenance model? (Choose three.)

- A. Config
- B. Fault
- C. Storage
- D. Accounting
- E. Redundancy
- F. Telecommunications

Correct Answer: ABD

QUESTION 10

Which of the following commands can be used to gather information about the AS_PATH of a BGP route? (Choose all that apply.)

- A. show ip bgp neighbors
- B. debug ip bgp updates
- C. show ip route bgp
- D. show ip bgp
- E. show ip bgp summary
- F. sh ip bgp database

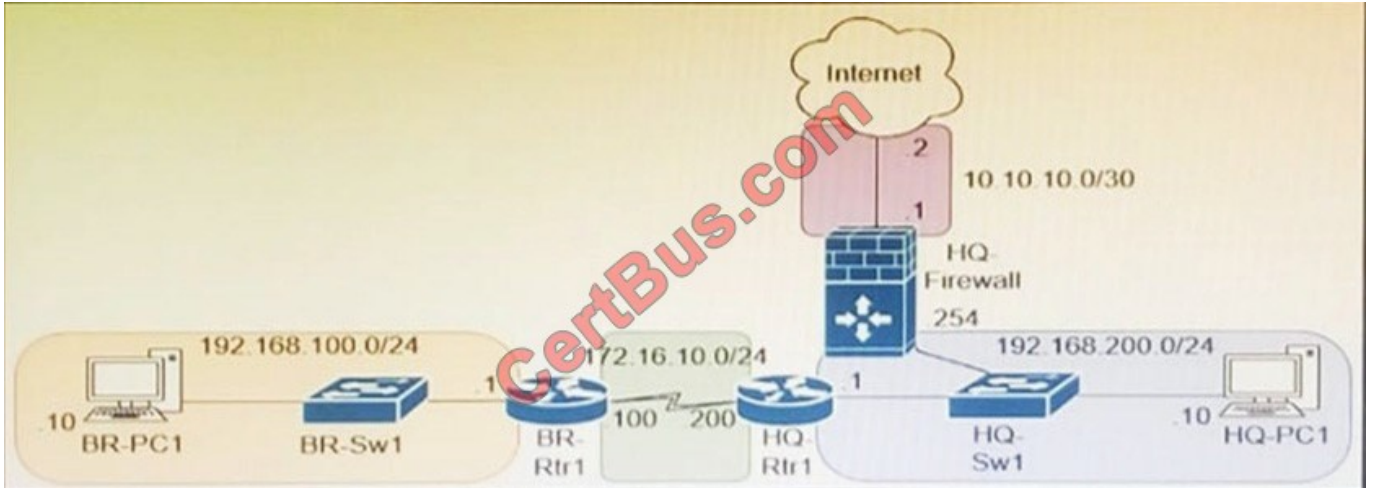
Correct Answer: BD

Incorrect:

show ip bgp summary: The command show ip bgp summary does not presents informations about routes

QUESTION 11

Refer to the exhibit. BR-PC1 (192.168.100.10) is unable to reach the Internet. Access to the Internet is routed through the HQ site and all NAT configurations have been applied and verified. The user on BR-PC1 has attempted to ping www.cisco.com and did not receive any responses. Which troubleshooting step will assist with root cause analysis by displaying a series of upstream connected devices?



- A. Check the physical link from HQ-Firewall to HQ-Sw1
- B. Run an nslookup to www.cisco.com
- C. Check HQ-Firewall to see if it's blocking HTTP traffic
- D. Run a traceroute to www.cisco.com

Correct Answer: D

QUESTION 12

DRAG DROP

You are configuring Management Plane Protection on R1, which connects to the 10.100.100.0/24 network using SSH. Drag and drop the required commands or command sequences from the left into the correct sequence on the right.

Select and Place:

access-list 125 deny tcp 10.100.100.0 0.0.0.255 any eq 23	
class-map match-all SSH match access-group 125	
policy-map MPP-INPUT class SSH	
class-map match-all SSH match access-group 125 match 200	
access-list 125 permit tcp 10.100.100.0 0.0.0.255 eq 22 any established access-list 125 permit tcp 10.100.100.0 0.0.0.255 any eq 22	
control-plane service-policy input MPP-INPUT	

Correct Answer:

<pre>access-list 125 deny tcp 10.100.100.0 0.0.0.255 any eq 23</pre>	<pre>access-list 125 permit tcp 10.100.100.0 0.0.0.255 eq 22 any established access-list 125 permit tcp 10.100.100.0 0.0.0.255 any eq 22</pre>
	<pre>class-map match-all SSH match access-group 125</pre>
	<pre>policy-map MPP-INPUT class SSH</pre>
<pre>class-map match-all SSH match access-group 125 match 200</pre>	<pre>control-plane service-policy input MPP-INPUT</pre>

[300-135 Practice Test](#)

[300-135 Study Guide](#)

[300-135 Braindumps](#)

To Read the [Whole Q&As](#), please purchase the [Complete Version](#) from [Our website](#).

Try our product !

100% Guaranteed Success

100% Money Back Guarantee

365 Days Free Update

Instant Download After Purchase

24x7 Customer Support

Average 99.9% Success Rate

More than 800,000 Satisfied Customers Worldwide

Multi-Platform capabilities - [Windows](#), [Mac](#), [Android](#), [iPhone](#), [iPod](#), [iPad](#), [Kindle](#)

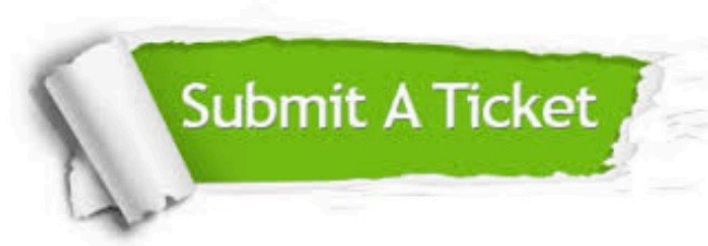
We provide exam PDF and VCE of Cisco, Microsoft, IBM, CompTIA, Oracle and other IT Certifications. You can view Vendor list of All Certification Exams offered:

<https://www.certbus.com/allproducts>

Need Help

Please provide as much detail as possible so we can best assist you.

To update a previously submitted ticket:



 <p>One Year Free Update Free update is available within One Year after your purchase. After One Year, you will get 50% discounts for updating. And we are proud to boast a 24/7 efficient Customer Support system via Email.</p>	 <p>Money Back Guarantee To ensure that you are spending on quality products, we provide 100% money back guarantee for 30 days from the date of purchase.</p>	 <p>Security & Privacy We respect customer privacy. We use McAfee's security service to provide you with utmost security for your personal information & peace of mind.</p>
---	---	--

Any charges made through this site will appear as Global Simulators Limited.

All trademarks are the property of their respective owners.

Copyright © certbus, All Rights Reserved.