

1Y0-A20^{Q&As}

Citrix XenApp 6.5 Administration

Pass Citrix 1Y0-A20 Exam with 100% Guarantee

Free Download Real Questions & Answers **PDF** and **VCE** file from:

<https://www.certbus.com/1y0-a20.html>

100% Passing Guarantee
100% Money Back Assurance

Following Questions and Answers are all new published by Citrix
Official Exam Center

- ⚙️ **Instant Download** After Purchase
- ⚙️ **100% Money Back** Guarantee
- ⚙️ **365 Days** Free Update
- ⚙️ **800,000+** Satisfied Customers



QUESTION 1

Scenario: An administrator is unable to start the IMA Service on a single XenApp server. The administrator suspects another administrator may have changed the contents of the file that holds the connectivity information for the server to the data store server.

Which file should the administrator check to verify the service connectivity information?

- A. .\Program Files\Citrix\Independent Management Architecture\MF20.dsn
- B. .\Program Files\Citrix\Independent Management Architecture\MF20.mdb
- C. .\Program Files (x86)\Citrix\Independent Management Architecture\MF20.dsn
- D. .\Program Files (x86)\Citrix\Independent Management Architecture\MF20.mdb

Correct Answer: C

QUESTION 2

Scenario: An administrator needs to prepare a group of XenApp 6.5 servers for a scheduled maintenance window. The servers need to accept connections from users that already have existing sessions but disallow any new connections. The administrator also needs to ensure that the servers remain in maintenance mode after the software updates are performed, which will require multiple restarts. Which setting can the administrator use from the AppCenter?

- A. Prohibit logons only
- B. Drain until next restart
- C. Allow logons and reconnections
- D. Prohibit logons until server restart
- E. Prohibit logons and reconnections

Correct Answer: A

QUESTION 3

Scenario: Employees at a company can access Microsoft Outlook 2010 and Adobe Reader offline. These employees complain that they CANNOT view PDF files when they receive emails containing attached PDF files.

Which action can the administrator take to solve this problem?

- A. Publish the two applications with the same settings from the AppCenter.
- B. Precache the two packages on the users\' computers instead of streaming them at launch time.
- C. Create a new streaming profile to publish that links the Office 2010 streaming package with the Adobe Reader streaming package.

D. When profiling, choose '\\Advanced Install - Select files and folders\\' and copy the application executables from the two applications into each application profile.

Correct Answer: C

QUESTION 4

Scenario: A user opens a session to Server A to use a word processing application at 18:00. After 45 minutes of working with the word processing application, the user then launches an email client application, which opens a new session on Server B. Upon review of the environment, the administrator confirms that both applications are published with the same parameters for audio, screen size, color resolution and encryption.

Which three possible reasons could have prevented Session Sharing from occurring? (Choose three.)

- A. The email client application is NOT installed on Server A.
- B. The email client application is only published from Server B.
- C. The number of instances of the email client application that can be run is limited.
- D. Server A is reporting a full load, preventing the email client application from launching.
- E. Server A and Server B are in different vLANs; the vLAN of Server B has more capacity than the vLAN of Server A.

Correct Answer: ABD

QUESTION 5

Scenario: A server farm has 12 servers in the FARM worker group with more than 1,000 users and 20 published applications. Two of the published applications perform excessive CPU context switches.

What can the administrator do to ensure that the resource-intensive applications will run optimally in the server farm?

- A. Assign a load evaluator to the FARM worker group.
- B. Assign a load evaluator to both resource-intensive applications.
- C. Apply the multi-Stream policy to both resource-intensive applications.
- D. Apply the session importance policy to both resource-intensive applications.

Correct Answer: B

QUESTION 6

Scenario: An administrator has published Microsoft Word on two identical servers in a server farm. There are 75 users in the environment, and each server must be allowed to accept all 75 user sessions for failover purposes. All users start work at 09:00 in the morning. The administrator wants to prevent server failure due to excessive connection attempts during this logon time.

Which option will meet the needs of this scenario?

- A. Load balancing policy
- B. Default load evaluator
- C. Server session policy
- D. Advanced load evaluator

Correct Answer: B

QUESTION 7

Scenario: An administrator manages a XenApp 6.5 farm with one zone. All servers in the zone have identical hardware and software. The zone is configured with a primary data collector with a preference of Most Preferred and a backup data collector with a preference of Preferred. All other XenApp servers in the zone have a preference of Not Preferred.

If both the primary and backup zone data collectors are turned off, the XenApp server in the zone that will be elected the new primary zone data collector is the one _____. (Choose the correct option to complete the sentence.)

- A. with the lowest Host ID number
- B. with the highest Host ID number
- C. that responds last to the election request
- D. that responds first to the election request

Correct Answer: B

QUESTION 8

Scenario: Users in an environment connect to the XenApp farm from Linux based thin clients. They report that they are NOT able to access the computer-based training course hosted on the XenApp server in the Microsoft Media Format (MMS). Windows-based users are NOT reporting this issue.

What could the administrator do to resolve this issue?

- A. Disable host (server) to client redirection.
- B. Require the Linux thin clients to use the Java client.
- C. Ensure these thin clients have the latest Receiver client for Linux.
- D. Create a XenApp policy to enable HDX Flash redirection for the Linux thin clients.

Correct Answer: A

QUESTION 9

Scenario: A XenApp administrator has been tasked with building XenApp servers as generically as possible. Other than the operating system, required updates, patches and anti-virus software, the servers are to be kept as identical as

possible to allow for quick disaster recovery should the need arise. Bandwidth is restricted and the client machines run operating systems other than Windows. Therefore, streaming applications to the client machines is NOT possible.

Which setting must the administrator select when publishing the application?

- A. Streamed to client
- B. Accessed from a server, streamed to server
- C. Accessed from a server, installed application
- D. Streamed if possible, otherwise accessed from a server

Correct Answer: B

QUESTION 10

An application is published to users using the '\\Streamed to client\\' delivery type.

Which two plug-ins are required and where are they required for this application? (Choose two.)

- A. Online plug-in on the client
- B. Offline plug-in on the client
- C. Offline plug-in on the XenApp server
- D. Online plug-in on the XenApp server

Correct Answer: AB

QUESTION 11

Scenario: An administrator needs to use the session printers policy to provision network printers from a 32bit print server to XenApp users. Native Windows drivers are NOT available to these printers.

Which step should the administrator take prior to implementing the session printers policy in this environment?

- A. Configure the printer driver mapping and compatibility policy.
- B. Enable the automatic installation of in-box printer drivers policy.
- C. Install the corresponding 32-bit printer driver on the XenApp servers.
- D. Install the corresponding 64-bit printer driver on the XenApp servers.

Correct Answer: D

QUESTION 12

Scenario: An administrator is notified that a single XenApp server has an issue with starting the IMA Service. A quick

check of all dependent services shows there are NO issues. When the administrator checks the MF20.dsn file using Notepad, the file is unreadable and contains miscellaneous characters.

In order to quickly resolve this issue, the administrator should copy the _____. (Choose the correct option to complete the sentence.)

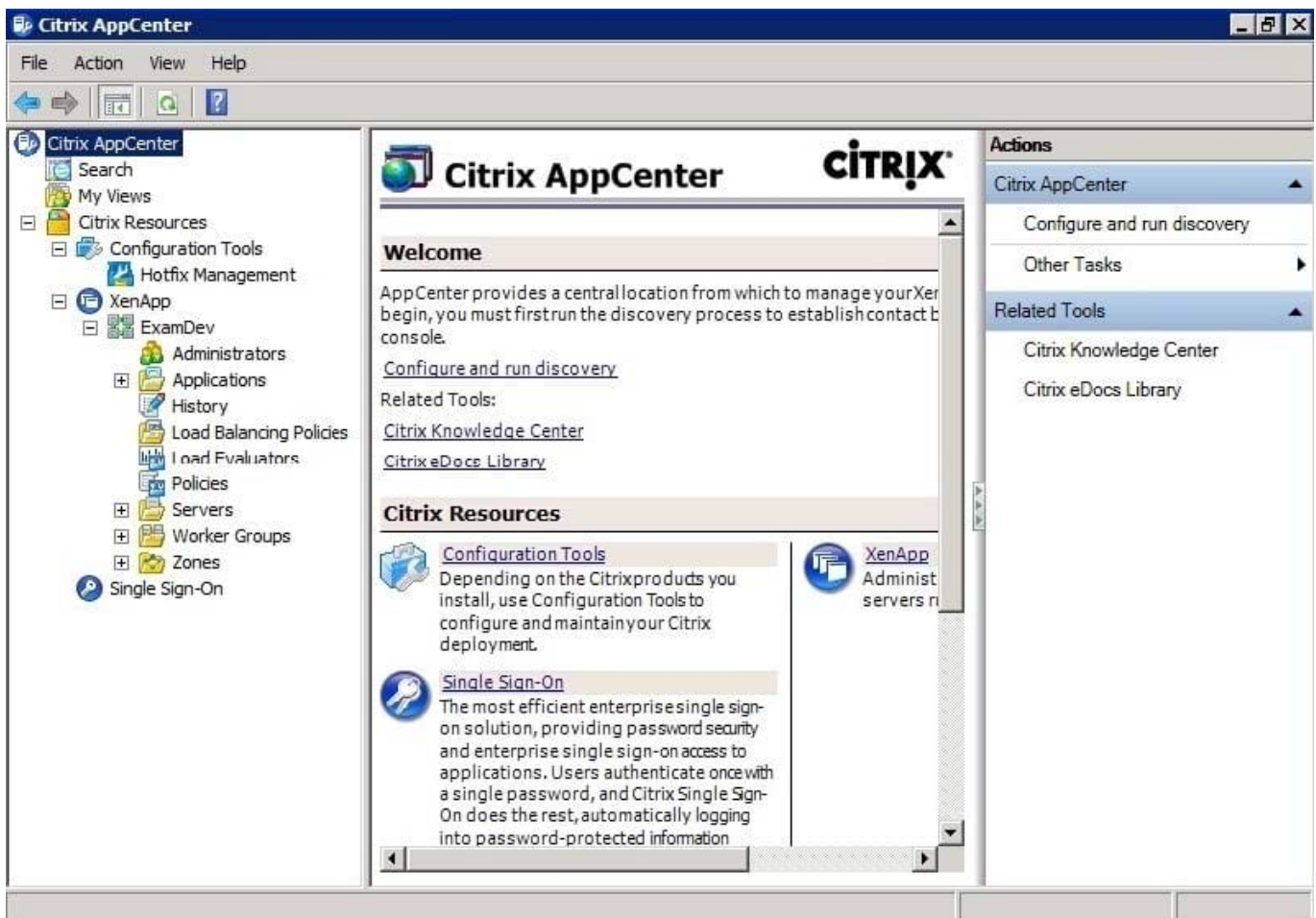
- A. contents only of a working server\\'s IMA folder
- B. folder and contents from a working server\\'s IMA folder
- C. MF20.dsn file from another server and reinstall XenApp 6.5
- D. MF20.dsn file from another server, renaming the hostname of the XenApp Server

Correct Answer: D

QUESTION 13

For change management reasons, a XenApp administrator has been tasked with reviewing log configuration changes made to the XenApp farm.

Click the '\\Exhibit\\' button to view a screenshot of the AppCenter.



Where would the administrator access this data?

- A. Farm node in the AppCenter choosing the History node
- B. Farm node in the AppCenter choosing the Information tab
- C. Server node in the AppCenter choosing the Information tab
- D. Event Viewer in the operating system under the System node

Correct Answer: A

QUESTION 14

When using the Gateway Direct secure access method in the Web Interface, the XenApp administrator must provide the _____ of the Access Gateway server. (Choose the correct option to complete the sentence.)

- A. IP address
- B. SSL certificate
- C. NetBIOS name
- D. Fully Qualified Domain Name (FQDN)

Correct Answer: D

QUESTION 15

Scenario: A company has 20 machines and 20 users. The 20 users are split into two shifts so that only 10 people are connected to the XenApp 6.5 farm at any one time. Now, a third shift of 10 new users is being added.

In order to ensure that the 10 new users can get connected to XenApp 6.5, the administrator must purchase and install 10 additional _____. (Choose the correct option to complete the sentence.)

- A. client machines
- B. XenApp 6.5 concurrent licenses
- C. Microsoft Remote Desktop Services user client access licenses
- D. Microsoft Remote Desktop Services machine client access licenses

Correct Answer: C

[1Y0-A20 Study Guide](#)

[1Y0-A20 Exam Questions](#)

[1Y0-A20 Braindumps](#)