

1Y0-201^{Q&As}

Managing Citrix XenDesktop 7.6 Solutions exam

Pass Citrix 1Y0-201 Exam with 100% Guarantee

Free Download Real Questions & Answers **PDF** and **VCE** file from:

<https://www.certbus.com/1y0-201.html>

100% Passing Guarantee
100% Money Back Assurance

Following Questions and Answers are all new published by Citrix
Official Exam Center

-  **Instant Download** After Purchase
-  **100% Money Back** Guarantee
-  **365 Days** Free Update
-  **800,000+** Satisfied Customers



QUESTION 1

Scenario: A Citrix Administrator uses Machine Creation Services to manage XenDesktop 7.6 in an organization. One Delivery Group currently deploys 100 pooled-random Desktop OS machines. The administrator increased the number of

Desktop OS machines in the machine catalog to 150. After increasing the number of machines, only 100 users are able to log in to the pooled-random Desktop OS machines.

Which additional step must the administrator take to ensure 150 users are able to log in simultaneously to 150 Desktop OS machines?

- A. Power on the newly added machines.
- B. Join the new machines to the domain.
- C. Add the new machines to the Delivery Group.
- D. Remove the new Desktop OS machines from maintenance mode.

Correct Answer: C

QUESTION 2

Scenario: Users complain that it is taking significantly longer to see their Desktop OS machines compared to yesterday. The Helpdesk team is able to see active connections while the users are waiting. What could a Citrix Administrator view to compare the Desktop OS machine launch times?

- A. AAA logs in NetScaler Gateway
- B. Event log on the Citrix StoreFront server
- C. Logon duration details from Citrix Director
- D. Configuration logging report on Citrix Studio

Correct Answer: C

QUESTION 3

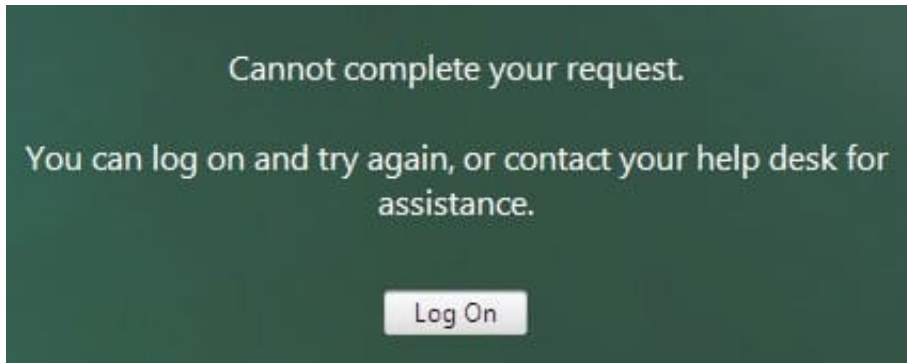
What is true about users\' access to Desktop OS machines when the XenDesktop SQL Server is offline?

- A. New users may start sessions.
- B. Only anonymous users may start new sessions.
- C. Users may only start a new session to Desktop OS machines.
- D. Users who have connected to their Desktop OS machine in the last 14 days are able to start sessions.

Correct Answer: D

QUESTION 4

Scenario: When accessing Citrix Receiver for Web on the StoreFront through NetScaler Gateway, a user receives an error. Click on the Exhibit button to view the error.



Users NOT connecting through NetScaler Gateway are successful. What is the likely cause of this error?

- A. The callback URL configured on StoreFront is incorrect.
- B. The NetScaler Gateway CANNOT resolve the StoreFront FQDN.
- C. The StoreFront server CANNOT resolve the Delivery Controller FQDN.
- D. The "\\User name and password\\" authentication method is NOT enabled on the StoreFront server.

Correct Answer: C

QUESTION 5

Scenario: Users complain that they are NOT able to print to the new special barcode printers attached to their client devices. However, they can print to other mapped printers. What should a Citrix Administrator do to resolve this issue?

- A. Configure the Printer Assignments policy setting.
- B. Set the Client printer redirection policy to Allowed.
- C. Configure Default Print Flags on the Desktop OS machines.
- D. Pre-stage manufacturer-provided printer drivers on the Desktop OS machines using pnputil.exe.

Correct Answer: D

QUESTION 6

Scenario: A Citrix Administrator uses Provisioning Services to deploy a Windows 7 image in Standard mode. After updating the hosting infrastructure to the latest version, the XenServer tools within the vDisk need to be updated. Which method could the administrator use to update the XenServer tools?

- A. Reverse the image and install tools.
- B. Clone the master target device and install tools.
- C. Place the vDisk in Private image mode and install tools.
- D. Enable maintenance mode on the Delivery Group and install tools.

Correct Answer: A

QUESTION 7

Scenario: A Citrix Administrator is unable to connect to the XenServer hosts through XenCenter. Server and Desktop OS machines hosted in the XenServer resource pool are functioning as expected. What is the likely cause of this issue?

- A. Pool master failure
- B. HA Heartbeat failure
- C. License Server failure
- D. Storage Area Network failure

Correct Answer: A

QUESTION 8

Users complain that all printers mapped from the Citrix Universal Print Server are in an offline state. What could be the likely cause of this issue?

- A. The Universal Print Server policy setting is set to '\\Disabled\\'.
- B. The Citrix Universal Print Service has stopped running on the Print Server.
- C. The Windows Print Spooler service has stopped running on the Server OS machines.
- D. The Universal Print Server policy setting is set to '\\Enabled with no fallback to Windows native remote printing\\'.

Correct Answer: B

QUESTION 9

Scenario: A Citrix Administrator configured Profile Management using Citrix policies. The administrator enabled the policies and set the order of priority. The administrator later discovered that when users log in, their profile settings are NOT

being saved for future sessions.

In which two ways could the administrator refresh policies on the Server and Desktop OS machines? (Choose two.)

- A. Restart all Server and Desktop OS machines.
- B. Run rsop.msc from the command-line interface.
- C. Disable the Windows Firewall on the Delivery Controller.
- D. Change priority of the Management Policy in Citrix Studio.
- E. Run gpupdate /force from the command-line interface on all Server and Desktop OS machines.

Correct Answer: CD

QUESTION 10

Scenario: A Citrix Administrator implemented pooled-random Desktop OS machines with Personal vDisk for the executive staff. The CIO is concerned about the retention of his vDisk. Which tool should the administrator use to implement vDisk retention?

- A. ctxpvd.exe
- B. PowerShell
- C. Citrix Studio
- D. Citrix Director

Correct Answer: B

QUESTION 11

Scenario: A Citrix Administrator recently created and deployed a new vDisk to all Desktop OS machines. The morning after making that change, users are unable to launch their Desktop OS machines. The administrator finds that the Desktop

OS machines associated with the new vDisk are shut down and in maintenance mode.

How could the administrator resolve this issue?

- A. Disable Maintenance mode on the device collection.
- B. Select '\\Enable Active Directory machine account password management\\' on the vDisk.
- C. Create Desktop OS machine Active Directory accounts manually and restart all the machines.
- D. Disable the machine account password changes policy through the GPO in the organizational unit where the target devices are located.

Correct Answer: B

QUESTION 12

Scenario: Users of the Human Resource (HR) user group report that one of their applications is NOT being personalized. A Citrix Administrator discovers that the application writes user-specific data in %programfiles%\HR\%username%. Which policy could the administrator configure to enable personalization of this application?

- A. Folders to mirror
- B. Path to user store
- C. Directories to synchronize
- D. Path to cross platform settings store

Correct Answer: C

QUESTION 13

Scenario: A Citrix Administrator who works for a hospital receives a request to set the display quality settings to the maximum possible quality for reviewing MRI scans. The hospital is using HDX 3D Pro within a XenDesktop 7.6 deployment. What should the administrator do to enhance the display quality as required in the scenario?

- A. Enable the Lossless policy
- B. Enable the HDX3DPro Quality Settings policy
- C. Apply the CLI command `xevgpu-create vm-uuid=`
- D. Create a new catalog for the HDX 3D Pro Desktop OS machines

Correct Answer: A

QUESTION 14

Which three options could a Citrix Administrator enable for users who connect to their provisioned desktop from Smart phones and tablets to improve their experience? (Choose three.)

- A. Legacy Graphics Mode
- B. Remote the combo box
- C. Automatic keyboard display
- D. Enhanced Desktop Experience
- E. Launch touch-optimized desktop

Correct Answer: BCE

QUESTION 15

Where in Citrix Director could a Citrix Administrator validate that Flash Redirection is enabled?

- A. User Details
- B. Activity Monitor
- C. The Network tab
- D. The Sessions tab

Correct Answer: A

[Latest 1Y0-201 Dumps](#)

[1Y0-201 VCE Dumps](#)

[1Y0-201 Study Guide](#)